



How to Differentiate between OEM and High Copy iPhone LCD Screens

INTRODUCTION

Use this guide as criteria to differentiate between OEM and High Copy (After Market) iPhone LCD screens during testing phase.

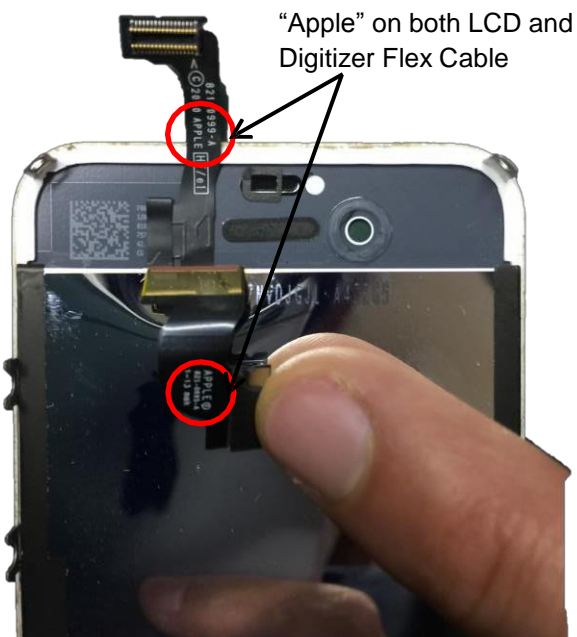
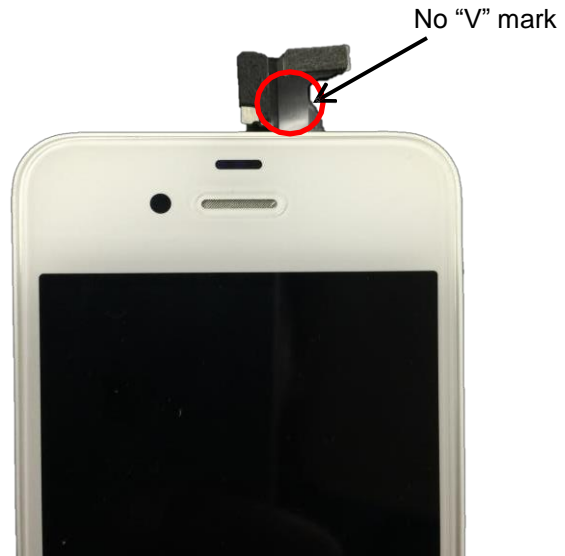
iPhone 4/4S

ORIGINAL



HIGH COPY





Original if all the following apply:

- Original screens have lens diffuser or sign of glue if the diffuser is no longer attached.
- Original screens never have any trade stickers or trade stamps.
- Original screens have "V" mark on front flex cable.
- "Apple" printed on the back of both LCD and Digitizer flex cable
- Always black or white. Never any other color.

High Copy if any of the following apply:

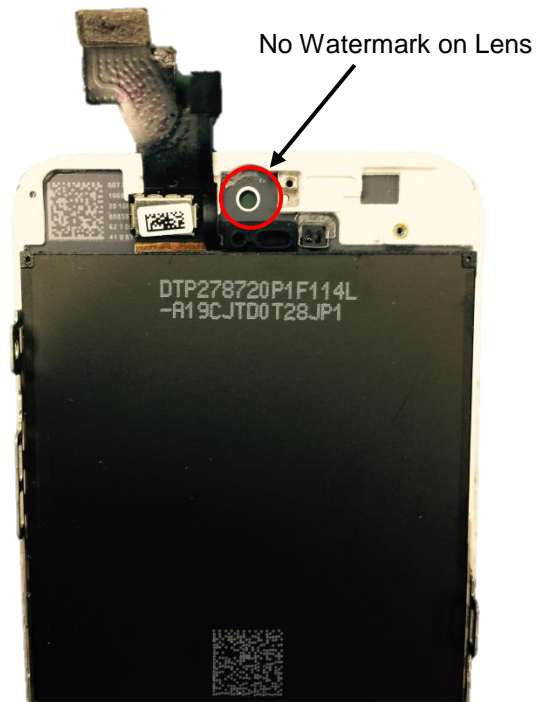
- High Copy screens usually have no lens diffuser
- High Copy screens have trade stickers or stamp.
- No "V" mark on front flex cable
- High Copy screen have no "Apple" printed on either LCD or Digitizer flex cable.
- High Copy screens can be any color. Color other than black or white is considered high copy.

iPhone 5/5C/5S

ORIGINAL

HIGH COPY





Original if all the following apply:

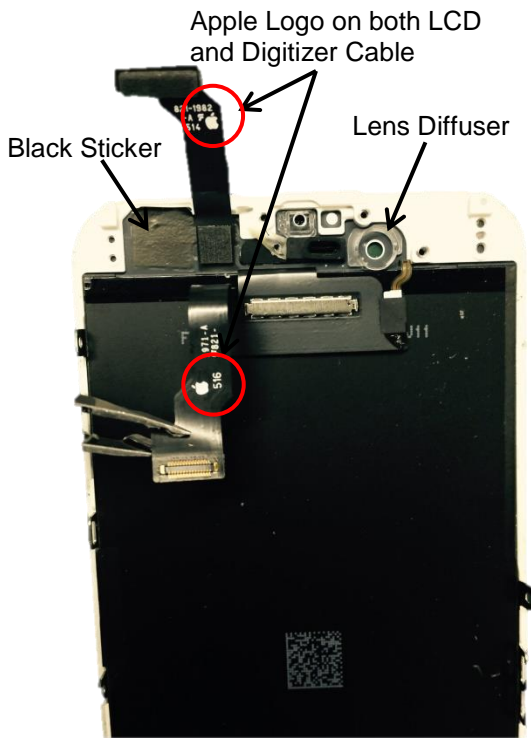
- Original screen has QR sticker on metal chip.
- Black sticker covering the top left corner.
- There is a watermark on lens. You need to tilt in light to see well.

High Copy if any of the follow applies:

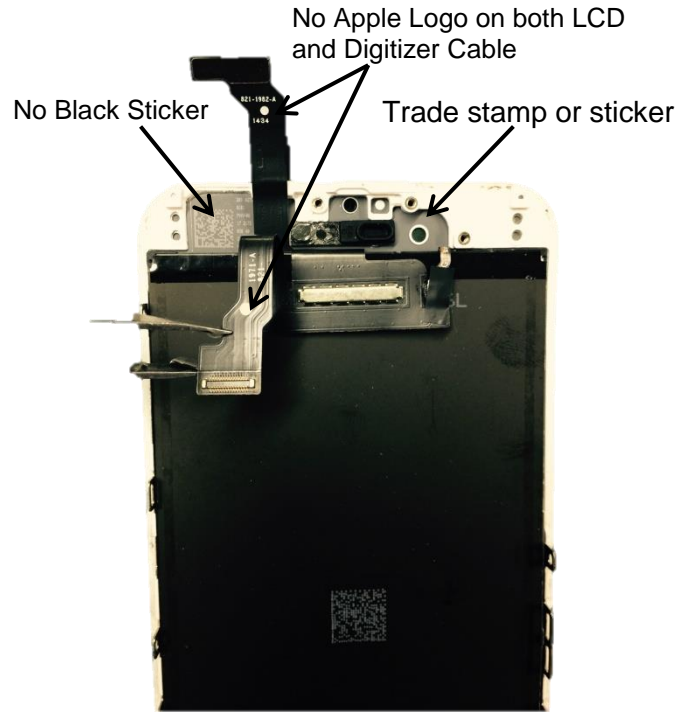
- No QR sticker covering the metal chip.
- The top left corner is not covered by a black sticker. Barcode exposed.
- If the metal chip has laser engraved barcode, it is considered high copy.
- Trade stamp or sticker
- No watermark on lens

iPhone 6

ORIGINAL



HIGH COPY



Original if all the following apply:

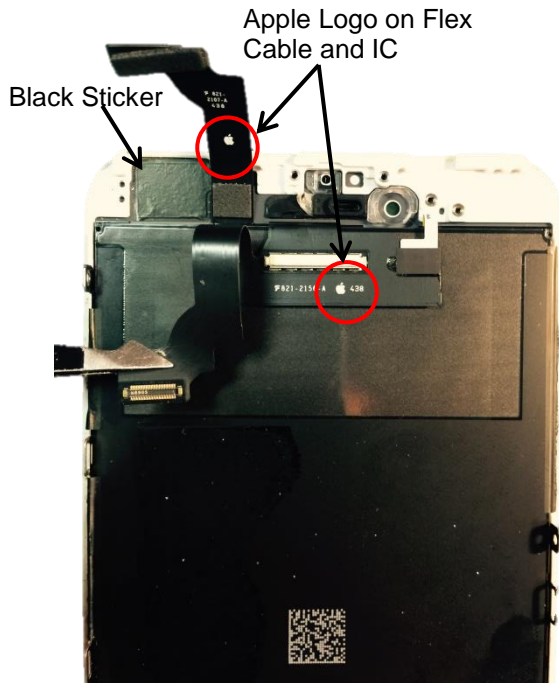
- Apple logo on both LCD and Digitizer cable.
- Lens diffuser or sign of glue if the diffuser is no longer attached.
- Black sticker covering the top left corner.
- There is a watermark around lens. You need to tilt in light to see well.

High copy if any of the following applies:

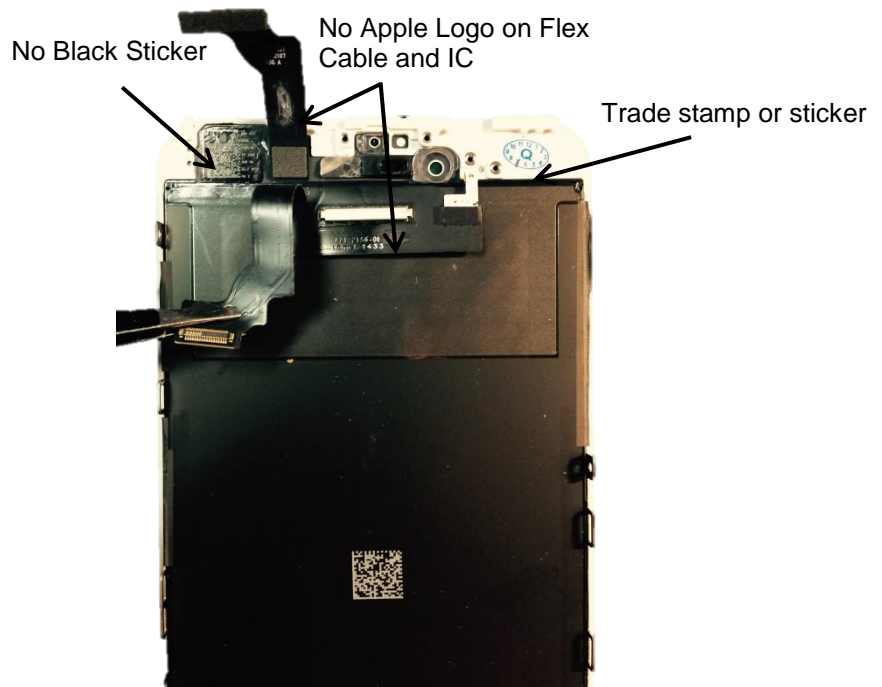
- No Apple logo on either LCD or Digitizer cable.
- No lens diffuser or sign of glue.
- The top left corner is not covered by a black sticker. Barcode exposed.
- No watermark around lens.
- Trade stamp or sticker.
- Black film barcode starting with C11

iPhone 6 Plus

Original



High Copy



Original if all the following apply:

- Apple logo on both LCD cable and IC chip.
- Lens diffuser or sign of glue if the diffuser is no longer attached.
- Black sticker covering the top left corner.
- There is a watermark around lens. You need to tilt in light to see well.

High copy if any of the following applies:

- No Apple logo on either LCD cable or IC chip.
- No lens diffuser or sign of glue.
- The top left corner is not covered by a black sticker. Barcode exposed.
- No watermark around lens.
- Trade stamp or sticker
- Black film barcode starting with C11

