



"The eighth wonder"



Lemala Ngorongoro is intimately set in a delightful ancient acacia forest close to the rim of the magnificent Ngorongoro Crater. Due to its location, a key advantage of staying at Lemala Ngorongoro is the quick and easy drive down on to the crater floor in the morning; Lemala guests usually have an hour's head start over others descending via the far busier Seneto crater access road on the western rim. Game drives from camp may start as early as 6.15am and guests can be down among Ngorongoro's abundant wildlife on the floor within 10-15 minutes - crucial for photographers who demand the best light conditions. Escorted walks are also available into the forest and along the crater rim with an armed ranger and Maasai guide.





Lemala Ngorongoro has 9 spacious tents that are positioned carefully to provide privacy and with minimal impact on the pristine forest environment.





Each room accommodates two queen-size beds, and as it can get cool on the Ngorongoro Crater rim at night, little luxuries like warm winter-weight duvets, hot water bottles and gas heaters ensure a cosy night's sleep. The roomy en-suite bathrooms contain a dressing area, flush toilet and a large safari-style shower.





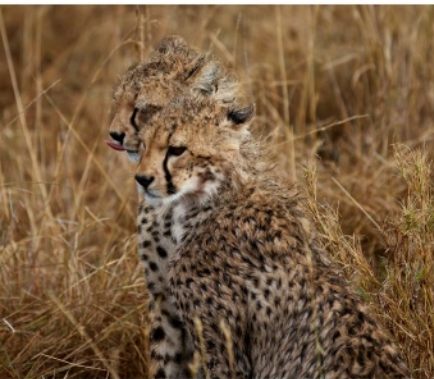
The mess tent is beautifully furnished with grand sofas, lamps, bookshelves and corner cabinets in old wood, chests and rugs. In the evening, guests can gather around the campfire to exchange tales of the day's safari followed by a sumptuous hearty meal.





Sundowners are more than just a happy hour, they are a very cherished African tradition and form an integral part of your safari experience. It is a time to relax, reminisce the day gone by, enjoy a cocktail or glass of wine around the campfire with fellow travellers who become friends as you review the events of the day. You can also enjoy a crater walk ending at a traditional Maasai Boma where you can learn about the proud and fascinating Maasai culture. A village chief will provide a tour of the Boma and explain their beliefs and way of life. You may watch or take part in a traditional dance if you so wish.





Is there a better place in Africa to view wildlife?

Rambling through the bush in an open-topped vehicle is the image that springs to mind most when people think about Africa. And there is no better place to go on safari than Tanzania. The sense of anticipation, as you set off at daybreak. Never knowing what lies around the next corner – or behind the next tree. Perhaps a lion in a tree, a leopard sloping off through the bush or a herd of elephants majestically crossing the plains... it's the thrill of the chase that keeps you going back for more.



LOCATION

We have carefully positioned our mobile camp to ensure a quick and direct access to the crater floor for the early morning game viewing

- 63Km from Manyara airstrip
- Lemala Ngorongoro open year round

GPS Co-ordinates :

3° 7'45.20"S 35°40'10.70"E
or -3.129222° 35.669639°

Altitude: 7611 feet above sea level

Temperature range:

Low 6°C / 44°F

High 25°C / 76°F

Drive time from Manyara airstrip: 1 hr 45 mins

DINING EXPERIENCES

- Game package and full-board available
- Camp-fire sundowners
- Picnic style bush breakfast and lunches
- House drinks including beers, wines, spirits, soft drinks, water and juices included
- Premium drinks available (additional cost)
- Dietary requirements can be accommodated if notified in advance

PUBLIC & GUEST AREAS

- Spacious lounge and dining area offering an array of seating options and amenities along with a well stocked bar

ACCOMMODATION

- 9 tented suites in Queen Configuration
- queen size mattress beds
- en suite hot showers and flush toilet with sink
- Writing desk
- safari chairs (on veranda)
- enclosed netted tents including canvas waterproof flysheet and inside.

SERVICES

- Complimentary Laundry Service
- In-room Flush Toilet & Shower
- Vanity Wash Basin and Stand
- Solar Hot Water
- Central Charging Bay with Universal Adapter in main lounge area
- Communal Dining
- Free WiFi available in Public areas

'ECO'logical

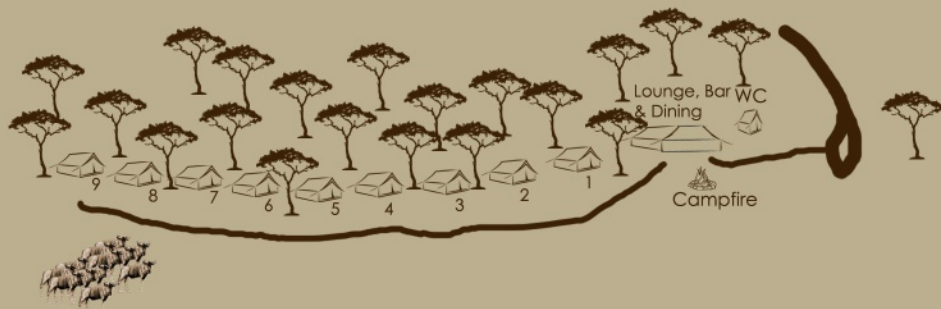
- All power provided by a combination of Solar and an Inverter system
- locally produced products for creating delicious menus
- Minimal environmental footprint
- No plastic water bottles on site

LEMALA CUBS: An interactive set of activities for children aged up to 11 years old



LEMALA

NGORONGORO



GPS Co-ordinates :
3° 7'45.20"S' 35°40'10.70"E
or -3.129222° 35.669639°

Altitude: 7611 feet above sea level

Note: map not to scale

The above site map gives one an idea of the general layout of the camp however be rest assured that each room affords equally spectacular views of the Serengeti Plains as one enjoys freshly brewed coffee, tea and hot chocolate delivered to your verandah as the sun rises, or a gin and tonic as the sun sets!



Ngorongoro Crater

Lemala Ngorongoro
Open Year Round



© Lemala Camps and Lodges



Discover the real Tanzania!

Ask a first-time traveller to Africa what they are looking forward to seeing most and they will probably reply, "the wildlife". Ask them, on their return home, what the best bit of their trip was and they will more-than-likely say, "the people". Tanzanians are among the most welcoming and approachable people on earth. With a wide variety of fascinating cultures to discover, and along with the phenomenal wildlife, it is likely to be one of the most rewarding experiences of your life.



"Travel is more than the seeing of sights; it is a change that goes on, deep and permanent, in the ideas of living"
- Miriam Beard

