

- 1 Lorna Bailey tea pot, signed to the base, 19cm high.
Est.£50-£80



- 2 Lorna Bailey: two shakers, 'The Beeches' and 'Stoke on Trent', both signed to the bases and stamped Old Ellgreave Pottery Lorna Bailey Range, Burslem, 14cm high.
Est.£30-£50



- 3 Lorna Bailey: two shakers, one signed and numbered 3/6 in blue, the other 53/250 in black, 14 cm high.
Est.£40-£60



- 4 Lionel Bailey, The Horizon, Lorna Bailey Studio Designs, Burslem, 4/30, 12½cm.
Est.£30-£50



- 5 Lorna Bailey: two shakers, one numbered 5/8, and both signed in black to the bases, 14cm high.
Est.£30-£50



- 6 Lorna Bailey, charger, Lorna Bailey Studio Designs 2002, signed in brown and red to the base and numbered 2/3, 35cm wide.
Est.£70-£100



- 7 Lorna Bailey: two shakers: 'Oaklands' and 'Highfield', both signed in black to the bases, 14cm high.
Est.£30-£50



- 8 Lorna Bailey vase, signed to the base, 23cm high.
Est.£30-£50



- 9 Lorna Bailey two handled jug, Burslem Old Ellgreave Pottery, based on the designs of Charles Rene Mackintosh, 23cm high,
Est.£40-£60



- 10 Lorna Bailey: two shakers; one 43rd Collectors Club Piece 'Finale', both signed in red Lorna Bailey, 14cm high.
Est.£30-£50



- 11 Lorna Bailey, The First Millennium, by Lorna Bailey, edited by Dave Lee, 2001.
Est.£20-£40



- 12 Wedgwood Conical Cream Blue 'W' based upon an original design in the Bizarre pattern by Clarice Cliff, together with the original box, Certificate of Authenticity and leaflet.
Est.£40-£60



- 13 A green glass dish, initialled LH 1316/75 to the base, 8cm high, together with a wooden studio bowl, hand turned, 13cm diameter.
Est.£20-£40



- 14 A Wedgwood smokey glass vase and a glass bowl signed Holmegaard, 1954
Est.£40-£60



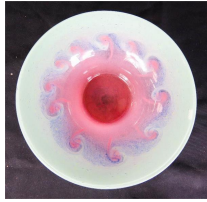
- 15 A Japanese glass vase, blue with iridescent finish.
Est.£40-£60



- 16 Kevin Wallhead, glass sculpture, 'Life's and Open Book', 12½cm high, 11cm wide.
Est.£60-£90



- 17 A 1940s Vasart bowl in pink, blue and green, 28cm diameter.
Est.£30-£50



- 24 Two glass vases; one coloured Mdina glass.
Est.£20-£40



- 17A A Whitefriars glass vase.
Est.£40-£60



- 25 A 1960s Art Glass bowl, with orange and aventurine swirl decoration, together with a Murano glass paperweight with two swans.
Est.£20-£30



- 18 A 1950s Murano Mezza Fiigrana squat vase with rainbow swirl.
Est.£20-£40



- 26 A Murano glass paperweight with green flower and two bees.
Est.£50-£80



- 19 A 1950s Murano Uranium Flavio Poli Seguo Art Vase in red and blue twist, 22cm high.
Est.£50-£80



- 27 A modern glass Picasso style head, signed by the artist.
Est.£200-£400



- 20 A modern glass table sculpture.
Est.£20-£40



- 28 A glass milliners head, 29cm high.
Est.£20-£40



- 21 An Isle Of Wight glass bud vase, 6cm high.
Est.£10-£20



- 29 A Holmegaard smoky glass vase, etched to the base, 16cm high.
Est.£30-£50



- 22 A modern glass bowl, with rippled iridescent effect.
Est.£30-£50



- 30 Two Murano Glass fishes and a vase.
Est.£20-£40



- 23 A glass modern table sculpture.
Est.£20-£40



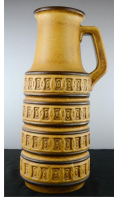
- 31 A Ridgway potteries Ltd 'Home Maker' pattern, cup and saucer and two plates.
Est.£10-£20



- 32 A Dartington Glass bud vase, 17cm high.
Est.£40-£60



- 33 A large West German pottery jug, no. 429-45, 45cm high.
Est.£20-£40



- 34 A Carlton ware orange salt and pepper, 12cm high.
Est.£10-£20



- 35 A pair of mid 20th century smokey blue glass candlesticks, 12cm high.
Est.£20-£40



- 36 A pair of orange Carltonware candlesticks, 11½cm high.
Est.£20-£40



- 37 A vaseline glass bowl, smokey swirl pattern, 23cm diameter.
Est.£20-£30



- 38 A pair of Mid 20th century design hardwood candlesticks.
Est.£30-£50



- 39 An Art Deco Wade Heath Flaxman jug.
Est.£20-£30



- 40 A Victorian glass table top eperne / spill holder.
Est.£10-£20



- 41 A Whitefriars style blue vase.
Est.£20-£40



- 42 DESIGN SALE - A group of 1970s Murano glass animal figurines, including Dolphin, Daschund, Octopus, Poodle and others.
Est.£40-£60



- 43 A glass vase in a mottled design, 28½cm high.
Est.£20-£40



- 44 A Basil Brush pottery money box, 1972, Ivon Owen and Peter Firmin embossed to base, 21cm high.
Est.£20-£40



- 45 A Carlton ware coffee pot and two cups in ochre.
Est.£10-£20



- 46 DESIGN SALE - A group of kitch blue glass ware, including fish, cornucopia and hankerchief vase.
Est.£20-£40



- 47 A pair of modelled head sections, painted gold.
Est.£40-£60



- 48 A chrome candlestand, glass bobble vase, Somerset dish.
Est.£10-£20



- 56 A quantity of Mellaware, in orange, light green, light blue and yellow.
Est.£20-£40



- 49 A group of bakelite vintage items including mirror, box, stand, and circular frame.
Est.£20-£30



- 57 A yellow Melaware set, designed by AH Woodfull; Chief designer at the production company British Industrial Plastics from 1934-75, 88 pieces in total.
Est.£60-£90



- 50 An Art Deco style figure of a woman.
Est.£10-£20



- 58 DESIGN SALE - A group of kitch orange coloured glassware including a hankiechief vase, two dishes and a red and orange glass Murano dish.
Est.£20-£40



- 51 A retro bakelite lamp in the form of a lotus flower, and a baby blue bakelite lamp base.
Est.£10-£20



- 59 A group of retro lamp shades.
Est.£10-£20



- 52 A plaster cast female profile portrait, painted with detail.
Est.£10-£20



- 60 A red and yellow spherical table lamp.
Est.£10-£20



- 53 A ceramic studio pottery plate, African lady, green ground.
Est.£20-£40



- 61 A wall plaque in the form of a dog, a 1930s lamp and a jug depicting a boat etc.
Est.£10-£20



- 54 A group of glass paperweights and blue Murano glass ashtray.
Est.£20-£30



- 62 A quantity of Poole pottery, including two toast racks, coffee pot, four cups and saucers, sugar bowl, water jug and tea pot.
Est.£20-£40



- 55 A pale green glass dessert set, one large bowl and six smaller dishes.
Est.£30-£50



- 63 A blue glass vase and matching dish, with purple swirl.



- 64 A bronze model of a hat and a similar steel hat, two glass candlesticks, kitch vases in red, blue and a green and dark bud vase.
Est.£20-£40



- 65 Barbara Furstenhofer: three Poole pottery plates; 434 Scene IV, 421 Spring 1, 421 Spring, and a large plate bu Barbara Furstenhofer.
Est.£20-£40



- 66 A group of kitch pottery, including Poole plate and ashtray, Carlton Ware salt and pepper etc.
Est.£10-£20



- 67 A Sally Lewis Braybrooke pottery vase, signed to the base.
Est.£10-£20



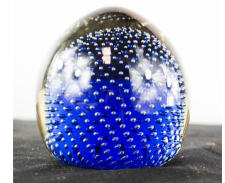
- 68 A teak 1960s table lamp and shade.
Est.£10-£20



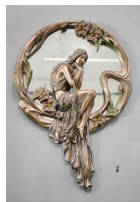
- 69 A group of kitch ornaments, including black ceramic cat, boxer puppy, faux tortoiseshell dressing set etc.
Est.£20-£30



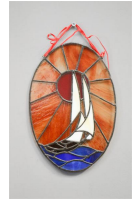
- 70 A glass paperweight.
Est.£10-£20



- 71 An Art Nouveau style wall mirror.
Est.£30-£40



- 72 A stained glass oval panel depicting a boat.
Est.£10-£20



- 73 Charles Rene Mackintosh style mirrors.
Est.£20-£30



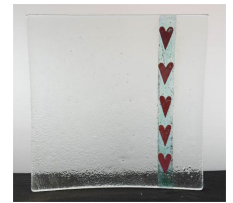
- 74 A studio art glass wall hanging.
Est.£30-£50



- 75 A studio art glass wall hanging.
Est.£20-£40



- 76 A glass dish, with heart decoration.
Est.£10-£20



- 77 A smokey glass vase, orange 'bubble' vase, a cranberry vase and similar bowl,
Est.£20-£40



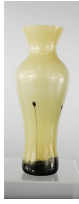
- 78 A Valetta glass dish, together with two retro wooden book ends.
Est.£10-£20



- 79 A Royal Haeger USA vase, 26cm high.
Est.£20-£30



- 80 A Caithness vase, green with black decoration, 25cm high.
Est.£30-£50



- 88 A wooden model house, Prague, and a white modern dish.
Est.£10-£20



- 81 A tall white glass vase with central black decoration, 39cm high.
Est.£20-£40



- 89 An Arts & Crafts Christening chalice, 13cm high.
Est.£10-£20



- 82 A plate with rim inwardly turned, 39cm diameter.
Est.£20-£40



- 90 An Arts & Crafts planter in copper, H: IV, raised on three feet.
Est.£20-£30



- 83 Three designer opaque red glass shades, with spiral line decoration.
Est.£40-£60



- 91 A copper jug, with monogram and no.3 to the base, 29cm high.
Est.£20-£30



- 84 Three designer opaque glass shades, with spiral line decoration.
Est.£40-£60



- 92 An Art Nouveau pewter vase, tapered form, embossed with birds, 30cm high.
Est.£50-£80



- 85 A set of eight Art Deco glass shades.
Est.£20-£30



- 93 A Holkham coffee set in the owl design.
Est.£40-£60



- 86 A Studio pottery stone glazed jug with incised mark to base.



- 94 Alex Francon-Smith studio pottery.
Est.£40-£60



- 87 A 1930s blue glazed studio vase with incised mark to base, 20 high, 14 wide.



- 95 A group of Portmerion, including a coffee pot, and six cups of varying design, all boxed.
Est.£30-£50



- 96 Two retro perspex paperweights.
Est.£10-£20



- 97 An opaque glass vase and matching bowl, together with Studio Line paperweight and plate, in Andy Warhol pattern.
Est.£10-£20



- 98 An Art Deco salad bowl and servers.
Est.£20-£30



- 99 A set of six Italian Richard Ginon Murano black glass under plates.
Est.£50-£80



- 100 A large 1950s Murano vase with unusual air twist border decoration, 31cm high.
Est.£50-£80



- 101 Gil Berre, 1972, an abstract glass panel, no 113, signed and dated, 63cm by 27cm.
Est.£100-£200



- 102 An Art Deco decanter set.
Est.£50-£80



- 103 Katherin Kelm, Norwegian bowl and tea pot.
Est.£80-£120



- 104 A group of 1960s glassware by Per Lin, Holmegaard 'Canada'.
Est.£80-£120



- 105 A pair of grey glass decanters.
Est.£30-£50



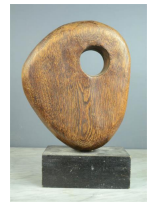
- 106 Taslim Martin: Portrait Head I (2005), Terrazzo glass.
Est.£70-£100



- 107 A modern ceramic sculpture, woman & child, 42 by 23cm.
Est.£40-£60



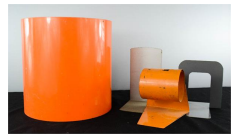
- 108 A contemporary sculpture, in the style of Barbara Hepworth.
Est.£20-£40



- 109 A group of black and white male mannequins.
Est.£40-£60



- 110 An orange plastic mid 20th century design bin together with three metal stands.
Est.£20-£30



- 110A A pair of yellow velvet retro boulder cushions.
Est.£10-£20



- 111 A French Art Nouveau lamp base, cast iron painted red in the form of a Harlequin Jester.
Est.£10-£20



- 112 A Vintage Guinness Time ceramic clock.
Est.£20-£40



- 113 A black bakelite phone.
Est.£30-£50



- 114 A black bakelite phone.
Est.£30-£50



- 115 A vintage lamp base in the form of a harlequin holding an orb.
Est.£20-£40



- 116 Alex Francon-Smith studio pottery lamp base and vase.
Est.£20-£40



- 117 A Nocturne Lamp by Professor Gerald Benney circa 1950's, manufactured by Scottish Precision Castings Ltd. the base and shade moves on a chrome pivot and cast in aluminium.
Est.£70-£100



- 118 A black angle poise lamp.
Est.£40-£60



- 119 A Black-Blum table candleabra, 10cm high, 19cm wide.
Est.£20-£40



- 120 A pair of WMF candlesticks, Art Nouveau design, numbered 325 to the bases.
Est.£250-£350



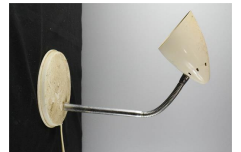
- 121 An olive green anglepoise lamp.
Est.£40-£60



- 122 A pair of green angle poise bench lamps.
Est.£60-£90



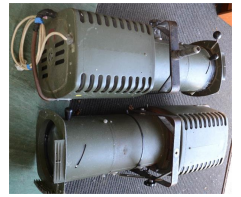
- 123 A white and chrome lamp, with adjustable head.
Est.£10-£20



- 124 A brushed steel angle poise lamp.
Est.£40-£60



- 125 A pair of Strand Follow stop lights, PATT793.
Est.£50-£80



- 126 A white and chrome table lamp.
Est.£20-£30



- 127 A pair of Strand Follow spot lights, PATT765.
Est.£50-£80



- 128 A marble sphere table lamp, 28cm high.
Est.£30-£50



- 129 A white plastic designer ceiling shade, 32cm high.
Est.£20-£40



- 130 An Art Deco chrome ceiling light with pale pink glass shades.
Est.£30-£50



- 131 A 1980s white standard lamp with angle adjustable shade, 134cm high.
Est.£10-£20



- 132 Two modern lamps.
Est.£20-£40



- 133 A New York skyline candle holder.
Est.£10-£20



- 134 A modern carved treen table lamp base.
Est.£10-£20



- 134A An Art Deco style table lamp; mermaid holding orb.
Est.£30-£50



- 135 A GFC retro fan in light green.
Est.£40-£60



- 136 A pair of kitch pale yellow glass and chrome shell form wall lights.
Est.£30-£50



- 137 A red Genie phone.
Est.£10-£20



- 138 A 1950s ceramic heater, and two Kenwood toasters.
Est.£10-£20



- 139 A silver brooch and earring set, silver and gold gilt porcelain roundels.
Est.£30-£40



- 140 A pair of silver Art Deco earrings, set with marcasite and jet.
Est.£40-£60



- 141 An Art Deco platinum and diamond ring, the two brilliant cut diamonds flanked by eight smaller diamonds in a rectangular canted design, 3.3g.
Est.£300-£500



- 142 An Art Nouveau platinum and diamond ladies cocktail wristwatch, circa 1920, with black leather strap, in the original presentation box; Nathan & Co., Manufacturing Goldsmiths & Silversmiths, 31 Corporation St, Birmingham.
Est.£250-£350



- 143 A Ruskin silver and ceramic brooch.
Est.£20-£40



- 144 A Studio designed necklace.
Est.£20-£40



- 145 An Art Nouveau silver brooch with Blue John cabochon set to the centre.
Est.£30-£50



- 146 Ola Gorie sterling silver vintage brooch.
Est.£30-£50



- 147 An Art Nouveau Charles Horner sterling silver brooch circa 1905.
Est.£30-£50



- 148 Ola Gorie sterling silver brooch 'Tulips' design.
Est.£40-£60



- 149 Charles Horner sterling silver bar brooch with Scottish agate oval to the centre, circa 1910.
Est.£30-£50



- 150 Georg Jensen silver bangle with chased floral design, London 1965.
Est.£40-£60



- 151 A sterling silver vintage Poodle brooch, signed.
Est.£20-£40



- 152 Ola Gorie sterling silver brooch 'Swimming Dolphins'.
Est.£40-£60



- 153 Ola Gorie sterling silver pendant and chain.
Est.£50-£80



- 154 Georg Jensen sterling silver locket and chain with chased floral design.
Est.£30-£50



- 155 Charles Horner Art Nouveau brooch.
Est.£40-£60



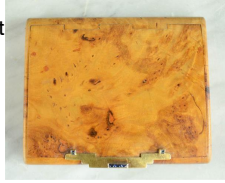
- 156 Ola Gorie sterling silver Osprey brooch.
Est.£40-£60



- 157 A silver Dunhill watch lighter, London 1938, Swiss Made watch with arabic dial, set in the line-decorated case.
Est.£70-£100



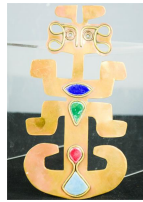
- 158 An Art Deco yellow metal, emerald and burr wood cigarette case, the clasp inset with emerald peaks.
Est.£200-£400



- 159 Three Art Deco period cigarette cases / compacts.
Est.£20-£40



- 160 An Arts & Crafts copper and enamel stylised figure 20cm high by 11cm.
Est.£20-£40



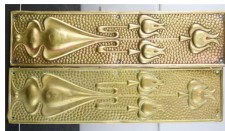
- 161 A Picquot ware tea set, Retro clock and tray.
Est.£10-£20



- 162 A Picquot ware tea service.
Est.£20-£30



- 163 A pair of Art Nouveau brass embossed door plates.
Est.£30-£50



- 163A A bakelite clock, 1950s evening purse and a retro vanity set in red case.
Est.£10-£20



- 164 A set of Swedish coasters, a treen pan stand, and a set of boxed knives.
Est.£10-£20



- 165 A group of Arthur Price cutlery.
Est.£20-£30



- 166 An Arthur Price of England set of knives and forks.
Est.£20-£40



- 167 A Harrods silver plated oval dish, 9cm high, 30cm wide.
Est.£40-£60



- 168 A group of five retro clocks.
Est.£20-£40



- 169 Sarah Webb (20th century): 'Mark' oil on board, together with a print, 29 by 29cm.
Est.£300-£500



- 170 Bruno Haas (20th century): Screen print, signed in pencil by the artist, 69 by 49cm.
Est.£40-£60



- 171 Tinsey (20th century): Purple Irises, limited edition screen print 21/200, 72 by 5cm.
Est.£30-£50



- 172 Stewart Lees (1926 - 2006 RSW, ARWS, ROI): Venice, acrylic and wash, signed in pencil, 53 by 54cm.
Est.£150-£250



- 173 Stewart Lees (1926 - 2006 RSW, ARWS, ROI): acrylic and wash, signed in pencil, 80 by 80cm.
Est.£300-£500



- 174 Andy Goldsworthy OBE (b. 1956): Costal Aura; Proposal for Isray Island, Scotland, pencil on paper, signed, 55 by 75cm.
Est.£1,000-£2,000



- 175 Andy Goldsworthy OBE (b 1956): Valle Du Bes Cairn; Reserve Geologique de Haute Provence 1999, Artists Proof, signed in pencil, 31 by 94cm.
Est.£800-£1,200



- 176 Stewart Marshall Lees ARWS, RSW, ROI, (20th century): Table Top Still Life, 54 by 58cm.
Est.£100-£200



- 177 Fenella Beauchamp (20th century): oil on canvas, tulips in a vase, signed, dated 2016, 51 by 40cm.
Est.£80-£120



- 178 Robert Motherwell (American, 1915-1991): screen print from his Africa series, circa 1965, 119 by 50cm.
Est.£150-£250



- 179 Peter Hedegaard, limited edition print, signed in pencil, 5/35, 56 by 75½cm.
Est.£30-£50



- 180 Jake Sutton, Francis Kyle Gallery poster, Map of England and Lutyens poster [Provenance: Ken Kirkwood Collection]
Est.£10-£20



- 181 Echo I, limited edition print, 15/25, indistinctly signed, 58 by 54cm.
Est.£20-£40



- 182 An original modern artwork by Hans Calvert, 122 by 61cm.
Est.£30-£50



- 183 Angela Stanbridge (20th century): Marmite, oil on canvas, 31 by 31cm.
Est.£20-£40



- 184 David Linley, pair of original watercolour designs; Credenza, 48 by 38cm.
Est.£40-£60



- 185 A Pablo Picasso print, Dove of Peace, 30 by 39½cm
Est.£10-£20



- 185A A modern art print, still life, monogrammed.
Est.£10-£20



- 186 Poster screen wash, modern art 'Pink' initialled DAS '96, 62 by 45cm.
Est.£20-£40



- 187 A Salvador Dali print 79 by 59cm
Est.£20-£30



- 188 M Ryhley (20th century) Orange Trees, mixed media, signed in pencil, 29 by 20cm
Est.£30-£50



- 189 M. Ryhley (20th century): Heart, mixed media, signed in pencil.
Est.£20-£40



- 190 JJ Adams, Portait of Audrey Hepburn Tattoo, limited edition 92/95, no 92, wishbone publishing. 49 by 39cm.
Est.£20-£40



- 191 M Ryhley (20th century): Whirlygig, mixed media, signed in pencil, 17 by 12cm.
Est.£20-£30



- 192 M. Ryhley (20th century): Orange and Blue, mixed media, signed in pencil, 17 by 12cm.
Est.£20-£30



- 193 M Ryhley (20th century) House, mixed media, 61 by 19cm.
Est.£20-£30



- 195 Gary Walton (20th century): Royal Britannia, oil on board. 34 by 24cm
Est.£70-£100



- 196 A Robin Wade ceramic wall mirror, Hollyhocks.
Est.£20-£30



- 197 A quantity of photographic equipment including filters.
Est.£20-£40



- 198 Canon photographic equipment: Lens FD100/2.8, Lens FD200/4.0, FD 300/4.0, all boxed.
Est.£50-£80



- 199 Canon AE-1 body, power winder A Focusing screen.
Est.£30-£50



- 200 A Goldring GR1 Table Top turntable.
Est.£20-£30



- 201 Canon Photograph equipment, T90 body, FD 28/2.8, Speedlite 300TL.
Est.£50-£80



- 202 A group of vintage cameras, a Corfiled, Zenith, Ensign, and accessories.
Est.£30-£50



- 203 A Photax reflector 30cm white Interfit light.
Est.£20-£40



- 204 A Billingham canvas camera bag.
Est.£20-£40



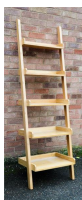
- 205 A 1960s sewing table.
Est.£20-£40



- 206 A Nathan coffee table, circular top, in oak.
Est.£40-£60



- 207 A modern beech set of graduated 'waterfall' bookcase.
Est.£40-£60



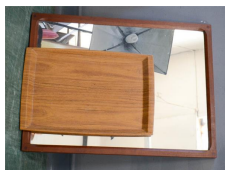
- 208 A Trolley and record cabinet.
Est.£10-£20



- 209 A retro kitchen unit, 53cm by 107 by 91cm.
Est.£20-£30



- 210 A teak tray and similar style mirror.
Est.£20-£30



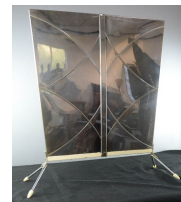
- 211 A 1930s hat stand.
Est.£70-£100



- 212 An Art Deco dining table, by the Jules Grosso Factory, the top having a drawer at each end, above the base of semi elliptical form.
Est.£200-£400



- 213 A stainless steel Art Deco fire guard.
Est.£30-£50



- 214 A retro compactum wardrobe, with labelled drawers of various sizes, 189 by 107 by 49cm.
Est.£60-£90



- 215 A pair of 1950s leather armchairs. A/F
Est.£30-£50



- 216 A leather 1950s armchair. A/F
Est.£20-£30



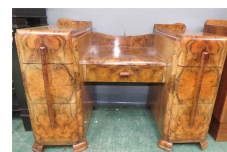
- 217 A small teak sidecupboard with four drawers, and one cupboard door.
Est.£60-£90



- 218 A teak table with folding top and baised lined interior.
Est.£10-£20



- 219 A 1930s walnut veneered dressing table, with mirrored back.
Est.£100-£200



- 220 A 1930s walnut veneered desk with glass top, shaped front, and a series of drawers.
Est.£100-£200



- 221 A 1950s vintage retro Jazz formica table with musical instruments in the Fornasetti style to the top. Est.£40-£60



- 222 A 1930s oak stained bookshelf with Art Deco style detailing. Est.£40-£60



- 222A A beech contemporary magazine stand and a retro chair. Est.£20-£30

- 223 A G-Plan display unit, with two glazed doors, open upper shelf and two cupboard doors below. Est.£30-£50



- 224 A cupboard and shelving unit composed of teak cupboard sections, and shelves. Est.£80-£120

- 228 A G-Plan corner unit. Est.£20-£30



- 229 A G-plan corner unit with two doors and open upper section. Est.£20-£40



- 230 A G-Plan cabinet with two doors and corner shelves. Est.£20-£40



- 231 A G-Plan corner cupboard, open shelves and two cupboard doors below. Est.£20-£40



- 232 A child's desk, with cast iron base, and beech top. Est.£30-£50



- 225 A Nathan dining table and set of six 1960s dining chairs including two carvers. Est.£50-£80



- 232A Three circular white painted metal wall mirrors [Provenance: Ken Kirkwood Collection] Est.£20-£30

- 226 A G-Plan nest of tables. Est.£10-£20



- 233 A Retro red and white leather footstool. Est.£20-£40



- 227 A G-Plan side unit; four drawers over two cupboard doors. Est.£40-£60



- 234 A pair of blue Italian leather armchairs [Provenance: by reputedly from the penthouse office at Cafe Royal, London] Est.£100-£200



234A Two mid century design square stands.



235 A Kartell side cabinet designed by Anna Castelli, Italian mid century.
Est.£30-£50



236 A pair of vintage swivel base dentist chairs.
Est.£30-£50



237 A 1960s coffee table with faux rosewood veneer, and circular smokey glass top, 85cm diameter, 45cm high.
Est.£10-£20

237A A set of eight 1970s dining chairs with black leatherette backs and seats.
Est.£20-£30

238 An adjustable workmans adjustable stool, octagonal shape, enamelled base.
Est.£20-£40



239 A mid century design easy chair, ebonised.
Est.£20-£40



240 A circular white wall mirror. 54cm diameter.
Est.£20-£40



241 A mid 20th century design long coffee table with rattan under shelf.
Est.£80-£120



242 A 1960s teak Danish armchair with flip back.
Est.£30-£50



243 A 1960s teak Danish armchair with flip back, original teal upholstery.
Est.£40-£60



244 A pair of Art Deco burr walnut desk chairs.
Est.£150-£250



245 A mid 20th century design architects table, with fold out lid, and two drawer to the front inset with brass handles.
Est.£100-£200



246 A glass top tree root table.
Est.£150-£250



247 A set of Danmark FH dining chairs and table.
Est.£100-£200



248 Style of Mies van der Rohe for Knoll 'Barcelona' chair and footstool.
Est.£400-£600



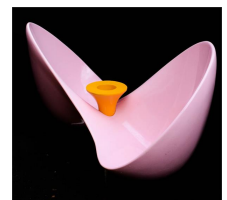
- 249 A Peiff red leather and chrome framed swivel chair.
Est.£200-£400



- 250 A Wassily polished steel and tan leather chair designed by Marcel Breuer, 78cm wide. [Provenance: Leslie Gooday OBE sold by Woolley & Wallis October 2013]
Est.£200-£400



- 251 A Veuve Cliquot love-seat, serial no 131, bearing signature plaque to the chrome base.
Est.£300-£500



- 252 A Royal Crown Derby Tawny Owl, MMIII, 9cm high.
Est.£20-£40



- 253 A Royal Crown Derby owl LXII, 8cm high.
Est.£20-£30



- 254 Royal Worcester The Connoisseur Collection Snowy Owl, 11cm high.
Est.£20-£40



- 255 A group of Lladro, all boxed.
Est.£40-£60



- 256 A Lladro group of figures, and others, all boxed.
Est.£30-£50



- 257 J. Ucbach: Nov '96 ceramic model of a pig, studio pottery, signed to the base, 11cm high.
Est.£30-£50



- 258 A ceramic and metal model pear.
Est.£10-£20



- 259 A Royal Crown Derby coffee can, together with a pair of black and white Fenton cups and saucers 'Rustic' depicting horse scenes.
Est.£20-£40



- 260 A group of four Lladro figures.
Est.£30-£50



- 260A A Lladro figure; sleeping Japanese man.
Est.£10-£20



- 261 A Royal Doulton doll, with original box and certificates.
Est.£20-£40



- 262 A 'tree stump' jardiniere.
Est.£10-£20



- 263 A set of four butterfly tiles.
Est.£30-£50



- 264 A set of Bunnykins Children's ceramics.
Est.£10-£20



- 265 A Dresden porcelain figure of a woman, 19th century, bearing makers mark to the base. 19cm tall
Est.£40-£60



- 266 A pair of Bavarian porcelain plates, with pierced borders, 21cm diameter.
Est.£10-£20



- 267 An 1888 commemorative beaker, 9cm high.
Est.£10-£20



- 268 A Victorian Atkinsons Cold Cream pot, and two Denby oil/balsamic jugs.
Est.£20-£30



- 269 A Royal Doulton part tea service.
Est.£40-£60



- 270 A child's Garland Bisto part dinner service including three lidded tureens, dinner plates, side plates and various platters.



- 271 A Coalport Bone china part tea service 'Junetime' pattern.
Est.£30-£50

- 272 A group of mixed ceramics including a pair of Trentham vases, Guilford vase, Rainham jug, basket shaped vase. (5)
Est.£30-£50

- 273 A quantity of ceramics, including a large Victorian platter, Carlton ware etc.
Est.£20-£30



- 273A Four Prattware pot lids; 'If Ever I Plant In That Bosom a Thorn', 'Shakespeares House Henley St Stratford', The 'Room in Which Shakespeare was Born 1564'.
Est.£20-£30



- 274 A plasterwork wall plaque modelled with the portrait of a fisherman.
Est.£20-£40



- 275 A mixed group of items including a Ducal ware jardiniere, painted treen parrot, group of minerals and semi precious stones, and a Worcester biscuit barrel.
Est.£20-£40



- 276 A 19th century bronze repousse Tibetan charger, cast in relief to depict a Buddah, 39cm.
Est.£30-£50



- 277 A 19th century Chinese Famille Verte charger, 40cm diameter.
Est.£40-£60



- 278 A pair of bronzed Indian Goddess heads.
Est.£30-£50



- 279 A jade carved Chinese censor on tree stand.
Est.£30-£50



- 287 A Magnum Tattinger Champagne bottle, 59cm high. (no contents)
Est.£30-£50



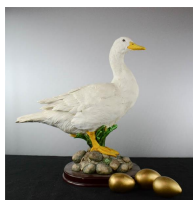
- 280 A pair of small Chinese stoneware glazed vases.
Est.£20-£40



- 288 A glass and brass display trinket cabinet.
Est.£20-£40



- 281 A model duck, with three golden eggs.
Est.£30-£50



- 289 Two coloured glass jars/tea light holders, one blue and one green.
Est.£10-£20



- 282 A model owl on stand.
Est.£30-£50



- 290 A glass vase of blue fishermans glass balls, and a glass bud vase.



- 283 A blue and white jar and cover.
Est.£10-£20



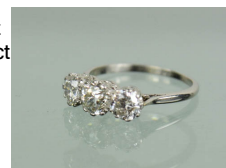
- 291 An 18ct white gold wedding band, engraved inside '1682 N', 4g.
Est.£70-£100



- 284 A French terracotta twin handle pot, and two ceramic basket weave jardineres.
Est.£10-£20



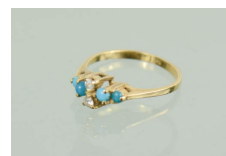
- 292 A diamond and unmarked white gold ring, the three brilliant cut diamonds set in a scrollwork claw setting, approx 2.8ct diamond, 4.1g.
Est.£2,000-£4,000



- 285 A quantity of Swarovski figurines, and a flower form candle holder in the original Swarovski box.
Est.£40-£60



- 293 A gold, diamond and turquoise ring, marked 14K, the two diamonds flanked by turquoise to the shoulders, 2.1g.
Est.£20-£40



- 286 A quantity of cut crystal and glassware.
Est.£10-£20



- 294 An 18ct gold ring set with emerald and chip diamonds.
Est.£30-£40



- 295 An 18ct white gold and diamond ring, with seven old cut diamonds approximately 0.3ct each, London 1977, 3g.
Est.£80-£120



- 296 An 18ct gold emerald and diamond ring.
Est.£140-£160



- 297 A 9ct gold and Brazilian blue topaz ring, approximately 12cts.
Est.£400-£600



- 298 An 18ct gold and sapphire ring, set with six square cut sapphires, 2.6g.
Est.£40-£60



- 299 A group of three rings, including one diamond ring, one with oval agate, and another A/F.
Est.£20-£40



- 300 A 9ct gold ring, of flowerhead form, set with a central seed pearl bordered by turquoise roundels. 5.1g.
Est.£50-£80



- 301 A 9ct gold Victorian brooch together with a yellow metal ring set with red and white paste stones., 3.7g total.
Est.£30-£50



- 302 A 9ct gold ring with blue oval cut stone and seed pearl border, 5.7g total.
Est.£50-£80



- 303 A 9ct gold and amethyst ring, the decoratively pierced sides set with a central oval cut amethyst, 4.2g.
Est.£40-£60



- 304 A 9ct gold and oval cut yellow topaz ring, flanked with three white paste stones to the shoulders, 2.9g.
Est.£30-£50



- 305 Two 9ct gold dress rings, one with pink oval cut stone, the other in white with cluster border, 5.6g total.
Est.£50-£80



- 306 A 9ct rolled gold signet ring.
Est.£10-£20



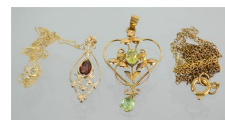
- 307 A 9ct gold Victorian pendant, set with a central circular amethyst and opal oval drop pendant 2.4g.
Est.£20-£30



- 308 A 9ct gold and amethyst Victorian brooch / pendant, with safety chain, the large central oval amethyst bordered by open scrollwork and seed pearl set flowerheads, 6.1g.
Est.£40-£60



- 309 Two yellow metal pendants and chains, one with red pear drop cut stone to the centre, and the other with pale green central oval, 4.7g.
Est.£30-£50



- 310 A 9ct gold H & W pendant, with safety chain, with bow to the top, and two foliate strands leading to a pear drop pendant, 1.6g.
Est.£20-£40



- 311 Two 9ct gold open worked pendants; one set with central pink rectangular cut stone and seed pearl embellishments, and the other with blue and pink topaz, 5.1g total.
Est.£40-£60



- 312 A 9ct gold Art Nouveau style pendant and safety chain, set with red paste stones and drop pendant, 2.3g.
Est.£20-£40



- 313 A Victorian 9ct gold, seed pearl and green paste pendant, in a stylised floral design with drop pendant, 3.6g.
Est.£30-£50



- 314 A 9ct gold, peridot and seed pearl pendant, 2.5g.
Est.£30-£50



- 315 A silver, and pale blue paste set pendant necklace, with marcasite and seed pearl embellishments to the foliage and bow top, marked 925, with silver chain.
Est.£30-£50



- 316 A yellow metal and seed pearl brooch in the form of a floral spray with pendant flower, 4.4g.
Est.£40-£50



- 317 A 9ct gold oval pendant with pierced sides, 2.9g, and a brooch depicting two doves.
Est.£20-£40



- 318 A 9ct gold and amethyst oval pendant and a 9ct gold flowerhead pendant with central diamond, 5.9g total.
Est.£30-£50



- 319 An 18ct gold brooch / pendant, the portrait miniature depicting a woman with feather headdress embellished with diamonds and wearing a necklace set with small emerald, within an engraved and ropetwist border, with safety chain, 13.9g.
Est.£300-£500



- 320 A white gold and diamond brooch, the central old cut diamond set in a flower head fashion, with six further diamonds, and flanked by three graduated diamonds, with safety chain, approximately 3.2ct diamond, 4.6g total, in the original presentation box; J Scott The Cash Jeweller 38 North Street, Taunton.
Est.£2,000-£4,000



- 321 A silver, emerald and ruby necklace pendant, the centre composed of two peacocks set with ruby eyes, and standing on a platform of six square cut emeralds, within a decorative border of white paste stones, and pendant pearl, marked 800, 0.31toz.
Est.£200-£400



- 322 A 15ct gold and seed pearl necklace, the central flowerhead flanked by foliate spray and garland links, embellished with seed pearls 7.4g.
Est.£200-£400



- 323 A 15ct gold and seed pearl necklace; the central flowerhead flanked by foliate spray links and further links set with graduated seed pearls, with a barrel clasp; Patent 75 - 08, 7.9g.
Est.£200-£400



- 324 An 18ct gold happy diamond Chopard heart pendant and chain, the glass fronted open heart containing five moving diamonds, set with twenty diamonds to the border, the diamonds totalling approximately 1.25ct, 10.3g.
Est.£1,500-£2,000



- 325 A group of various necklaces.
Est.£10-£20



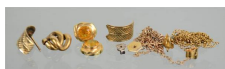
- 326 An amethyst and marcasite brooch and pair of earrings.
Est.£20-£30



- 334 A yellow metal tie pin in the original case, 1.2g.
Est.£30-£50



- 327 A group of scrap gold including earrings, necklaces etc, 5.3g.
Est.£30-£50



- 335 A 9ct gold chain link necklace, 11.6g.
Est.£80-£120



- 328 A 9ct white gold crucifix pendant and chain.
Est.£40-£60



- 336 Three rings, one with oval opal.



- 329 A 9ct gold cameo brooch, with oval scrollwork setting, the cameo carved with child praying, 19.6g total.
Est.£120-£140



- 337 A pair of 9ct gold cufflinks, 5.3g.
Est.£30-£50



- 330 An enamel and marcasite brooch in the form of a swan, 4cm wide.
Est.£10-£20



- 338 A yellow metal and pearl bangle, composed of three flowerheads set with seed pearls, with safety chain. 15g.
Est.£140-£160



- 331 A 9ct gold, seed pearl pendant, 5.3g.
Est.£50-£80



- 339 A 9ct gold tie pin, together with a small 9ct gold filagree brooch, 4.6g total.
Est.£40-£60



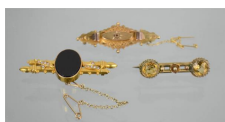
- 332 A silver charm bracelet with twelve charms, and a bangle and three pendants, 2.86toz.
Est.£30-£50



- 340 A pair of yellow metal and amethyst earrings, the scrollwork setting with central pear cut amethysts.
Est.£20-£40



- 333 A 9ct gold Victorian sweetheart brooch, with chip diamond, a mourning brooch set with oval black agate and a 12ct citrine brooch.
Est.£130-£160



- 341 A 9ct gold locket pendant, 3.5g.
Est.£30-£50



- 342 A 9ct gold bracelet with safety chain, 5.4g.
Est.£40-£60



- 351 An 18ct gold cased wristwatch, with Arabic dial, and brown leather strap.
Est.£40-£60



- 343 A 9ct gold chain necklace, 9.4g, A/F
Est.£60-£90



- 352 A 9ct gold ladies Rotary wristwatch, with 9ct gold strap and safety chain and St Christopher tag. 11.7g.
Est.£150-£250



- 344 A 9ct gold chain necklace, with fanned quadruple links, 14g.
Est.£120-£160



- 353 A jewellery box containing various pairs of earrings.
Est.£30-£50



- 345 A 9ct gold necklace with letter M pendant, 5.3g.
Est.£40-£60



- 354 Two pairs of yellow metal earrings, 2.7g.
Est.£20-£40



- 347 A 9ct gold charm bracelet with ten charms and heart form clasp and safety chain, London 1970.
Est.£600-£800



- 355 A group of four pearl necklaces, one freshwater pearl necklace.
Est.£30-£50



- 348 A 9ct gold Rolex, ladies wristwatch, no 42507, 2580 Certund, 14.6g.
Est.£100-£200



- 356 Two yellow and white metal rings and a 9ct white gold ring, set with paste, 5g total.
Est.£40-£60



- 349 A 9ct gold Avia ladies wristwatch, in a cushion shaped case with bark design links, London 1979, 13.8g total.
Est.£100-£200



- 357 A group of jewellery to include silver fob, brooches, cameo etc.
Est.£20-£30



- 350 A 9ct gold cased Buren wristwatch.
Est.£40-£60



- 357A A jewellery box containing earrings, necklaces, watches, coins and other jewellery.
Est.£10-£20



- 358 A pair of silver cufflinks, and a silver identity bracelet 0.63toz.
Est.£20-£30



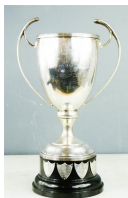
- 359 Two silver napkin rings, and a silver paperclip / page marker.
Est.£20-£30



- 360 A silver salver, Sheffield 1973, 10.95toz.
Est.£120-£140



- 361 A silver trophy to Isle of Ely Education Committee, London 1927, 17.23toz, the ebonised base bearing later plaques, together with wooden presentation box.
Est.£120-£140



- 362 A 19th century rosewood box containing various George III, Victorian, William IV cutlery, some silver, combined weight 26.21toz.
Est.£300-£400



- 363 A silver milk jug and matching slop bucket, both engraved with dogs to the front, Birmingham 1918, 16.03toz.
Est.£180-£260



- 364 A silver hand mirror and brush embossed with decoration, together with a dressing table pot with silver lid and an inkwell 3.1toz.
Est.£50-£80



- 365 A silver teapot with engraved bird to the front, Sheffield 1927, 21.14oz.
Est.£240-£360



- 366 An Indian white metal articulated fish modelled as an Arowana fish, 17cm long.
Est.£20-£30



- 367 A quantity of silver plateware including a tray, cigarette box and flatware, bracelet, tea pot etc.
Est.£30-£50



- 368 A group of five silver spoons, a shoe form pin cushion, a silver pocket watch fob and a pocket watch holder.
Est.£20-£40



- 369 A silver salt with blue liner, a silver sauce spoon, a silver topped bottle and a silver box engraved with the initial B to the top, 4½ by 10 by 8cm.
Est.£30-£50



- 370 A white metal Hindu palm, 17cm tall.
Est.£10-£20



- 371 A group of silverplate ware including a Regency style candlestick, pair of urn form salts, dishes, bowls, pewter tankard and brass Christmas candleabra.
Est.£20-£40



- 372 A quantity of silver plate flatware including a silver and horn spoon.
Est.£20-£30



- 373 A silver plated hip flask, whisky flask and another. (3)
Est.£20-£40



- 374 A canteen of silver plated cutlery.
Est.£10-£20



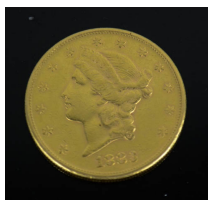
- 375 A quantity of pocket watches, chrome, gold plated and others. (8)
Est.£40-£60



- 376 A pair of silver sugar tongs, George III, together with a silver hand mirror embossed with scrollwork.
Est.£20-£40



- 377 An 1883 USA 20 Dollars with double eagle, 900 (21ct gold) 33.43g, 34mm diameter.
Est.£800-£1,200



- 378 A USA 1897 Ten Dollars, eagle, 900 (21ct gold) 16.71g, 27mm diameter.
Est.£400-£600



- 379 A Century of Empire Collection gold on silver ingots with original certificate, leaflets and booklet, in original box, 14.67toz.
Est.£160-£180



- 380 Treasures from the Royal Collection, gold plated on silver ingots, in original box, 14.37toz.
Est.£160-£180



- 381 A Centenary of Sir Winston Churchill gold plated silver set of ingots, boxed, 21.15toz.
Est.£220-£240



- 382 A quantity of coins dating from the 18th century to the present day, English and Worldwide, including some proofs and some silver.
Est.£30-£50



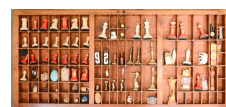
- 383 Royal Mint Collector Coins: Eightieth Birthday 2006 Her Majesty Queen Elizabeth II Silver Proof coin collection, with original box, packaging, booklet and leaflet.
Est.£50-£80



- 384 Silver proof coin collection: The Golden History of Powered Flight (5), and Legendary Fighting Ships (5) together with a group of commemorative coins in presentation box.
Est.£30-£50



- 385 An antique stamp drawer containing collectors items including a stained bone 19th century chess set, inlaid brooches, silver topped dressing table pot, original perfume bottles, Chinese carved pendant depicting a dragon, brass miniature candle sticks etc. 37 by 82cm.
Est.£70-£100



- 386 A miniature mannequin, articulated, together with a mother of pearl fountain pen, cigar cutter, pipe and glove stretcher.
Est.£20-£40



- 387 A pair of Gentleman's riding boots, black leather, with leather soles, size 9.
Est.£30-£50



- 388 A pair of Riding boot trees, possibly to fit a size 9 boot, four part sectional.
Est.£30-£50



- 389 A pair of Gentlemen's leather riding boots, size 9E.
Est.£30-£50



- 390 A riding crop, walking cane with owl handle, and a policeman's hat.
Est.£10-£20



- 391 A Canon camera with two Tamron lenses.
Est.£40-£60



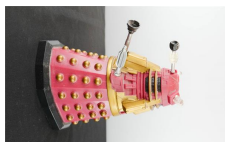
- 392 An Olympus camera and tripod.
Est.£30-£50



- 393 Two model tractors.
Est.£20-£40



- 394 A model Dalek.
Est.£10-£20



- 395 A group of toy cars, boxed.
Est.£10-£20



- 396 A group of model vehicles.
Est.£10-£20



- 397 A wooden carved owl on stand.
Est.£10-£20



- 398 A carved model of a tortoise.
Est.£10-£20



- 399 A model cockerel wearing a chef's hat, and a further cockerel.
Est.£10-£20



- 400 A wooden carved and painted model cow, chicken and sheep.
Est.£10-£20



- 401 A group of The Eagle magazines.
Est.£10-£20



- 402 A quantity of vintage jigsaws.
Est.£20-£30



- 403 Three model vintage racing cars, two in red, one yellow.
Est.£20-£40



- 404 Dinky Toys: a model fire engine and lorry, both with original boxes.
Est.£20-£40



- 405 A model Bubble car in baby blue.
Est.£10-£20



- 406 A model Ferrari in red.
Est.£20-£30



- 407 A model Mini in red.
Est.£20-£30



- 408 A quantity of Dinky and other model vehicles.
Est.£20-£30



- 409 A quantity of Railway related books.
Est.£20-£30



- 410 A quantity of Railway related books.
Est.£10-£20



- 411 A large Paddington bear teddy.
Est.£30-£50



- 412 A group of vintage clothing patterns and an antique shawl.
Est.£10-£20



- 413 A vintage leather driving coat, with chequered flag detail.
Est.£20-£30



- 414 A Victorian silk and lace christening dress.
Est.£20-£40



- 415 A St Johns Ambulance vintage triangular sling,
Est.£20-£40



- 416 A leatherette suitcase containing various books.
Est.£10-£20



- 417 Three leather handbags.
Est.£10-£20



- 418 A Clarinet in case.
Est.£20-£40



- 419 A Fender guitar in hard case.
Est.£80-£120



- 420 Books: JM Barries Peter Pan in Kensington Gardens, Hodder & Stoughton, The Three Musketeers by Alexandre Dumas, Black Beauty by Anna Sewell.
Est.£20-£40



- 421 A quantity of model houses.
Est.£10-£20



- 422 A brass egg timer, 15cm high.
Est.£10-£20



- 423 A candlestick phone.
Est.£20-£30



- 424 A group of cigarette cases and two lighters.
Est.£20-£30



- 425 A tripod and case, leather instrument case, strap and stand.
Est.£10-£20



- 426 A Victorian brass telescope in the original leather red velvet lined case, with various lenses.
Est.£60-£90



- 427 A Theodolite and stand, the top section in a leather case Helio 5" Mk V T.B.S.
Est.£200-£400



- 428 A Stanley of London Pantograph, complete with the original box.
Est.£100-£200



- 429 A Heath International Ltd. scientific instrument, no. 4993, in original box 65cm long, with key and loop.
Est.£70-£100



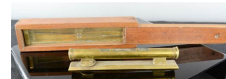
- 430 A Stanley of London brass compass, together with original leather case.
Est.£40-£60



- 431 A quantity of scientific and other instruments, including a steel Chesterman of Sheffield rules, compasses etc.
Est.£20-£30



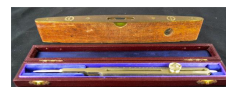
- 432 A 19th century brass gauge contained in a green box with slide lid, together with a brass spirit level of barrel form, with adjustable wheel.
Est.£30-£50



- 433 A 19th century mathematicians set, complete in original box, and bone etched rule.
Est.£30-£40



- 434 A steel compass, in original case together with an Alvatica 522 spirit level.
Est.£10-£20



- 435 A 19th century Mathematicians set, an Abraham of Liverpool ruler, two brass weights.
Est.£20-£40



- 436 A brass compass and leather case, stamped N.C.C.
Est.£30-£50



- 437 A mathematicians set, in a mahogany box inside lid 'AG Thornton of Manchester', complete with contents in two layers.
Est.£50-£80



- 445 An antique The Gem, USA tool.
Est.£10-£20



- 438 A Waterlow & Sons Limited Manufacturers of London set of letter stamps, in original box with name plaque to the top.
Est.£30-£50



- 446 A bar pump.
Est.£10-£20



- 439 A miniature zippo lighter, Japanese inlaid bracelet, bone carved pill box and bracelet, brooch etc.
Est.£20-£30



- 447 A Vono knife cleaner.
Est.£20-£30



- 440 Two boxes, one tooled leather clad.
Est.£10-£20



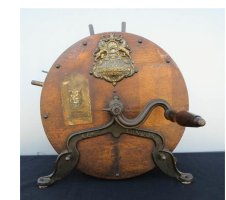
- 448 A Victorian crimping machine.
Est.£10-£20



- 441 A cigar case, treen boot pull holder, and a lignum vitae bowl.
Est.£20-£30



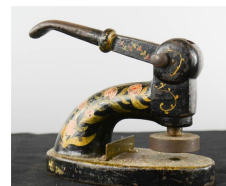
- 449 A Kent of London antique knife sharpener.
Est.£60-£90



- 442 A brass compass.
Est.£10-£20



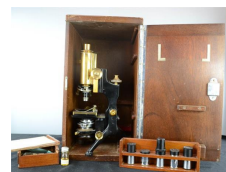
- 450 A French cast iron press / stamp.
Est.£20-£30



- 443 A group of brass stamps.
Est.£20-£30



- 451 A microscope, with additional lenses, accessories and original box.
Est.£40-£60



- 444 A brass 'Lift' button, 'Push Once' chrome button and another.
Est.£20-£30



- 452 A Stamford iron tractor seat.



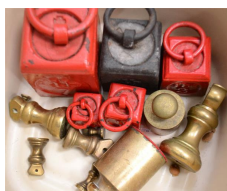
- 453 A Bamford and Pierce iron tractor seat.
Est.£20-£40



- 454 Two whistles, a doll top, a gavel.
Est.£10-£20



- 455 A quantity of weights.
Est.£10-£20



- 456 A Briar pipe; boxed, and a cigar cutter.
Est.£10-£20



- 457 A Meerschaum pipe carved with a horse, with amber tip, in a case.
Est.£20-£30



- 458 A pipe, carved in the form of a woman's hand.
Est.£10-£20



- 459 A Meerschaum pipe in the form of a ladies head, and another with silver collar.
Est.£20-£40



- 460 A quantity of lighters, some Ronson examples.
Est.£10-£20



- 461 A large quantity of various watches including Avia, Triumph etc.
Est.£20-£40



- 462 A wooden model 'Brunelleschi's dome'.
Est.£100-£150



- 463 An antique mahogany table top display cabinet with drop down mirrored door.
Est.£40-£60



- 464 A treen spinning wheel.
Est.£30-£50



- 465 A miniature chaise longue.
Est.£50-£80



- 466 A 19th century elm child's Windsor armchair.
Est.£30-£50



- 467 A group of leather purses, note pads, calendar and other items.
Est.£20-£40



- 468 A miniature pine chest of drawers, two short over three long drawers, 41 by 36 by 21cm.
Est.£30-£50



- 469 An oak spice rack, composed of various sized drawers and pigeon holes, the upper apron carved with leaf decoration, containing spice jars, 26 by 65cm.
Est.£50-£80



- 477 An Indian brass engraved box, 4½ by 15 by 8cm.
Est.£20-£40



- 470 Rivesaltes 1949 Vin Doux Naturel 75cl.
Est.£20-£40



- 478 A Victorian seat cane, Purdey design.
Est.£20-£40



- 471 Ayala Champagne Demi-Sec.
Est.£30-£50



- 479 An antique brass and wooden model cannon.
Est.£50-£80



- 472 A treen boomerang, 59cm long.
Est.£10-£20



- 480 A bronze Staffie dog.
Est.£50-£80



- 473 A group of treen games, including the peg game.
Est.£10-£20



- 481 A bronze bull dog.
Est.£120-£140



- 474 A Treen bentwood tea caddy and cover.
Est.£10-£20



- 482 A bronze fountain in the form of a pixie.
Est.£300-£400



- 475 An oak box, marquetry trinket box and an oval plaque carved with an urn; Regency style.
Est.£20-£40



- 483 An Art Deco style bronze figure.
Est.£140-£160



- 476 A Regency marquetry tea caddy of oval form, inlaid to the top with a shell motif and the front with an urn issuing floral garlands, 12cm high.
Est.£30-£50



- 484 A bronze figure of a woman nursing a baby, 39 high.
Est.£80-£120



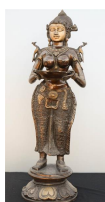
- 485 A bronze figure of a lady drying hair on a green marble base.
Est.£50-£80



- 486 Isaac Toyisapari carved stone African bust, 12cm high.
Est.£10-£20



- 487 A large bronze Indonesian figure.
Est.£80-£120



- 488 A miniature bust of David, on ebonised plinth, 14½cm high.
Est.£20-£40



- 489 A 17th century alabaster carved head of a young boy, raised on a modern plinth, 22cm high.
Est.£100-£200



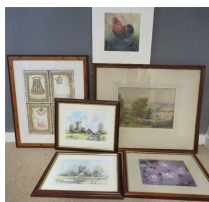
- 490 A resin carved horse head on plinth, 21cm high.
Est.£40-£60



- 491 A tall marble vase, 41cm high.
Est.£20-£40



- 492 A quantity of prints and pictures, including a watercolour, fashion design prints, and others.
Est.£10-£20



- 493 Two signed prints.
Est.£20-£40



- 494 Two signed prints
Est.£20-£40



- 495 Blue Bird, mixed media, box frame, indistinctly signed in pencil, 49 by 49cm.
Est.£20-£30



- 496 Signed print
Est.£10-£20



- 497 Simon Bull, Poppy Splendour, original acrylic, 64 by 64cm.
Est.£10-£20



- 498 A group of pictures, to include: Elaine Marshall; Balcony Ceret. 39/50, Nicholas Barnham, Winter Trees, etc.
Est.£10-£20



- 499 A group of pictures to include 19th century prints of birds, a pin ball game, an oval tray with floral embroidered panel.
Est.£10-£20



- 499A A quantity of watercolours, sketches and prints, various artists.
Est.£20-£40



- 500 Leighton Maybury, hand painted bone china plaque, No. of Fires - No. 8, dated 1984, detail verso, 34 by 24½cm.
Est.£200-£400



- 508 A Japanese needlework panel, in silk, depicting lady sweeping and man with a walking cane, 65 by 48cm.
Est.£30-£50



- 501 E. Mary Burgess, pair of watercolours, John Knox's House, Edinburgh and Tolbooth Cannongate, Edinburgh.
Est.£100-£200



- 509 A quantity of postcards.
Est.£10-£20



- 502 Still life of flowers, oil on board, 17 by 8cm.
Est.£10-£20



- 510 Two albums of vintage and collectable postcards, including black and white scenes, colour 'naughty' examples.
Est.£40-£60



- 503 Kazariano 1963, oil on board, portrait of a man with green cap, 23 by 16cm
Est.£20-£30



- 511 A quantity of 1920s and later cigarette cards, tea card albums and a quantity of postcards including black and white.
Est.£20-£30

- 504 Mary Rodgers (20th century): Hounds in Water, Ferney, oil on canvas, signed lower right, 50 by 60cm.
Est.£500-£600



- 512 Two French enamelled advertising signs, and a further sign.
Est.£20-£40



- 505 A pair of landscape watercolours.
Est.£20-£40



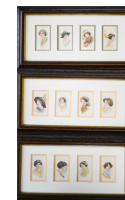
- 513 Two albums of postcards.
Est.£20-£40



- 506 E. Hogarth, watercolour, still life with flowers.
Est.£30-£50



- 514 A group of three framed cigarette card collections.
Est.£20-£40



- 507 Robert Ixer, oil on board.
Est.£20-£30

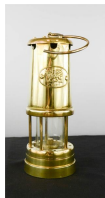
- 515 A framed set of rare black and white female portrait cigarette cards circa 1920.
Est.£30-£50



- 516 Three enamel signs.
Est.£10-£20



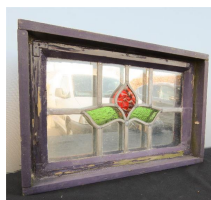
- 517 A Welsh brass lantern.
Est.£10-£20



- 518 A lantern, owl and cast iron painted doorstop.
Est.£10-£20



- 519 A stained glass window/mirror.
Est.£10-£20



- 520 A continental style mirror, in the form of a window.
Est.£20-£30



- 521 A pair of urns converted into a lamp base.
Est.£20-£40



- 522 An antique lantern.
Est.£10-£20



- 523 An antique brass lantern, converted to electric.
Est.£40-£60



- 524 A 19th century brass carriage lamp, painted black.
Est.£30-£50



- 525 An antique lamp.
Est.£20-£40



- 526 A 19th century black painted lantern.
Est.£20-£30



- 527 A 19th century brass carriage lantern.
Est.£30-£50



- 528 A pair of candlesticks, 42cm high.
Est.£10-£20



- 529 A group of lamps, including a red parafin lamp.
Est.£10-£20



- 530 A Tiffany style ceiling shade.
Est.£30-£40



- 531 A group of garden and other lanterns, one antique lamp in red, a star form lantern etc.
Est.£30-£50



- 532 A chrome five branch candleabra.
Est.£20-£30



- 539 Three boxed Gentleman's wristwatches.
Est.£30-£50



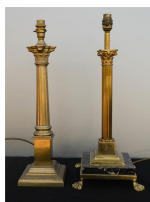
- 533 A Victorian green and gilt decorated lustre.
Est.£40-£60



- 540 An ebonised mantle clock.
Est.£10-£20



- 534 Two brass table lamps in the form of columns.
Est.£20-£40



- 541 An ebonised wooden mantle clock, with an arabic dial.
Est.£20-£40



- 535 A marble lamp / jardiniere stand, 77cm high.
Est.£20-£40



- 542 A modern skeleton clock in glazed mahogany case.
Est.£30-£50



- 536 An Ikea desk lamp.
Est.£10-£20



- 543 A brass carriage clock.
Est.£10-£20



- 536A A bronze style lamp; woman and child raising orb shade.
Est.£30-£50



- 544 A Vienna regulator with mahogany case.
Est.£30-£50



- 537 Two standard lamps, one with a 'Tiffany' style shade; 177cm high, the other 181cm high
Est.£20-£30



- 545 A Jones & Co reproduction wall clock.
Est.£10-£20



- 538 A Rolex type wall clock.
Est.£80-£120



- 546 A bracket wall clock, brass and mahogany.
Est.£30-£50



- 547 Two wall barometers.
Est.£10-£20



- 555 Three Indian wooden printing blocks.
Est.£10-£20



- 548 A Georgian mahogany fret carved wall mirror with ho ho bird to the crest. 73 by 41cm
Est.£30-£40



- 556 A Victorian black laquered glove box containing two fans.
Est.£10-£20



- 549 A wall mirror, with carved crested top in the Regency style.
Est.£20-£30



- 557 A pair of bronze model Indian elephants.
Est.£30-£50



- 550 A 19th century mahogany box with brass shield plaque.
Est.£10-£20



- 558 A quantity of smoking ephemera, vintage tins, etc.
Est.£10-£20



- 551 A 19th century rosewood box, with red silk lined and fret carved interior.
Est.£20-£40



- 559 A pair of iron shackles, and an iron chain.
Est.£20-£40



- 552 A garniture set.
Est.£20-£40



- 560 A brushed steel model aeroplane.
Est.£20-£40



- 553 A group of collectable buttons and badges.
Est.£10-£20



- 561 A tea pot in the form of a red phone box.
Est.£10-£20



- 554 A group of ceramic model houses and LOVE ceramics.
Est.£10-£20



- 562 A quantity of camera equipment and leads, with video camera and cases.
Est.£10-£20



- 563 Two etched glass ornaments and keyring.
Est.£10-£20



- 571 A glass table lamp.
Est.£10-£20



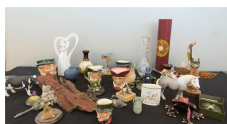
- 564 A mixed group of ceramics including blue tea pot.
Est.£10-£20



- 572 A group of trinkets, jewellery stand etc, together with ceramics (2 boxes)
Est.£10-£20



- 565 A miscellaneous group of items including character jugs.
Est.£10-£20



- 573 A group of collectable tins.



- 566 A quantity of glassware, including whisky tumblers.
Est.£10-£20



- 574 A footstool, stand and a green painted tray on stand.
Est.£10-£20



- 567 A Victorian mahogany toilet mirror.
Est.£20-£30



- 575 A quantity of mixed silver plate flatware, two mantle clocks, and a vintage wedding headdress.
Est.£20-£40



- 568 A Toshiba Stereo Receiver.
Est.£10-£20



- 576 A group of various ceramics including large jug, suitcase, dressing table sets, jewellery box etc.
Est.£20-£40



- 569 A miscellaneous group including Royal Worcester egg coddler, silver plated tray, necklace, Christening set, Czechoslovakian lady etc.
Est.£20-£30



- 577 A group of various brassware.
Est.£10-£20



- 570 A group of miscellaneous items including a boxed Wedgwood commemorative plate, treen cutlery tray, bowl, wall hanging, linen, place mats etc
Est.£10-£20



- 578 A copper coal scuttle with horse brasses, spoon, turtle etc.
Est.£10-£20



- 579 A group of brassware including weights, jam pan, horse and cart, copper pan, parafin lamp base etc.
Est.£20-£40



- 580 A WWI helmet and WWII medal.
Est.£20-£30



- 581 A Christmas card printed signature by Adolf Hitler.
Est.£20-£40



- 582 A gas mask in a canvas case.
Est.£10-£20



- 583 A 1915 Princess Mary Christmas card, a 1914/18 War Souvenir Bleriot Coach lamp; C Finch Senior, a group of coins and a quantity of vintage postcards in an album; containing one by Donald McGill.
Est.£20-£40



- 584 A group of door fittings, including door plaques, door knobs, escutcheons etc.
Est.£20-£40



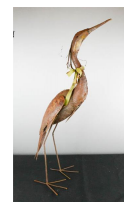
- 585 A cast iron door knocker in the form of a ladies hand, 13cm high.
Est.£20-£30



- 586 A set of Salter scales and weights.
Est.£20-£30



- 587 An iron garden crane, 66cm high.
Est.£20-£40



- 588 A cream painted lantern.
Est.£10-£20



- 589 A quantity of treen and brass collectables.
Est.£10-£20



- 590 A brass French style book stand.
Est.£20-£30



- 591 Railway cast iron plaque: Darlington E87667, 12T, 1959, Lot No. 30344.
Est.£30-£50



- 592 An antique cart wheel.
Est.£20-£30



- 593 An antique cart wheel, and a small iron wheel.
Est.£20-£40



- 594 A group of enamel plaques, some advertising.



- 595 A brass 'Letters' letter box.
Est.£20-£30



- 603 Railway: cast iron sign SW.
Est.£20-£40



- 596 A model of a knight.
Est.£10-£20



- 604 Greaves Road sign.
Est.£20-£40



- 597 A brass Indonesian figure.
Est.£20-£30



- 605 Two brass trays and a brass framed mirror.
Est.£20-£40



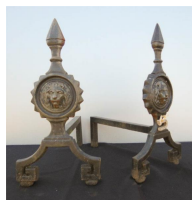
- 598 A cast iron door knocker in the form of a mermaid.
Est.£20-£30



- 606 A group of saws and a pair of clippers.
Est.£10-£20



- 599 A pair of andirons.
Est.£10-£20



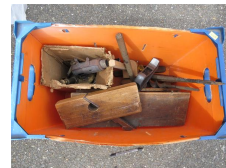
- 607 A group of tools, hoe, fork, spade etc.
Est.£10-£20



- 600 A garden armillary sphere, and iron bunches of keys.
Est.£20-£30



- 608 A group of tools, files, rasps etc.
Est.£10-£20



- 601 A cast iron fire basket, painted red, together with fire front.
Est.£50-£80



- 609 A group of items to include soda stream, spirit level, socket set etc.
Est.£10-£20



- 602 Stenson Street road sign, cast iron.
Est.£20-£40



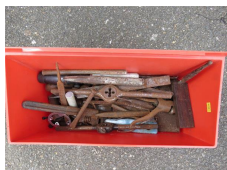
- 610 A grey tool box containing spanner, screwdrivers, hammer etc.
Est.£10-£20



- 611 An ammunition box containing chisels etc.
Est.£10-£20



- 612 A red box containing tools; chisels, planes, etc.
Est.£10-£20



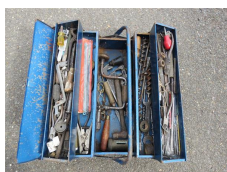
- 613 Two boxes containing tools; chisels, tapes, pliers, axe, ruler etc.
Est.£10-£20



- 614 A box of tools, saws, plastering tools, sharpening stone etc.
Est.£10-£20



- 615 A blue metal tool box with hammers, drill bits, spanners etc.
Est.£10-£20



- 616 A pine slim cupboard, with blue glass handles.
Est.£20-£30



- 617 A long footstool with drop in seat.
Est.£10-£20



- 618 A small oak bow front corner cupboard.
Est.£20-£40



- 619 An antique pine blanket chest with iron handles, 43 by 88 by 48cm.
Est.£30-£50



- 620 A pair of white M&S bedside tables.
Est.£20-£30



- 621 A stained pine blanket chest, with a carved front.
Est.£50-£80



- 622 A small coffee table with scallop carved cabriole legs.
Est.£30-£50



- 623 A 19th century Gentleman's dressing chest with fold out top, and single door enclosing interior shelves.
Est.£80-£120



- 624 An Edwardian dropleaf table together with a marquetry mahogany single bedroom chair.
Est.£10-£20



- 625 A set of four balloon back French style armchairs.
Est.£40-£60



- 626 A Lloyd loom style ottoman.
Est.£10-£20



- 628 Alun Biggs, Sheffield, 1980, oak tambour fronted desk of small proportions, with pigeon hole interior, green leather skivver, and two drawers. 94 by 76 by 52cm. Est.£80-£120



- 629 A pine wine rack. Est.£20-£40



- 630 A group of four Edwardian bedroom chairs. Est.£10-£20



- 631 A set of wall shelves, with graduated shaped sides. Est.£10-£20



- 632 An antique dome top travelling trunk / chest, 60cm high. Est.£40-£60



- 633 A tall stool. Est.£10-£20



- 634 Alun Biggs of Sheffield oak tripod table. Est.£20-£40



- 635 A mahogany box strung D-table. Est.£20-£40



- 636 A white low cupboard containing baskets. Est.£20-£40



- 637 An MDF side table. Est.£20-£30



- 638 A mahogany canterbury, with turned spindles and single drawer. Est.£30-£50



- 639 A 1930s child's chair with spindled back. Est.£20-£50



- 640 A modern glass and chrome set of shelves. Est.£20-£30



- 641 A Syrian triangular top occasional table, inlaid with mother of pearl and carved with decoration. Est.£30-£50



- 642 A Chinese white lacquered desk with mother of pearl figures and gilded highlights, the curved raised back composed of various sized drawers. Est.£40-£60



- 643 A mirrored console table. Est.£40-£60



- 644 A modern chrome and black velvet bar stool.
Est.£20-£30



- 645 A pair of Chinese white lacquered cabinets with mother of pearl figures and gilded highlights.
Est.£60-£90



- 646 A French style double bed, upholstered head and foot boards.
Est.£40-£60



- 647 A white M&S wardrobe with two drawers.
Est.£40-£60



- 648 A white M&S chest of drawers.
Est.£30-£50



- 649 An iron clad chest.
Est.£40-£60



- 650 A small oak carved cupboard.
Est.£10-£20



- 651 A circular top oak sewing table.
Est.£10-£20



- 652 A 19th century oak tripod table.
Est.£30-£40



- 653 A small Fortnum & Mason wicker basket.



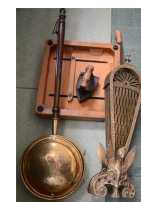
- 654 A pine chest of drawers with blue glass handles; two over five long drawers.
Est.£40-£60



- 655 A bow front chest of drawers; three small over four long graduated drawers.
Est.£50-£80



- 656 A quantity of brassware including a fan fireguard, bed pan, antique iron etc.



- 657 A small mahogany chest of drawers.
Est.£10-£20



- 658 A Frister & Rossman sewing machine,
Est.£20-£30



- 658A A Singer sewing machine cast iron base.
Est.£10-£20

- 659 A mahogany shaped top glass display cabinet.
Est.£30-£40



- 660 A set of antique steps.
Est.£30-£40



- 661 A mahogany side table.
Est.£10-£20



- 662 A pine chest of drawers with blue glass handles.
Est.£20-£40



- 663 Alun Biggs, Sheffield, oak longcase clock, with brass dial.
Est.£70-£100



- 664 An antique pine chest of drawers with brass cup handles.
Est.£50-£80

