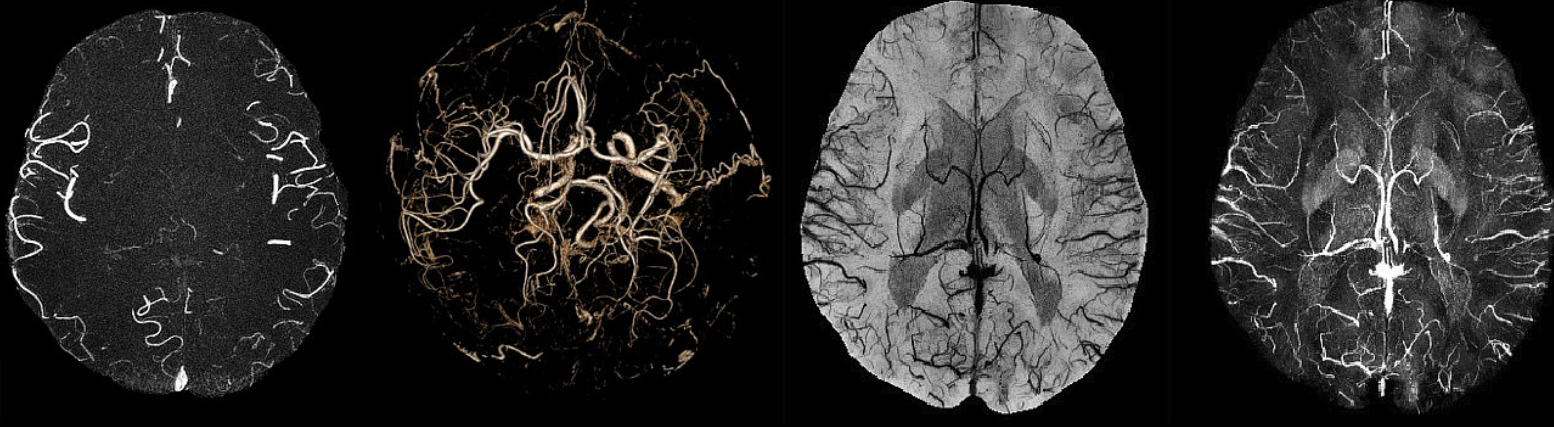


Magnetic Resonance Innovations

"Your partner in brain image analysis"



Data Processing & Technical Reporting Services

MR Innovations provides post-processing & data analysis for different MR sequences, including:

Susceptibility Weighted Imaging (SWI) & Quantitative Susceptibility Mapping (SWIM):

- *Cerebral Microbleed Detection
- *Medullary Vein Damage and Thrombus
- *Venous Oxygen Saturation
- *Gray Matter Iron Content
- *Venography Projections

Phase Contrast Flow Quantification (PCFQ-MRI):

- *Arterial, Venous, and Cerebrospinal Fluid Flow
- *Normalized Cerebral Blood Flow
- *Flow and Velocity Profiles through the Cardiac Cycle

Perfusion Weighted Imaging (PWI) / Arterial Spin Labeling (ASL):

- *Cerebral Blood Flow / Blood Volume (CBF & CBV)
- *Mean Transit Time (MTT)
- *Lesion Comparison to normal appearing White / Gray Matter

Diffusion Tensor Imaging (DTI):

- *Fractional Anisotropy (FA)
- *White Matter Fiber Tracking / Tractography
- *FA Assessment of Key White Matter Structures

Conventional Magnetic Resonance Imaging:

- *Brain Volume
- *Brain Segmentation
- *Lesion Identification
- *T1WI, T2WI, PD, T2 FLAIR, DWI

Functional Magnetic Resonance Imaging (fMRI):

- *Resting State fMRI
- *Task/Stimulus Based fMRI

Vascular Imaging:

- *2D/3D Time of Flight
- *3D Contrast Enhanced MRA/MRV
- *3D Rotatable Projections
- *Vessel tracking

EXPEDITED SHORT REPORT (ESR)

We provide a 24 hour turn-around for the expedited short report (ESR) which summarizes essential quantitative measurements and structural assessments.

FULL TECHNICAL REPORT (FTR)

Our full technical reports have a one week turn-around time and include a complete quantitative analysis of our comprehensive protocols, as well as a two page summary. We are constantly data mining these images and looking for important biomarkers for these neurological diseases.

PUBLISHING

Work with us and we will help you publish your research.