

### What file formats are accepted?

Please send high resolution PDF's

### Must fonts be exported / converted to curves?

Yes, alternatively please send font files

### What size should my page be?

Page size should be set to final trim size

### How small can my text be?

Ideally 4pt text is the smallest (in order to be clearly legible)

### Can I use images from my camera?

Yes, however cameras record images as RGB, the images will need to be converted to CMYK before embedding.

### Can I see a sample before the production run?

Yes, please let us know and we will gladly run a sample for you

### Do I need to add crop marks?

No, unless the labels are required to be cut out individually. The cut line is all we need.

### The colour that I see on my PC screen, is that the colour it will print?

No, unless your screen has been professionally calibrated the colours on your screen will differ to the colours printed.

The above guidelines are a suggestion only and can be altered or re-looked at on a per job basis.

**For any questions or assistance please contact us.**

### Checklist

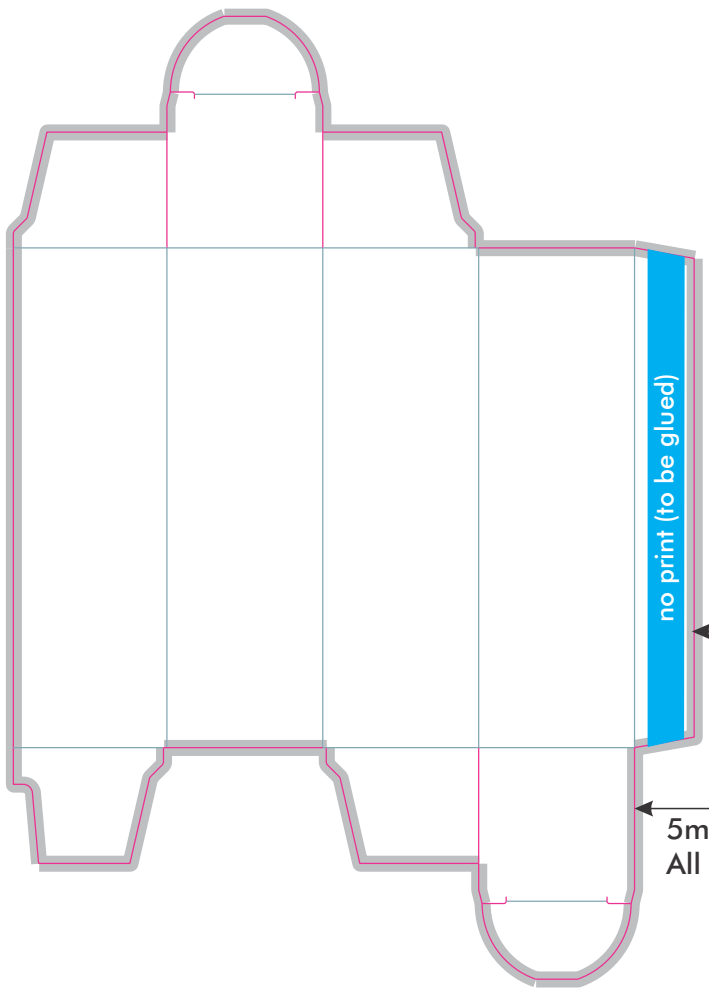
- My label has a 3mm bleed all around
- My text and images are at least 2mm away from the cut line
- My cut line is set to the following colour: 100% Magenta
- All my text is legible and greater than 4pt size
- All images are 300dpi or greater
- All colours are CMYK (RGB, LAB, PANTONE colours will be converted)

### NOTE

All colours / images that are converted to CMYK may change colour slightly. Please take advantage of our printed colour proofs to ensure colour accuracy

### Checklist

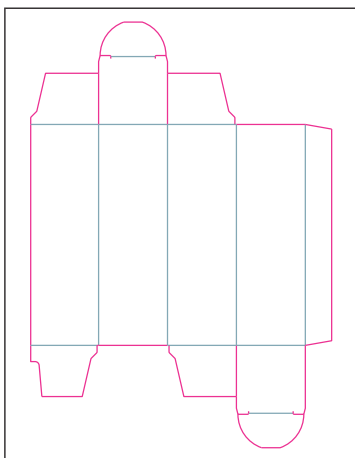
- Artwork has 5mm bleed all around
- Text is 2mm away from cut line
- Cut & Crease Line are spot colours
- Images are 300dpi or greater
- All text is legible and greater than 4pt size
- All colours are either CMYK or Spot
- Artwork is flattened
- All text is converted to curves



2mm "Gutter"  
 The space between the text/ image and the cut lines. Too close to the cut line and it may be cut off.

5mm Bleed  
 All around

### Page Layout



Page 1:  
Trace Only



Page 2:  
Trace & Artwork



Page 3:  
Artwork Only



Page 4:  
(Optional)  
 Any finishing such as embossing, foil, Spot UV etc.

For any questions or assistance please contact us.