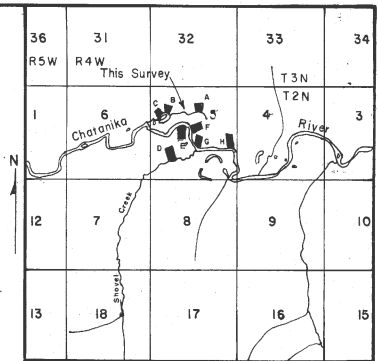


# Prot. Sec. 5, TRACT A, T. 2N., R. 4W., F.M., ALASKA

## BASIS OF COORDINATES

Section Corner (B. L. M. Record)  
Lat. = 65° 02' 13.592"  
Long. = 148° 23' 17.106"  
X = 749,102.28'  
Y = 4,036,834.08'



U.S.G.S. Quad. Livengood (A-3) Scale 1"=1 Mile

## VICINITY MAP

## BEARING TREE DATA

### TRACT B

WC1	BT1	7" Spruce	N 26° 28' E	29.0'
	BT2	13" Spruce	S 44° 08' E	9.0'
	BT3	14" Spruce	N 74° 58' W	11.5'
Cor. 2	BT1	7" Spruce	N 42° 13' W	5.7'
	BT2	10" Spruce	S 50° 52' E	6.8'
	BT3	8" Spruce	S 47° 28' W	30.5'
Cor. 3	BT1	11" Spruce	N 03° 10' E	25.0'
	BT2	19" Spruce	S 68° 30' E	19.7'
	BT3	14" Spruce	S 21° 44' W	20.4'
WC4	BT1	10" Spruce	N 03° 33' W	8.5'
	BT2	9" Spruce	S 46° 06' E	25.9'
	BT3	8" Spruce	N 63° 23' W	54.2'

### TRACT C

WC1	BT1	10" Spruce	N 15° 17' W	32.3'
	BT2	8" Spruce	N 31° 24' E	67.4'
	BT3	8" Spruce	N 61° 29' W	49.4'
Cor. 2	BT1	10" Spruce	N 17° 12' W	16.6'
	BT2	8" Spruce	N 84° 43' E	15.0'
	BT3	8" Spruce	S 40° 32' W	23.4'
Cor. 3	BT1	11" Spruce	N 34° 32' W	6.1'
	BT2	10" Spruce	S 69° 14' E	19.0'
	BT3	11" Spruce	S 28° 07' W	19.6'
WC4	BT1	13" Spruce	N 15° 36' W	21.9'
	BT2	22" Spruce	N 45° 10' E	24.6'
	BT3	19" Spruce	N 86° 40' W	12.8'

## SELECTION INFORMATION

General Selection - 432  
Tentative Approval dated 9/13/63

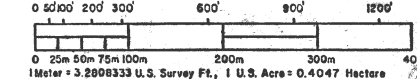
## LEGEND

EXISTING BRASS CAPPED MONUMENT

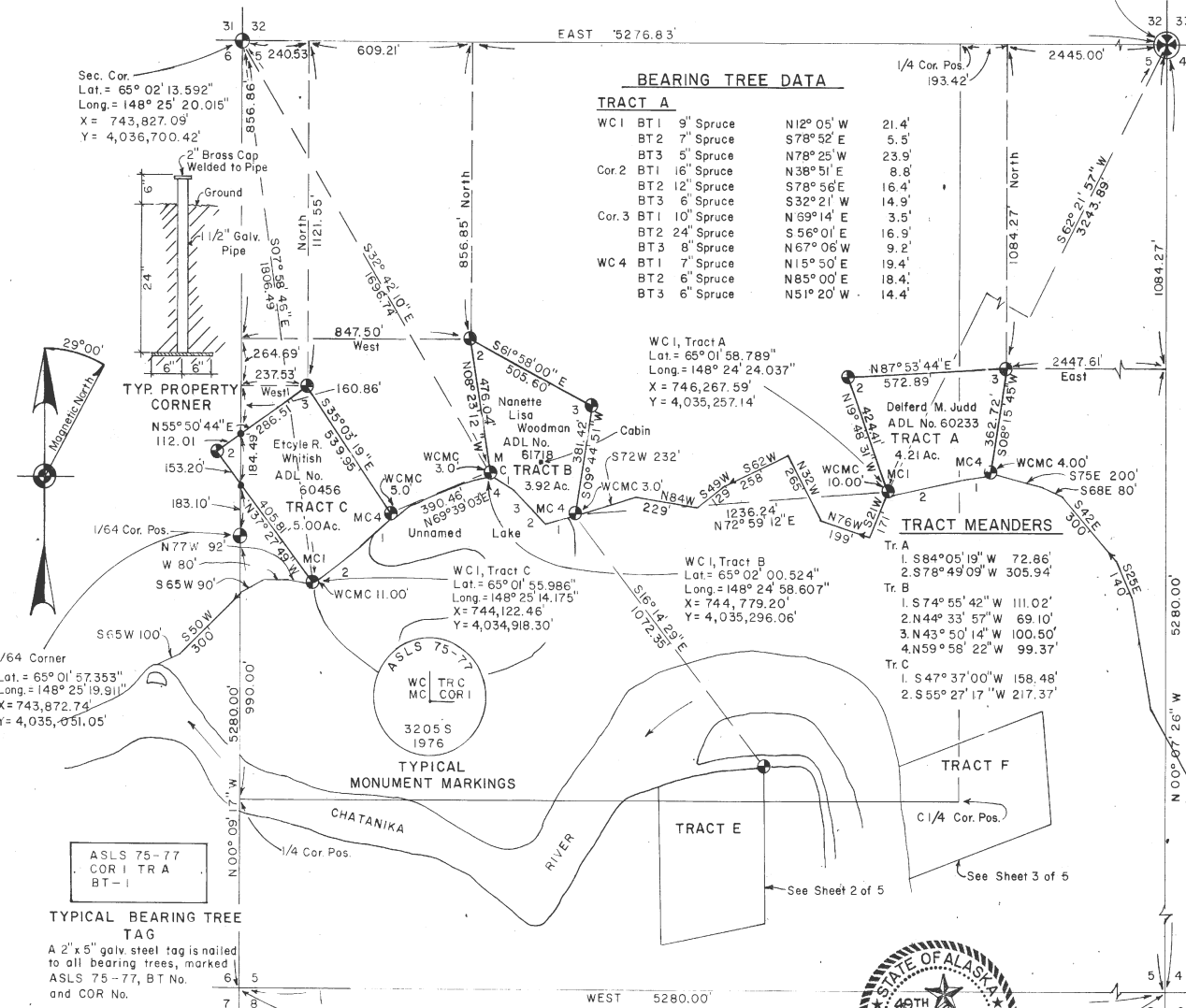
PRIMARY MONUMENTS SET THIS SURVEY.

REBAR WITH CAP (5/8" X 30") SET THIS SURVEY.

MONUMENT RECOVERED THIS SURVEY.



DATE OF SURVEY Beginning: August 17, 1976 Ending: November 8, 1977	NAME OF SURVEYOR Thomas N. Scarborough 3205-S
STATE OF ALASKA DEPARTMENT OF NATURAL RESOURCES DIVISION OF LANDS ANCHORAGE, ALASKA	
ALASKA STATE LAND SURVEY No. 75-77 within protracted Sec. 5, Tr. A, T2N, R4W, F.M.	
DRAWN BY: T.N.S. - 1-20-77	APPROVAL RECOMMENDED For Chief Cadastral Engineer
DATE APPROVED: 9-7-79	APPROVED: For the Director of Lands
SCALE: 1" = 300'	CHECKED FILE NO. 75-77



Sec. Cor.  
Lat. = 65° 02' 13.592"  
Long. = 148° 25' 20.015"  
X = 743,827.09'  
Y = 4,036,700.42'

## TYP. PROPERTY CORNER

N55° 50' 44" E  
112.01'

153.20'

183.10'

177° W 92'

W 80'

S 65° W 90'

S 65° W 100'

S 65° W 300'

1/64 Cor. Pos.

1/64 Cor. Pos.

1/64 Cor. Pos.

1/64 Cor. Pos.

1/64 Cor. Pos.

1/64 Cor. Pos.

1/64 Cor. Pos.

1/64 Cor. Pos.

1/64 Cor. Pos.

1/64 Cor. Pos.

1/64 Cor. Pos.

1/64 Cor. Pos.

1/64 Cor. Pos.

1/64 Cor. Pos.

1/64 Cor. Pos.

1/64 Cor. Pos.

1/64 Cor. Pos.

1/64 Cor. Pos.

1/64 Cor. Pos.

1/64 Cor. Pos.

1/64 Cor. Pos.

1/64 Cor. Pos.

1/64 Cor. Pos.

1/64 Cor. Pos.

1/64 Cor. Pos.

1/64 Cor. Pos.

1/64 Cor. Pos.

1/64 Cor. Pos.

1/64 Cor. Pos.

1/64 Cor. Pos.

1/64 Cor. Pos.

1/64 Cor. Pos.

1/64 Cor. Pos.

1/64 Cor. Pos.

1/64 Cor. Pos.

1/64 Cor. Pos.

1/64 Cor. Pos.

1/64 Cor. Pos.

1/64 Cor. Pos.

1/64 Cor. Pos.

1/64 Cor. Pos.

1/64 Cor. Pos.

1/64 Cor. Pos.

1/64 Cor. Pos.

1/64 Cor. Pos.

1/64 Cor. Pos.

1/64 Cor. Pos.

1/64 Cor. Pos.

1/64 Cor. Pos.

1/64 Cor. Pos.

1/64 Cor. Pos.

1/64 Cor. Pos.

1/64 Cor. Pos.

1/64 Cor. Pos.

1/64 Cor. Pos.

1/64 Cor. Pos.

1/64 Cor. Pos.

1/64 Cor. Pos.

1/64 Cor. Pos.

1/64 Cor. Pos.

1/64 Cor. Pos.

1/64 Cor. Pos.

1/64 Cor. Pos.

1/64 Cor. Pos.

1/64 Cor. Pos.

1/64 Cor. Pos.

1/64 Cor. Pos.

1/64 Cor. Pos.

1/64 Cor. Pos.

1/64 Cor. Pos.

1/64 Cor. Pos.

1/64 Cor. Pos.

1/64 Cor. Pos.

1/64 Cor. Pos.

1/64 Cor. Pos.

1/64 Cor. Pos.

1/64 Cor. Pos.

1/64 Cor. Pos.

1/64 Cor. Pos.

1/64 Cor. Pos.

1/64 Cor. Pos.

1/64 Cor. Pos.

1/64 Cor. Pos.

1/64 Cor. Pos.

1/64 Cor. Pos.

1/64 Cor. Pos.

1/64 Cor. Pos.

1/64 Cor. Pos.

1/64 Cor. Pos.

1/64 Cor. Pos.

1/64 Cor. Pos.

1/64 Cor. Pos.

1/64 Cor. Pos.

1/64 Cor. Pos.

1/64 Cor. Pos.

1/64 Cor. Pos.

1/64 Cor. Pos.

1/64 Cor. Pos.

1/64 Cor. Pos.

1/64 Cor. Pos.

1/64 Cor. Pos.

1/64 Cor. Pos.

1/64 Cor. Pos.

1/64 Cor. Pos.

1/64 Cor. Pos.

1/64 Cor. Pos.

1/64 Cor. Pos.

1/64 Cor. Pos.

1/64 Cor. Pos.

1/64 Cor. Pos.

1/64 Cor. Pos.

1/64 Cor. Pos.

1/64 Cor. Pos.

1/64 Cor. Pos.

1/64 Cor. Pos.

1/64 Cor. Pos.

1/64 Cor. Pos.

1/64 Cor. Pos.

1/64 Cor. Pos.

1/64 Cor. Pos.

1/64 Cor. Pos.

1/64 Cor. Pos.

1/64 Cor. Pos.

1/64 Cor. Pos.

1/64 Cor. Pos.

1/64 Cor. Pos.

1/64 Cor. Pos.

1/64 Cor. Pos.

1/64 Cor. Pos.

1/64 Cor. Pos.

1/64 Cor. Pos.

1/64 Cor. Pos.

1/64 Cor. Pos.

1/64 Cor. Pos.

1/64 Cor. Pos.

1/64 Cor. Pos.

1/64 Cor. Pos.

1/64 Cor. Pos.

1/64 Cor. Pos.

1/64 Cor. Pos.

1/64 Cor. Pos.

1/64 Cor. Pos.

1/64 Cor. Pos.

1/64 Cor. Pos.

1/64 Cor. Pos.

1/64 Cor. Pos.

1/64 Cor. Pos.

1/64 Cor. Pos.

1/64 Cor. Pos.

1/64 Cor. Pos.

1/64 Cor. Pos.

1/64 Cor. Pos.

1/64 Cor. Pos.

1/64 Cor. Pos.

1/64 Cor. Pos.

1/64 Cor. Pos.

1/64 Cor. Pos.

1/64 Cor. Pos.

1/64 Cor. Pos.

1/64 Cor. Pos.

1/64 Cor. Pos.

1/64 Cor. Pos.

1/64 Cor. Pos.

1/64 Cor. Pos.

1/64 Cor. Pos.

1/64 Cor. Pos.

1/64 Cor. Pos.

1/64 Cor. Pos.

1/64 Cor. Pos.

1/64 Cor. Pos.

1/64 Cor. Pos.

1/64 Cor. Pos.

1/64 Cor. Pos.

1/64 Cor. Pos.

1/64 Cor. Pos.

1/64 Cor. Pos.

1/64 Cor. Pos.

1/64 Cor. Pos.

1/64 Cor. Pos.

1/64 Cor. Pos.

1/64 Cor. Pos.

1/64 Cor. Pos.

1/64 Cor. Pos.

1/64 Cor. Pos.

1/64 Cor. Pos.

1/64 Cor. Pos.

1/64 Cor. Pos.

1/64 Cor. Pos.

1/64 Cor. Pos.

1/64 Cor. Pos.

1/64 Cor. Pos.

1/64 Cor. Pos.

1/64 Cor. Pos.

1/64 Cor. Pos.

1/64 Cor. Pos.

1/64 Cor. Pos.

1/64 Cor. Pos.

1/64 Cor. Pos.

1/64 Cor. Pos.

1/64 Cor. Pos.

1/64 Cor. Pos.

1/64 Cor. Pos.

1/64 Cor. Pos.

1/64 Cor. Pos.

1/64 Cor. Pos.

1/64 Cor. Pos.

1/64 Cor. Pos.

1/64 Cor. Pos.

1/64 Cor. Pos.

1/64 Cor. Pos.

1/64 Cor. Pos.

1/64 Cor. Pos.

1/64 Cor. Pos.

1/64 Cor. Pos.

1/64 Cor. Pos.

1/64 Cor. Pos.

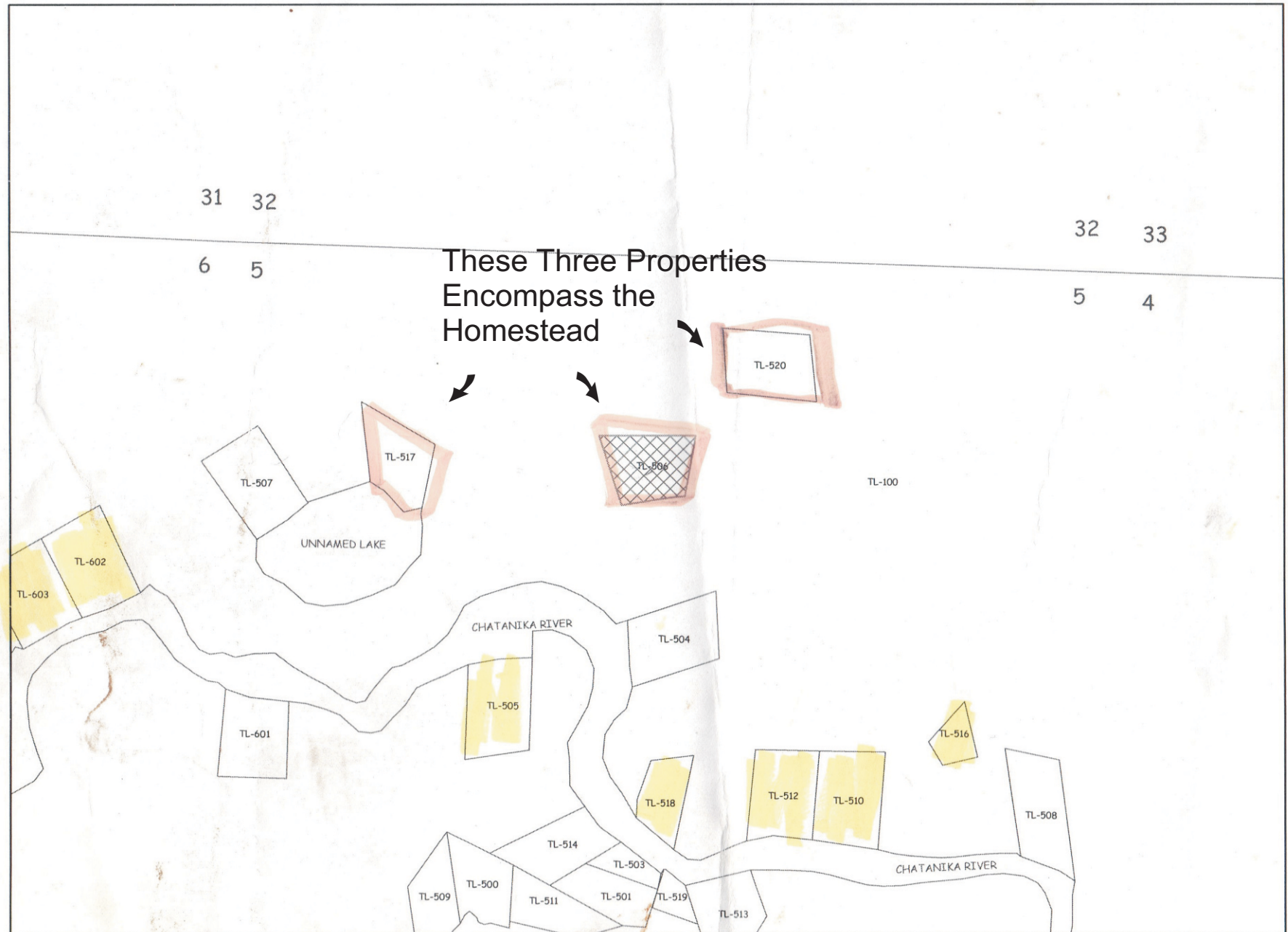
1/64 Cor. Pos.

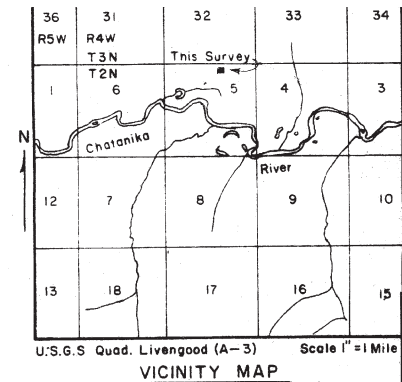
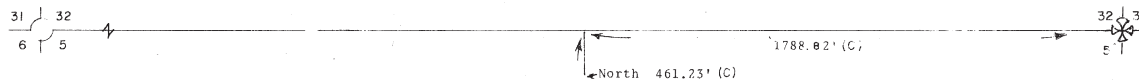
1/64 Cor. Pos.

1/64 Cor. Pos.

1/64 Cor. Pos.

TL-520, TL506, TL517





# **CERTIFICATE OF OWNERSHIP AND DEDICATION**

I, the undersigned, hereby certify that I am the Director, Division of Technical Services, and that the State of Alaska is owner of ASLS 81-192 as shown hereon. I hereby approve this survey and plat for the State of Alaska, and dedicate for public or private use as noted, all easements, public utility areas, and rights-of-way as shown and described hereon.

DATE: 10-26-83  
James R. Anderson  
DIRECTOR,  
DIVISION OF TECHNICAL SERVICES

# **NOTARY'S ACKNOWLEDGEMENT**

Subscribed and Sworn before me  
THIS 26th DAY OF October, 1983

For James R. Anderson  
Notary for the State of Alaska

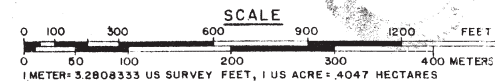
MY COMMISSION EXPIRES 12-10-84

# **LESSEE CERTIFICATE**

I, the undersigned hereby certify that I am the Lessee as shown hereon. I hereby approve this survey and plat.  
ADL NO. 61425  
Koy N. Mitchell Date

NOTARY'S ACKNOWLEDGEMENT  
Subscribed and Sworn before me this 5 Day of August, 1983

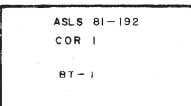
NOTARY FOR  
My Commission Expires: 10-21-1987



**OFFICE COPY**

# **BEARING TREE DATA**

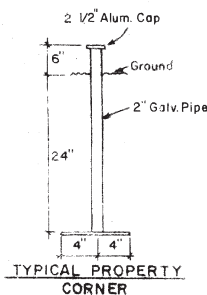
Cor. 1	B.T. 1	5"	Spruce	N 48° 33' E	6.4'
	B.T. 2	7"	Birch	S 70° 05' E	16.0'
	B.T. 3	9"	Poplar	S 09° 54' W	8.5'
Cor. 2	B.T. 1	21"	Spruce	N 18° 37' E	9.2'
	B.T. 2	7"	Birch	S 18° 02' W	20.8'
	B.T. 3	9"	Birch	N 50° 48' W	15.4'
Cor. 3	B.T. 1	15"	Spruce	N 61° 52' E	18.2'
	B.T. 2	9"	Spruce	S 52° 27' E	14.3'
	B.T. 3	6"	Spruce	N 33° 15' W	27.0'
Cor. 4	B.T. 1	5"	Spruce	N 21° 00' E	15.3'
	B.T. 2	16"	Spruce	S 69° 47' E	8.7'
	B.T. 3	8"	Birch	N 63° 22' W	8.3'



**TYPICAL BEARING TREE TAG**  
2" X 5"

# **BASIS OF COORDINATES**

Cor. 3, Tract A  
ASLS 75-77 (ADL Comp.)  
Lat. = 65° 02' 02.926"  
Long. = 148° 24' 14.054"  
(NAD 1927)



**TYPICAL PROPERTY CORNER**

# **TYPICAL MONUMENT MARKINGS**



83-234  
RECORDED - FILED NC  
FBKS. REC. DIST.  
DATE 11-2-83  
TIME 1:00 P.M.  
Requested by  
Address AS/DNR/DTS  
Curt Nelson

# **LEGEND**

- BLM MONUMENT NOT RECOVERED
- PRIMARY MONUMENTS SET THIS SURVEY
- APPROVED MONUMENT RECOVERED
- MONUMENT OF RECORD, NOT RECOVERED
- UNSURVEYED
- SURVEYED
- (C) COMPUTED
- (REC.) RECORD

# **NOTES**

- ALL BEARINGS SHOWN ARE TRUE BEARINGS AS ORIENTED TO THE BASIS OF BEARING, AND DISTANCES SHOWN ARE REDUCED TO HORIZONTAL SEA LEVEL DISTANCES.
- THE CLAIMANT'S CORNERS WERE RECOVERED AND USED TO CONTROL THE LOCATION OF THE TRACT BOUNDARIES.
- THIS SURVEY WAS ACCOMPLISHED IN ACCORDANCE WITH OTE-SI 81-89, AND AS 38.08.077.
- THE MINIMUM BEARING AND DISTANCE LINEAR CLOSURE OF THE EXTERIOR BOUNDARY OF EACH SITE IS WITHIN THE ACCURACY OF ONE PART IN FIVE THOUSAND AS FIELD MONUMENTED.
- EACH SITE IS ORIENTATED TO THE RECTANGULAR SURVEY NET WITHIN A MINIMUM ACCURACY OF ONE PART IN TWO THOUSAND.
- ALL PARCELS ON LANDS OWNED BY THE STATE OF ALASKA, LOCATED WITHIN 50.00 FEET OF, OR BISECTED BY A SURVEYED SECTION LINE, ARE SUBJECT TO A 60 FOOT EASEMENT, EACH SIDE OF THE SECTION LINE, WHICH IS RESERVED TO THE STATE OF ALASKA FOR PUBLIC HIGHWAYS UNDER A.S. 91.01.010.

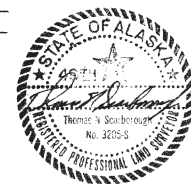
# **SURVEYOR'S CERTIFICATE**

I HEREBY CERTIFY THAT I AM PROPERLY REGISTERED AND LICENSED TO PRACTICE LAND SURVEYING IN THE STATE OF ALASKA, THAT THIS PLAT REPRESENTS A SURVEY MADE BY ME OR UNDER MY DIRECT SUPERVISION, THAT THE MONUMENTS SHOWN HEREON ACTUALLY EXIST AS DESCRIBED, AND THAT ALL DIMENSIONS AND OTHER DETAILS ARE CORRECT.

DATE 9-24-87 REGISTRATION No. 32055  
Thomas N. Scarborough  
REGISTERED LAND SURVEYOR

# **SELECTION INFORMATION**

General Selection 432  
Tentative Approval dated 9-3-63



DATE OF SURVEY: Beginning 4-13-83 4-14-83		NAME OF SURVEYOR Thomas N. Scarborough 32055	
STATE OF ALASKA DEPARTMENT OF NATURAL RESOURCES DIVISION OF TECHNICAL SERVICES ANCHORAGE, ALASKA			
ALASKA STATE LAND SURVEY No. 81-192 WITHIN UNSURVEYED SEC. 5, TRACT A, T.2N., R.4W., F.M., ALASKA			
DRAWN BY TNS DATE 6-2-83 SCALE 1" = 300'	APPROVAL RECOMMENDED Chief Cadastral Surveyor DATE 10/15/83 FILE NO. 81-192		