

# SMART LED CATALOG

---

2017-18 LED PRODUCT CATALOG



# INDEX

---

- [AI9 Bulbs](#)
  - [BR Bulbs](#)
  - [PAR Bulbs](#)
  - [MR 16 Bulbs](#)
  - [Candelabra Series](#)
  - [LED Modules](#)
  - [LED Strips](#)
  - [LED Up-Down Light](#)
  - [LED Wall Washer](#)
  - [LED NEON Flex](#)
  - [Flood & Pole Lights](#)
  - [High Bays](#)
  - [Canopy Lights](#)
  - [Can & Ceiling Fixtures](#)
  - [Tubelights & Linear Lamps](#)
  - [Refrigerator Fixtures](#)
  - [Corn Lamps](#)
  - [Panel Lights](#)
  - [Solar Lights|Novelty Lights](#)
  - [Wall Packs](#)
- 

# A19 BULBS

**LED A  
SERIES**

**SES-A19**  
6W | 9W  
**SES-A21**  
15W



**Technical Specifications**

Watts:	6W   9W   15W
Size:	See Reverse
Lumen Output:	470lm   806lm   1600lm
CCT:	Warm White   3000K Cool White   5000K
Voltage:	120V
Beam Angle:	240°
Certifications:	UL   ES   FCC
Base:	E26



- This revolutionary product adopts the latest technology, replacing traditional bulbs with energy-efficient LEDs.
- These bulbs are suitable for broad applications and will reduce energy bills to provide significant energy savings.
- Lifespan: 25,000 hours

# BR BULBS

**SES-BR30**  
9W  
**SES-BR40**  
40W



**Technical Specifications**

Watts:	9W   15W
Size:	Ø3.74"X5.16" Ø5"X6.38"
Lumen Output:	650lm   1200lm
CCT:	Warm White   3000K Natural White   4000K Cool White   5000K
Voltage:	120V
Beam Angle:	40°
Certifications:	UL   ES   FCC
Base:	E26



- This product series adopts high quality LEDs to directly replace traditional lighting.
- The BR Lamp series is suitable for broad applications, and will provide significant energy savings.
- Lifespan: 35,000 hours

# PAR BULBS

**SES-PAR**  
7W | 15W | 18W



**Technical Specifications**

Watts:	7W   15W   18W
Size:	See Reverse
Lumen Output:	550lm   806lm   1460lm
CCT:	Cool White   5000K - 6500K
Voltage:	120V
Beam Angle:	40°
Certifications:	UL   FCC
Base:	E26   E27



- These lamps provide a perfect LED solution to halogen lamps for both commercial and residential applications with large energy savings
- Suitable for commercial applications, such as grocery stores, building lighting and much more.
- Lifespan: 35,000 hours

# MR 16 BULBS

**SES-GU10**  
7W



**Technical Specifications**

Watts:	7W
Lumen Output:	550lm
Size:	1.97"x2.13"
Lumen Output:	450lm
CCT:	Cool White   6500K
Voltage:	AC120V
Beam Angle:	40°
Certifications:	FCC   UL
Base:	GU10



- The MR16 is manufactured with high quality LED chips, these fixtures provide a high color rendition index (CRI) to illuminate vibrant colors in their true nature.
- Lifespan: 25,000 hours

# CANDELABRA SERIES

**SES-CLB**  
4W





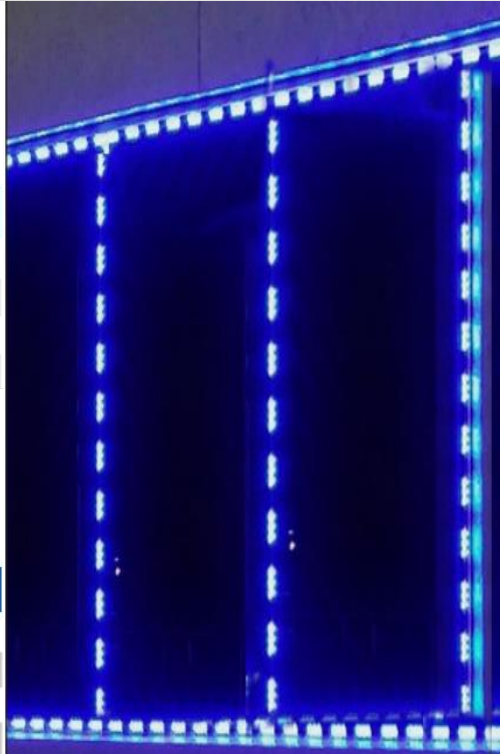
Technical Specifications	
Watts:	4W
Size:	Ø1.42"x5.31"
Lumen Output:	300lm
CCT:	Warm White   3000K Cool White   6500K
Voltage:	AC100-277V   50-60Hz
Beam Angle:	360°
Certifications:	UL   ES   FCC
Base:	E12   E14   E17



- This product adopts the latest LED technology with high lumen efficiency.
- The elegant looks provide perfect aesthetics to chandeliers and other accent fixtures.
- Lifespan: 25,000 hours

# MODULES – WHITE AND RGB

<b>SES-LM-WH-3</b>	
1.44W	
	
<b>Technical Specifications</b>	
Watts:	1.44W
Lumen Output:	120lm
CCT:	3000-6500K
Voltage:	DC12V
<b>SES-LM-RGB-3</b>	
.72W	
	
<b>Technical Specifications</b>	
Watts:	.72W
Lumen Output:	67lm
CCT:	RGB
Voltage:	DC12V



- These lights are perfect for illuminating signs, or outlining windows.
- These LED Modules are perfect for gas stations, grocery stores and more!
- Have a life span of 25,000 hours



# LED STRIPS



Wattage: 14.4 Watts / Meter  
Voltage: DC 12V  
Color: RGB  
Length: 16 Feet (5 Meters)

---

Wattage: 9.6 Watts / Meter  
Voltage: DC 12V  
Color: White, Red, Green, or Blue  
Length: 16 Feet (5 Meters)



- These lights are perfect for illuminating signs, or outlining windows.
- These LED Strips are perfect for gas stations, grocery stores and more!

# LED UP-DOWN LIGHT

**SES-OWM**  
12W | 24W  
RGB - 12 | RGB - 24



Technical Specifications	
Watts:	12W   24W   RGB-12   RGB-24
Size:	See Reverse
CCT:	Cool White   6000K RED GREEN BLUE
Beam Angle:	15°
Voltage:	AC100-240V   100-277V, 50/60Hz
Qualifications:	CE   RoHS
CRI:	≥80Ra
PF:	0.9
IP Rate:	IP65
Lifespan:	50,000 hours



- We are excited to offer this light to enhance the appearance of your buildings
- Each of these models provide excellent light distribution and can add a POP of color to your business.
- Have a long-lifespan of 50,000 hours

# LED WALL WASHER

**SES-DR-TG-050**  
18W | 36W



**Technical Specifications**

Watts:	18W   36W
Size:	See Reverse
CCT:	RGB Warm White   3000K Natural White   4000K Cool White   5000K
Voltage:	AC100-240V
Beam Angle:	150°
IP Rate:	IP65
Lifespan:	25,000 hours



- This light is perfect for adding pops of color around your building or structure.
- This light can be used in broad applications including hotels, office buildings, and more!

# LED NEON FLEX

**SES-SMD2835**  
7W | 9W



**Technical Specifications**

Watts:	7W   9W
Size:	.39"X.79" .59"X1.02"
Lumen Output:	370lm
CCT:	RGB
Voltage:	12V   24V   110V
Beam Angle:	90°
Certifications:	UL
IP Rate:	IP66
Lifespan:	50,000 hours



- This light works directly with 120 Volt connections eliminating need for drivers.
- This decorative lights provides an perfect accent to outdoor and indoor contours of the building highlighting the aesthetics and providing high visibility.

# LED FLOOD LIGHT

**SES-FLT**  
30W | 50W | 80W | 100W  
150W | 220W | 300W

**Yoke Mount**



**Knuckle Mount**  
(only available in 30W/50W)

**Technical Specifications**

Watts:	30W   50W   80W 100W   220W   300W
Size:	See Reverse
Lumen Output:	3000lm   4900lm   8600lm   11,000 lm   16,400lm   24,000lm 32,5000
CCT:	Cool White   5700K
Voltage:	AC100-277V (210V/480V Available)
Beam Angle:	120°
Qualifications:	DLC   CE   cUL   RoHS
CRI:	>75Ra
PF:	0.9
IP Rate:	IP65
Lifespan:	50,000 hours



- This light is ideal for illuminating any outdoor space! When lighting matters, you can be sure to rely on the FLT Floodlight to enhance your buildings!
- This floodlight is perfect for hospitals, hotels, grocery stores and more!

# LED SHOEBOX LIGHT

**SES-SBN**  
60W | 90W | 120W | 150W  
150W-HV | 185W | 240W | 300W



Technical Specifications	
Watts:	60W   90W   120W   150W   150W-HV   185W   240W   300W
Size:	See Reverse
Lumen Output:	8700lm   13,000lm   16,000lm   19,000lm   19,000lm   18,500lm   26,945lm   31,904lm   42,260lm
CCT:	Cool White   5700K
Beam Angle:	150°85°
Voltage:	AC100-240V
Qualifications:	DLC   CE   eUL   RoHS
CRI:	≥80Ra
PF:	0.9
IP Rate:	IP65
Lifespan:	50,000 hours



- This light is perfect for providing direct lighting to any exterior surface.
- These lights are suitable for outdoor basketball courts, tennis courts, football fields, entertainment plazas and more.

# LED STREET LIGHT

**SES-STZM**  
35W | 65W | 100W | 135W  
165W | 200W | 230W



Technical Specifications	
Watts:	35W   65W   100W   135W 165W   200W   230W
Size:	See Reverse
Lumen Output:	3325lm   6175lm   9500lm 15,675lm   19,000lm   21,850lm
CCT:	Cool White   4000K
Voltage:	AC100-277V (347V/480V Available)
Beam Angle:	135° (Type II, III, IV)
Qualifications:	DLC   CE   cUL   RoHS
CRI:	>70Ra
PF:	0.9
IP Rate:	IP66
Lifespan:	50,000 hours



- This revolutionary product adopts the latest technology, replacing traditional lights with energy-efficient LEDs
- Illuminate the roadway to your business, or light your city with these cool white lights.

# LED POLE LIGHT

**SES-FLT**  
80W | 100W  
150W | 220W | 300W



Technical Specifications	
Watts:	80W   100W   220W   300W
Size:	See Reverse
Lumen Output:	8600lm   11,000 lm   16,400lm 24,000lm   32,5000
CCT:	Cool White   5700K
Voltage:	AC100-277V (210V/480V Available)
Beam Angle:	120°
Qualifications:	DLC   CE   cUL   RoHS
Base:	Extruded Arm Adjustable Slipfitter
CRi:	>75Ra
PF:	0.9
IP Rate:	IP65
Lifespan:	50,000 hours



- These fixtures come with extruded arm, adjustable slipfitter or yoke mount applicable to multiple mounting options.
- LED pole lights provide a great replacement for traditional metal halides and HPS flood lights providing up to 70% energy savings.



# LED HIGH BAY

**SES-HB**  
100W | 150W | 220W



**Technical Specifications**

Watts:	100W   150W   220W
Size:	Ø14.0x5.2"   Ø14.0x5.5" Ø14.0x6.9"
Lumen Output:	12,400lm   18,500lm   26,300lm
CCT:	Cool White   5700K
Voltage:	AC100-277V (210-480V Available)
Beam Angle:	60° or 90°
Qualifications:	cUL   UL   DLC
Base:	Yoke   Pendant
CRI:	>80Ra
PF:	≥0.9
IP Rate:	IP65
Lifespan:	50,000 hours



- This product adopts the latest LED technology with high lumen efficiency combined with specially designed acrylic lens to provide optimum light distribution.
- This light is perfect for buildings with high ceilings such as warehouses.

# CANOPY LIGHTS

**SES-CP**  
100W | 130W | 150W



Technical Specifications	
Watts:	100W   130W   150W
Size:	15"x15"x2.8"
Lumen Output:	11,500lm   14,500 lm   16,500lm
CCT:	Natural White   4000K Cool White   5700K
Voltage:	AC100-277V   50-60Hz
Beam Angle:	120°
Qualifications:	UL   DLC   CE   RoHS
CRI:	>80Ra
PF:	0.9
IP Rate:	IP65
Lifespan:	50,000 hours
Options:	Drop Lens or Frosted Cover



- These canopy lights are perfect for gas station canopies, hotel or hospital car ports and more!
- This light is offered in day light color.
- This product adopts the latest LED technology with high lumen efficiency combined with easy to install and adaptive design.

# CANOPY LIGHTS, CPH

**SES-CPH**  
150W | 180W | 240W



**Technical Specifications**

Watts:	150W   180W   240W
Size:	See Reverse
Lumen Output:	20,000lm   24,500lm   31,500lm
CCT:	Natural White   4000K, 4500K Cool White   5000, 5700K
Voltage:	AC100-240V   100-277V 50-60Hz
Beam Angle:	120°
Qualifications:	DLC   CE   eUL   RoHS
CRI:	80Ra
PF:	0.9
IP Rate:	IP65
Lifespan:	50,000 hours



- This canopy light is perfect for gas station canopies, hotel or hospital car ports and more!
- This product adopts the latest LED technology with high lumen efficiency combined with easy to install and adaptive design.

# LED CAN LIGHT – 6” ROUND

**SES-DLBR**  
13W



**Technical Specifications**

Watts:	13W
Size:	Ø7.5"X3.4"
Lumen Output:	1000lm   1050lm   1100lm   1200lm
CCT:	Warm White   3000K Natural White   4000K Cool White   5000K
Voltage:	120V
Beam Angle:	120°
Certifications:	UL   ES
Base:	E26   GU24
CRI:	≥80Ra
PF:	>0.9
Lifespan:	50,000 hours
Options:	Dimmable: 0-10V



- The 6" can light provides decorative accent lighting where other lighting solutions may not fit.
- This light is offered in soft white and day light colors.

# LED FLUSH MOUNT

**SES-CLTP**  
15W | 18W



**Technical Specifications**

Watts:	15W   18W
Size:	Ø11.02"X4.09" Ø13.78"X4.13"
Lumen Output:	1000lm   1600lm
CCT:	Cool White   5000K
Voltage:	AC100-240V 50Hz
Beam Angle:	120°
Qualifications:	UL   DLC   FCC
CRI:	≥80
PF:	0.9
Lifespan:	30,000 hours



- This fixture is the perfect light for any interior room and would be perfect for hotels, offices, or other interior spaces.
- This light is offered in soft white and day light colors.

# LED ROUND PANEL

**SES-RPWV**  
11W



**Technical Specifications**

Watts:	11W
Size:	Ø7.09X.51"
Lumen Output:	1066lm
CCT:	Cool White   5000K
Voltage:	AC90-277V
Beam Angle:	120°
Certifications:	UL   FCC
CRI:	>72
Lifespan:	30,000 hours



- When traditional fixtures are too much, this light provides just the right accent.
- The round panel light is great for hotels, offices, hospitals and more!

# LED INTEGRATED TUBELIGHT

**SES-4INT**  
22W  
**SES-8INT**  
45W



Technical Specifications	
Watts:	22W   45W
Size:	142X47.17" 142X94.41"
Lumen Output:	2420lm   4950lm
CCT:	Cool White   5000K
Voltage:	AC90-277V
Beam Angle:	80°
Qualifications:	DLC*   ETL
CRI:	80
PF:	0.9
IP Rate:	IP65
Lifespan:	50,000 hours



- This product adopts the latest LED technology with high lumen efficiency combined with specially designed integrated fixture tube.
- This light is perfect for any interior space, or parking garages.

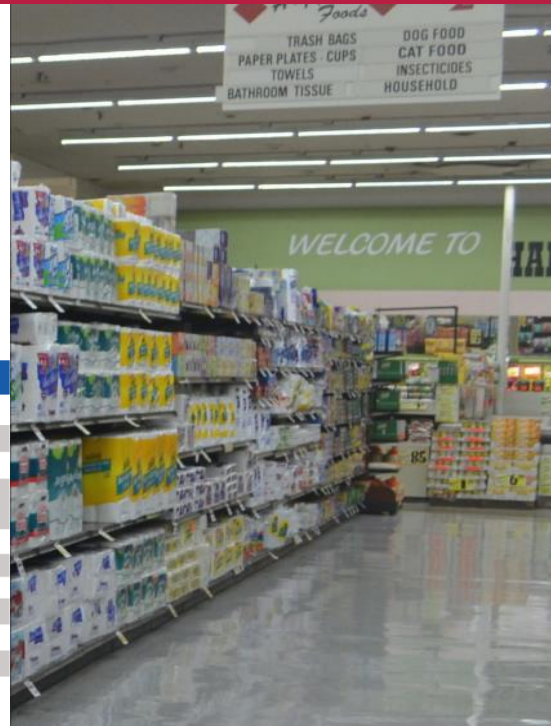
# LED TUBELIGHT (PINTUBES)

**SES-2T8**  
10W  
**SES-4T8**  
12W | 18W



**Technical Specifications**

Watts:	10W   12W   18W
Size:	See Reverse
Lumen Output:	950lm   1750lm   2000lm
CCT:	Warm White   3000K Natural White   4000K Cool White   5000K   6500K
Voltage:	AC100-277V
Beam Angle:	150°
Qualifications:	UL   DLC   CE   FCC   RoHS
CRI:	>80Ra
PF:	>0.95
Lifespan:	50,000 hours
Options:	Internal Driver, Non-Dimmable Frosted or Clear Covers Available



- These lights are suitable for broad applications including schools, and office buildings and will reduce energy bills to provide significant energy savings.



# LED TRI-PROOF

**SES-TR4FT**  
40W  
**SES-TR6FT**  
75W



Technical Specifications	
Watts:	4FT: 40W 6FT: 75W
Size:	See Reverse
Lumen Output:	3850lm   6950lm
CCT:	Cool White   5000K
Voltage:	100-240V
Beam Angle:	120°
Qualifications:	UL   DLC
CRI:	>80Ra
PF:	0.95
IP Rate:	IP65
Lifespan:	50,000 hours



- These applications include: basic commercial lighting, shopping lighting, hotel lighting, office lighting and hall lights.
- The Tri-Proof fixture series is also suitable for commercial parking lots, airports, subways and more.

# LED WRAPAROUND LIGHT

**SES-WR**  
48W



**Technical Specifications**

Watts:	48W
Size:	See Reverse
Lumen Output:	4000lm
CCT:	Natural White   3000K Warm White   4000K Cool White   5000K
Voltage:	120Vac,60Hz
Qualifications:	ETL   cETL   Energy Star
CRI:	>80Ra
PF:	0.95
IP Rate:	IP20
Lifespan:	35,000 hours



- This light is perfect for any space, and would be perfect for auto body shops, dealerships and more!

# LED T8 TUBE LIGHT, U-TUBE

**SES-U2T8**  
18W



**Technical Specifications**

Watts:	18W
Size:	See Reverse
Lumen Output:	2160lm
CCT:	Warm White   4000K Cool White   5000K
Voltage:	AC100-277V 50-60Hz
Qualifications:	ETL   cETL   DLC
CRI:	>80Ra
IP Rate:	IP20
Lifespan:	50,000 hours
Options:	Dimmable



- These lights are suitable for broad applications and will reduce energy bills to provide significant energy savings throughout the products lifetime.

# REFRIGERATOR FIXTURES

**SES-5FTCL**  
32W  
**SES-6FTCL**  
40W



**Technical Specifications**

Watts:	32W   40W
Size:	Ø.5"X58.7" Ø.5"X70.6"
Lumen Output:	3900lm   4900lm
CCT:	Cool White   5000K
Voltage:	AC90-277V
Beam Angle:	180°
Qualifications:	ETL   DLC   CE
CRI:	>80Ra
PF:	0.9
Lifespan:	50,000 hours



- This light is wet location rated so it will be safe inside your refrigerated units to help illuminate your products to help increase your sales!
- This cooler light is perfect for gas stations, grocery stores and other more!

# LED CORN LAMPS

**SES-CLH**  
27W | 36W | 54W  
75W | 95W | 115W



**Technical Specifications**

Watts:	27W   36W   54W 75W   95W   115W
Size:	See Reverse
Lumen Output:	3510lm   4680lm   7020lm 9750lm   12,350lm   14,950lm
CCT:	Cool White   5000K
Voltage:	AC100-240V   50-60Hz
Beam Angle:	180°
Qualifications:	DLC*   CE   cUL   RoHS
CRI:	>80Ra
PF:	0.9
IP Rate:	IP65
Lifespan:	50,000 hours



- Suitable for retrofitting parking lots, shoebox lights, streetlights, floodlights, and wall packs.

# LED CORN LAMP

**SES-CLSC**  
30W | 40W | 60W | 80W



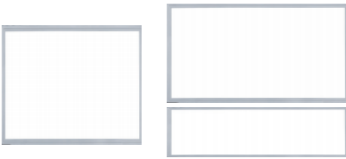
**Technical Specifications**

Watts:	30W   40W   60W   80W
Size:	See Reverse
Lumen Output:	3000lm   4000lm   6000lm   8000lm
CCT:	Cool White   5700K
Voltage:	AC100-277V
Beam Angle:	360°
Certifications:	UL   CE
Base:	E26   E27   E39   E40
CRI:	>70Ra
IP Rate:	IP40
Lifespan:	50,000 hours



- This lamp is perfect for outdoor use where having bright light is of utmost importance; gas stations, hospitals, office buildings and more will find this lamp to greatly improve outdoor lighting perceptions.

# LED PANEL

<b>SES-1X4PL</b> 40W	
<b>SES-2X2PL</b> 40W/55W	
<b>SES-2X4PL</b> 72W	
	
<b>Technical Specifications</b>	
Watts:	1X4   40W 2X2   40W/55W 2X4   72W
Size:	See Reverse
Lumen Output:	3800lm   3900lm   5800lm   6500lm
CCT:	Warm White   3000K Natural White   4000K Cool White   5000K
Voltage:	120-277V
Beam Angle:	140°
Qualifications:	DLC   CE   ETL   RoHS
CRt:	>80Ra
PF:	0.95
Lifespan:	50,000 hours



- These LED Panel Lights are designed to install quickly and easily in T-bar ceiling grids or pendant.
- When illuminated, the side reflectors also deliver beautiful, even LED light to a wider range in the space as if they are integrated with the panel.

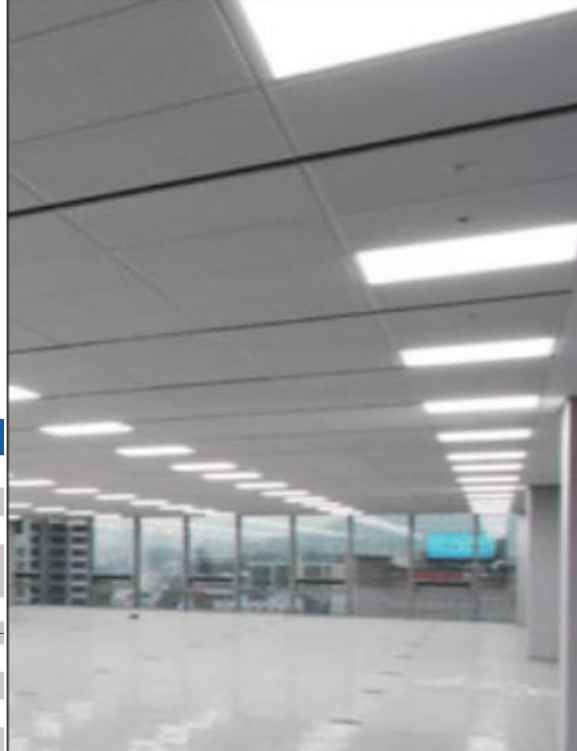
# LED PANEL LIGHTS

**SES-P4**  
50W  
**SES-P7**  
75W



**Technical Specifications**

Watts:	50W   75W
Size:	See Reverse
Lumen Output:	5500lm   8250lm
CCT:	Warm White   3000K Cool White   5000K Cool White   5700K
Voltage:	AC100-240V
Qualifications:	DLC   UL   cUL   CE   FCC   RoH
CRI:	>80Ra
PF:	>0.9
Lifespan:	50,000 hours
Options:	Dimmable



- This revolutionary product adopts the latest technology, replacing traditional lights with energy-efficient LEDs
- This light is perfect for interior lighting in offices, hotels, waiting rooms and more!



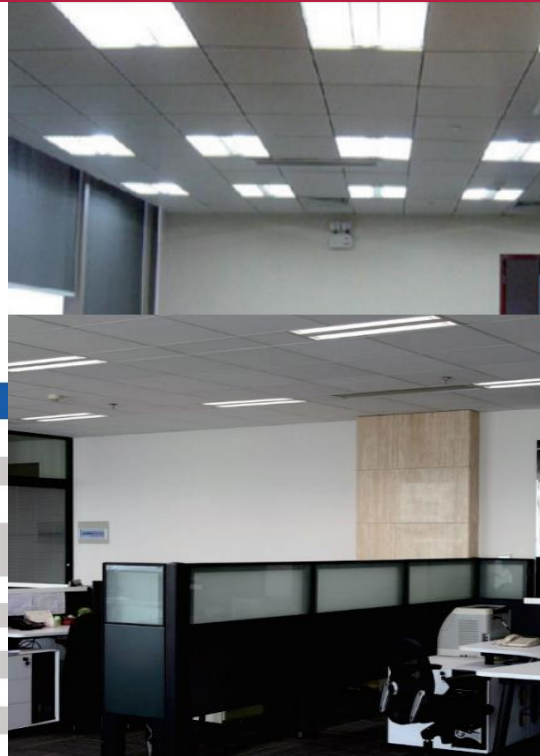
# LED INDIRECT TROFFER

**SES-DIFX-2X2**  
24W | 36W  
**SES-DIFX**  
42W | 68W



**Technical Specifications**

Watts:	2X2: 24W   36W 2X4: 42W   68W
Size:	See Reverse
Lumen Output:	2200lm   3400lm   3900lm 6400lm
CCT:	Warm White   3000K Natural White   4000K Cool White   5000K
Voltage:	120-277V
Beam Angle:	120°
Qualifications:	UL   DLC
CRI:	>80Ra
PF:	0.9
Lifespan:	50,000 hours
Options:	Dimmable: 0-10V



- This indirect light is perfect for areas where soft lighting is ideal.
- Spaces like offices, waiting rooms, school rooms and the like would benefit from this great lighting series.

# LED FLOOD LIGHT POWER BANK

**SES-PB**  
10W



**Technical Specifications**

Watts:	10W
Size:	4.02x3.15x1.02 IN
Lumen Output:	400lm
CCT:	Cool White   6000K
Charge Voltage:	5VDC   1A
Battery:	3.7V   4.0A
Qualifications:	DLC   CE   cUL   RoHS
CRI:	>70Ra
PF:	0.9
IP Rate:	IP65



- This light may be small, but it is mighty! Utilizing only 10W and producing 400 lumens.
- This combination light and charger is perfect for your next adventure, or outdoor project.

# LED SOLAR LIGHT

**SES-SWL-C**  
2W



Technical Specifications	
Watts:	2W
Size:	See Reverse
Lumen Output:	200lm
CCT:	Warm White   3000K
Beam Angle:	120°
Voltage:	DC3.7V
Qualifications:	CE   RoHS
CRi:	>80Ra
PF:	0.95
IP Rate:	IP65
Lifespan:	35,000 hours



- This solar light is the perfect solution for areas where adding new electrical wiring would be difficult. This light would be great for office buildings, hotels, schools and more!

# LED SOLAR LIGHT

**SES-SWL**  
1.5W | 2W | 3.2W | 6.8W



**Technical Specifications**

Watts:	1.5W   2W   3.2W   6.8W
Size:	See Reverse
Lumen Output:	200lm   260lm   400lm   800lm
CCT:	Backlight   Warm White ~3000K Frontlight   Cool White ~6000K
Beam Angle:	120°
Voltage:	DC3.7V
Qualifications:	CE   RoHS
CRI:	≥80Ra
PF:	0.95
IP Rate:	IP65
Lifespan:	35,000 hours



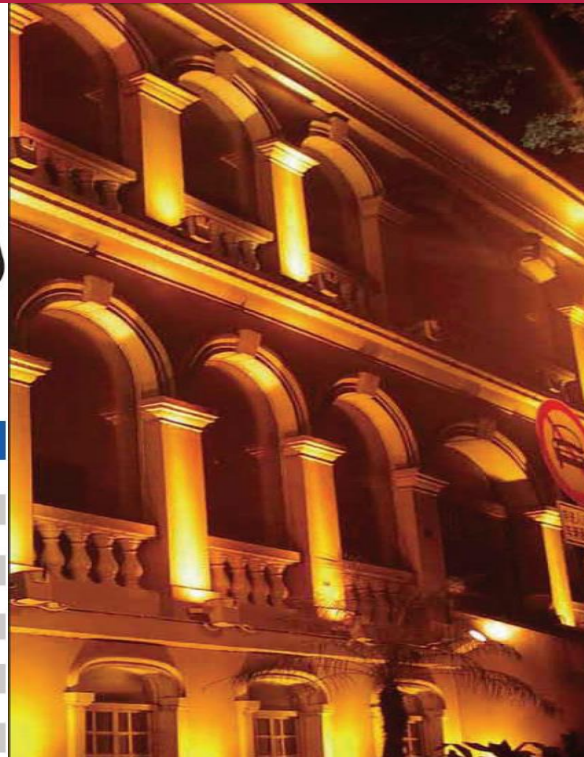
- These solar lights feature a continuous backlight design, which is activated at dusk to set the environment for your location.
- This solar light is the perfect solution for areas where adding new electrical wiring would be difficult. This light would be great for office buildings, hotels, schools and more!

# WALL PACK – PARTIAL CUT-OFF

**SES-WPBR**  
40W | 60W | 80W



Technical Specifications	
Watts:	40W   60W   80W
Size:	See Reverse
Lumen Output:	3600lm   5400lm   7200lm
CCT:	Cool White   5000K
Voltage:	AC100-277V
Beam Angle:	120°
Qualifications:	DLC   FCC   cUL
PF:	>0.95
IP Rate:	IP65
Lifespan:	50,000 hours



- We are excited to offer many variety of LED wall pack models to fit various lighting and aesthetic needs.
- Each of these models provide excellent light distribution while providing energy savings of up to 70%.
- This wall pack is perfect for illuminating the sides of any building including hotels, hospitals, grocery stores, and more!

# LED WALL PACK, ROTATABLE

**SES-WPR**  
25W | 40W | 60W | 80W



**Technical Specifications**

Watts:	25W   40W   60W   80W
Size:	See Reverse
Lumen Output:	3300lm   5100lm 7700lm   12,000lm
CCT:	Cool White   5700K
Beam Angle:	60°
Voltage:	AC100-240V
Qualifications:	DLC   CE   cUL   RoHS
CRI:	≥80Ra
PF:	0.9
IP Rate:	IP65
Lifespan:	50,000 hours



- This light is perfect for many applications and provides just the right lighting with its adjustable lighting.
- This light is ideal for gas stations, hospitals, schools and office buildings.

# LED WALL PACK

**SES-WPP**  
60W | 80W | 100W | 120W



**Technical Specifications**

Watts:	60W   80W   100W   120W
Size:	See Reverse
Lumen Output:	6900lm   9200lm   11,500lm 13,800lm
CCT:	Cool White   5700K
Voltage:	AC100-240V   100-277V 50-60Hz
Beam Angle:	110°
Qualifications:	DLC   CE   cUL   RoHS
CRI:	≥80Ra
PF:	0.9
IP Rate:	IP65
Lifespan:	50,000 hours



- This light adopts the latest high quality LEDs to directly replace traditional lighting.
- It is suitable for broad applications including entrances, landscapes, courtyards, wall lighting, and more!

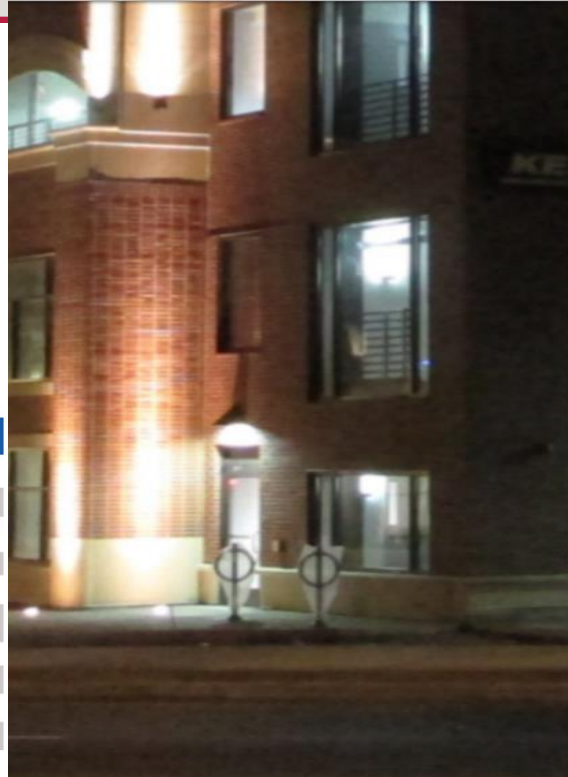
# LED WALL PACK

**SES-WPN**  
60W | 80W | 100W | 120W



**Technical Specifications**

Watts:	60W   80W   100W   120W
Size:	See Reverse
Lumen Output:	7500lm   10,500lm   12,400lm 14,000lm
CCT:	Cool White   5700K
Beam Angle:	150°   85°
Voltage:	AC100-240V   100-277V 50-60Hz
Qualifications:	DLC   CE   cUL   RoHS
CRI:	≥80Ra
PF:	0.9
IP Rate:	IP65
Lifespan:	50,000 hours



- When you need to provide lighting for illuminating your building this light is the perfect solution.
- This light is ideal for hospitals, and grocery stores.



# LED WALL PACK

**SES-WPB**  
18W | 26W



Technical Specifications	
Watts:	18W   26W
Size:	See Reverse
Lumen Output:	2000lm   2680lm
CCT:	Warm White   3000K Cool White   5000K, 5700K
Beam Angle:	108°
Voltage:	AC100-277V
Qualifications:	ETL   cETL   DLC
CRI:	>80Ra
PF:	0.95
IP Rate:	IP65
Lifespan:	50,000 hours
Options:	Non-Dimmable, photocell available



- The WPB Wall Pack comes with a built in photocell sensor to automatically trigger upon nightfall.
- This light is perfect for many exterior applications including hotels, warehouses, grocery stores and more!



Tel.: [4804478619](tel:4804478619)

Fax: 972-290-0608

Email: [ledsmartenergyaz@gmail.com](mailto:ledsmartenergyaz@gmail.com)

1705 W University Dr

Suite # 102

Tempe, AZ 85281

Website: [www.smartledtx.com](http://www.smartledtx.com)