



Multi-pole Plug & Sockets

There are many occasions when you may need to use multi-pole connectors. There are a number of different types of connectors to suit your specific requirements. Each connector has its own slightly different current rating and amount of terminals.

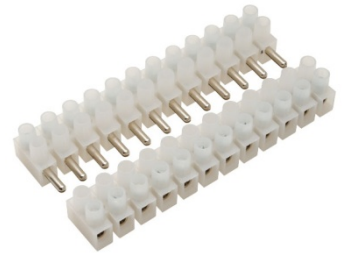
Pluggable 12 way Terminal Block.

A pluggable industrial quality terminal strip rated at 6 Amps or 10 Amps moulded in PLP with flammability rating of UL94V-2. The terminal strips can be cut to suit any size required.

The terminal strip has fixing holes between each terminal.

CN179 12 way 6 Amp Male Female Terminal Strip

CN180 12 way 10 Amp Male Female Terminal Strip



Scart 21 way Plug and Socket set.

A Scart male & female also chassis socket connector ideal for extension data cables and small power cables on demountable layouts. A pre made Male to Male 1.5m cable is also available. Cable diameter approx. 7 to 11mm From left to right.

CN200 Scart 21 way In Line Male Plug

CN202 Scart 21 way In Line Female Connector

CN204 Scart 21 way Chassis Mounting Female Connector

CN206 Scart 21 way Plug to Plug 1.5m Lead



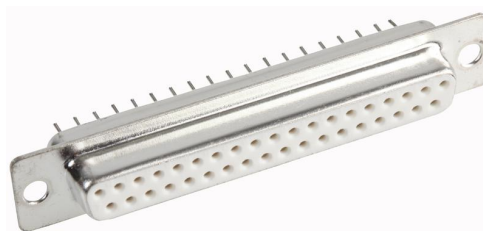
'D' Type 25 way or 37 way Connectors.

Superior quality commercial sub-miniature D connectors, with solder bucket terminals. Contact rating: 1 A Dielectric Strength 500 VAC. Also available in 25 way, and 37 way. From left to right

Chassis mounting Male connector, 25 way DS120, 37 way DS130

Chassis mounting Female connector, 25 way DS121, 37 way DS131

Plug & Socket Housing, 25 way Ds122, 37 way DS132



Locking Multipole Connector.

The ZC series are available in a range of 4 pole to 8 pole plugs and sockets. Primarily they are intended for high-quality, touch-safe connector system with reliable locking in low voltage and signal applications. Contacts are tin plated and other metal parts are brass , nickel plated. Cable is secured by a cable clamp, and complies with the safety requirements of IEC 65/348.

Multipole Connector 8 way Chassis Socket– MC121

Multipole Connector 8 way Plug – MC119

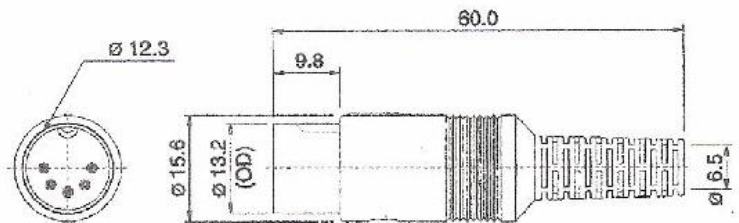
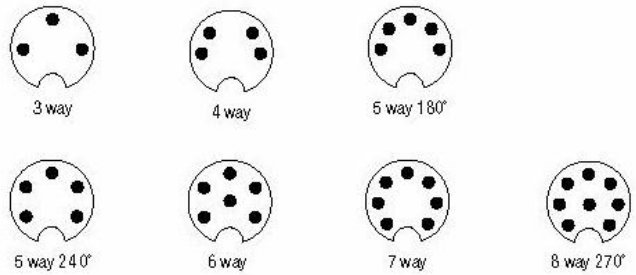
Multipole Connector 8 way In Line plug – MC120



DIN In Line Plugs & Sockets in 4,5,6,7,8 Pin available.

Industry standard DIN plugs with solder connection and tinned contacts. Chassis mounting metal DIN sockets with plastic insert. Two screw fixing.

Fixing centres 22mm. Withstands voltage: 250V AC for 1 minute.



Multicore Cables.

Multicore cable is available in either 7/0.2mm, 16/0.2mm & 7/0.2mm screened.

The cable is available in 3, 4, 6, 8, 12, 18, 25 core.