

UltraCraft Performance Construction Architectural Specifications

Two distinct lines; both built on the same quality platform.

Destiny: our flagship line

- ▶ Thousands of door style/finish combinations
- ▶ Traditional, transitional and contemporary styles in Wood, Lux, Metal, Thermofoil and Melamine
- ▶ Manufactured with EPP-Certified engineered wood or plywood
- ▶ Wood Dovetail or Metal Drawer with full-extension, undermount, soft-close glides
- ▶ Delivers in five weeks

Vision: our value-priced line

- ▶ 19 door style/finish selections ranging from traditional to contemporary in Eurotek Veneer
- ▶ Wood Dovetail drawers with full-extension, undermount, soft-close glides. Wood Dovetail Pull-outs also with full-extension, undermount, soft-close glides
- ▶ Delivers in four weeks

UltraCraft Advantages

- ▶ Low charge premium wood finishes including Paints, Custom Paint Colors, Glazes, Brushed Linen, Sangria and Distressing: Vintage, Aged, Rubbed, Worn and Heritage
- ▶ No charge custom modifications for width, depth and height where available
- ▶ No charge Low Sheen option on Wood door styles
- ▶ Performance box construction with solid 5/8" back
- ▶ 6-way-adjustable clip-on hinges for precise door alignment. Soft-close hinges are standard on Destiny
- ▶ All hinges and glides are covered by a limited lifetime warranty
- ▶ Unobstructed access
- ▶ Adjustable full-depth shelves for more storage space
- ▶ Flush finished ends for a furniture-like appearance and easy installation
- ▶ Easy-to-clean melamine interiors
- ▶ Comprehensive selection of matching moldings
- ▶ Over 90 consumer convenience accessories
- ▶ Easy to install
- ▶ Made in the USA
- ▶ 100-Year Limited Warranty from UltraCraft



ultracraft[®]
custom cabinets for life

www.ultracraft.com

800-262-4046

DESTINY

ARCHITECTURAL SPECIFICATIONS

CABINET BOX:

- 1 OUR CABINETRY IS MANUFACTURED WITH 5/8"-THICK ENVIRONMENTALLY-FRIENDLY EPP-CERTIFIED ENGINEERED WOOD OR PLYWOOD PANELS
- 2 DOWEL-AND-GLUE JOINERY AND FULLY-CAPTURED, MACHINE-FITTED BACK PANEL
- 3 FLUSH BOTTOM, TOP, AND FINISHED ENDS FOR A FURNITURE-LIKE APPEARANCE AND EASY INSTALLATION
- 4 FOOTED MOLDINGS AND LIGHT RAILS SECURE TO FLUSH TOPS AND BOTTOMS OF WALL CABINETS
- 5 FULL-WIDTH STRETCHERS FRONT AND REAR PROVIDE SOLID SUPPORT AND MOUNTING SURFACE FOR COUNTER TOPS
- 6 TOE-SPACE BLOCKING FRONT AND REAR PROVIDES STRENGTH FOR OPTIONAL COORDINATING TOE KICK COVER

EXTERIOR:

- 7 TOPS, BOTTOMS AND UNFINISHED ENDS ARE COVERED IN WHITE OR NEUTRAL WOODGRAIN MELAMINE, PROVIDING COMPLETE COVERAGE OF THE ENGINEERED WOOD CORE; FINISHED ENDS, INTERIORS AND PANELS ARE COVERED IN COLOR-COORDINATED MATERIAL
- 8 FRONT EDGES HAVE MATCHING WOOD OR COORDINATING PVC EDGE BANDING; TOPS, BOTTOMS, AND BACKS OF END PANELS ARE ALSO EDGE BANDED

INTERIOR:

- 9 STANDARD WHITE OR NEUTRAL WOODGRAIN MELAMINE INTERIOR; OPTIONAL COORDINATING INTERIOR AVAILABLE

SHELVING:

- 10 3/4"-THICK, ADJUSTABLE, FULL-DEPTH SHELVING WITH EDGE BANDING AND METAL SHELF CLIPS

HINGES:

- 11 STEEL, FULLY-CONCEALED, CLIP-ON/OFF, SELF-CLOSING, 107°, 6-WAY-ADJUSTABLE HINGE WITH A LIFETIME MANUFACTURER'S WARRANTY AND SOFT CLOSE OPERATION

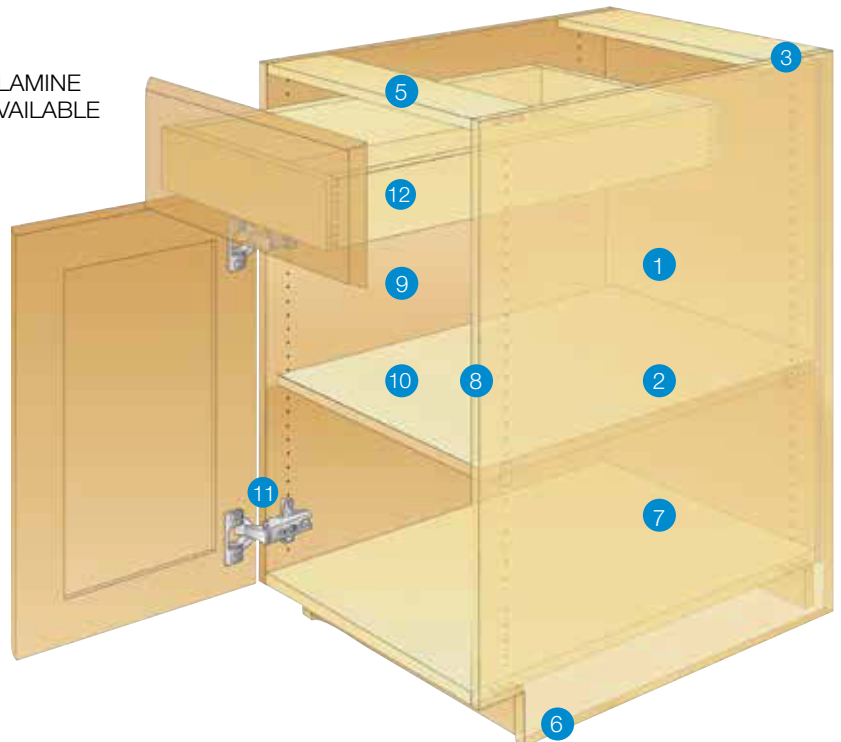
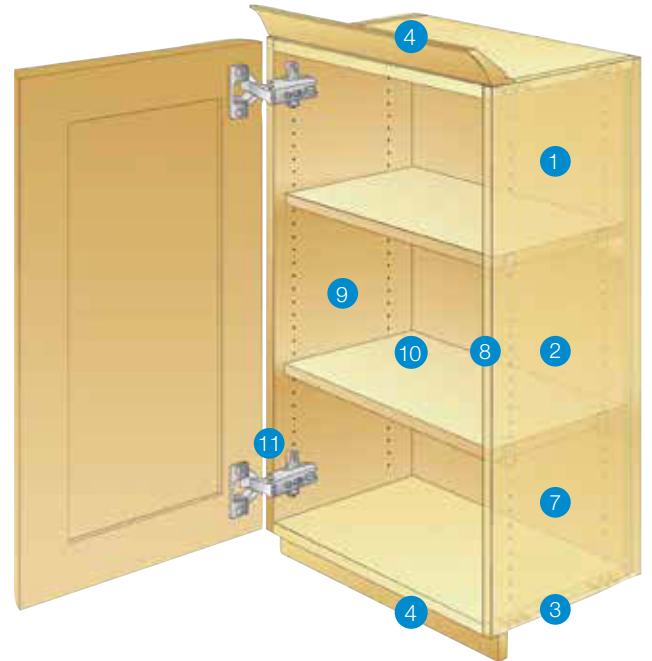
STANDARD DRAWER SYSTEMS:

- 12 WOOD DOVETAIL DRAWER
5/8"-THICK, DOVETAILED SIDES AND BACK, 1/4"-THICK, FULLY-CAPTURED BOTTOM, AND FULL-EXTENSION, 100-POUND-RATED TANDEM, UNDERMOUNT GLIDES WITH SOFT CLOSE. SOFT CLOSE ALLOWS DRAWER TO CLOSE QUIETLY WITH JUST A TOUCH. STANDARD ON CABINETS WITH ALL DOOR STYLES EXCEPT LUX. WOOD DOVETAIL PULL-OUTS, WITH SOFT CLOSE, ARE AVAILABLE AS AN UPGRADE

METAL DRAWER

STAINLESS STEEL-LOOK-ALUMINUM SIDES WITH ANTI-FINGERPRINT COATING, 5/8"-THICK, GRAY MELAMINE BACK AND BOTTOM, AND FULL-EXTENSION, 75-POUND-RATED TANDEM, UNDERMOUNT GLIDES WITH SOFT CLOSE. SOFT CLOSE ALLOWS DRAWER TO CLOSE QUIETLY WITH JUST A TOUCH. STANDARD ON CABINETS WITH LUX DOOR STYLES AND OPTIONAL ON CABINETS WITH ALL OTHER DOOR STYLES. METAL PULL-OUTS, WITH SOFT CLOSE, ARE AVAILABLE AS AN UPGRADE

ALL GLIDES HAVE A LIFETIME MANUFACTURER'S WARRANTY



VISION

ARCHITECTURAL SPECIFICATIONS

CABINET BOX:

- 1 OUR CABINETRY IS MANUFACTURED WITH ENVIRONMENTALLY-FRIENDLY EPP-CERTIFIED ENGINEERED WOOD PANELS
- 2 5/8" THERMOSET MELAMINE BOARD WITH DOWEL-AND-GLUE JOINERY AND FULLY-CAPTURED, MACHINE-FITTED BACK PANEL
- 3 FLUSH BOTTOM, TOP, AND FINISHED ENDS FOR A FURNITURE-LIKE APPEARANCE AND EASY INSTALLATION
- 4 FOOTED MOLDINGS AND LIGHT RAILS SECURE TO FLUSH TOPS AND BOTTOMS OF WALL CABINETS
- 5 FULL-WIDTH STRETCHERS FRONT AND REAR PROVIDE SOLID SUPPORT AND MOUNTING SURFACE FOR COUNTER TOPS
- 6 TOE-SPACE BLOCKING FRONT AND REAR PROVIDES STRENGTH FOR OPTIONAL COORDINATING TOE KICK COVER

EXTERIOR:

- 7 TOPS, BOTTOMS AND UNFINISHED ENDS ARE COVERED IN NEUTRAL WOODGRAIN MELAMINE, PROVIDING COMPLETE COVERAGE OF THE ENGINEERED WOOD CORE; FINISHED ENDS, INTERIORS AND PANELS ARE COVERED IN COLOR-COORDINATED MELAMINE
- 8 FRONT EDGES HAVE COORDINATING PVC EDGEBANDING; TOPS, BOTTOMS, AND BACKS OF END PANELS ARE ALSO EDGEBANDED

INTERIOR:

- 9 STANDARD NEUTRAL WOODGRAIN MELAMINE INTERIOR; OPTIONAL COORDINATING INTERIOR ON OPEN CABINETS AND CABINETS WITH DOORS PREPARED FOR GLASS

SHELVING:

- 10 3/4"-THICK, ADJUSTABLE, FULL-DEPTH SHELVING WITH EDGE BANDING AND METAL SHELF CLIPS

HINGES:

- 11 STEEL, FULLY-CONCEALED, CLIP-ON/OFF, SELF-CLOSING, 107°, 6-WAY-ADJUSTABLE HINGE WITH A LIFETIME MANUFACTURER'S WARRANTY. SOFT-CLOSE HINGE IS AVAILABLE AS AN UPGRADE

STANDARD DRAWER:

WOOD DOVETAIL DRAWER WITH SOFT CLOSE 5/8"-THICK, DOVETAILED SIDES AND BACK, 1/4"-THICK, FULLY-CAPTURED BOTTOM, AND FULL-EXTENSION, 100-POUND-RATED TANDEM, UNDERMOUNT GLIDES WITH SOFT CLOSE. SOFT CLOSE ALLOWS DRAWER TO CLOSE QUIETLY WITH JUST A TOUCH. STANDARD ON CABINETS WITH ALL DOOR STYLES. WOOD DOVETAIL PULL-OUTS WITH SOFT CLOSE ARE AVAILABLE AS AN UPGRADE

OPTIONAL PULL-OUT:

WOOD DOVETAIL PULL-OUT WITH SOFT CLOSE 5/8"-THICK, DOVETAILED SIDES AND BACK, 1/4"-THICK, FULLY-CAPTURED BOTTOM, AND FULL-EXTENSION, 75-POUND-RATED TANDEM, UNDERMOUNT GLIDES.

ALL GLIDES HAVE A LIFETIME MANUFACTURER'S WARRANTY

