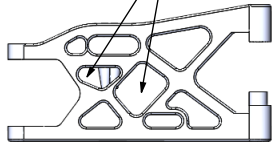
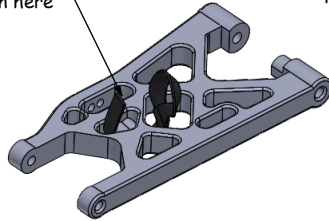


MIP Limiter Strap Set, 1/5th Scale

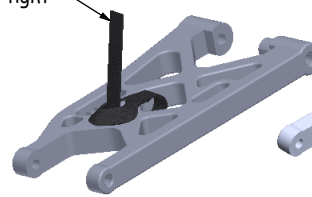
1. Thread MIP Limiter straps through suspension arm here



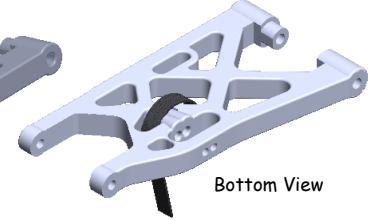
As shown here



2. Now thread strap end through loop and pull tight

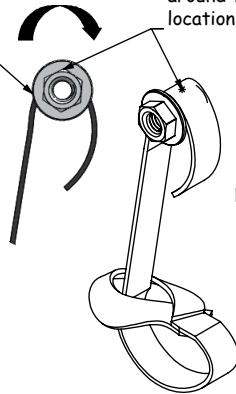


Top View



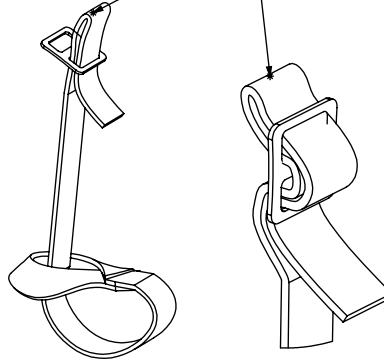
Bottom View

3. Replace stock shock nuts with MIP upper strap mount nuts

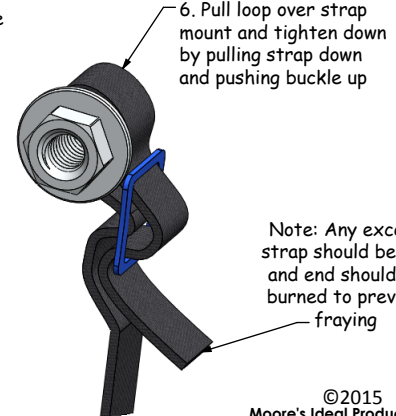


4. With nut and limiter strap mounted to the car. Wrap the end of the limiter strap around the strap mount and mark the location at the top of the strap as pictured

Note: Set the strap limit at maximum suspension travel



5. Pull strap through buckle slot at mark location as shown and then loop strap back into buckle



6. Pull loop over strap mount and tighten down by pulling strap down and pushing buckle up

Note: Any excess strap should be cut and end should be burned to prevent fraying

Recommended MIP Accessories for your 1/5th Scale

- 5201** MIP Blue Thread Gel & Grease Cup
- 5202** MIP Blue Thread Gel Cup
- 5203** MIP Grease Cup
- 8117** MIP MXT-1 Servo Tape (2pcs 1in. x 5in.)
- 9501** MIP Hex Driver Wrench Set, SAE Standard (4)
- 9502** MIP Hex Driver Wrench Set, Metric (3)
- 9511** MIP Speed Tip™ Hex Driver Wrench Insert Set, SAE Standard
- 9512** MIP Speed Tip™ Hex Driver Wrench Insert Set, Metric
- 14350** MIP Header Lock Kit, Losi 5ive-T
- 14355** MIP 1/5th Scale 54mm Racing Clutch, 8-Shoe
- 14360** MIP 1/5th Scale Real Brakes Kits, Losi 5ive-T
- 14370** MIP 1/5th Scale, 32mm Big Bore Bypass1™ Shock Kit
- 15120** MIP 1/5th Scale, Super Diff Kit, Losi 5ive-T

