

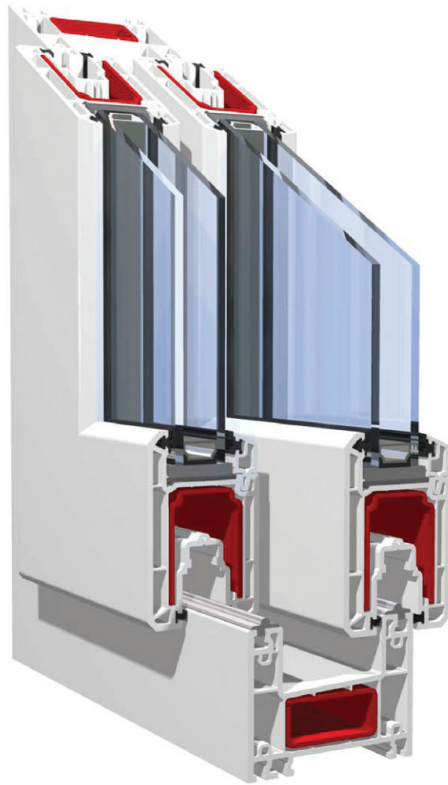
PREMILINE

Profile system KÖMMERLING Premiline with 3 chambers

Profilsystem KÖMMERLING Premiline mit 3 Kammern

Sistema di profili KÖMMERLING Premiline con 3 camere

Sistemul de profile cu 3 camere KÖMMERLING Premiline



Profile System Manufacturer
 Kömmerling
 Pirmasens
 Deutschland



Heat transfer coefficient up to
 Wärmedurchgangskoeffizient bis
 Trasmittanza termica fino a
 Transmitanta termica pana la $U_f = 2,1 \text{ W/(m}^2\text{K)}$



Resistance to wind load up to
 Widerstandsfähigkeit gegen Windlast bis
 Resistenza ai carichi di vento fino a
 Rezistentă la încărcarea din vant pana la Clasa C1/B2



Tightness against driving rain - unprotected (A) up to
 Schlagregendichtheit - Ungeschützt (A) bis
 Tenuta all'acqua metodo di prova A fino a
 Etanșeitatea la apă expunere directă pana la 5A



Air permeability up to
 Luftdurchlässigkeit bis
 Tenuta all'aria fino a
 Permeabilitatea aerului pana la Clasa 4

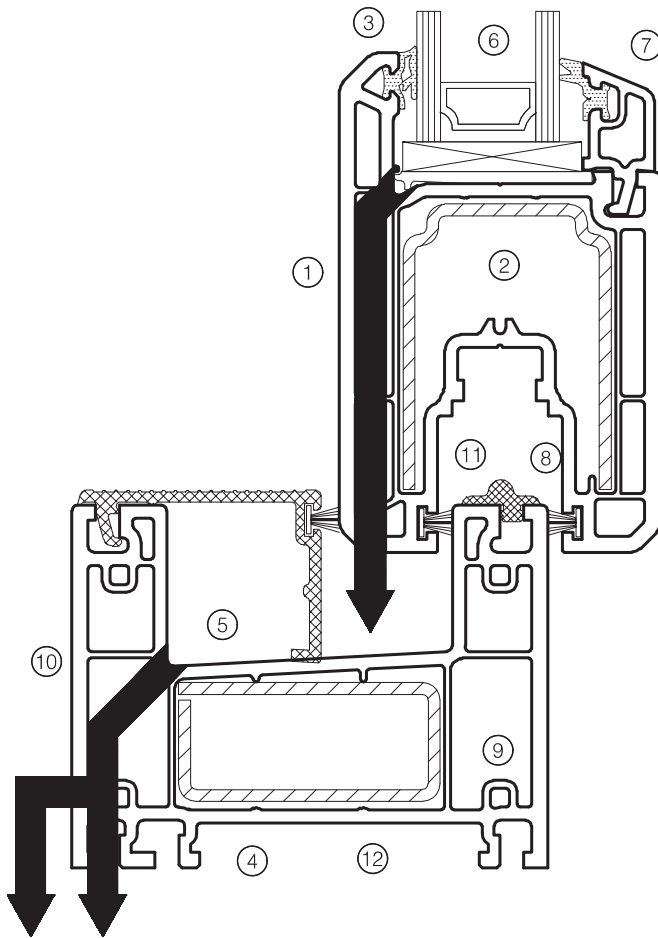


Sound insulation up to
 Schallschutz bis
 L'isolamento acustico fino a
 Izolare acustică pana la 36 dB



Burglar-resistant up to
 Einbruchhemmung bis
 Resistenza antieffrazione fino a
 Rezistentă antifracție pana la RC 1 (WK 1)

System features / Systemmerkmale / Caratteristiche del sistema / Caracteristici Sistem



ENG

1. Three chamber profile cross section with 54 mm building depth
2. Large scale steel reinforcements with high static properties and precision fit in hardware
3. Preinstalled brush pile and coextruded PCE glazing gasket
4. Compatible with all 70 mm standard systems and add-on box
5. Special sealing elements for efficient sealing
6. For diverse glass thicknesses up to 28 mm
7. Backset glazing bead with shortened coextruded gasket for enhanced visual appeal and easier cleaning
8. Support lobes position the steel reinforcement and secure it at a distance as a measure to counteract heat transfer.
9. Concealed casement screw unions in preformed receivers
10. The outer frame art. no. 6052 can be welded or connected mechanically.
11. A track variant facilitates barrier-free building.
12. Perfectly prepared building connection. Existing couplings, extensions, and other ancillary parts can be used without problems

GER

1. 3 Kammer Profilquerschnitt mit 54 mm Bautiefe
2. Großdimensionierte Stahlarmierungen mit hoher Statik und passgenauem Einsatz der Beschlagteile.
3. Ab Werk integrierte Bürstendichtung sowie einextrudierte PCE Verglasungsdichtung
4. Kompatibel mit allen 70mm Standardsystemen und Aufsatzkasten
5. Spezielle Dichtteile für effiziente Abdichtung.
6. Einsatz unterschiedlicher Glasdicken bis zu 28 mm.
7. Zurückversetzte Glasleiste für schönere Optik und leichtere Reinigung.
8. Stütznocken positionieren die Stahlarmierung und halten sie auf Abstand um Wärmeübertragung zu erschweren.
9. Verdecktliegende Verschraubung der Zarge in vorgeformte Aufnahmen.
10. Der Blendrahmen Art.-Nr. 6052 kann verschweißt oder mechanisch verbunden werden.
11. Durch Einsatz einer Laufschienenvariante ist barrierefreies Bauen möglich.
12. Bautechnisch perfekt vorbereiteter Anschluss. Bestehende Kopplungen, Verbreiterungen und andere Zubehörteile sind problemlos nutzbar

IT

1. Sistema tricamerale profondità anta 54 mm
2. Rinforzi in acciaio per una statica eccezionale
3. Guarnizioni spazzolino
4. Compatibile con tutti sistemi Trocal, profondità telaio 70 mm.
5. Protezione speciale
6. Possibilità di vetraggio, fino a 28 mm
7. Fermavetro necoplanare piu elegante e piu facile da pulire
8. Dei denti di supporto posizionano il rinforzo in acciaio e la mantengono alla giusta distanza per impedire il più possibile il trasferimento di calore
9. Canale nascosto di fissaggio con viti
10. Telaio con possibilita di fissaggio meccanico o saldatura
11. Guide applicati che permettono ottenere un ottimo coefficiente termico
12. Profili d'accoppiamento e allargatori possono utilizzarsi senza problemi.

ROM

1. Sistem tricameral si adâncime constructivă de 54 mm.
2. Armături supradimensionate pentru o statică de excepție
3. Sistem de etanșare cu perii premontate pe profil
4. Compatibilitate cu toate sistemele Trocal cu adâncime constructivă de 70 mm
5. Element de protecție special pentru o etanșare eficientă
6. Posibilitate de montare a geamului termoizolant cu grosime de până la 28 mm
7. Bagheta de fixare a geamului înclinată pentru un aspect estetic elegant și o întreținere ușoară
8. Nervuri de ghidare a armaturii pentru poziționarea într-o manieră ce asigură un transfer termic optim
9. Canal ascuns de fixare a șuruburilor de prindere
10. Toc cu posibilitate de fixare mecanică sau prin sudură
11. Cale de rulare aplicată ce permite obținerea unui coeficient de transfer termic optim
12. Gamă largă de cuplaje, extensii și profile auxiliare ce pot fi utilizate fără problemă

Color program / Dekorübersicht / Programma Colori / Program culori

Dekore Pellicola Folie	Color shades Farbbezeichnung Colore Denumire culoare	Laminated		Suport material Trägermaterial Colore Massa Material Bază	Renolit code Renolit Code Codice Renolit Cod Renolit	Gasket Dichtung Guarnizione Garnitura
		ext	int			
Wood grain / Holzdekore / Effetto Legno / Imitatie Lemn	Sheffield Oak Light	x	x	braun	F456-3081	gray
	Sheffield Oak Grey	x	x	braun	F436-3086	gray
	Eiche Natur	x	x	braun	9.03118076-116800	gray
	Bergkiefer	x	x	braun	9.3069041-116700	gray
	Oregon	x	x	braun	9.1192001-116700	gray
	Streifen-Douglasie	x	x	braun	9.3152009-116700	gray
	Winchester XA	x	x	braun	9.0049240-114800	gray
	Golden Oak	x	x	braun	9.2178001-116700	black
	Soft Cherry	x	x	braun	9.3214009-119500	gray
	Siena PR	x	x	braun	9.0049233-114800	gray
	Siena PN	x	x	braun	9.0049237-114800	black
	Nussbaum V	x	x	braun	9.2178007-116700	black
	Eiche Dunkel FL-F1	x	x	braun	9.2052089-116700	black
	Mooreiche ST-F	x	x	braun	9.3167004-116700	black
	Macore	x	x	braun	9.3162002-116700	black
	Sapeli	x	x	braun	9.2065021-116700	black
	Black Cherry	x	x	braun	9.3202001-116700	black
	Desert Oak	x	x	braun	2.0057.004-130300	black
	Mountain Oak	x	x	braun	2.0057.006-130300	black
Single Colors / Uni -Farben / Uni-culore / Culori Uni	Crystal White Ash	x	x	white	47 852-117900	gray
	Cremeweiss	x	x	white	02.20.11.000001-116700	gray
	Lichtgrau 7251	x	x	white	725105-116700	gray
	Grau 7155	x	x	white	715505-116700	gray
	Basaltgrau 7012	x	x	white	701205-116700	gray
	Anthrazitgrau	x	x	white	701605-116700	black
	Anthrazitgrau 7016 Glatt	x	x	white	701605-808300	black
	Dunkelrot 3081	x	x	white	308105-116700	black
	Winerot 3005	x	x	white	300505-116700	black
	Moosgrun 6005	x	x	white	600505-116700	black
	Dunkelgrun 6125	x	x	white	612505-116700	black
	Schwarzbraun 8518	x	x	white	851805-116700	black
	Metbrush Aluminium	x	x	white	F436-1001	gray
	Metbrush Messing	x	x	white	F436-1007	gray

istituto sperimentale per l'edilizia s.p.a.

ISTEDIL

SEDE LEGALE - UFFICI E LABORATORI: 00012 Guidonia M. (Roma) Loc. Setteville - Via Tiburtina Km 18,300 - Tel. 0774/353580 r.a. - Fax 0774/353762
 PERUGIA - 06132 S. Sisto Loc. S. Andrea delle Fratte - Via P. Soriano, 5/e - Tel. 075/5271717 - Fax 075/5271705
 LATINA SCALO - 04013 Loc. Tor Tre Ponti - Via Carrara, 12/a - Tel. 0773/630217 - Tel. e Fax 0773/630137
 SASSARI - 07100 Loc. Predda Niedda - Strada 25 - Tel. 079/262399 - Tel. e Fax 079/260581

www.istedil.it
e-mail: info@istedil.it

DIRETTIVA PRODOTTI DA COSTRUZIONE 89/106 - Laboratorio notificato CEE n. 0529 per prove su "Finestre e porte esterne pedonali (UNI EN 14351-1)"

RAPPORTO DI PROVA n° 818/2010-ZL

Guidonia M., 26/05/2010

Risultato del calcolo della trasmittanza termica lineare di un telaio per serramenti eseguito il giorno 26/05/2010 con metodo numerico.

Le caratteristiche geometriche e strutturali del telaio sono riportate nel disegno allegato, fornito dal Committente, che costituisce parte integrante del presente rapporto di prova.

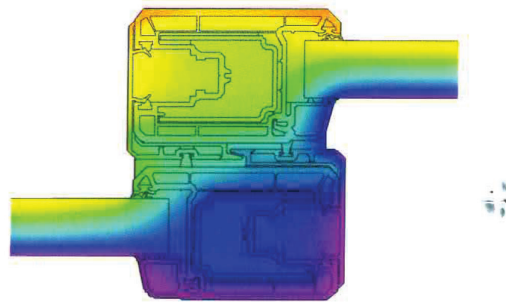
COMMITTENTE : PROFINE ITALIA s.r.l. - Bosaro (RO)

DATI DICHIARATI

Denominazione : PROFINE 6041 6061
 Struttura telaio : PVC

Conducibilità termica dei materiali ed emissività delle cavità presenti:

Materiale	λ [W/(m·K)]
■ ALLUMINIO	160,000
■ Acciaio (1)	50,000
■ CAVITA ESTERNE Eps. 0.9	Eps=0,9/0,9
■ CAVITA INTERNE Eps. 0.9	Eps=0,9/0,9
■ Mohair rivestito di poliestre	0,140
■ PVC	0,170
■ PVC Morbido	0,130
■ Pannello ISOLANTE	0,035



MODALITA' DI PROVA

Normativa di riferimento : UNI EN ISO 10077-2
 Programma di calcolo : FLIXO 6.00.492.1

RISULTATO DELLA MISURA

FLIXO data file : 6041_6061.flx

TRASMITTANZA TERMICA DEL TELAIO (UNI EN ISO 10077-2)

$$U_{fA,B} = \frac{\Phi}{\Delta T} = \frac{U_{p1} \cdot b_{p1} + U_{p2} \cdot b_{p2}}{b_f} = \frac{13,567}{20,000} = 1,209 \cdot 0,203 + 1,209 \cdot 0,203 = 2,12 \text{ W/(m}^2 \cdot \text{K)}$$

1 / 3

E' vietata la riproduzione parziale del Rapporto senza il consenso scritto dell'Istituto

Elementklassifizierung
Fenster nach EN 14351-1



Construction Product Service
BRAUNSCHWEIG

Dokumentnummer: C 09-KB-001-04-MPA-BS

Auftraggeber: Profine GmbH
International Profile Group
Zweibrücker Straße 200
66954 Pirmasens

Projektnummer: C003/008/08

System: PremiLine

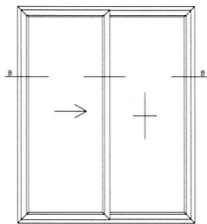
Elementausführung: 2-teilige Schiebetür mit festen und beweglichen Flügel

Elementaußenmaß (BxH): 1986 mm x 2470 mm

Profilkombination / Material: 6050 / 6041L PVC - U

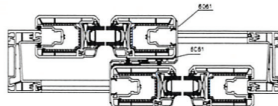
Grundlage: Produktnorm EN 14351-1:2006

Zeichnung **Leistungseigenschaften** **Klasse / Wert**



Widerstandsfähigkeit: **C1, B2**
bei Windlast nach EN 12210

Schlagregendichtheit: **5A**
nach EN 12208



Luftdurchlässigkeit: **4**
nach EN 12207

Braunschweig den 11.03.2009

A. Gutsch
Dr.-Ing. A. Gutsch
Leiter der Prüfstelle



H. Trenkler
i.A. Dipl.-Ing. H. Trenkler
Prüffeld CPS

Hinweise:
Dieses Dokument ist eine Zusammenfassung der Werte und Klassen, die durch Einzelprüfungen, Berechnungen oder Bewertungen nach EN 14351-1:2006 bei der MPA Braunschweig und dem Fraunhofer WKI oder in deren Auftrag ermittelt wurden und sich ausschließlich auf die geprüfte Probekörperausführung beziehen. Sofern nicht anders beschrieben, ist der Anwendungsbereich dieser Ergebnisse entsprechend der EN 14351-1:2006 zu bestimmen. Die Gültigkeitsdauer ist unbegrenzt, sofern sich die Normen und das Produkt nicht ändern. Es sind die nationalen baurechtlichen Bestimmungen zu beachten. Diese Elementklassifizierung umfasst 9 Seiten.

Materialprüfanstalt (MPA)
für das Bauwesen - CPS
Beethovenstraße 52
D-38106 Braunschweig
Fon +49 (0)531-391-8284
Fax +49 (0)531-391-5900

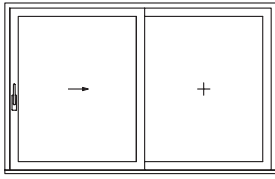
Norddeutsche LB Hannover
106 020 050 BLZ 250 500 00
Swift-Code: NOLADE 2H
USt.-ID-Nr. DE183500654
Steuer-Nr.: 14/201/22859
IBAN: DE5825050000106020050

info@cps-bs.de
www.cps-bs.de

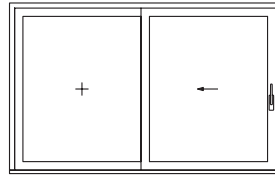
CPS Braunschweig ist eine Kooperation der
MPA Braunschweig (NB 0761) und des
Fraunhofer WKI (NB 0765)



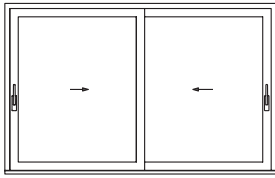
Types of Openings / Öffnungsarten / Tipologie aperture / Tipologie deschideri



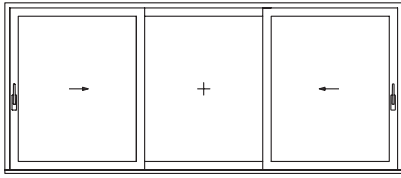
1 Fixed pane, 1 Sliding sash
1 Schiebeflügel 1 Festverglasung
1 Porta scorrevole 1 Telaio fisso
1 Cercevea glisantă 1 Ramă fixă



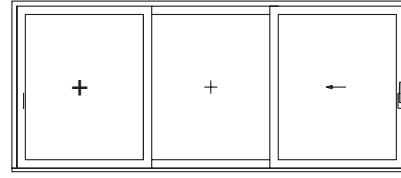
1 Fixed pane, 1 Sliding sash
1 Schiebeflügel 1 Festverglasung
1 Porta scorrevole 1 Telaio fisso
1 Cercevea glisantă 1 Ramă fixă



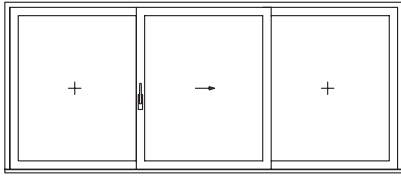
2 Sliding sashes
2 Schiebeflügel
2 Porte scorrevole
2 Cercevele glisante



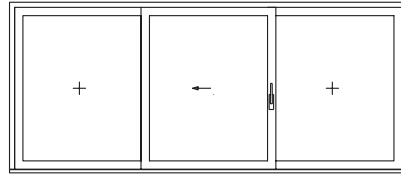
2 Sliding sashes 1 Fixed pane
1 Schiebeflügel 1 Festverglasung
2 Porte scorrevole 1 Telaio fisso
2 Cercevele glisante 1 Ramă fixă



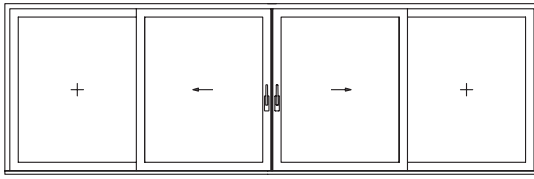
2 Fixed pane, 1 Sliding sash
1 Schiebeflügel 2 Festverglasung
1 Porta scorrevole 2 Telai fissi
1 Cercevea glisantă 2 Rame fixe



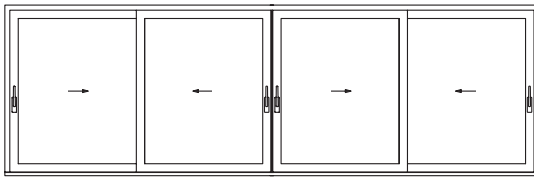
2 Fixed panes, 1 Sliding sash
1 Schiebeflügel 2 Festverglasung
1 Porta scorrevole 2 Telai fissi
1 Cercevea glisantă 2 Rame fixe



2 Fixed panes, 1 Sliding sash
1 Schiebeflügel 2 Festverglasung
1 Porta scorrevole 2 Telai fissi
1 Cercevea glisantă 2 Rame fixe

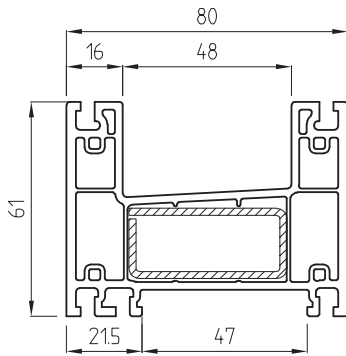


2 Fixed panes, 2 Sliding sashes
2 Schiebeflügel 2 Festverglasung
2 Porte scorrevole 2 Telai fissi
2 Cercevele glisante 2 Rame fixe

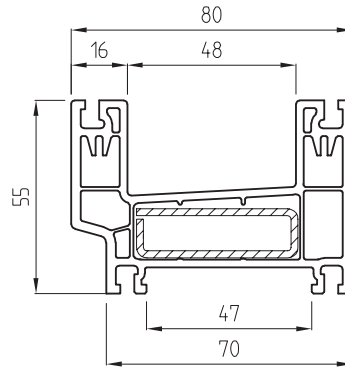


4 Sliding sashes
4 Schiebeflügel
4 Porte scorrevole
4 Cercevele glisante

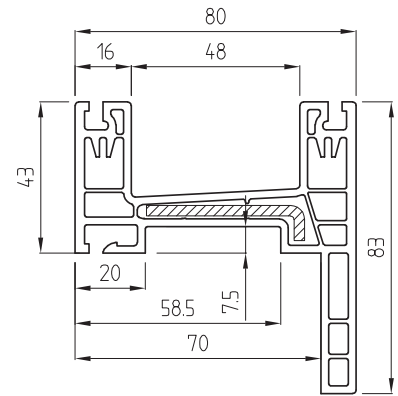
Main profiles / Hauptprofil / Profili base / Profile principale



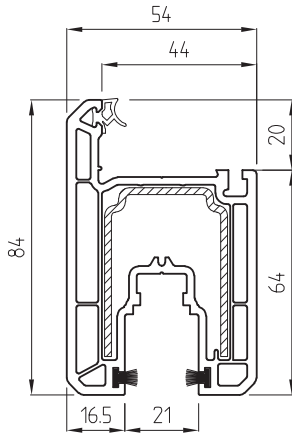
Profile: 6052
Steel V 107
44x20- 2mm



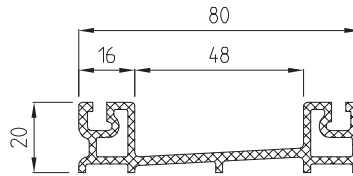
Profile: 6054
Steel V 109
46x14- 2mm



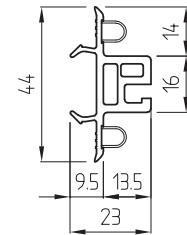
Profile: 6051
Steel V 110
45x10- 3 mm



Profile: 6041
Steel V 106
35x48- 2mm



Profile: 9C66



Profile: 6067

PERFORMER 74

RONDO

STYLE 76

PASIV 82

KUBUS

PREMIDOOR 76

PREMIDOOR 88

PREMILINE

BESCHLÄG
HARDWARE

GLAS
GLASS

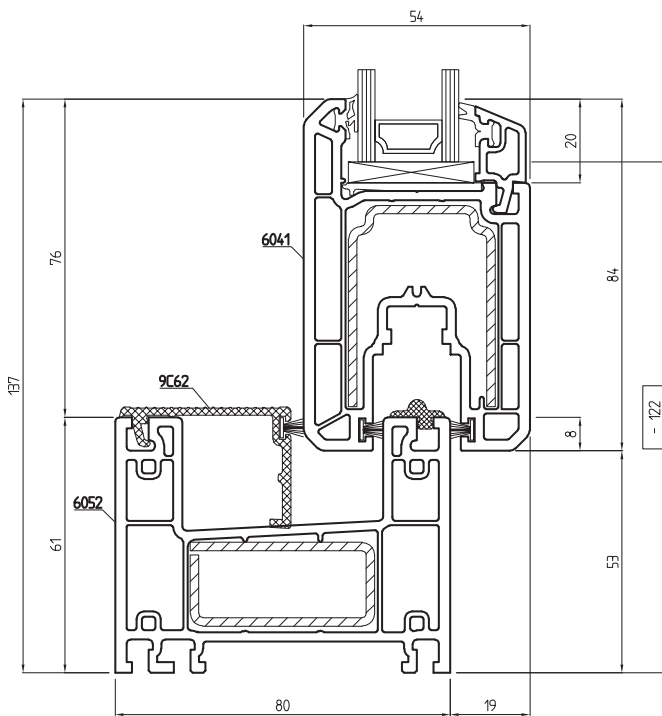
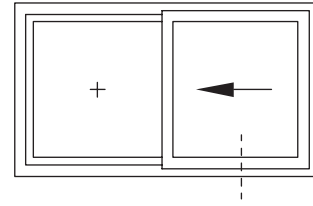
ROLLO TOP

ROLLO FRONT

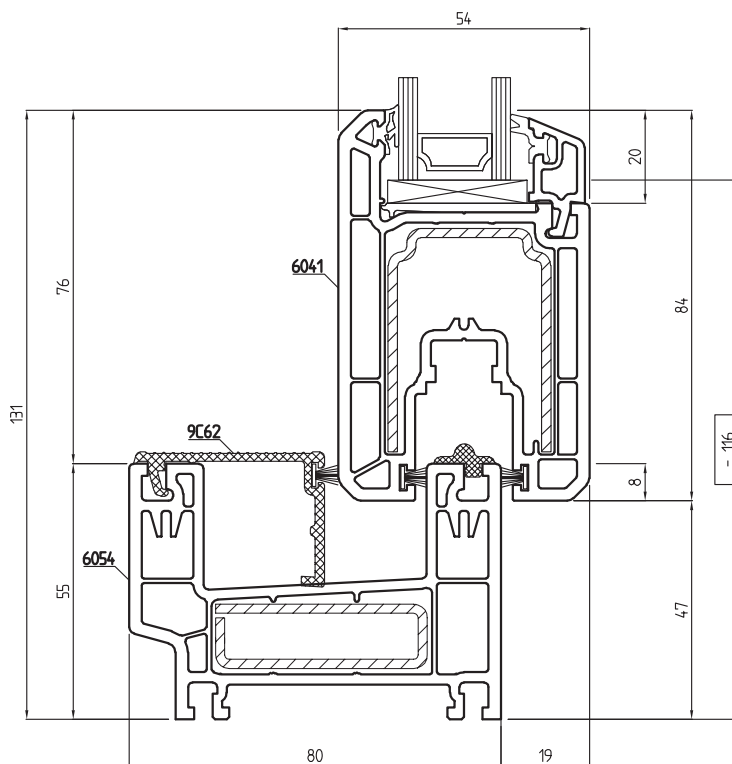
BORA

HERCULES 70

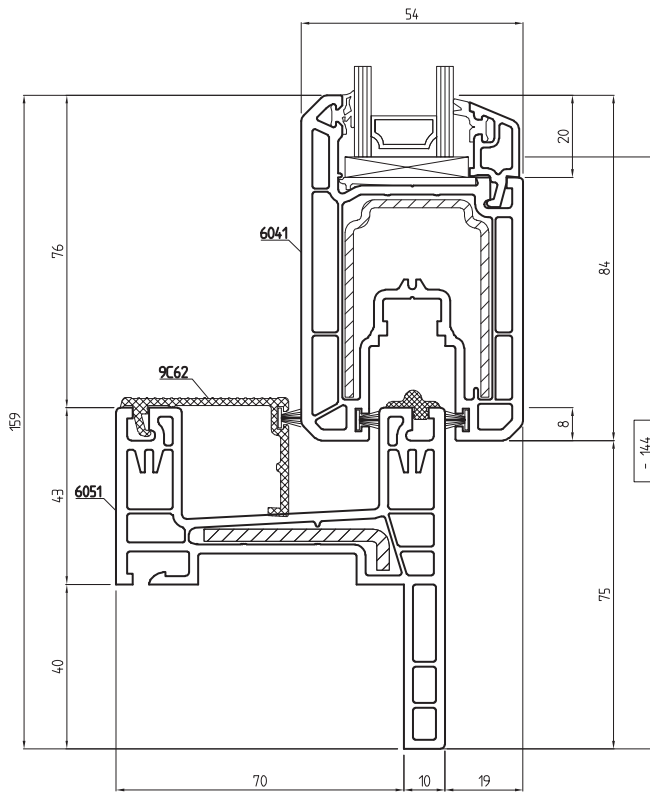
Outer frame and sash combination / Blendrahmen-Flügel-Kombination / Combinazione
Telaio-Anta / Combinație Toc-Cercevea



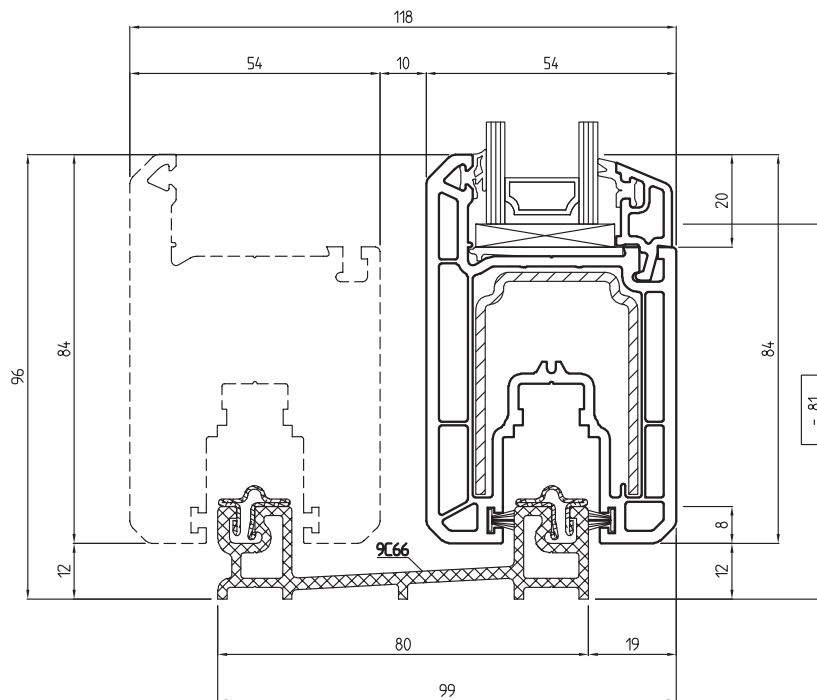
Frame	6052	I _x =5,3 cm ⁴
Steel	V 107 44x20 t = 2 mm	
Sash	6041	
Steel	V 106 36x48 t = 2 mm	I _x =5,3 cm ⁴



Frame	6054	I _x =4,8 cm ⁴
Steel	V 109 46x14 t = 2 mm	
Sash	6041	I _x =5,3 cm ⁴
Steel	V 106 36x48 t = 2 mm	

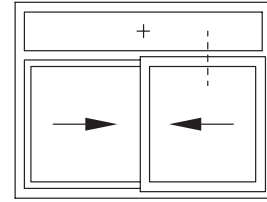
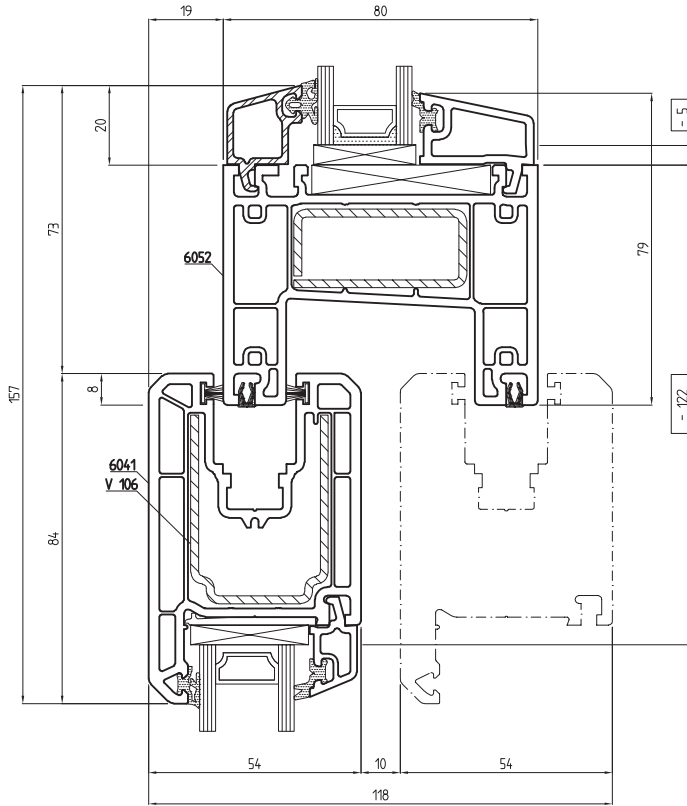


Frame	6051	
Steel	V 110	$I_x=3,0 \text{ cm}^4$
	45x10	
	t = 3 mm	
Sash	6041	
Steel	V 106	$I_x=5,3 \text{ cm}^4$
	36x48	
	t = 2 mm	

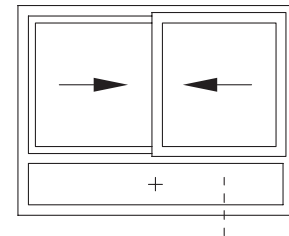
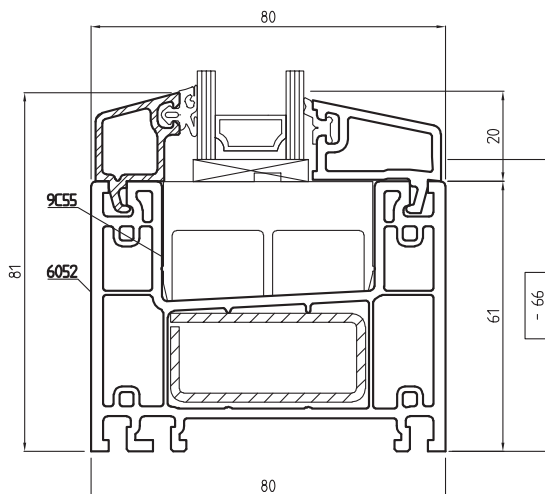


Threshold	9C66	
Sash	6041	
Steel	V 106	$I_x=5,3 \text{ cm}^4$
	36x48	
	t = 2 mm	

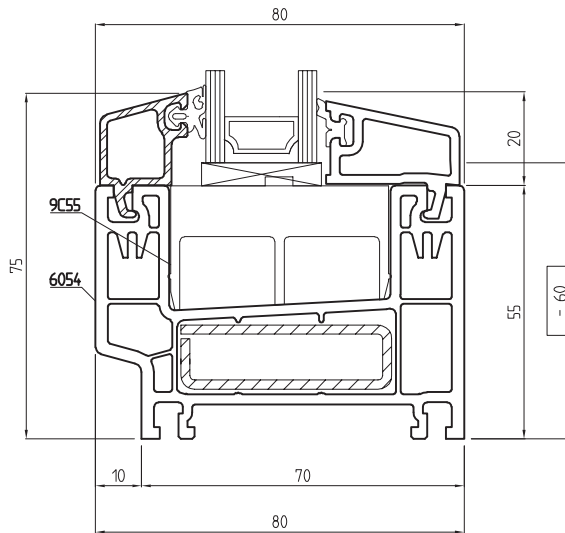
Fixed-moving combination / Fest-Bewegend-Kombination / Fisso-Scorrevole combinazione /
Combinatie Fix – Mobil



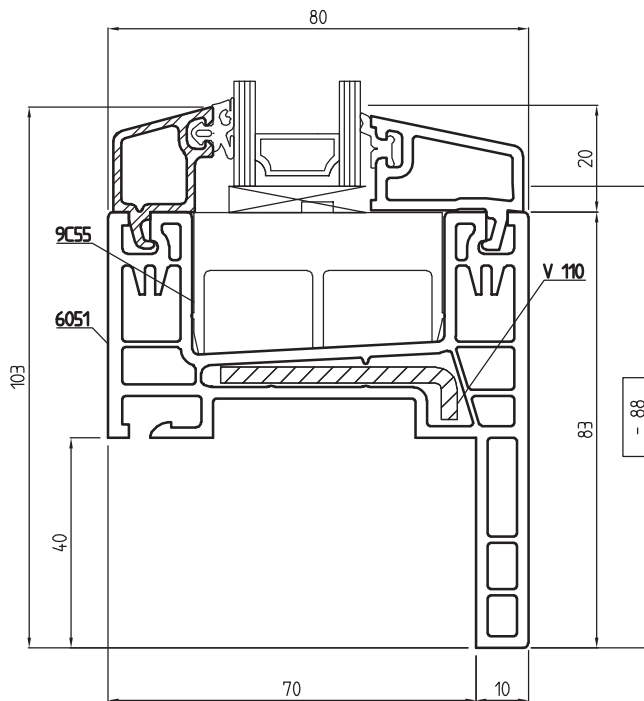
Transom	6052	
Steel	V 107	$I_x=5,3 \text{ cm}^4$
	44x20	
	t = 2 mm	
Sash	6041	
Steel	V 106	$I_x=5,3 \text{ cm}^4$
	36x48	
	t = 2 mm	



Frame	6052	
Steel	V 107	$I_x=5,3 \text{ cm}^4$
	44x20	
	t = 2 mm	

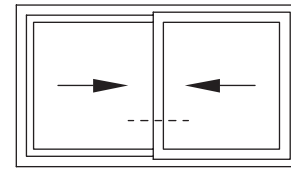
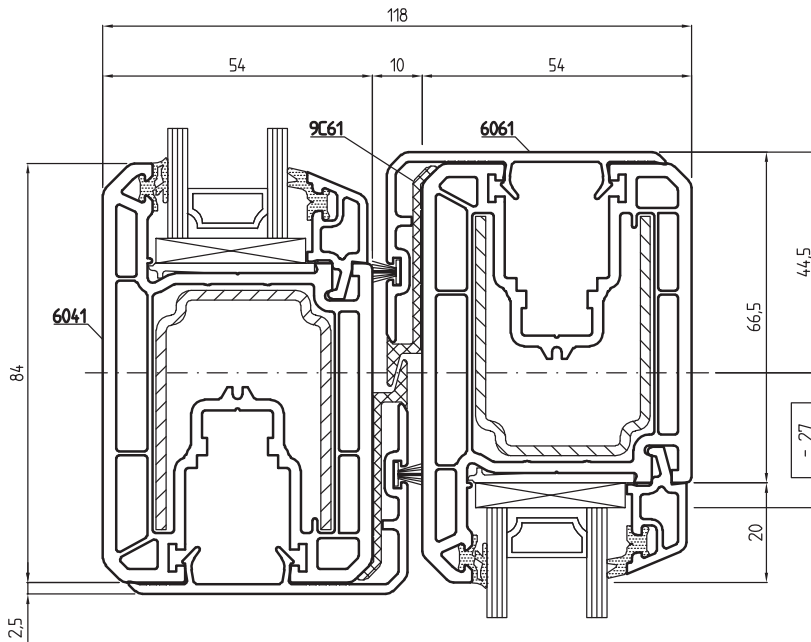


Frame	6054	$I_x=4,8 \text{ cm}^4$
Steel	V 109	
	46x14 t = 2 mm	



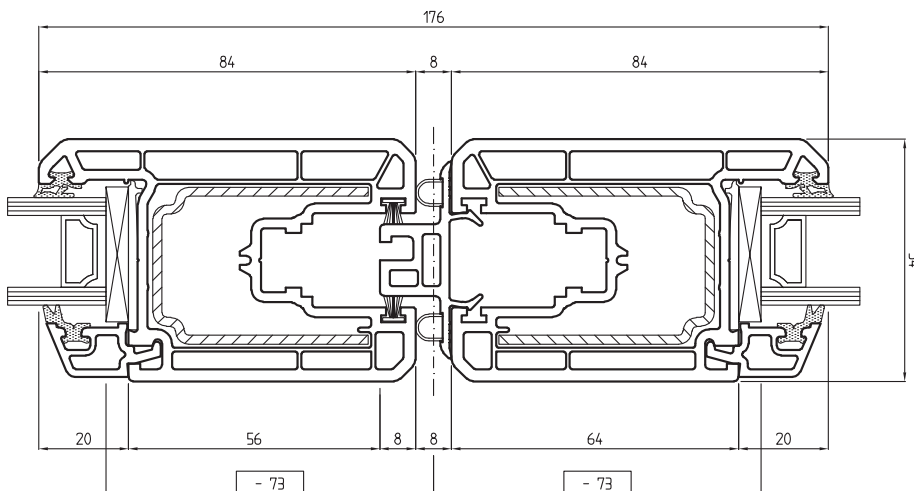
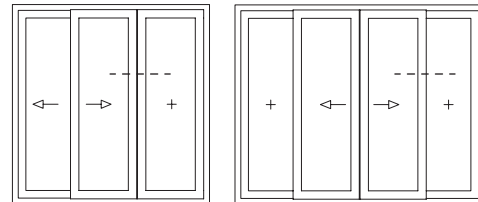
Frame	6051	$I_x=3,0 \text{ cm}^4$
Steel	V 110	
	45x10 t = 3 mm	

Intellock Sash combination / Interlock Flügel-Kombination / *Combinazione Interlock Anta* /
Combinatie Interlock cercevea



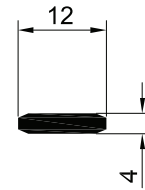
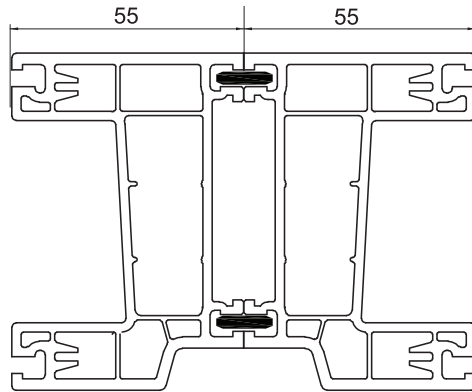
Frame	6041	$I_x=5,3 \text{ cm}^4$
Steel	V 106	
	36x48	
	t = 2 mm	

Floating mullion and sash combination / Stulp-Flügel-Kombination / *Battuta Centrale - Anta Combinazione* / Combinatie Ștulp-Cercevea



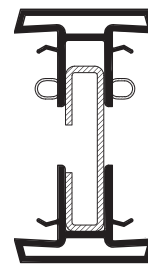
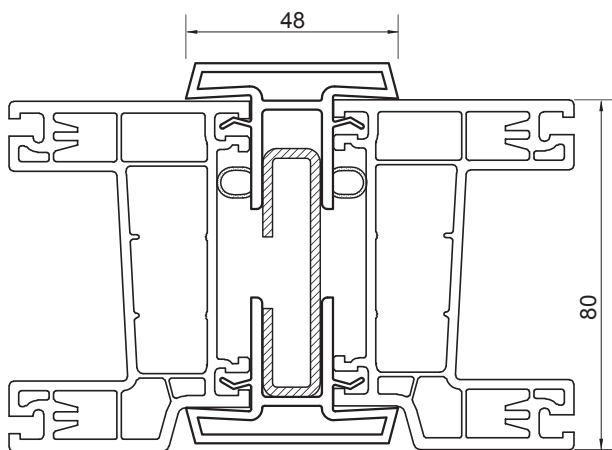
Frame	6041	$I_x=5,3 \text{ cm}^4$
Steel	V 106	
	36x48	
	t = 2 mm	

Coupling profiles / Kopplungsprofile / *Profili di accoppiamento* / Profile de cuplare



500730

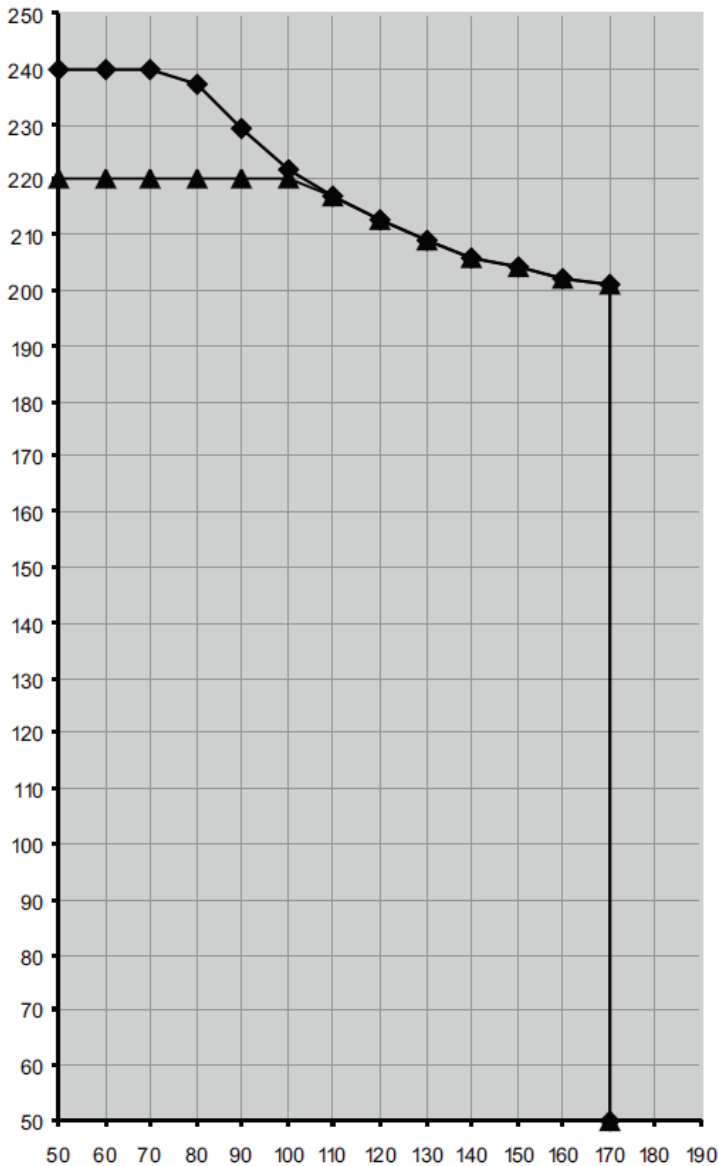
Coupling profile gasket / Kopplungs dichtung
Guarnizione giunto / Garnitura de cuplare



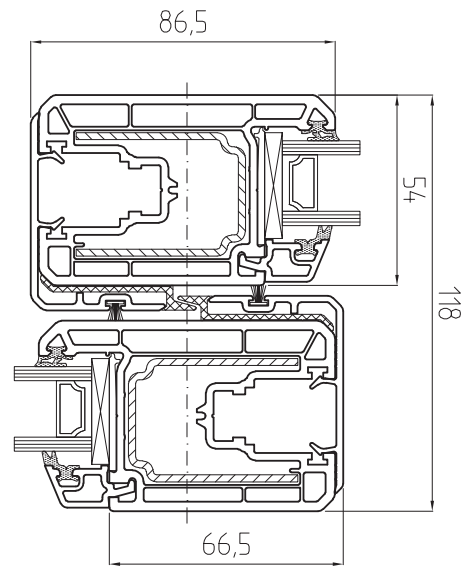
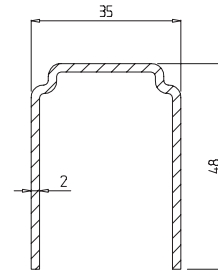
943940
Steel 940108
 $I_x=8,4 \text{ cm}^4$

PERFORMER 74
RONDO
STYLE 76
PASIV 82
KUBUS
PREMIDOOR 76
PREMIDOOR 88
PREMILINE
BESCHLÄG
HARDWARE
GLAS
GLASS
ROLLO TOP
ROLLO FRONT
BORA
HERCULES 70

Maximus Sash Sizes / Flügelgrößen Diagramme / *Campi d'applicazione Anta* /
Dimensiuni maxime cercevea



Steel V106 $I_x=5,3 \text{ cm}^4$
36x48
t=2mm



Sash 6041

Windlast: 0,8 kN/m²

◆ weiß
▲ Dekor

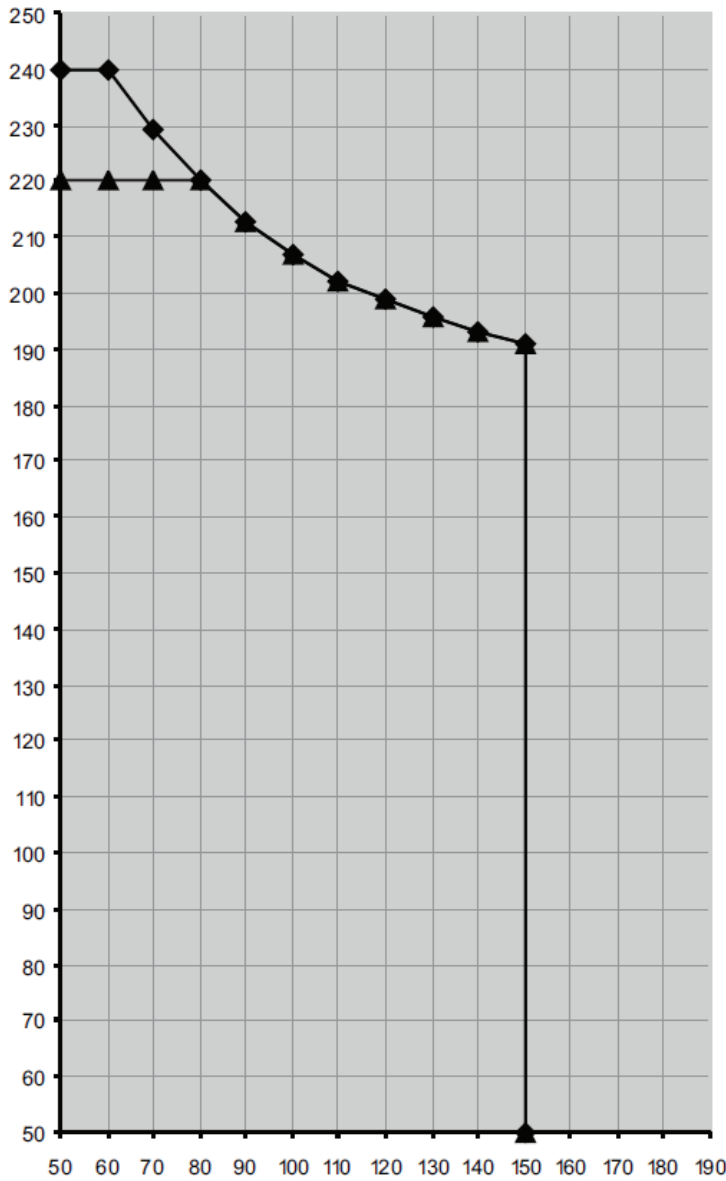
Maximum outerframe size / Maximales Blendrahmenaußenmaß / *Dimensione massima del telaio* /
Dimensiune Maxima Toc:

White Profiles / Weiss Profile / *Profili Bianco* / Profile Albe
Color Profiles / Dekor Profile / *Profili Pellicolati* / Profile Color

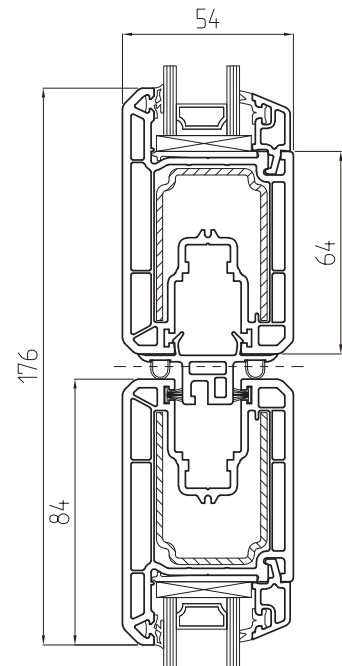
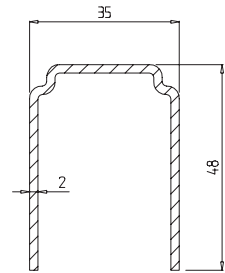
4500 x 2500 mm
3500 x 2300 mm

Maximum Sash Weight 120 kg
Flügelgewicht bis 120 kg
Peso Anta fino a 120 kg
Greutate maximă cercevea 120 kg

Maximus Sash Sizes / Flügelgrößen Diagramme / Campi d'applicazione Anta /
Dimensiuni maxime cercevea



Steel V106 $I_x=5,3 \text{ cm}^4$
36x48
t=2mm



Windlast: 0,8 kN/m²

- ◆ weiß
- ▲ Dekor

Maximum outerframe size / Maximales Blendrahmenaußenmaß / Dimensione massima del telaio /
Dimensiune Maxima Toc:

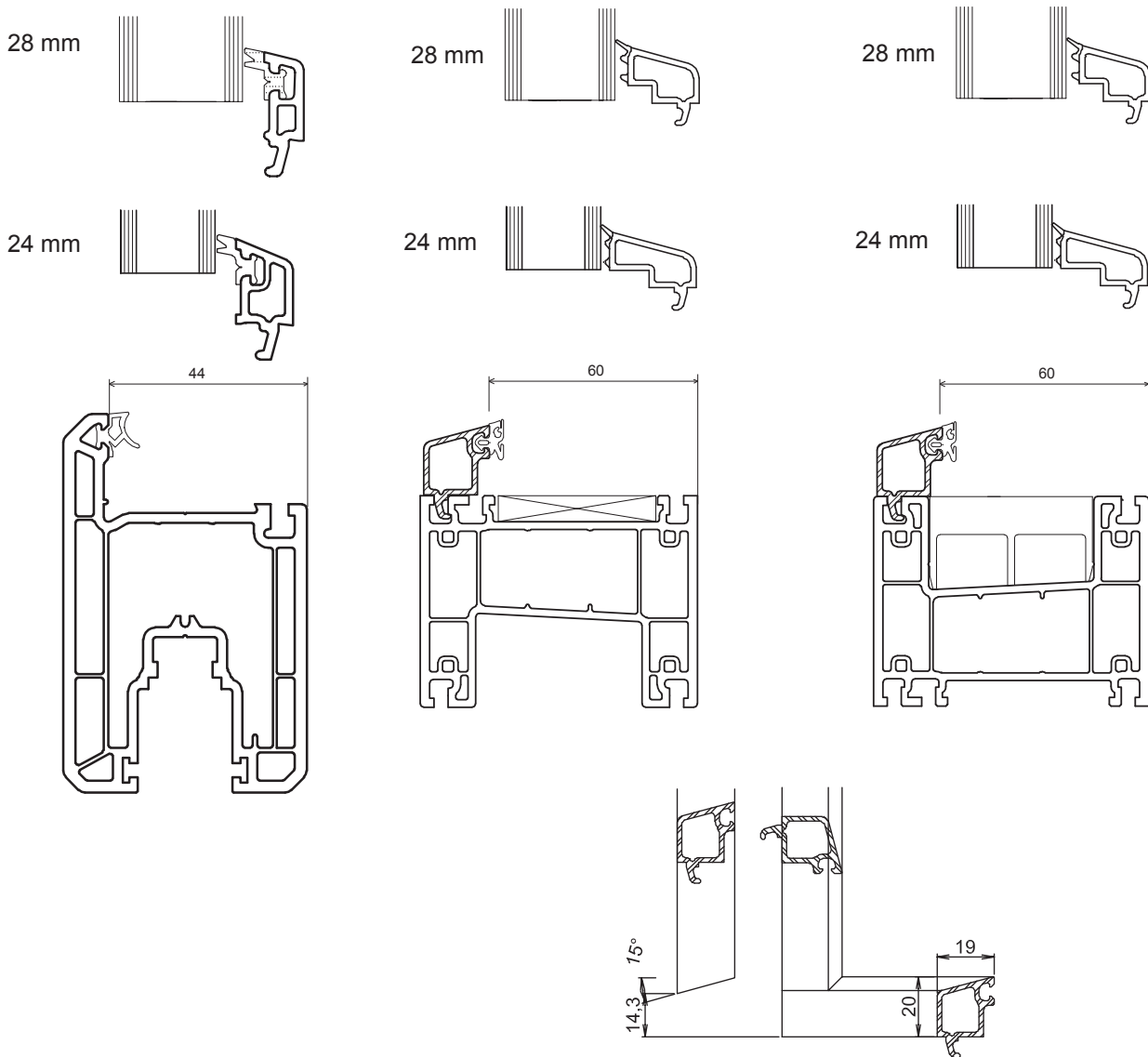
White Profiles / Weiss Profile / Profili Bianco / Profile Albe
Color Profiles / Dekor Profile / Profili Pellicolati / Profile Color





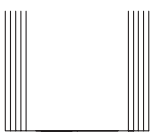

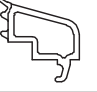
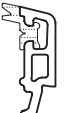
4500 x 2500 mm
3500 x 2300 mm

Maximum Sash Weight 120 kg
Flügelgewicht bis 120 kg
Peso Anta fino a 120 kg
Greutate maximă cercevea 120 kg

PERFORMER 74
RONDO
STYLE 76
PASIV 82
KUBUS
PREMIDOOR 76
PREMIDOOR 88
PREMILINE
BESCHLÄG
HARDWARE
GLASS
GLASS
ROLLO TOP
ROLLO FRONT
BORA
HERCULES 70

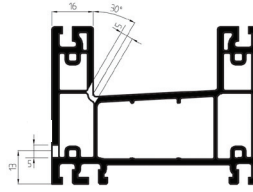
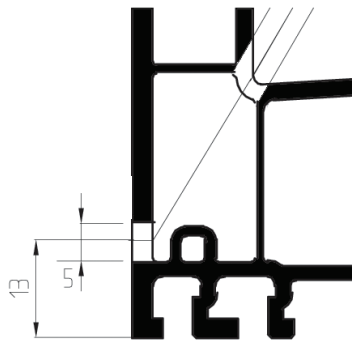
Glazing Beads / Glasleiste / Fermavetri /
Baghete de fixare geam



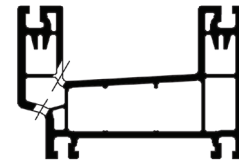
Profile	Glass / Glas / Vetro / Sticlă	Glazing bead / Glasleiste / Fermavetro / Baghetă	Gasket / Dichtung / Guarnizione / Garnitură
Frame 6052	 24 mm	 9C00 +  2437	black or gray
Sash 6041		 012.04	
Frame 6054, 6052, 6051	 28 mm	 9C00 +  2435	black
Sash 6041		 008.04	

Drainage / Entwässerung / Drenaggio / Drenajul

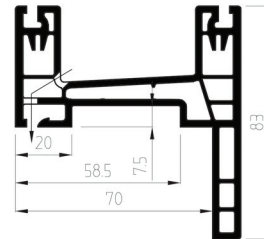
Front drainage / Entwässerung nach vorne / Drenaggio frontale / Drenaj frontal



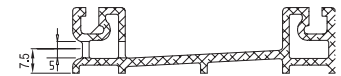
Profile 6052



Profile 6054

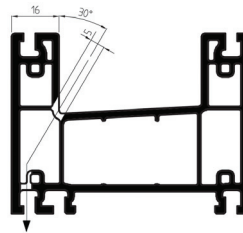
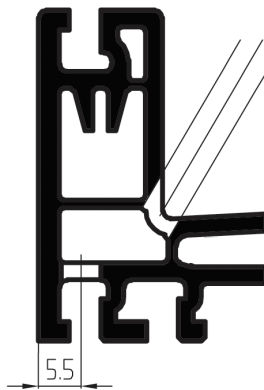


Profile 6051

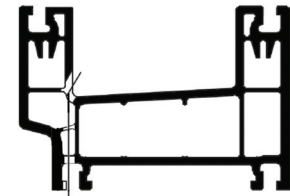


Profile 9C66

Hidden drainage / Entwässerung nach unten / Drenaggio nascosto / Drenaj inferior



Profile 6052



Profile 6054

Ventilation / Entlüftung / Ventilazione / Ventilarea

Sash

- ① slots 5 x 25 mm for equalizing the pressure at the upper part of the sash, positioned at 50 -100 mm from the corner;
- ② slots 5 x 25 mm for equalizing the pressure upper part of the sash positioned at 50 -100 mm from the corner;
- ③ slots 5 x 25 mm for drainage/equalizing the pressure at the lower part of the sash, positioned at 50 -100 mm from the corner;
- ④ slots 5 x 25 mm for drainage/ equalizing the pressure at lower part of the sash positioned at 50 -100 mm from the corner;

