



Halfway Pond, Plymouth

General Information

Halfway Pond is a 233 acre great pond with an average depth of 10 feet and a maximum depth of 15 feet. Transparency is good at 10 feet. There are almost three miles of shoreline, only lightly developed. The bottom is primarily sand and vegetation is common on the eastern side of the island. Halfway Pond is supplied with water by groundwater, a small stream in the northwest corner, and reportedly a pipe to Long Pond. Halfway Pond serves as the headwaters for the Agawam River and is also used as a water source for cranberry bogs.

Recreational Access

Access to Halfway Pond is provided by the Wildlands Trust of Southeastern Massachusetts and can be located on the western shore of the pond off of Mast Road (70°37'25.11"W 41°51'23.06"N). Parking is limited to just two or three cars, and boaters will have to stick with canoes and other cartop craft. However substantial amounts of shoreline are open to fishing. The island in the middle of the pond is a research preserve owned by the Nature Conservancy and is open only by prior permission. Please contact MassWildlife for additional information and/or restrictions pertaining to public access of Halfway Pond.

Fish Populations

The following fish species were found during MassWildlife surveys: Largemouth Bass, Smallmouth Bass, Yellow Perch, White Perch, Pumpkinseed, Bluegill, Chain Pickerel, Alewife, White Sucker, Golden Shiner, Banded Killifish, Tessellated Darter, Fallfish, and American Eel.

Fishing

While Smallmouth Bass are still found in good numbers in Halfway Pond, the dominant black bass species now appears to be the Largemouth Bass. The most recent survey found some nice sized Largemouth Bass along with large White Perch and Yellow Perch and a few nice Smallmouth Bass. Panfish such as Bluegill and Pumpkinseed are also plentiful.

Halfway Pond has produced Black Crappie, Largemouth Bass, Chain Pickerel, Yellow Perch, Smallmouth Bass, Sunfish and Brown Bullhead that meet minimum sizes for recognition by the Freshwater Sportfishing Awards Program.

Useful Links:

[Get your Fishing License](#)

[Freshwater Fishing](#)

[Trout Stocking Information](#)

[Freshwater Sportfishing Awards Program](#)

Learn more:

[Mass.gov/MassWildlife](https://www.mass.gov/MassWildlife)

Connect with us:

[Facebook.com/MassWildlife](https://www.facebook.com/MassWildlife)

Your local

MassWildlife office:

195 Bournedale Road
Buzzards Bay, MA 02532
(508) 759-3406

STOP AQUATIC HITCHIKERS!

Prevent the transport of nuisance species.
Clean all recreational equipment.
ProtectYourWaters.net

Updated: 2019



Halfway Pond

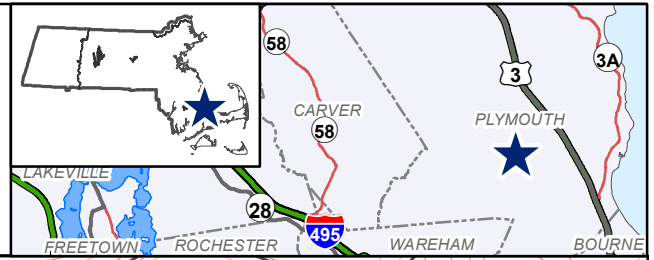
233 Acres

Plymouth

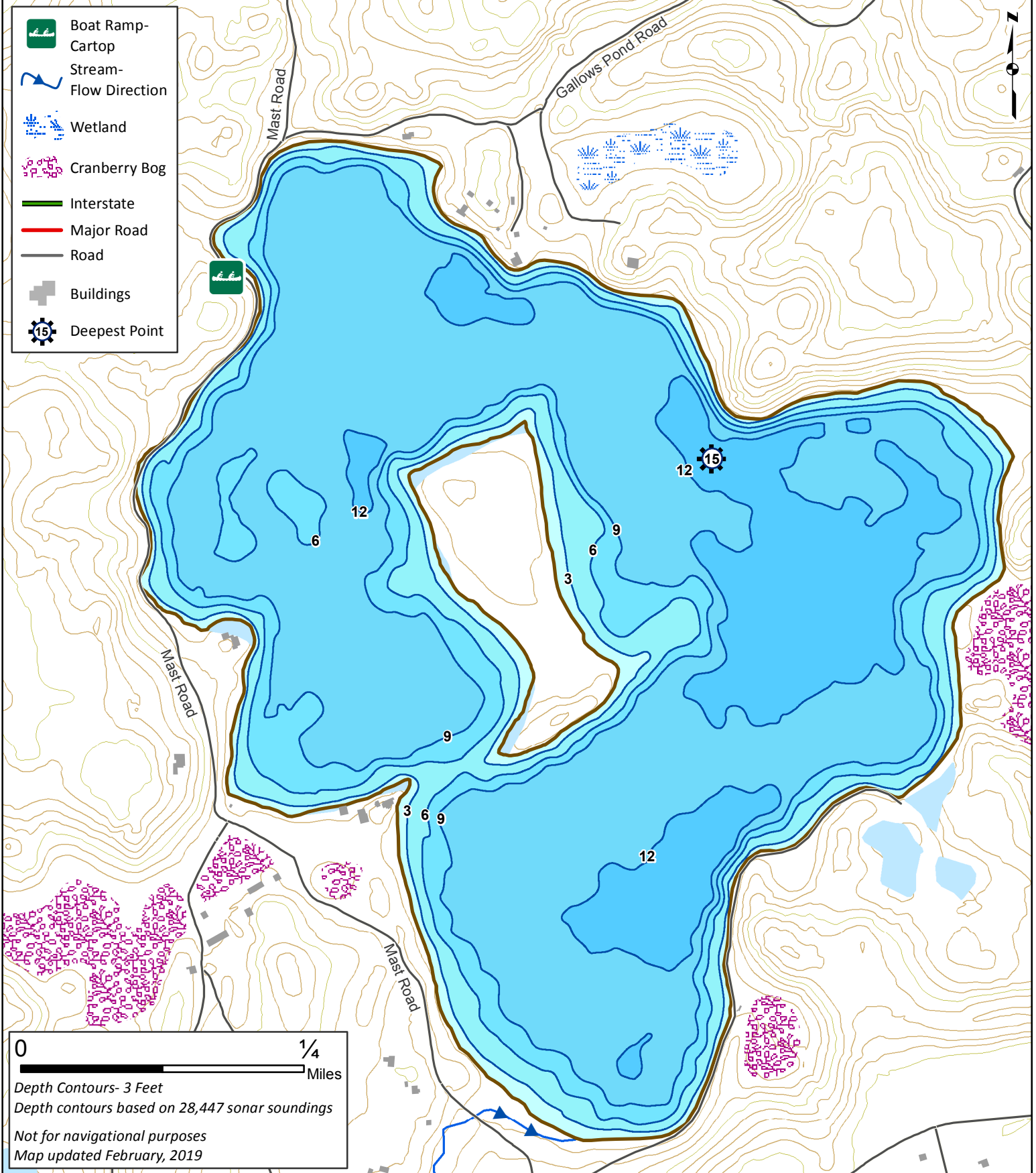
Buzzards Bay Watershed

Coordinates: 70°37'25.11"W 41°51'23.06"N

USGS QUAD: SAGAMORE



- Boat Ramp-Cartop
- Stream-Flow Direction
- Wetland
- Cranberry Bog
- Interstate
- Major Road
- Road
- Buildings
- Deepest Point



0 1/4
 Miles
 Depth Contours- 3 Feet
 Depth contours based on 28,447 sonar soundings
 Not for navigational purposes
 Map updated February, 2019