



Goose Pond, Lee/Tyringham

General Information

Goose Pond is a 263 acre enlarged great pond located off of Goose Pond Road on the Lee and Tyringham town line. Upper Goose Pond is connected to Goose Pond via a small but navigable channel and is 61 acres in size. Goose Pond has an average depth of 23 feet with a maximum of 48 feet while Upper Goose Pond averages 15 feet in depth with a maximum of 33 feet. The water of both ponds is infertile and has an average transparency of roughly 17 feet. The bottom is composed of mostly rubble with very little aquatic vegetation. Shoreline development ranges from moderate in the western end of Goose Pond to undeveloped in Upper Goose Pond which is a popular spot for paddling and swimming.

Recreational Access

The Division of Fisheries and Wildlife (DFW) manages a concrete pad boat ramp (73°12'3.04"W 42°16'27.76"N) located on the western shore just north of the pond's outlet at the end of Ridge St. Parking is limited to the shoulder of Ridge St. and adjoining Cooper Town Road. When these spaces are occupied, the approach to the ramp narrows which can make launching difficult. Shore fishing is limited to areas near the boat launch. Please contact the Western district DFW office for additional information and/or restrictions pertaining to public access of Goose Pond.

Fish Populations

The following fish species were found during MassWildlife surveys: Bluegill, Pumpkinseed, Redbreast Sunfish, Yellow Perch, Brown Bullhead, Golden Shiner, Chain Pickerel, Largemouth Bass, Smallmouth Bass, and White Sucker. In addition, the pond is stocked every spring and fall with trout.

Fishing

Goose Pond maintains a layer of cold oxygenated water throughout the warm summer months which enables trout to holdover for multiple seasons. As such, Goose Pond is primarily managed for trout. An abundance of stocked trout combined with a good forage base translates into excellent trout fishing. While this pond is justifiably renowned for its trout fishery, don't overlook fishing for Smallmouth Bass. These fish are not large, averaging between one and two pounds, but are abundant. Goose Pond has produced Chain Pickerel, Smallmouth Bass, Largemouth Bass, Sunfish, and Bullhead that meet minimum sizes for recognition by the Freshwater Sportfishing Awards Program.

Useful Links

[Get your Fishing License](#)

[Freshwater Fishing](#)

[Trout Stocking Information](#)

[Freshwater Sportfishing Awards Program](#)

Learn more

[Mass.gov/MassWildlife](https://mass.gov/MassWildlife)

Connect with us

Facebook.com/MassWildlife

Your local

MassWildlife office

88 Old Windsor Road
Dalton MA 01226
(413) 684-1646

STOP AQUATIC HITCHIKERS!

Prevent the transport of nuisance species.
Clean all recreational equipment.
ProtectYourWaters.net

Updated: 2018



Goose/Upper Goose Pond

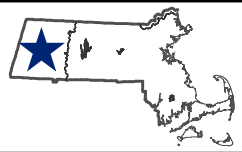
263/61 Acres

Lee/ Tyringham

Housatonic Watershed

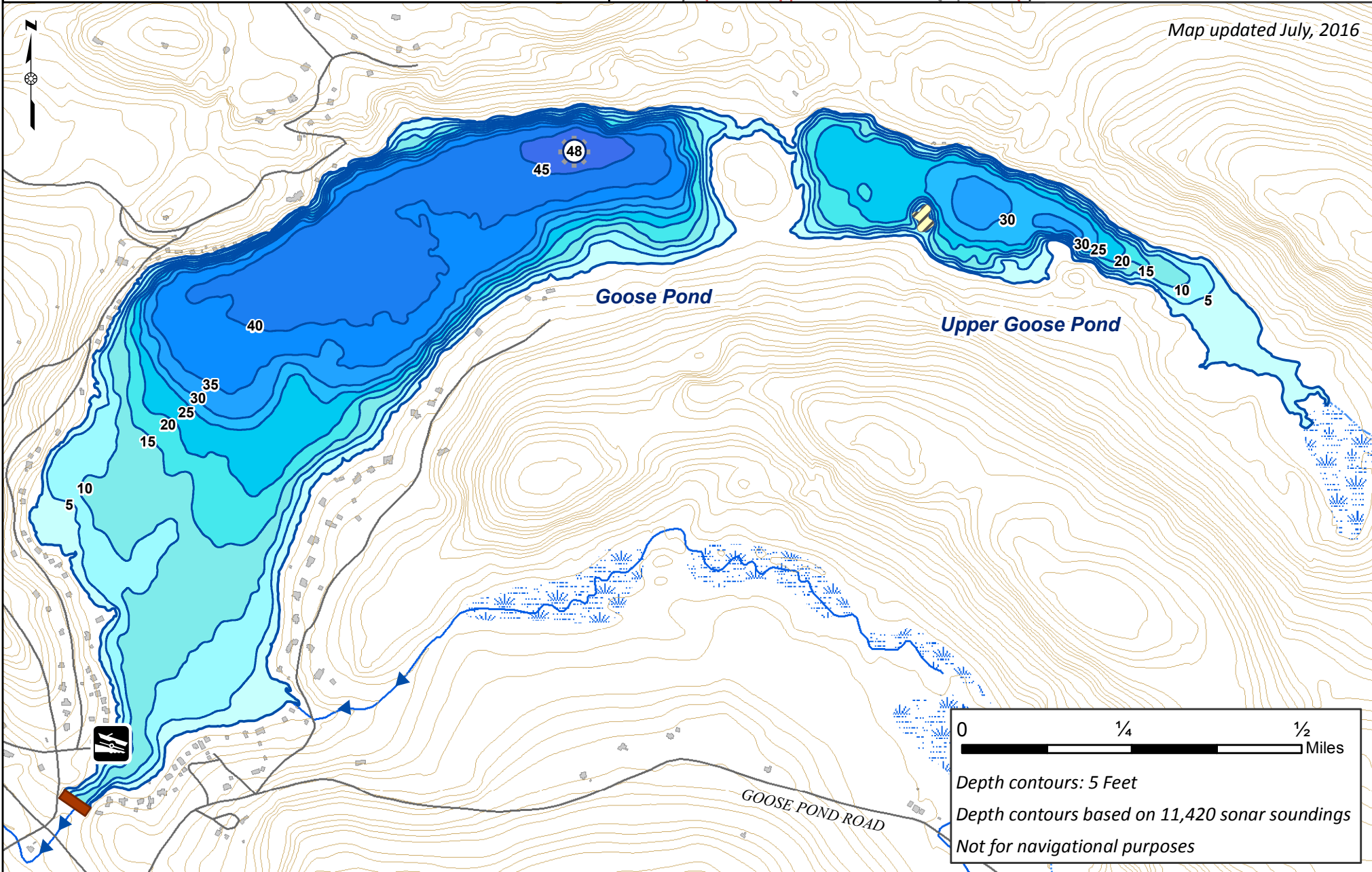
Coordinates: 73°11'59"W 42°16'28"N

USGS Quad: East Lee



- Boat Ramp
- Concrete
- Stream
- Flow Direction
- Wetland
- Deepest Point
- Interstate
- Major Road
- Road
- Buildings
- Dam
- Island/Sand Bar

Map updated July, 2016



0 ¼ ½
Miles

Depth contours: 5 Feet
 Depth contours based on 11,420 sonar soundings
 Not for navigational purposes