



Hamilton Reservoir, Holland

General Information

Hamilton Reservoir is a 423 acre impoundment of the Quinebaug River extending from Sturbridge Rd. in Holland Center to interstate 84 in Connecticut. The reservoir consists of two basins separated by a small, non-navigable culvert under Mashapaug Rd. The Northern basin is 248 acres in size with a mean depth of 8 feet and a maximum of 23 feet, while the southern basin is 175 acres in size with a mean depth of 7 feet and a maximum of 12 feet. The bottom is predominately mud with limited aquatic vegetation and the waters are slightly tannic and transparent to roughly 6 feet. The shoreline is extensively developed which contributes to heavy recreational use of the reservoir during summer months. Hamilton reservoir is drawn down annually during fall and winter so use caution when navigating during these times as depth varies seasonally.

Recreational Access

The town of Holland manages boat ramps in both the northern and southern basins. The north basin ramp is located off Leno Rd on the northern tip of the reservoir (72°9'9"W 42°4'4"N) and is a concrete ramp with an adjacent parking area suitable for 12 trailers. The south basin ramp is located off Shore Dr. on the southeastern shore of the south basin (72°8'51.9"W 42°1'56.6"N) and is considerably smaller with no available parking. Please contact the offices of the town of Holland for additional information and/or restrictions pertaining to public access of Hamilton Reservoir.

Fish Populations

The following fish species were found during MassWildlife surveys: Largemouth Bass, Smallmouth Bass, Chain Pickerel, Yellow Perch, White Perch, Black Crappie, Bluegill, Pumpkinseed, Redbreasted Sunfish, Brown Bullhead, Yellow Bullhead, Common Carp, White Sucker, Golden Shiner, landlocked alewife, and Banded Killifish. Both basins of Hamilton Reservoir are also stocked annually in spring and fall with trout and occasionally with Northern Pike or Tiger Muskellunge when available. Please check the MassWildlife trout stocking and/or Northern Pike and Tiger Muskellunge stocking page online for stocking dates.

Fishing

Hamilton Reservoir is stocked with good numbers of trout each year and thus is a popular destination for trout anglers during spring and fall. In addition to trout, a strong forage base supports an abundance of Largemouth Bass and Chain Pickerel with some larger individuals. Carp are also a popular draw at Hamilton Reservoir with individuals commonly exceeding 10 pounds. Both Yellow and White Perch are also numerous and can be caught easily from a boat or through the ice in winter. Hamilton Reservoir has produced Largemouth Bass, Northern Pike, Common Carp, Yellow Perch, Black Crappie, and Rainbow Trout that meet minimum sizes for recognition by the Sportfishing Awards Program.

Useful links

[Get your Fishing License](#)

[Freshwater Fishing](#)

[Trout Stocking Information](#)

[Freshwater Sportfishing Awards Program](#)

Learn more

[Mass.gov/MassWildlife](https://mass.gov/MassWildlife)

Connect with us

[Facebook.com/MassWildlife](https://facebook.com/MassWildlife)

Your local MassWildlife office

341 East Street
Belchertown, 01007
(413) 323-7632

STOP AQUATIC HITCHIKERS!

Prevent the transport of nuisance species.
Clean all recreational equipment.
ProtectYourWaters.net

Updated: 2018



Hamilton Reservoir

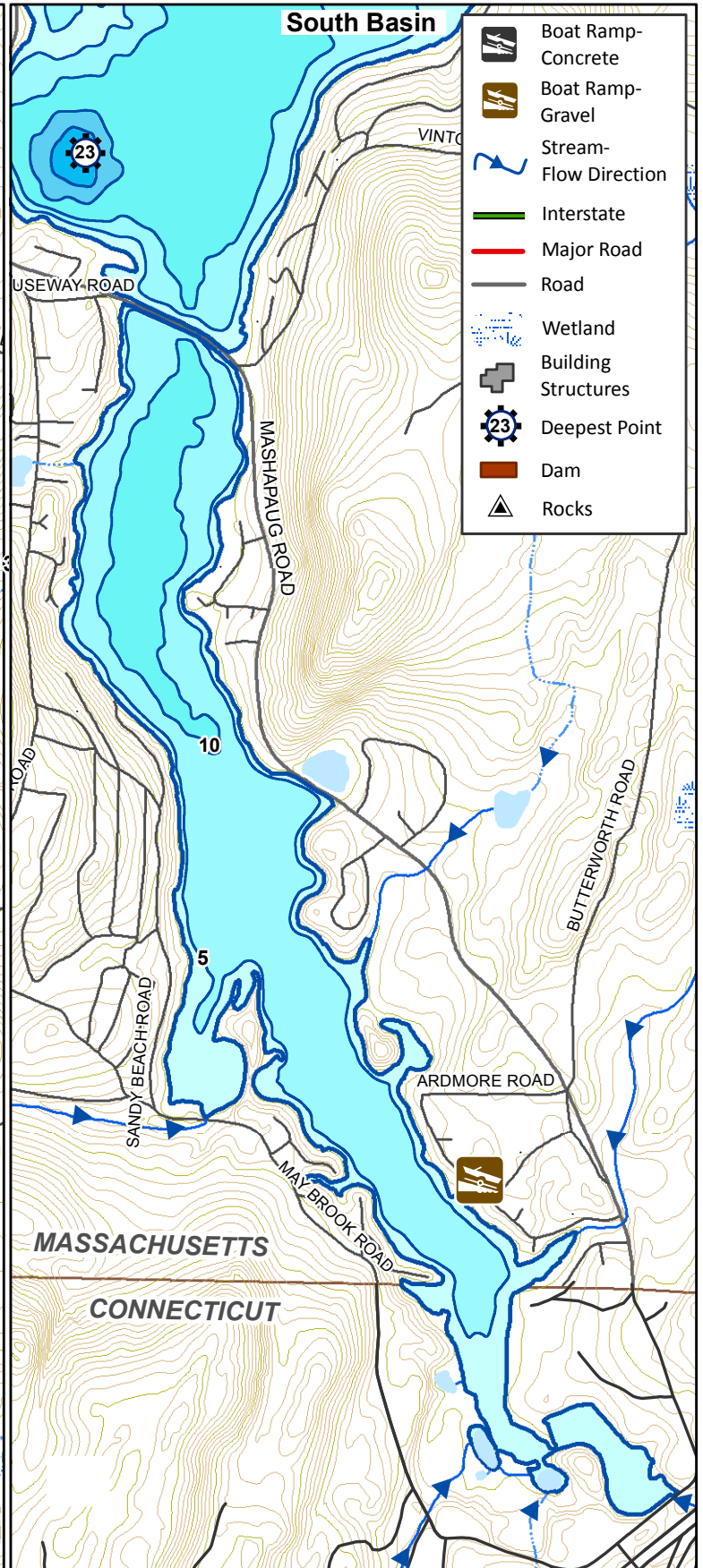
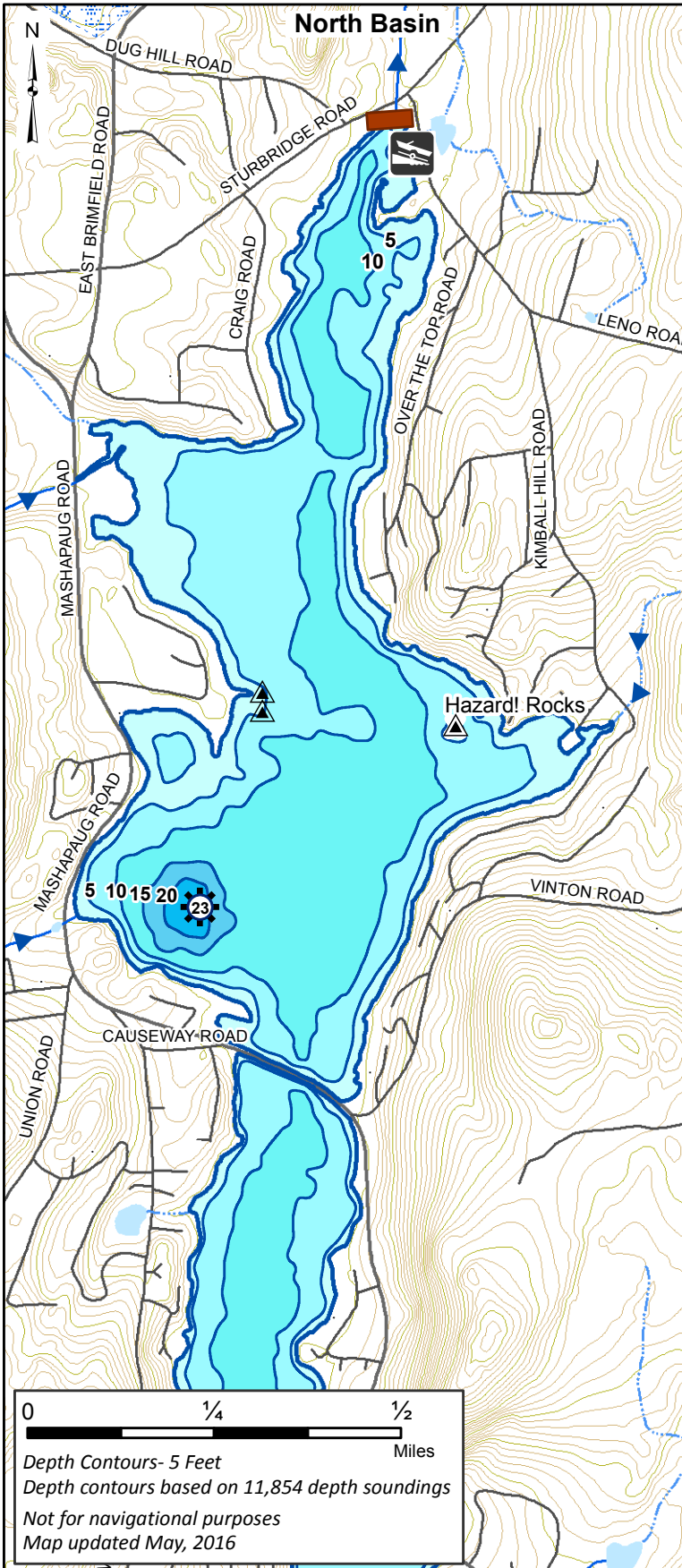
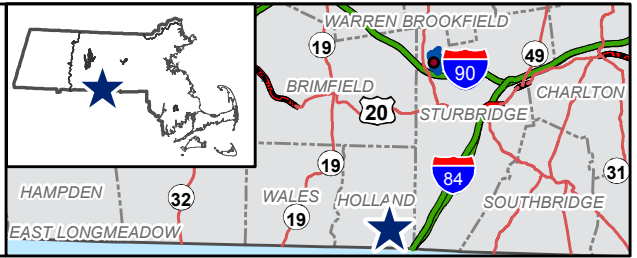
423 Acres

Holland

Quinebaug River Watershed

Coordinates: 72°09'09"W 42°04'04"N

USGS Quad: WALES



- Boat Ramp-Concrete
- Boat Ramp-Gravel
- Stream-Flow Direction
- Interstate
- Major Road
- Road
- Wetland
- Building Structures
- Deepest Point
- Dam
- Rocks