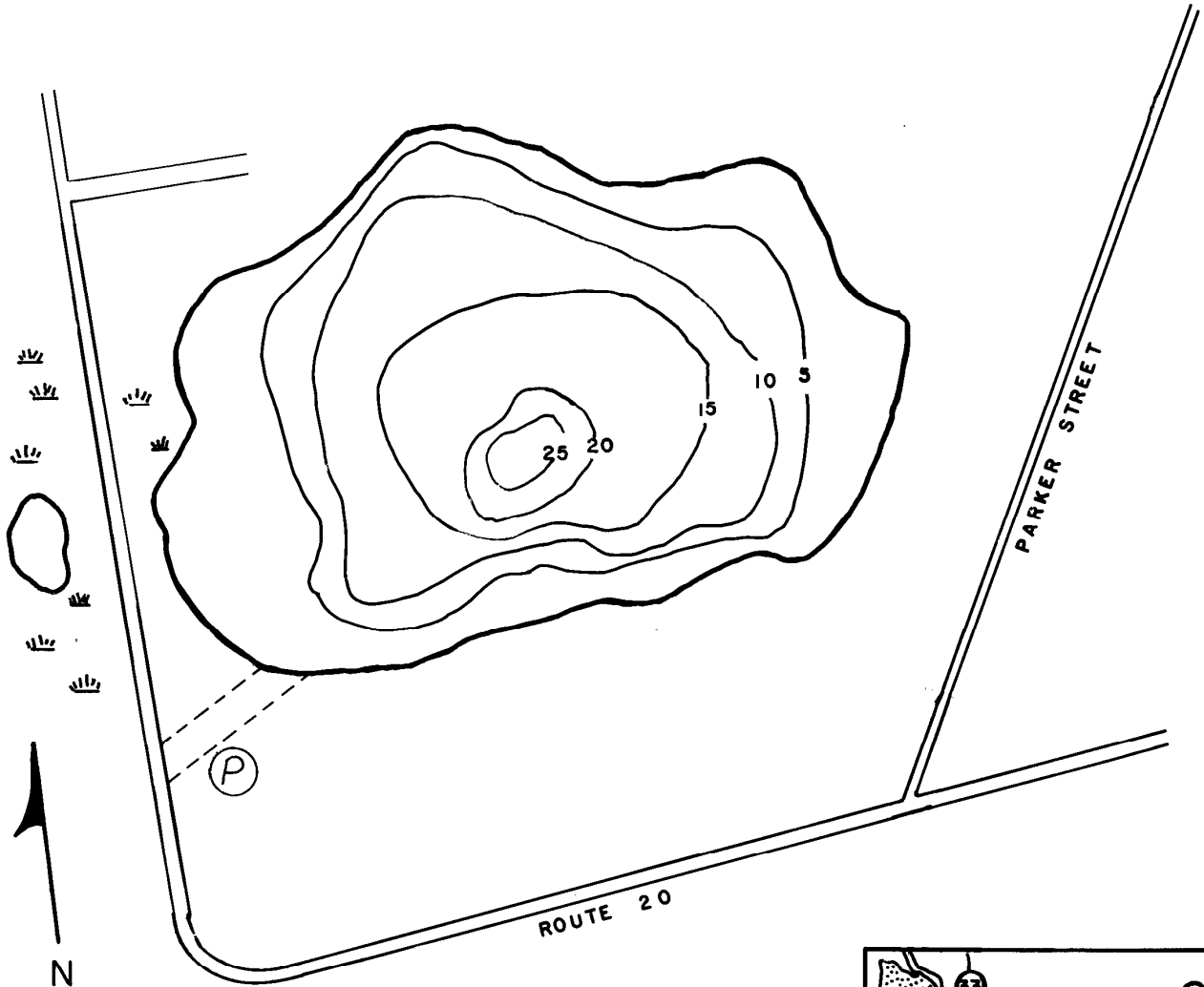




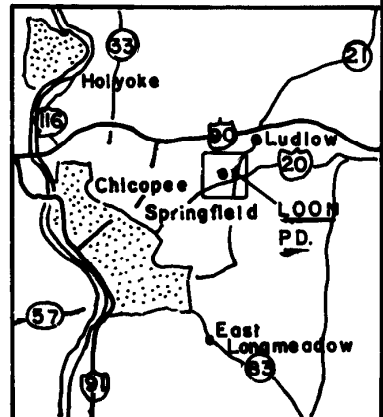
LOON POND SPRINGFIELD

AREA = 29 ACRES



1/8 MILE

NOT FOR NAVIGATIONAL PURPOSES



LOON POND (Springfield)

General Information:

This is a 29-acre, warm water pond with an average depth of 12 feet and a maximum depth of 25 feet. There is less than a mile of shoreline, and 40% of it is developed. The bottom is a mixture of sand and gravel to a depth of 12 feet. Aquatic vegetation is scant. Access is a county right of way off Pasco Street. There is an informal gravel ramp, but motor boats are restricted.

This pond can be located on the U.S.G.S. topographical quad map titled "Springfield North." Nearby fishing areas include Lake Lorraine and Fivemile Pond.

Fish Populations:

A 1979 fish population assessment found nine species. Largemouth bass were the only gamefish found. Nongame fish included yellow perch, white perch, pumpkinseeds, bluegill, redbreasted sunfish, golden shiners, white sucker and killifish.

Fishing:

As an inner city pond, Loon Pond is managed as a high production small bass pond to provide maximum angling recreation. The pond receives intensive fishing pressure for bass and panfish alike. Yellow perch are abundant and show good growth rates with many fish nine inches or better. Bluegills and pumpkinseeds are over abundant and their harvest is encouraged. White perch are dominated by a 1975-year class of nine-inch fish. Loon pond is stocked with trout in the spring, and is stocked again in the fall when trout are available.

March 1993