



Whalom Lake, Lunenburg/Leominster

General Information

Whalom Lake is a 103-acre great pond located 3 miles east of Fitchburg and 3½ miles north of Leominster near Rt. 13. Average depth is 19 feet with a maximum depth of 44 feet and water clarity is generally good with an average transparency of 17 feet. Aquatic vegetation is very scant over a muck and gravel bottom. The proximity of Whalom Lake to Leominster and Fitchburg and ample shore and boat access result in heavy recreational use.

Recreational Access

The City of Leominster manages a concrete boat ramp (71°44'40.15"W 42°34'21.70"N) and 10-car parking lot located on the western shore of the lake off of Lakeside Avenue. Shore fishing is popular off Lakefront Avenue, which runs parallel to the western shore. Please contact the City of Leominster for additional information and/or restrictions pertaining to public access of Whalom Lake.

Fish Populations

The following fish species were found during MassWildlife surveys: Bluegill, Pumpkinseed, Yellow Perch, Smallmouth Bass, Largemouth Bass, Rock Bass, Chain Pickerel, Banded Killifish, Yellow Bullhead, and Brown Bullhead. Whalom Lake is also stocked with trout each spring.

Fishing

Whalom Lake is relatively infertile compared to ponds of similar size in Central Massachusetts. Yellow Perch display slightly above-average growth but larger individuals of this species and other species such as Largemouth Bass and Chain Pickerel are difficult to find. Bluegill and Pumpkinseed can be large and will provide good fishing on light tackle. Ice-fishing for Yellow Perch can also be productive, and trout fishing in spring is excellent. Whalom Lake has produced Rainbow Trout and Brook Trout that meet minimum sizes for recognition by the Freshwater Sportfishing Awards Program.

Useful Links

[Get your Fishing License](#)

[Freshwater Fishing](#)

[Trout Stocking Information](#)

[Freshwater Sportfishing Awards Program](#)

Learn more

[Mass.gov/MassWildlife](https://mass.gov/MassWildlife)

Connect with us

[Facebook.com/MassWildlife](https://facebook.com/MassWildlife)

Your local

MassWildlife office

211 Temple Street
West Boylston, MA 01583
(508) 835-3607

STOP AQUATIC HITCHIKERS!

Prevent the transport of nuisance species.
Clean all recreational equipment.
ProtectYourWaters.net

Updated: 2016



Whalom Lake

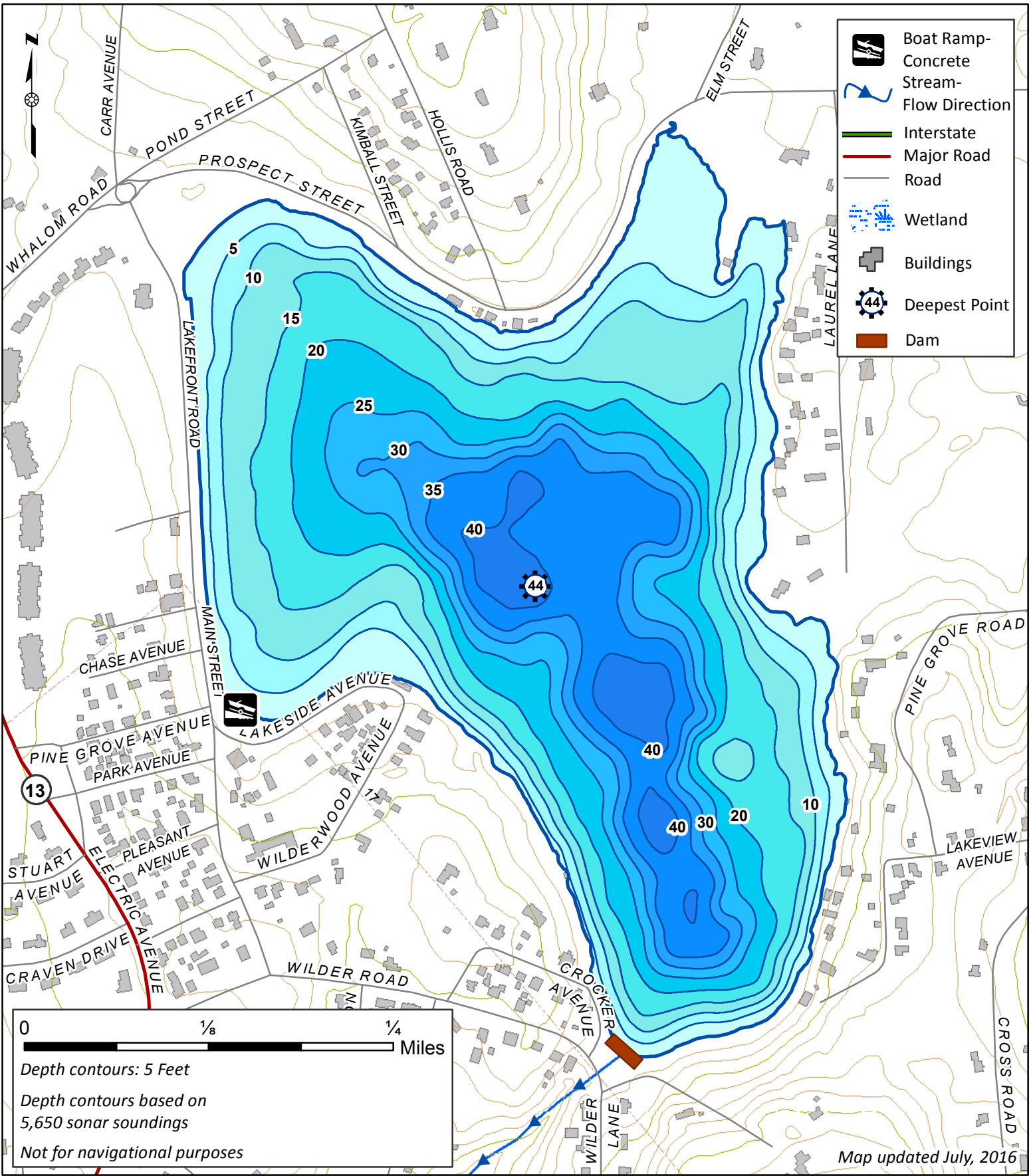
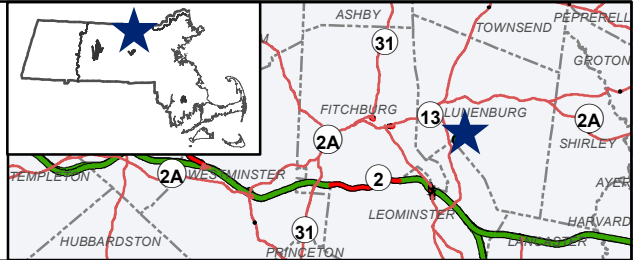
103 Acres

Lunenburg

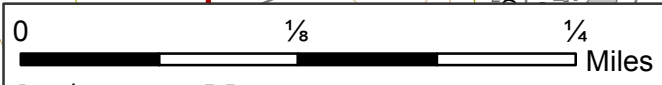
Nashua Watershed

Coordinates: 71°44'39"W 42°34'21"N

USGS Quad: Shirley



- Boat Ramp
- Concrete
- Stream
- Flow Direction
- Interstate
- Major Road
- Road
- Wetland
- Buildings
- Deepest Point
- Dam



Depth contours: 5 Feet
 Depth contours based on 5,650 sonar soundings
 Not for navigational purposes

Map updated July, 2016