



Moosehorn pond, Hubbardston

General Information

Moosehorn Pond is 110-acre great pond has an average depth of 8 feet, a maximum depth of 21 feet. Aquatic plants are common around the entire perimeter. The northern section of the pond is a bog with floating islands and typical bog type vegetation. The shoreline is almost completely undeveloped.

Recreational Access

MassWildlife manages a gated gravel ramp with cartop access (short carry to the pond) and a parking lot off of Old Princeton Road (71°58'7.08"W 42°27'56.56"N). Please contact MassWildlife for additional information, and/or restrictions pertaining to public access of Moosehorn Pond.

Fish Populations

The following fish species were found during MassWildlife surveys: Largemouth Bass, Chain Pickerel, Yellow Perch, Bluegill, Pumpkinseed, Black Crappie, Brown Bullhead, Golden Shiner, and Chub Suckers.

Fishing

Moosehorn is one of the more remote ponds in Central Massachusetts and affords an excellent opportunity for an enjoyable fishing experience without crowds and speed boats. Largemouth Bass and Pickerel are both common here and should provide good fishing throughout the year. The abundant panfish, especially Yellow Perch and Bullheads, will provide much enjoyment. Very large Crappies are known to be taken regularly. Channels in the bog on the north end of the pond allow the amateur botanist to observe the unique plant community and associated wildlife from the comfort of a canoe. Moosehorn Pond has produced Largemouth Bass, Yellow Perch, and Brown Bullhead that meet minimum sizes for recognition by the Sportfishing Awards Program.

Useful Links:

[Get your Fishing License](#)

[Freshwater Fishing](#)

[Trout Stocking Information](#)

[Freshwater Sportfishing Awards Program](#)

Learn more:

[Mass.gov/MassWildlife](https://www.mass.gov/masswildlife)

Connect with us:

[Facebook.com/MassWildlife](https://www.facebook.com/MassWildlife)

Your local

MassWildlife office:

211 Temple Street
West Boylston, MA 01583
(508) 835-3607

STOP AQUATIC HITCHIKERS!

Prevent the transport of nuisance species.
Clean all recreational equipment.
ProtectYourWaters.net

Updated: 2018



Moosehorn Pond

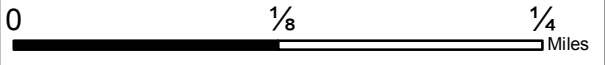
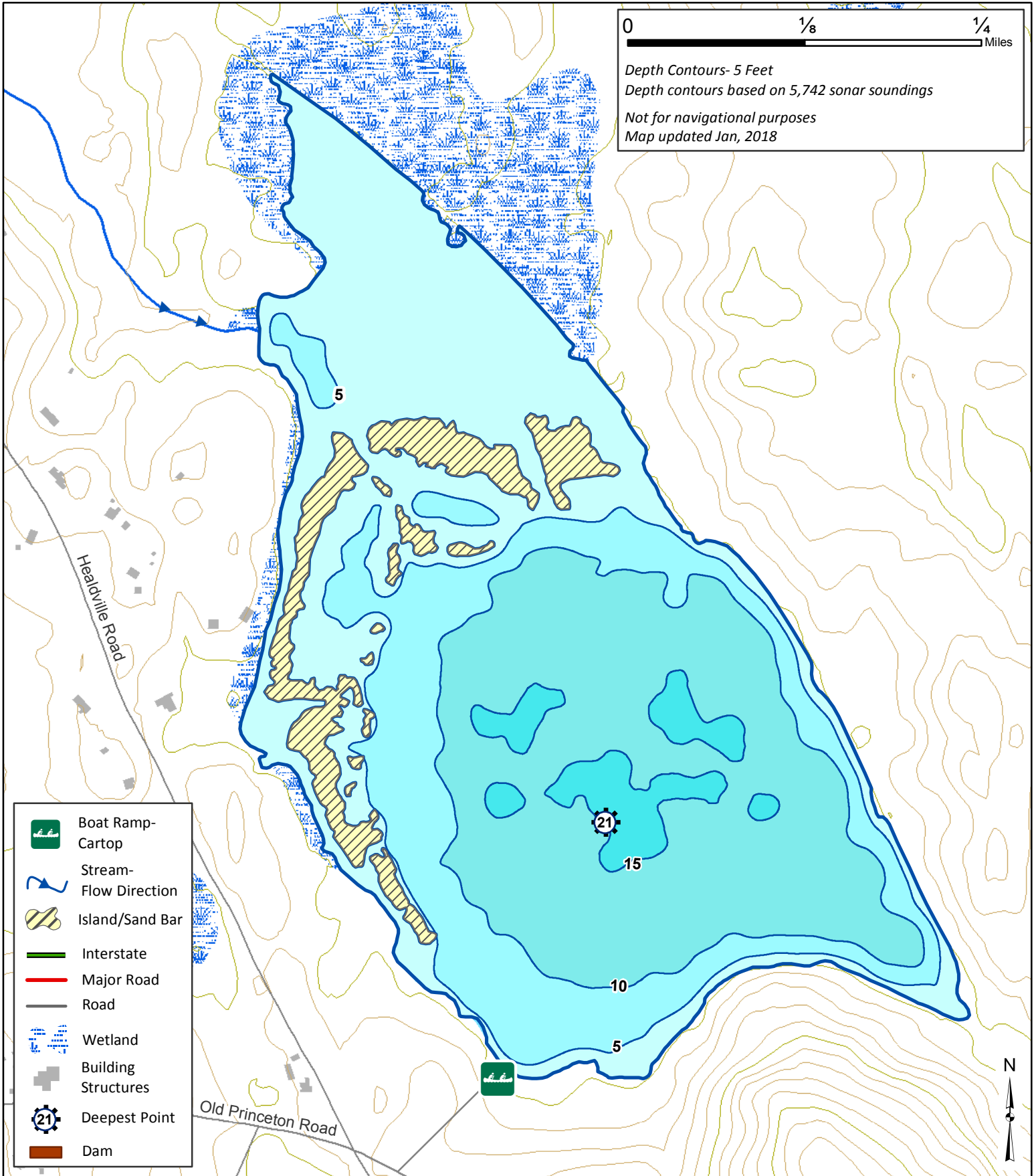
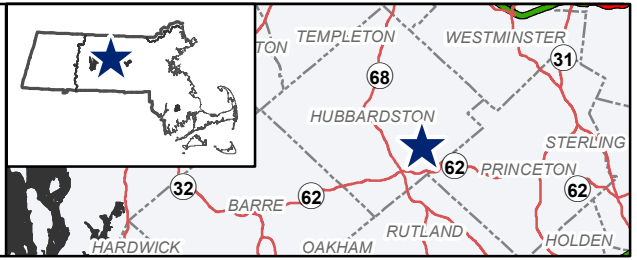
110 Acres

Hubbardston

Chicopee River Watershed

Coordinates: 71°58'7.08"W 42°27'56.56"N

USGS Quad: WACHUSETT MTN



Depth Contours- 5 Feet
Depth contours based on 5,742 sonar soundings
Not for navigational purposes
Map updated Jan, 2018

- Boat Ramp-Cartop
- Stream-Flow Direction
- Island/Sand Bar
- Interstate
- Major Road
- Road
- Wetland
- Building Structures
- Deepest Point
- Dam

