

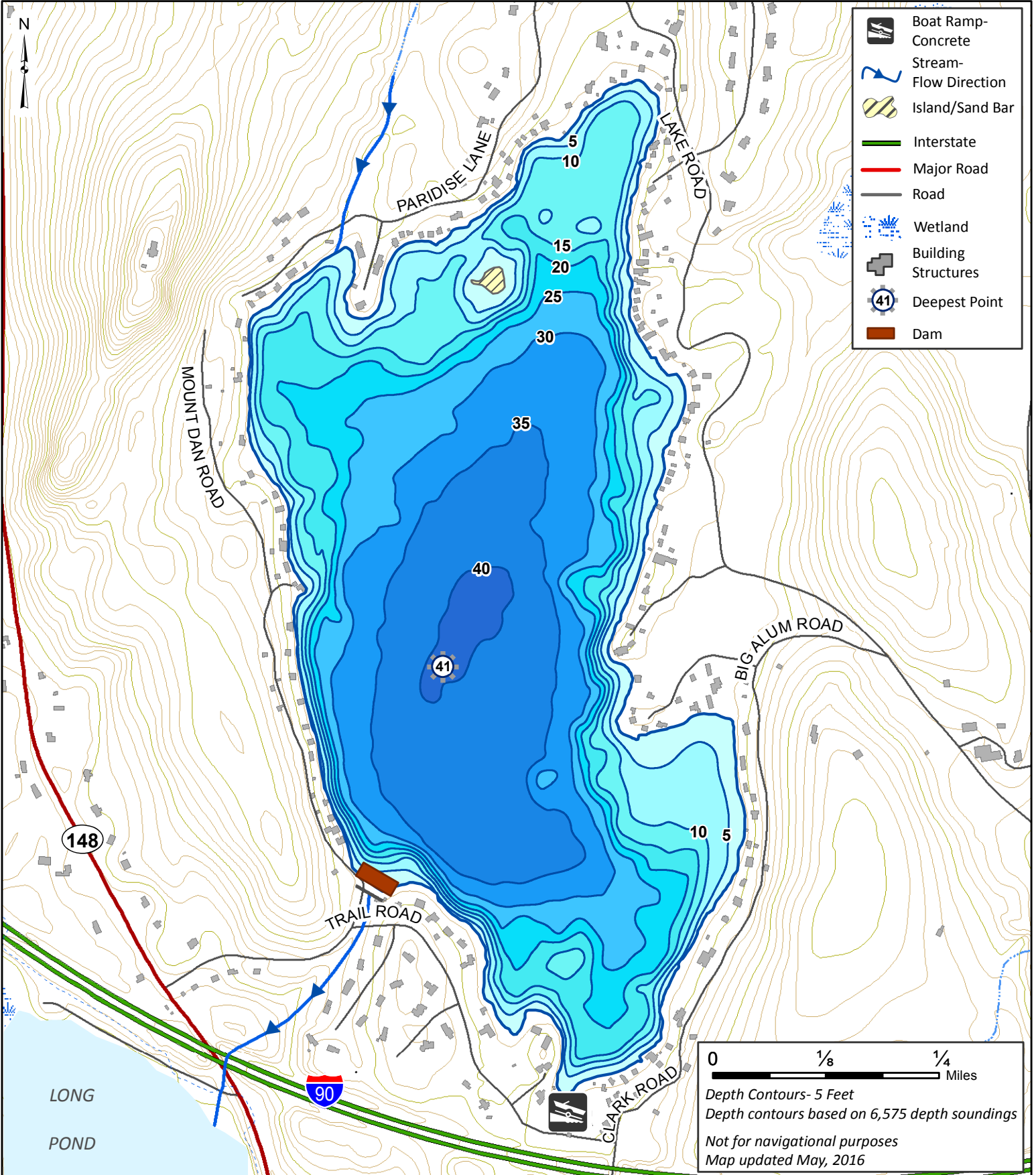
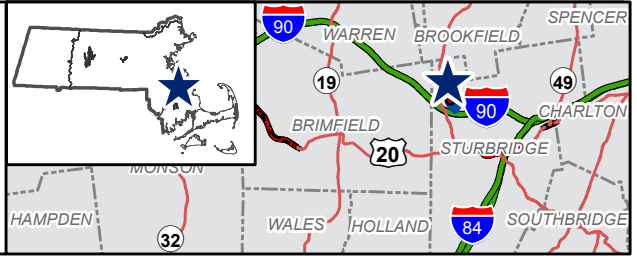


Big Alum Pond

200 Acres
Sturbridge

Quinebaug River Watershed

Coordinates: 72°07'05"W 42°08'05"N
USGS Quad: WARREN, EAST BROOKFIELD



- Boat Ramp - Concrete
- Stream - Flow Direction
- Island/Sand Bar
- Interstate
- Major Road
- Road
- Wetland
- Building Structures
- Deepest Point
- Dam

0 1/8 1/4 Miles

Depth Contours - 5 Feet
Depth contours based on 6,575 depth soundings
Not for navigational purposes
Map updated May, 2016



Big Alum (Alum) Pond, Sturbridge

General Information

Big Alum Pond is a 200 acre Great Pond located off of Route 148, approximately 3 miles northwest of Sturbridge town center. Big Alum Pond averages 23 feet deep with a maximum of 41 feet and the water is typically transparent to between 10 and 15 feet. Aquatic vegetation is sparse and generally restricted to shallow coves and shores; the bottom is rocky. The shores of Big Alum are developed extensively with year-round homes and fishing, boating, water skiing and swimming are all popular activities at this lake during summer. Big Alum Pond is drawn down annually during fall and winter so use caution when navigating during these times as depth varies seasonally.

Recreational Access

The town of Sturbridge manages a concrete ramp (72°7'5.678"W 42°8'4.170"N) and adjacent parking area suitable for 10 trailers on the southern shore off of Clark Rd. Shore access is restricted to areas immediately adjacent to the ramp. Please contact the offices of the town of Sturbridge for additional information, fee structure, and/or restrictions pertaining to public access of Big Alum Pond.

Fish Populations

The following fish species were found during MassWildlife surveys: Largemouth Bass, Smallmouth Bass, Chain Pickerel, Yellow Perch, Bluegill, Pumpkinseed, Redbreast Sunfish, Brown Bullhead, Yellow Bullhead, and Banded Killifish. Big Alum Pond is also stocked annually in the spring and fall with trout.

Fishing

Big Alum Pond maintains a layer of cold oxygenated water throughout the warm summer months which enables trout to survive for multiple seasons. While an occasional large (2lb+) trout is taken, anglers will be mostly fishing for recently stocked fish, which are abundant. Trout fishing is best in spring and fall while bass fishing is excellent during summer. Anglers can expect to catch both Smallmouth and Largemouth Bass in good numbers with an occasional large (5 lb+) fish. Icefishing for Chain Pickerel and Yellow Perch is also popular. Big Alum Pond has produced Largemouth Bass, Chain Pickerel, Yellow Perch, sunfish, Brook Trout, Rainbow Trout, and Tiger Trout that meet minimum sizes for recognition by the Freshwater Sportfishing Awards Program.

Useful Links:

[Get your Fishing License](#)

[Freshwater Fishing](#)

[Trout Stocking Information](#)

[Freshwater Sportfishing Awards Program](#)

Learn more:

[Mass.gov/MassWildlife](https://mass.gov/MassWildlife)

Connect with us:

Facebook.com/MassWildlife

Your local

MassWildlife office:

211 Temple Street
West Boylston, MA 01583
(508) 835-3607

STOP AQUATIC HITCHIKERS!

Prevent the transport of nuisance species.
Clean all recreational equipment.
ProtectYourWaters.net

Updated: 2016