



Webster Lake (Chaubunagungamaug)

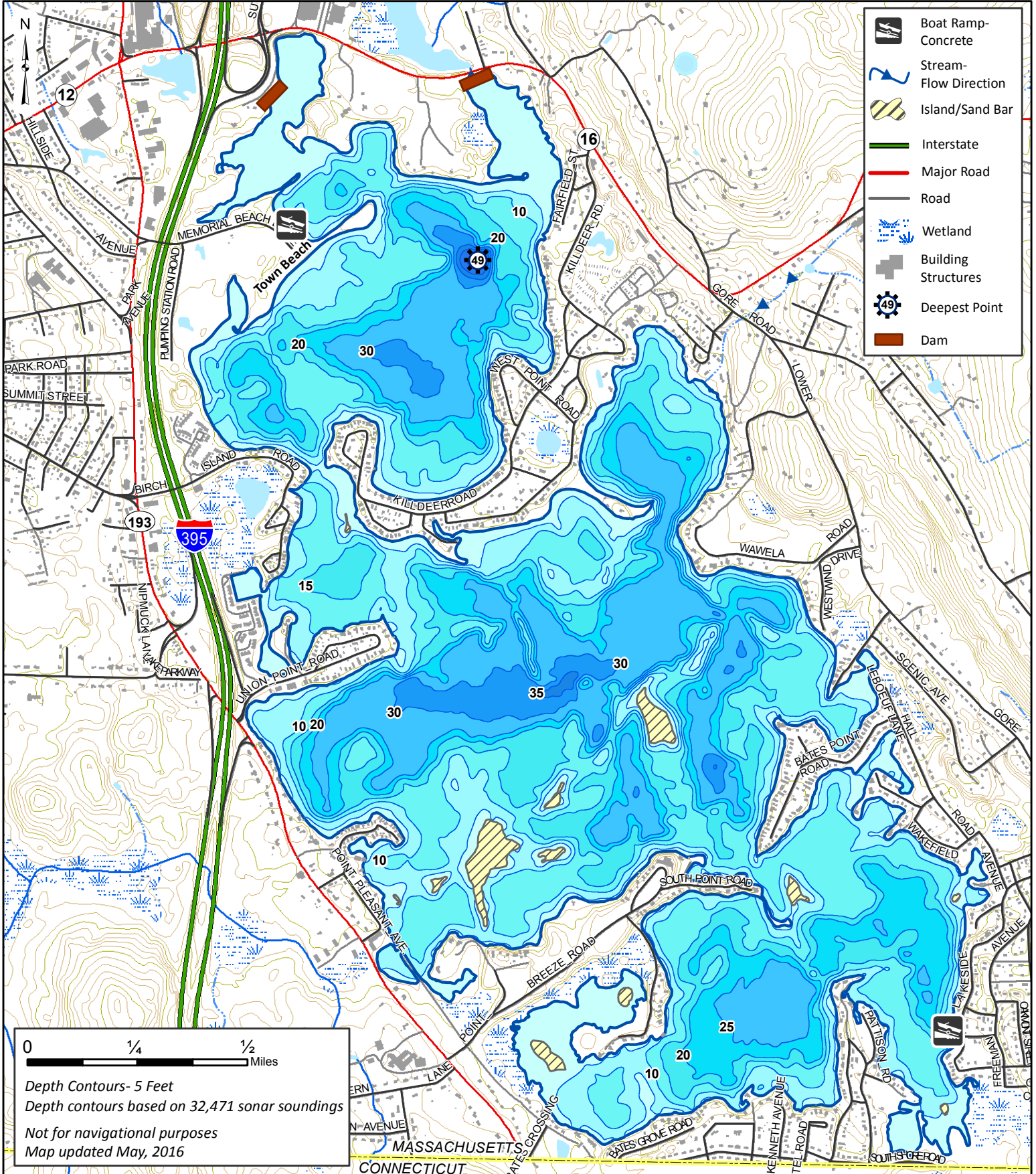
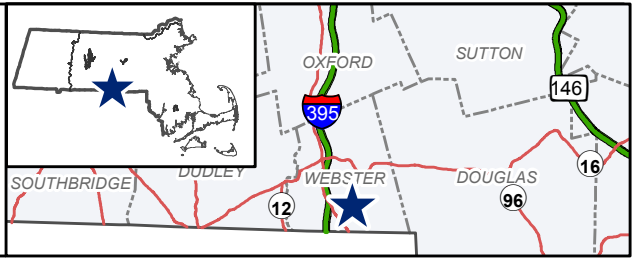
1297 Acres

Webster

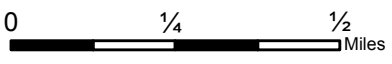
French River Watershed

Coordinates: 71°49'39"W 42°01'41"N

USGS Quad: Oxford



- Boat Ramp - Concrete
- Stream - Flow Direction
- Island/Sand Bar
- Interstate
- Major Road
- Road
- Wetland
- Building Structures
- Deepest Point
- Dam



Depth Contours- 5 Feet
 Depth contours based on 32,471 sonar soundings
 Not for navigational purposes
 Map updated May, 2016



Lake Chaubunagungamuag (Webster Lake)

Webster

General Information

Webster Lake is a 1,297 acre great pond located just east of route 52, abutting the Connecticut border in Webster and is the state's largest natural lake. The underwater terrain of Webster lake is quite complex, particularly in the central basin which contains deep holes, submerged plateaus, and rocky shoals all in close proximity to one another. The average depth of Webster Lake is 15 feet, the maximum depth of 49 feet and the water is generally transparent to 10 feet. The bottom is primarily mud and rock with areas of aquatic vegetation which are largely restricted to shallow coves. The shoreline is heavily developed and the lake receives heavy recreational use during summer.

Recreational Access

There are two boat ramps on Webster Lake which are open to the public. The Department of Conservation and Recreation manages a concrete ramp and adjacent parking area (71°49'35.935" W 42°1'40.492" N) suitable for 18 trailers off of Lakeside Ave. on the southeastern shore. The Town of Webster manages a double concrete ramp and large parking area (71°51'23.758" W 42°3'40.17.838" N) at Memorial Beach off of Route 193 on the northwest shore where a parking fee is charged. Shoreline access is limited to areas adjacent to the ramps. Please contact the City of Webster or the offices of the Douglas State Forest for additional information and/or restrictions pertaining to public access of Webster Lake.

Fish Populations

The following fish species were found during MassWildlife surveys: Largemouth Bass, Smallmouth Bass, Chain Pickerel, Yellow Perch, White Perch, Black Crappie, Bluegill, Pumpkinseed, Redbreast Sunfish, Brown Bullhead, Yellow Bullhead, White Sucker, and landlocked Alewife. Trout are also stocked annually in the spring and fall.

Fishing

Webster Lake offers an extremely diverse fishery with Largemouth Bass, Smallmouth Bass, Chain Pickerel, trout, and an assortment of panfish. Trout fishing is very popular in the spring which gives way to bass and pan fish fishing in the summer. Webster Lake also has an exceptional Black Crappie population with individuals in the 1 to 2 lb range commonly reported. Webster Lake has produced Largemouth Bass, Smallmouth Bass, Chain Pickerel, bullhead, Black Crappie, Yellow Perch, White Perch, Sunfish, Rainbow Trout, Brook Trout, and Tiger Trout that meet minimum sizes for recognition by the Sportfishing Awards Program.

Useful Links:

[Get your Fishing License](#)

[Freshwater Fishing](#)

[Trout Stocking Information](#)

[Freshwater Sportfishing Awards Program](#)

Learn more:

Mass.gov/MassWildlife

Connect with us:

Facebook.com/MassWildlife

Your local

MassWildlife office:

211 Temple Street
West Boylston, MA 01583
(508) 835-3607

STOP AQUATIC HITCHIKERS!

Prevent the transport of nuisance species.
Clean all recreational equipment.
ProtectYourWaters.net

Updated: 2016