



Horn Pond, Woburn

General Information

This 116-acre raised natural great pond is located a half-mile south of Woburn Center. Maximum depth is 60 feet; average depth 20 feet. Transparency is only fair at six feet. Aquatic vegetation is scant except in a few coves and shallows, although algae often becomes abundant during the warm months. Despite the fact that the pond is located in an urban area, a high proportion of the immediate shoreline is undeveloped and is open to fishing.

Recreational Access

Boat access is provided by a paved ramp located at the south end of the pond just west of the outlet (71° 9'12.70"W 42°27'52.10"N). Electric Motors Only. The ramp is managed by the town of Woburn and closes at 8 P.M. Ample parking is available at the ramp. Shore fishermen can enjoy their sport around the clock. Please contact the town of Woburn for additional information, fee structure, and/or restrictions pertaining to public access of Horn Pond.

Fish Populations

The following fish species were found during MassWildlife surveys: Largemouth Bass, Chain Pickerel, Black Crappie, Brown Bullhead, Yellow Bullhead, Yellow Perch, Bluegill, Pumpkinseed, White Sucker, Carp, and Golden Shiner. Thousands of trout (Brook, Brown, Rainbow, and Tiger) are stocked here every year. The majority of these fish are stocked in the spring, but the pond is also stocked with trout in the fall.

Fishing

One of the most heavily fished trout waters in the entire District; Horn Pond provides excellent trout action throughout the spring and fall months. Due to the heavy fishing pressure and the very limited amount of cold water habitat remaining during the summer, it is doubtful that many trout carry over from one season to the next, but due to the high number of fish stocked, trout are available throughout much of the year. Horn Pond also supports a good panfish and Largemouth Bass fishery, providing action year round. The best bass fishing is in late spring and on summer evenings. The bullhead and carp populations are also cooperative at this time. Chain Pickerel, and especially the large population of Yellow Perch, provide good ice fishing action during the winter. In short, this pond has such a wealth of native and stocked fisheries resources that, regardless of the season, it is unlikely to disappoint any determined fisherman. Horn Pond has produced Yellow Perch, and Tiger Trout that meet the minimum size for recognition by the Freshwater Sportfishing Awards Program.

Useful Links:

[Get your Fishing License](#)

[Freshwater Fishing](#)

[Trout Stocking Information](#)

[Freshwater Sportfishing Awards Program](#)

Learn more:

[Mass.gov/MassWildlife](https://www.mass.gov/MassWildlife)

Connect with us:

[Facebook.com/MassWildlife](https://www.facebook.com/MassWildlife)

Your local

MassWildlife office:

85 Fitchburg Road
Ayer, MA 01432
(978) 772-2145

STOP AQUATIC HITCHIKERS!

Prevent the transport of nuisance species.
Clean all recreational equipment.
[ProtectYourWaters.net](https://www.protectyourwaters.net)

Updated: 2018

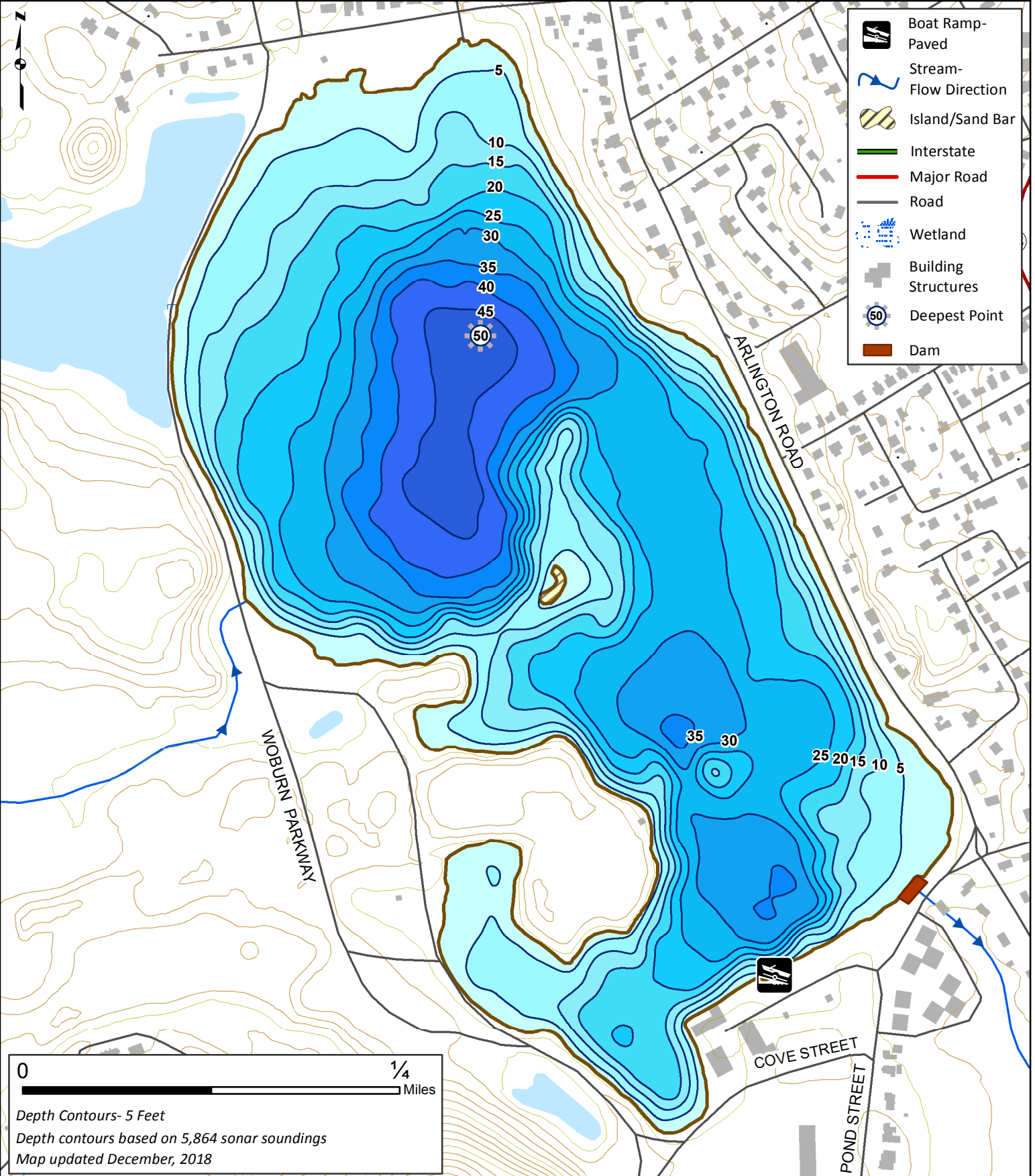
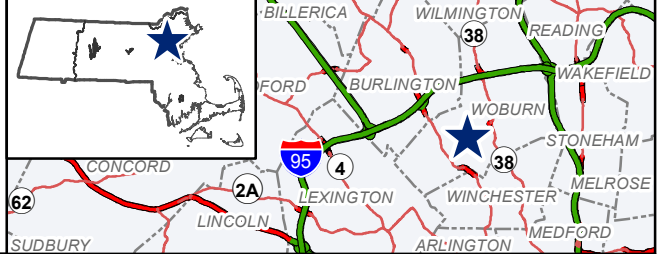


Horn Pond

116 Acres
Woburn

Mystic River Watershed

Coordinates: 71°9'13" W 42°27'52" N
USGS Quad: LEXINGTON



- Boat Ramp-Paved
- Stream-Flow Direction
- Island/Sand Bar
- Interstate
- Major Road
- Road
- Wetland
- Building Structures
- Deepest Point
- Dam

0 1/4
 Miles

Depth Contours- 5 Feet
 Depth contours based on 5,864 sonar soundings
 Map updated December, 2018