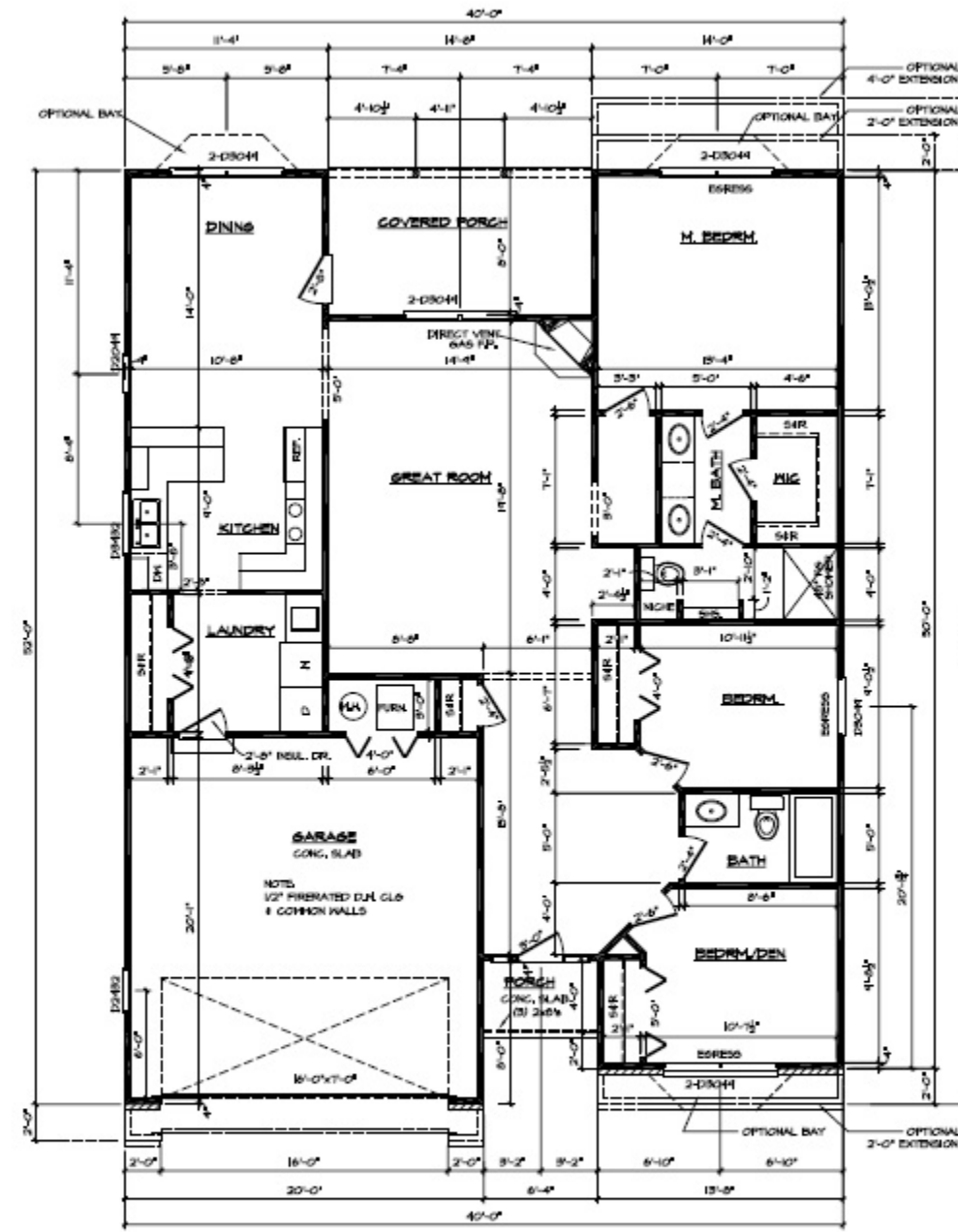


OPT. BAY PLAN
SCALE: 1/4" = 1'-0"

ENERGY CONSERVATION DATA:	
PROPOSED RESIDENTIAL PACKAGE:	3
GLAZING R-VALUE:	30
HALL R-VALUE:	15
WINDOWS R-VALUE - % AIR OF WALL AREA:	2.0
DOOR R-VALUE:	2.2
FLOOR R-VALUE - (COVER OUTSIDE AIR):	14
BASEMENT WALL R-VALUE:	0
HVAC EFF. HEAT- (APPROXIMATE):	45/1.0
HVAC EFF. COOLING- (HEAT):	10

VALUES SHOWN ARE MINIMUMS



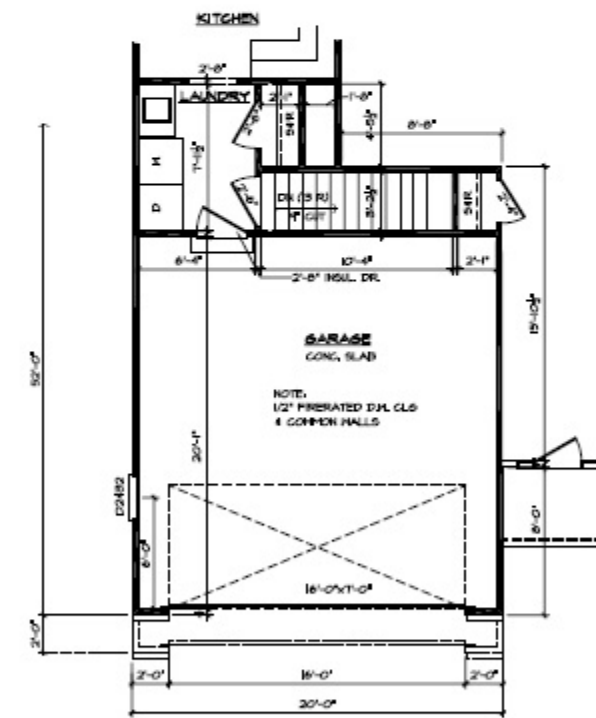
FIRST FLOOR PLAN
SCALE: 1/4" = 1'-0"

ALL WALLS ARE 3 1/2" UNLESS OTHERWISE NOTED.
TYPICAL DOOR DESIGNATION = 2888 = 7'-0" X 6'-8"

SQUARE FOOTAGE BREAKDOWN	
FIRST FLOOR:	1,453 S.F.
GARAGE:	431 S.F.

HALL LINED
- 8'-0" HIGH HALL

BUILDER RESERVES THE RIGHT TO CHANGE BUILDING SPECIFICATIONS FROM TIME TO TIME TO MEET CHANGING CODE REQUIREMENTS AND MATERIAL AVAILABILITY.



BASEMENT/STAIRWAY OPTION
SCALE: 1/4" = 1'-0"

GARAGE LEFT

SANDPIPER III	
5/13	NOTED 2