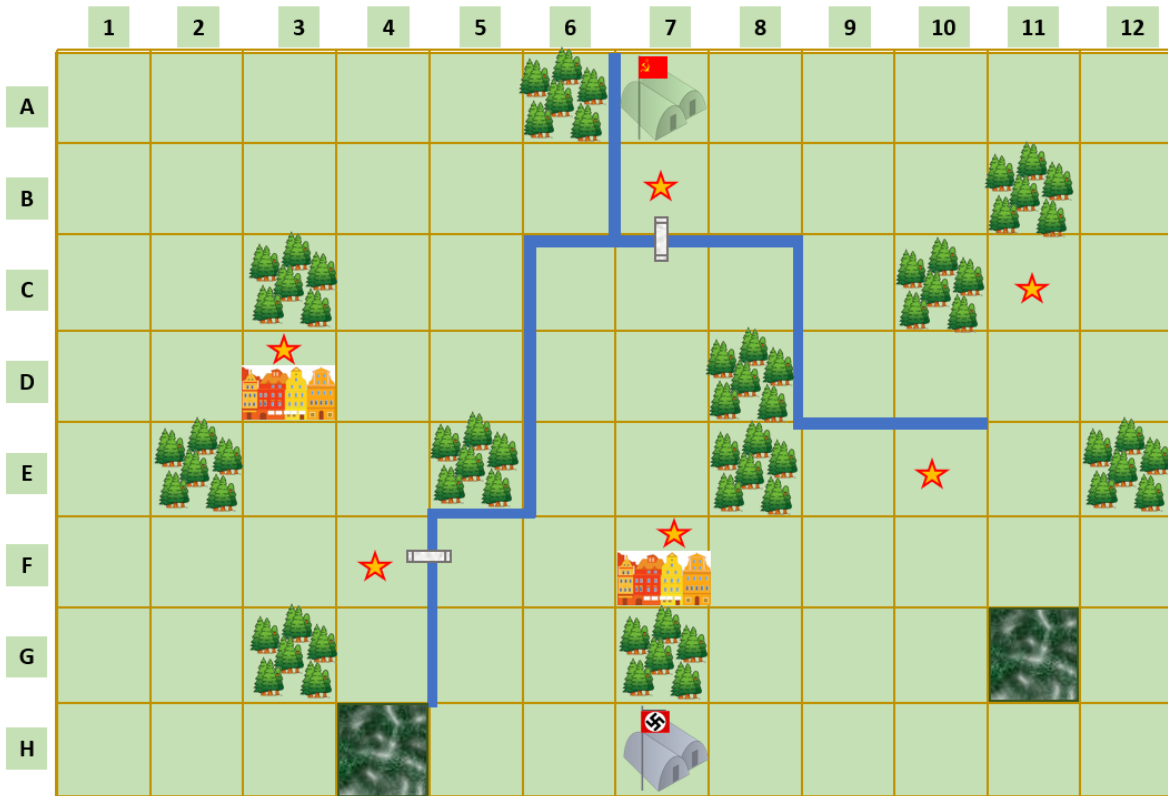


Operation Rummyantsev – III Panzer Corps 10 August 1943



The weather is clear. Objective squares are denoted by stars. The rivers shown are at this time of year nearly dry ravines in the plain. They can be crossed but it is slow to do so with vehicles. Units can cross the rivers at any point, but crossing them is like moving into non open terrain, units can only move a maximum of 1 square. Additionally any unit attacking across the river is vulnerable in combat. Units can cross rivers using road movement but pay 2 ops as for crossing a bridge. Supply lines can cross the rivers anywhere. The dark green squares are swamps and count as soft ground.

Starting Ops:

The Soviets start with 6 Ops and the Germans start with 6 Ops. Both sides use their mid war ops. The Soviets cannot use the 'All Workers to the Front' event in this scenario.

Description:

Operation Rummyantsev was one of number of major Soviet offensives launched after the battle of Kursk ground to a halt. This operation was aimed at bludgeoning its way to Kharkov from the North. The German forces struggled to hold a coherent front and at times looked on the verge of collapse. South of Zolochiv two Soviet tank corps cut into the III Panzer Corps leading to a counter attack to re-establish the front.

Victory:

The game is a standard single day of 16 moves. The Germans need to be holding the most objectives at the end of the 16th turn to win.

ROMMEL SCENARIO

Elements:

The Axis have 2 Elements; the 3rd Panzer Division and the 2nd SS Panzer Division, Das Reich. The corps support Sturmgeschutz battalion can support units of both Panzer Divisions without penalty.

The Soviets have 6 Elements; 4 Brigades of the 29th Tank Corps and 2 Brigades of the 18th Tank Corps. Each Tank Corps has its own corps support units which can support units of their own corps without penalty.

Set Up:

Soviet: The Russians deploy in lines A and B and in lines C to F in columns 3 to 10. The Russians deploy first.

Axis: The 3rd Panzer division deploys in columns 1 and 2 and line H1 to H6. Das Reich deploys in columns 11 and 12 and line H7 to H12. The Germans cannot deploy in a square already occupied by any Russian units. The German Corps support can be deployed in either deployment area.

AXIS FORMATIONS	COMBAT	ARMOUR	SPECIAL
3rd Panzer Division			
1 x Light Tank	5-4-3	1	Recon
2 x Panzer IV	5-4-3	4	
3 x Panzer III	5-4-3	3	
2 x Panzergrenadier	4-3-2		Armoured
3 x Motorised Infantry	4-3-2		Motorised
1 x Motorised Infantry	4-3-2		Motorised, Anti-tank
1 x Nebelwerfer	3 / 5 / [0-1]		Rocket Artillery
1 x Wespe	12 / 3 / [0-2]		Self Propelled Artillery
Das Reich			
1 x Light Tank	5-4-3	1	Recon
1 x Tiger	5-4-3	6	
2 x Panzer IV	5-4-3	3	
3 x Panzergrenadier Units	4-3-2		Armoured
2 x Motorised Infantry	4-3-2		Motorised
1 x Motorised Infantry	4-3-2		Motorised, Anti-tank
1 x Marder	2-1-1	1-4	
1 x Nebelwerfer	3 / 5 / [0-1]		Rocket Artillery
1 x Hummel	16 / 4 / [0-2]		Self Propelled Artillery
Corps Support			
3 x Stug	5-4-3	3-4	

ROMMEL SCENARIO

SOVIET FORMATIONS	COMBAT	ARMOUR	SPECIAL
29th Tank Corps			
25th Tank Brigade			
1 x Light Tanks	3-2-1	1	Recon
3 x T-34	3-2-1	3	
2 x Motor Rifle Infantry	4-3-2		Motorised
31st Tank Brigade			
1 x KV-1	3-2-1	3	
2 x T-34	3-2-1	3	
2 x Motor Rifle Infantry	4-3-2		Motorised
32nd Tank Brigade			
1 x KV-1	3-2-1	3	
2 x T-34	3-2-1	3	
2 x Motor Rifle Infantry	4-3-2		Motorised
53rd Motor Rifle Brigade			
6 x Motor Rifle Infantry	4-3-2		Motorised
29th Corps Support			
1 x 76mm Artillery	8 / 2 / [0-1]		Motorised
1 x Katyusha	4 / 4 / [0-1]		Self Propelled, Rockets
18th Tank Corps			
Tank Brigade 1			
1 x Light Tanks	3-2-1	1	Recon
2 x T-34	3-2-1	3	
2 x Motor Rifle Infantry	4-3-2		Motorised
Tank Brigade 2			
3 x T-34	3-2-1	3	
2 x Motor Rifle Infantry	4-3-2		Motorised
18th Corps Support			
1 x 76mm Artillery	8 / 2 / [0-1]		Motorised
1 x Katyusha	4 / 4 / [0-1]		Self Propelled, Rockets
1 X SU 76	2-1-1	1-3	

Axis	1	3	5	7	9	11	13	15
Soviet	2	4	6	8	10	12	14	16