

CHECK OUT  
HOW IT ALL BEGAN  
BY FLASHING THE QR CODE...

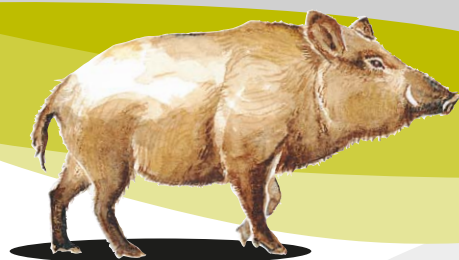


# WILD PIG

P A Y S D ' O C

IN THIS  
TYPICAL  
VILLAGE

WHERE DOES  
GRETA  
LIVE?



## SAUVIGNON BLANC

### LOCATION

Located in the Languedoc area, the vineyards spread from the banks of the Rhône river in the East to the city of Carcassonne in the West, from the foothills of the Massif Central mountains in the North to the Mediterranean Sea in the South.

### VINIFICATION

- Harvesting is done in the early morning, during the coolest period of the day.
- The grapes are de-stemmed, crushed and pressed in modern pneumatic presses.
- The must is refrigerated and allowed to settle for 24 to 48 hours.
- The clear juice is drawn off and fermented using selected yeast.
- Temperature is regularly controlled to ensure that it does not exceed 16°C (60.8°F).
- The wine is cold-filtered to avoid malolactic fermentation.

### TASTING NOTES

Pale gold colour with bright green tints, a fruity nose of grapefruit and passion fruit with a fresh and subtle finish.

### WINE WAITER'S ADVICE

Best when served cool between 10-12°C (50-52°F).  
Delicious by itself or with grilled fish, seafood and summer salads.  
Enjoy now and over the next 2 years.



WHAT DOES  
GRETA  
EAT?

NOT  
OUR  
GRAPES



wildpigwines  
[www.wildpigwines.com](http://www.wildpigwines.com)