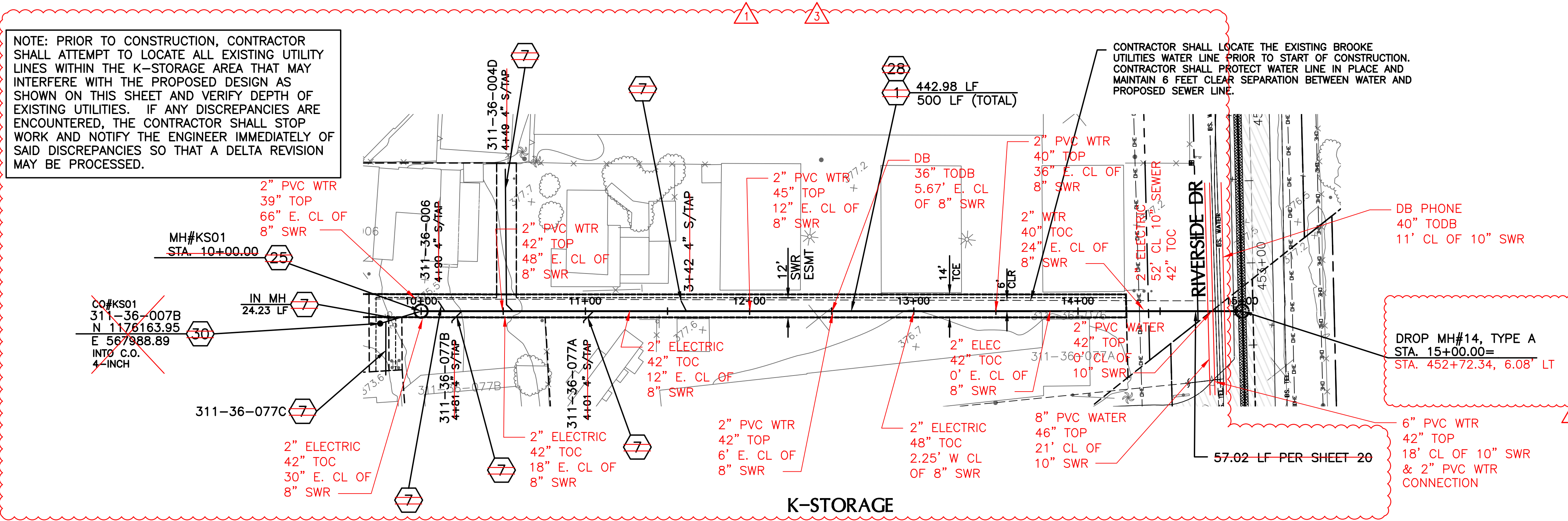


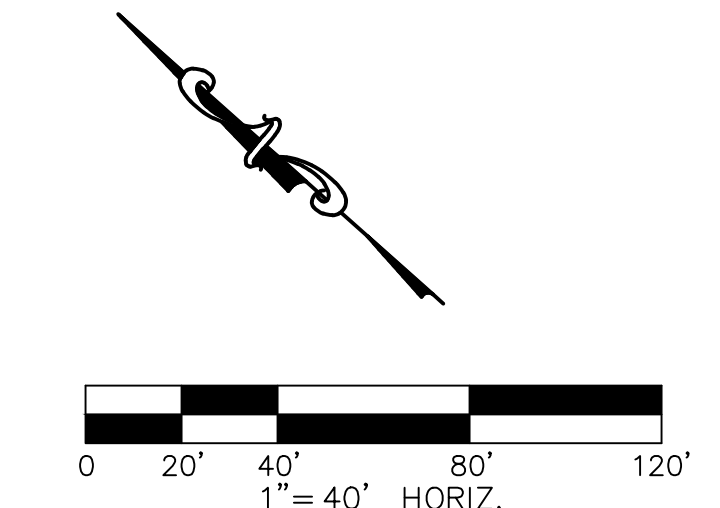
NOTE: PRIOR TO CONSTRUCTION, CONTRACTOR SHALL ATTEMPT TO LOCATE ALL EXISTING UTILITY LINES WITHIN THE K-STORAGE AREA THAT MAY INTERFERE WITH THE PROPOSED DESIGN AS SHOWN ON THIS SHEET AND VERIFY DEPTH OF EXISTING UTILITIES. IF ANY DISCREPANCIES ARE ENCOUNTERED, THE CONTRACTOR SHALL STOP WORK AND NOTIFY THE ENGINEER IMMEDIATELY OF SAID DISCREPANCIES SO THAT A DELTA REVISION MAY BE PROCESSED.

CONTRACTOR SHALL LOCATE THE EXISTING BROOKE UTILITIES WATER LINE PRIOR TO START OF CONSTRUCTION. CONTRACTOR SHALL PROTECT WATER LINE IN PLACE AND MAINTAIN 6 FEET CLEAR SEPARATION BETWEEN WATER AND PROPOSED SEWER LINE.



**SEWER CONSTRUCTION NOTES**

- ① INSTALL 8" PVC SEWER
- ⑦ INSTALL 4" BLDG CONNECTION
- ②⑤ INSTALL 4' DIA. MH PER MAG STD. 420-1,2 W/ 24" DIA. WATERTIGHT FRAME & COVER PER MAG STD. 424-1
- ②⑧ TRENCH PER DETAIL ON SHEET 44.
- ③⑩ INSTALL CLEANOUT PER MAG STD. DET. 441, SIZE PER PLAN



- ① INDICATE AREAS OF SEWER NOT INSTALLED PER WCD #5
- ② (JGE) REVISED MH STATIONS, ELEVATIONS, SLOPES AND DISTANCES
- ③ (CNB) POTHOLE INFORMATION

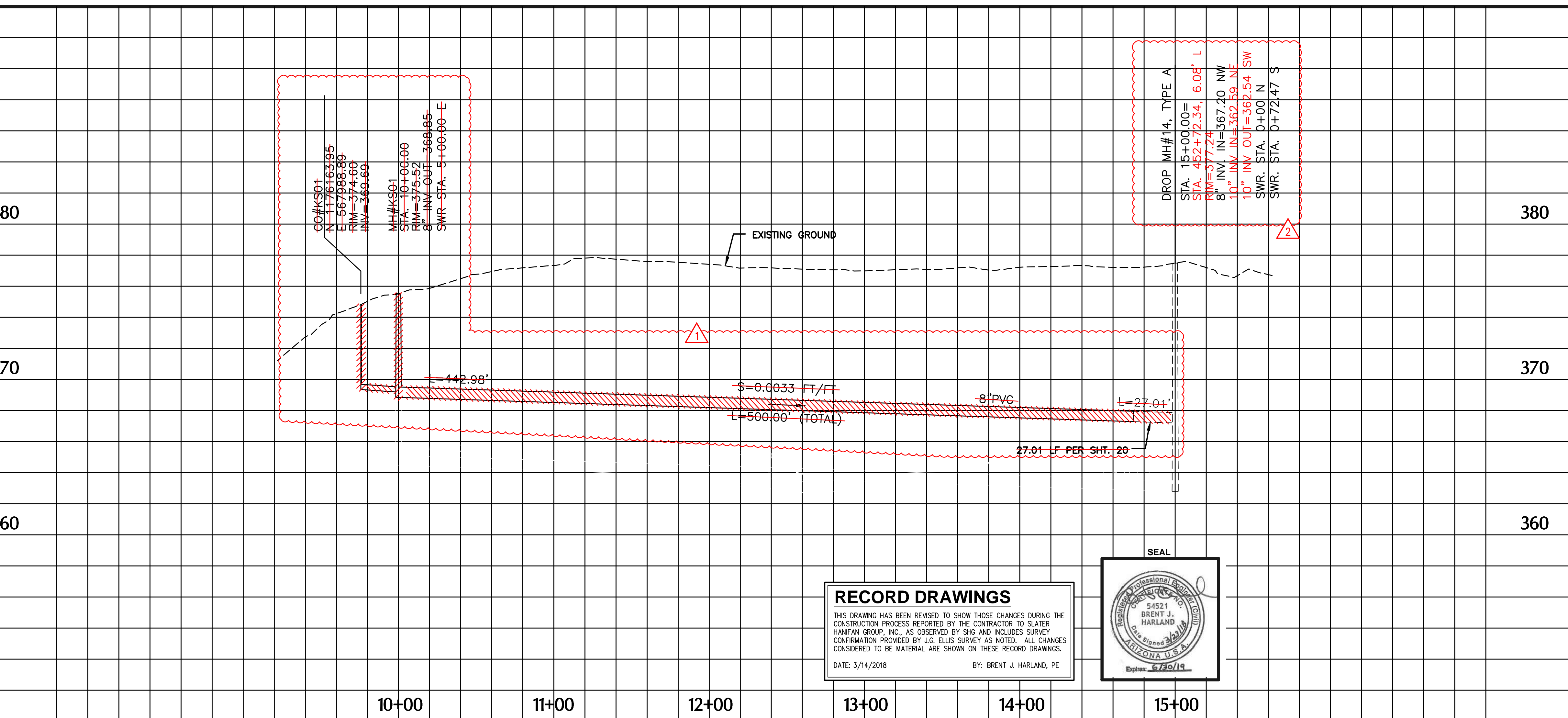
NOTE: CONTRACTOR SHALL ALLOW FOR INGRESS/EGRESS AT ALL TIMES DURING CONSTRUCTION.

NOTE: TAPS SHOWN ON PLANS ARE FOR ILLUSTRATION PURPOSES ONLY. FINAL LOCATIONS WILL BE DETERMINED IN THE FIELD.

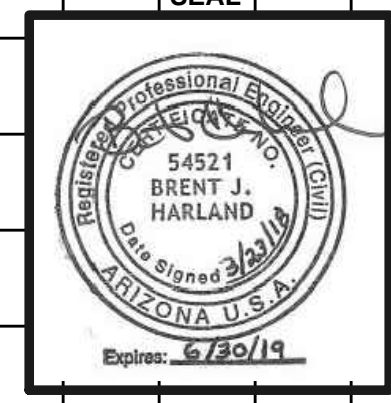
NOTE: CONTRACTOR SHALL USE EXTREME CAUTION WHEN IDENTIFYING, UNCOVERING AND HANDLING ALL UTILITIES.

NOTE: INFORMATION ON THE PRESENCE AND LOCATION OF UTILITIES IS VERY LIMITED IN THIS COMMUNITY. IT IS THE CONTRACTOR'S RESPONSIBILITY TO VERIFY THE PRESENCE OF AND TO PROTECT ANY OVERHEAD AND UNDERGROUND UTILITIES OR STRUCTURES PRIOR TO COMMENCEMENT OF CONSTRUCTION, WHETHER OR NOT SAID UTILITIES ARE SHOWN ON THESE PLANS. WHERE REQUIRED, CONTRACTOR SHALL MAKE EXPLORATORY EXCAVATIONS TO LOCATE UNDERGROUND UTILITIES OR STRUCTURES.

NOTE: BUCKSKIN SANITARY DISTRICT HAS MADE EVERY ATTEMPT, UTILIZING STANDARD ENGINEERING PRACTICES, TO DESIGN THE BACKBONE SEWER IN PHASE 4 TO ALLOW THE MAJORITY OF THE PROPERTIES LOCATED WITHIN PHASE 4 TO CONNECT BY MEANS OF GRAVITY. HOWEVER, THERE MAY BE CIRCUMSTANCES THAT REQUIRE CERTAIN PROPERTIES TO CONNECT VIA PUMPING SYSTEMS. CONTRACTORS MAKING BUILDING CONNECTIONS FOR INDIVIDUAL PROPERTY OWNERS TO DISTRICT FACILITIES SHALL VERIFY HORIZONTAL AND VERTICAL CONNECTION PRIOR TO THE START OF CONSTRUCTION. A SEWER CONNECTION PERMIT IS REQUIRED PRIOR TO CONSTRUCTION.



**RECORD DRAWINGS**  
 THIS DRAWING HAS BEEN REVISED TO SHOW THOSE CHANGES DURING THE CONSTRUCTION PROCESS REPORTED BY THE CONTRACTOR TO SLATER HANFAN GROUP, INC., AS OBSERVED BY SHG AND INCLUDES SURVEY CONFIRMATION PROVIDED BY J.G. ELLIS SURVEY AS NOTED. ALL CHANGES CONSIDERED TO BE MATERIAL ARE SHOWN ON THESE RECORD DRAWINGS.  
 DATE: 3/14/2018 BY: BRENT J. HARLAND, PE



REVISIONS	BY	DATE

