

trustees **t** ONE  
WATERFRONT

PIERSPAC  
11.16.21



West Cove

HARBOR

Existing Pier Footprint

+16.5

Osprey Isle

Salt Marsh

Skyline View Lawn

+20

Tide Pool

+6

Pinnacle

+32

Harbor View Lawn

Coastal Escarpment

Picnic Grove

+22

Salt Marsh

Sailing Center

Kayak Launch

East Cove

BOSTON HARBOR

0 20 50 100'



MLLW: +1.0  
MHHW: +11.3  
HAT: +13.4  
Max Tide: +16.2



WE ARE LISTENING!

**Over 1,000 community survey responses!**

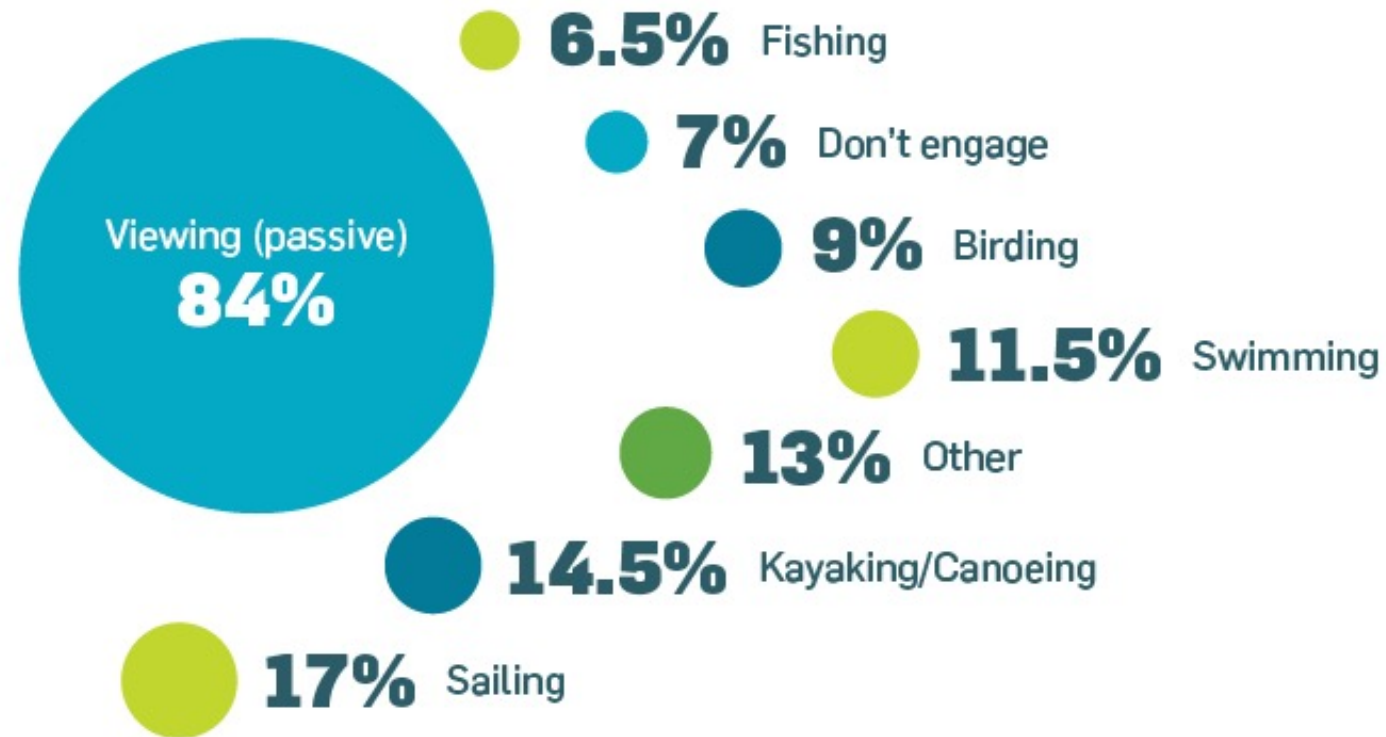


*Image courtesy Above Summit*



## How do you typically engage with Boston Harbor?

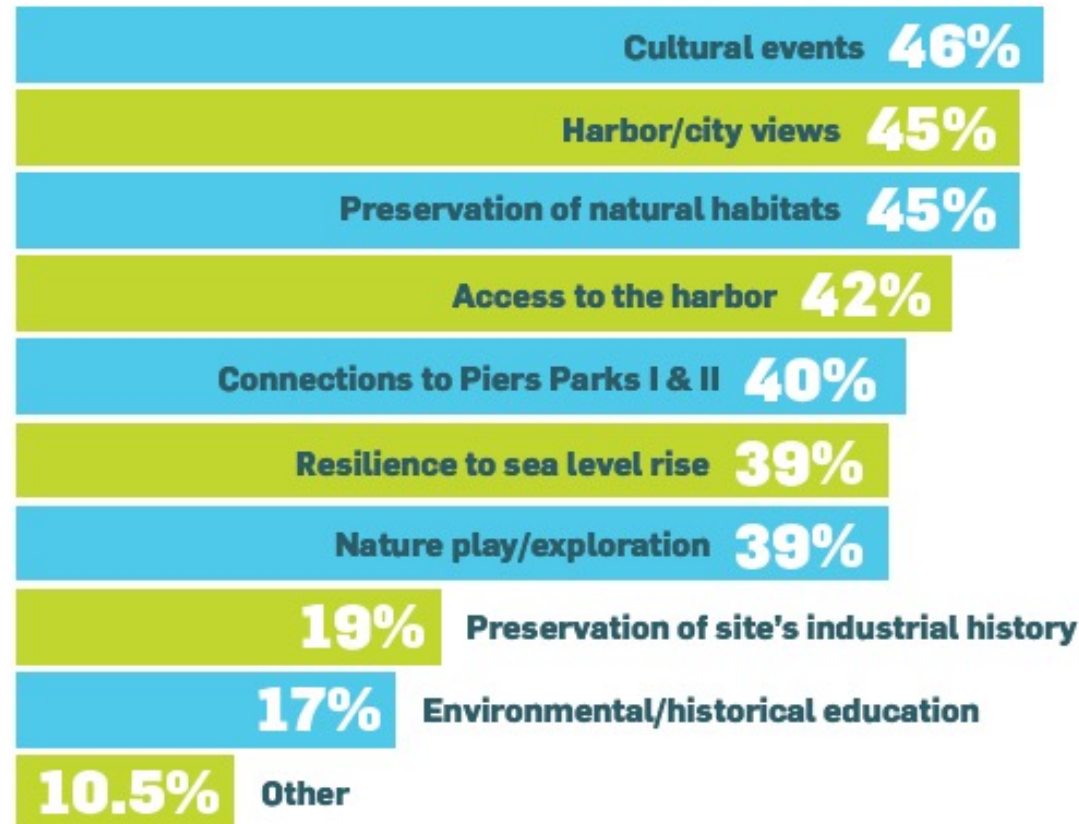
AN AREA OF OPPORTUNITY: Though many write-ins requested swimming, kayaking and sailing when asked about programming in the future park, the overwhelming majority (91%) of respondents currently interact with the harbor in only a passive manner, or don't engage with it at all.



## WE ARE LISTENING!

### What are your top 3 most important design aspects for Piers Park III?

RESIDENTS VALUE THE POSSIBILITIES THAT THE SITE PROVIDES: The unique location of the future waterfront park offers many opportunities to enjoy the space, which respondents recognize—with a nearly 7-way tie in top responses.



WE ARE LISTENING!

**What types of programming would attract you to Piers Park III?**

FUN FOR THE WHOLE FAMILY: Cultural events and nature play topped the list of programming, with frequent "other" write-in responses including music, concerts, and boating.

Cooking & food  
Educational—kids  
Fitness MUSIC  
Cultural BOATING  
Nature play  
SWIMMING  
Educational—adults

# Phase 3 Project Schedule

- **Schematic Design (30%) | 4 Months | Oct 12, 2021 - Feb 11, 2022**
- **Design Development (60%) | 5 Months | Feb 14, 2022 - July 21, 2022**
- **Construction Documentation (100%) | 6 Months | Aug 2022 - Feb 2023**
- **Bidding | 3 Months | March 2023 - May 2023**
- **Construction | Apx. 18 Months | June 2023 - Nov 2024**

# Phase 3 Project Schedule

- **Schematic Design (30%) | 4 Months | Oct 12, 2021 - Feb 11, 2022**

- 1 Massport Review December 2021
- 1 PiersPAC Review January 2022
- 1 Community Review January 2022
- Fund Raising Presentations Ongoing
- Permitting Ongoing
- 50% SD Submission December 19, 2021
- 100% SD Submission February 11, 2022

- Design Development (60%) | 5 Months | Feb 14, 2022 - July 22, 2022

- Construction Documentation (100%) | 6 Months | Aug 2022 - Feb 2023

- Bidding | 3 Months | March 2023 - May 2023

- Construction | Apx. 18 Months | June 2023 - Nov 2024



# Phase 3 Project Schedule

- Schematic Design (30%) | 4 Months | Oct 12, 2021 - Feb 11, 2022
- **Design Development (60%) | 5 Months | Feb 14, 2022 - July 22, 2022**
  - 2 Massport Reviews Mar 2022 / June 2022
  - 2 PiersPAC Reviews Apr 2022 / July 2022
  - 2 Community Reviews Apr 2022 / July 2022
  - Fund Raising Presentations Ongoing
  - Permitting Ongoing
  - 50% DD Submission May 20, 2022
  - 100% DD Submission July 22, 2022
- Construction Documentation (100%) | 6 Months | Aug 2022 - Feb 2023
- Bidding | 3 Months | March 2023 - May 2023
- Construction | Apx. 18 Months | June 2023 - Nov 2024

# Phase 3 Project Schedule

- Schematic Design (30%) | 4 Months | Oct 12, 2021 - Feb 11, 2022
- Design Development (60%) | 5 Months | Feb 14, 2022 - July 22, 2022
- **Construction Documentation (100%) | 6 Months | Aug 2022 - Feb 2023**
  - 2 Massport Reviews Oct 2022 / Jan 2023
  - 2 PiersPAC Reviews Oct 2022 / Jan 2023
  - 2 Community Reviews Oct 2022 / Jan 2023
  - Fund Raising Presentations Ongoing
  - Permitting Ongoing
  - 60% CD Submission November 2022
  - 90% CD Submission December 2022
  - 100% CD Submission February 2023
- Bidding | 3 Months | March 2023 - May 2023
- Construction | Apx. 18 Months | June 2023 - Nov 2024



# Phase 3 Project Schedule

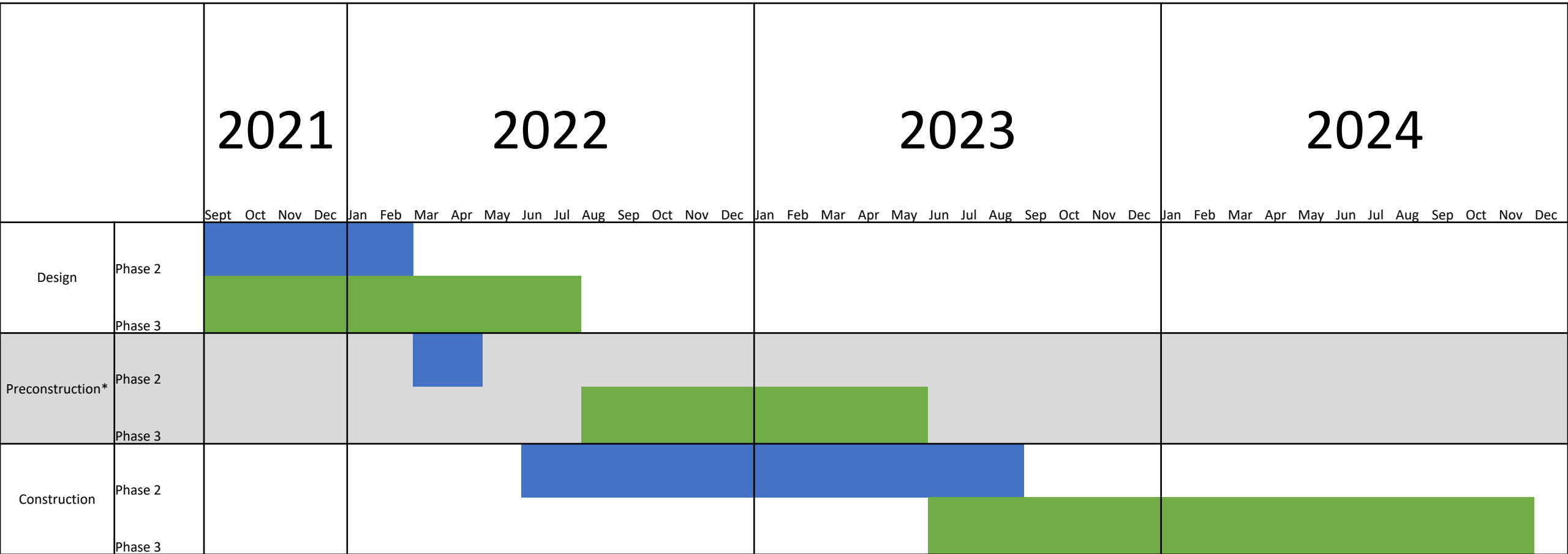
- Schematic Design (30%) | 4 Months | Oct 12, 2021 - Feb 11, 2022
- Design Development (60%) | 5 Months | Feb 14, 2022 - July 22, 2022
- Construction Documentation (100%) | 6 Months | Aug 2022 - Feb 2023
- **Bidding | 3 Months | March 2023 - May 2023**
- Construction | Apx. 18 Months | June 2023 - Nov 2024

# Phase 3 Project Schedule

- Schematic Design (30%) | 4 Months | Oct 12, 2021 - Feb 11, 2022
- Design Development (60%) | 5 Months | Feb 14, 2022 - July 22, 2022
- Construction Documentation (100%) | 6 Months | Aug 2022 - Feb 2023
- Bidding | 3 Months | March 2023 - May 2023
- **Construction | Apx. 18 Months | June 2023 - Nov 2024**
  - CM Input Needed
  - Assumes Overlap in Construction of Phases 2 and 3



CURRENT TIMELINE PHASE 2+3



\*Preconstruction includes all permitting, construction documentation and bidding