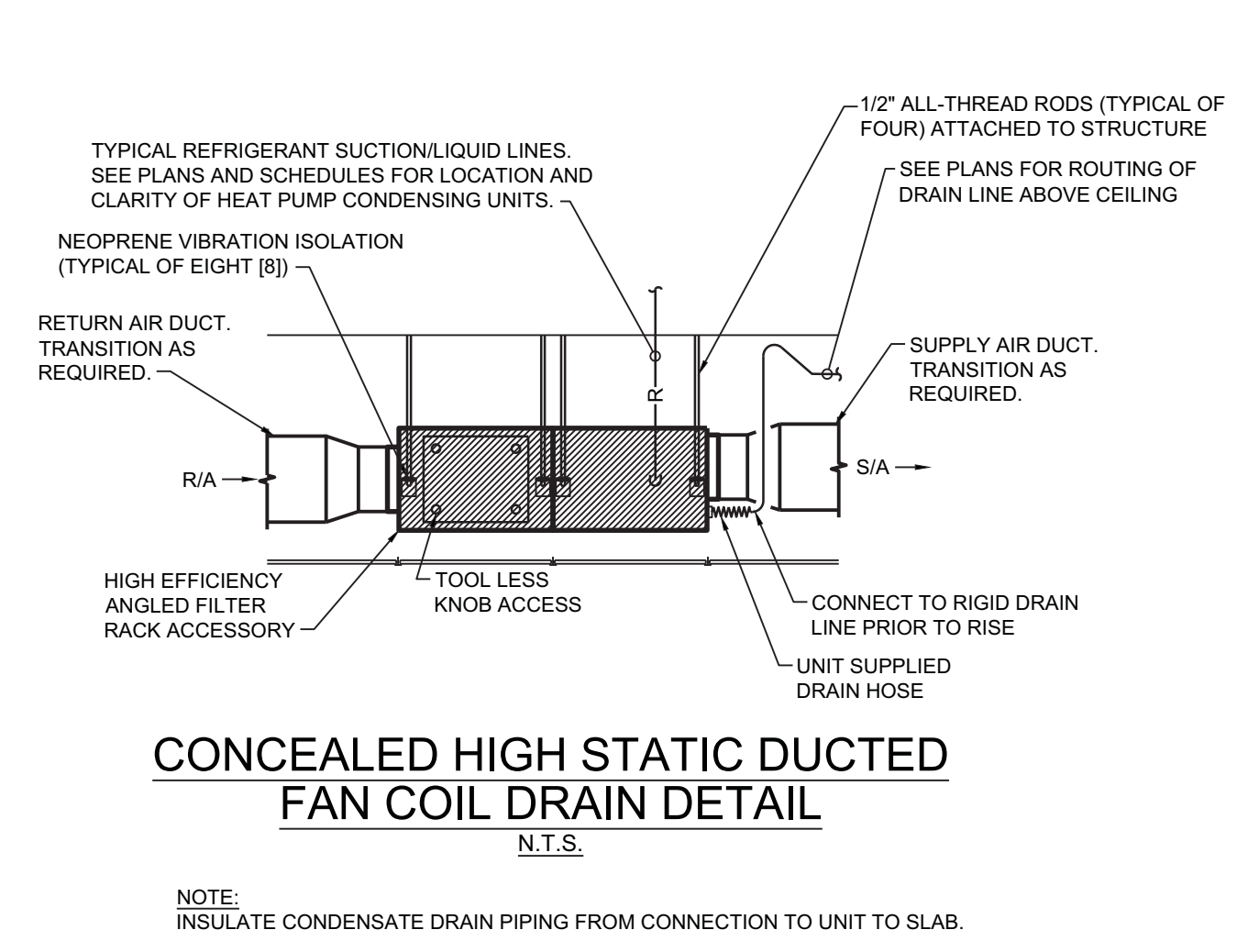
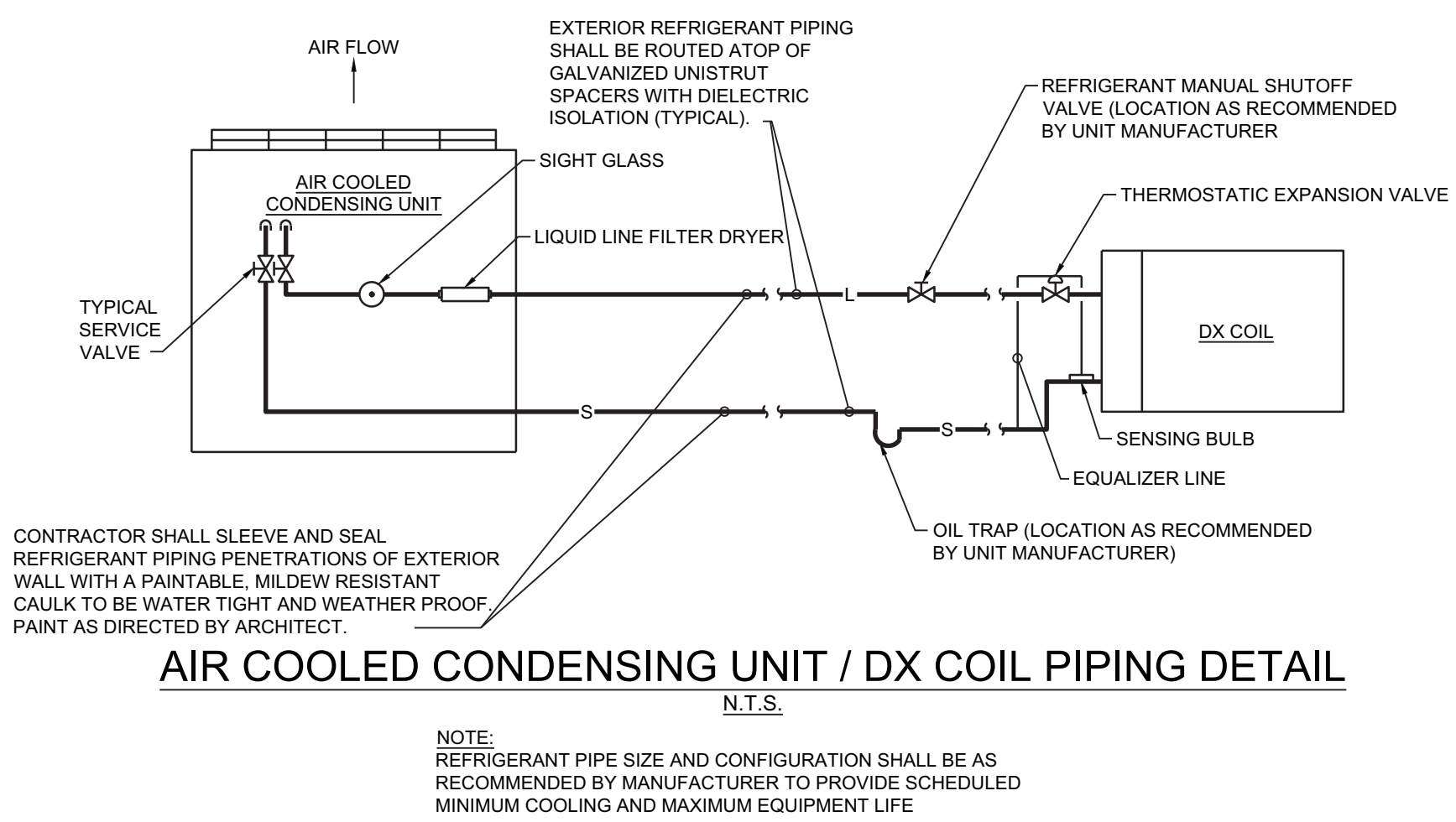


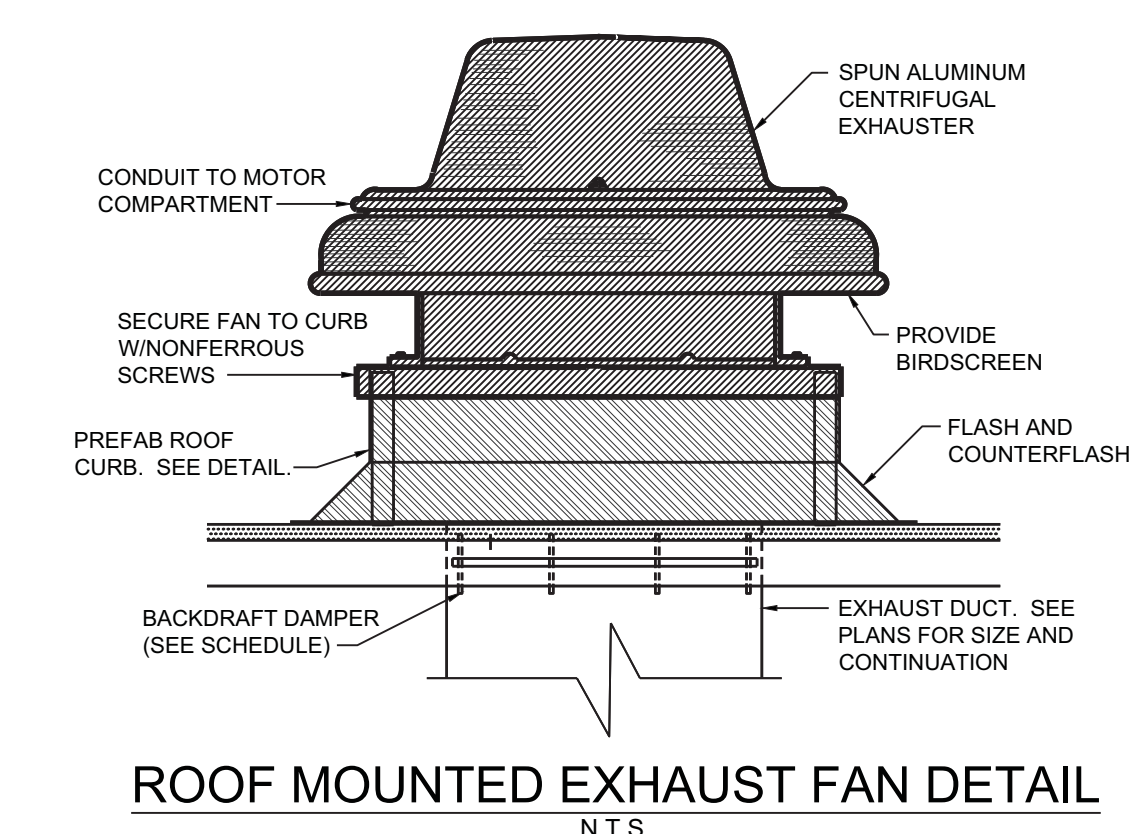
INDOOR HEAT PUMP FAN COIL DRAIN DETAIL
N.T.S.
NOTE: INSULATE CONDENSATE DRAIN PIPING FROM CONNECTION TO UNIT TO SLAB.



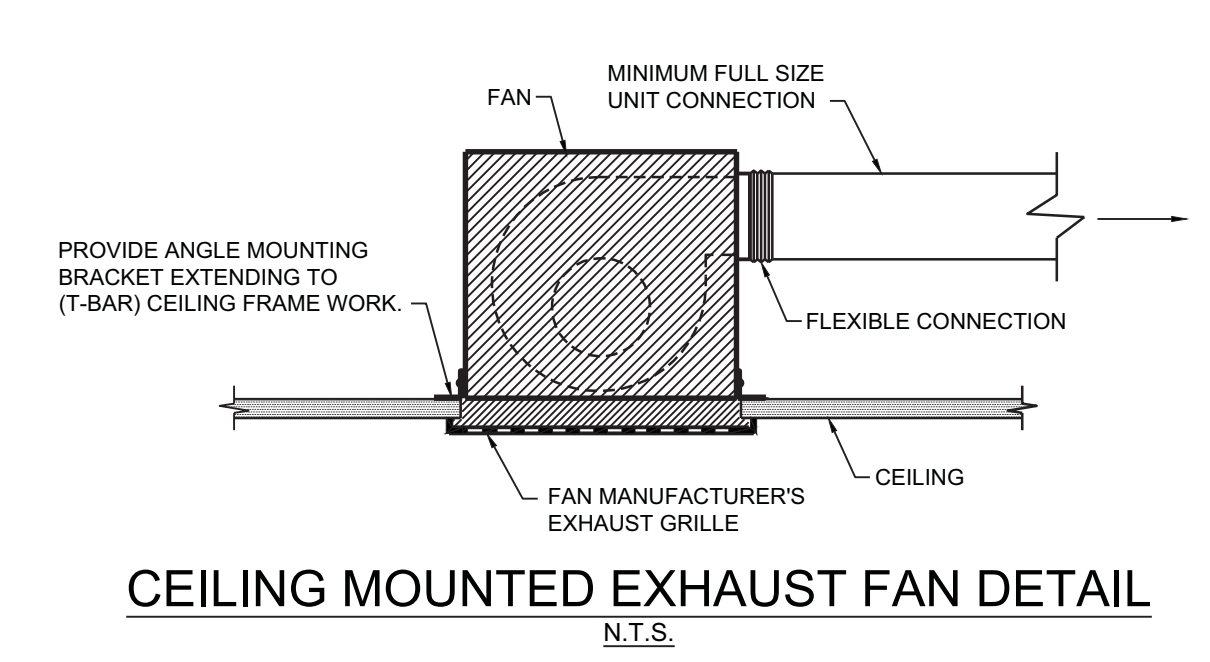
CONCEALED HIGH STATIC DUCTED FAN COIL DRAIN DETAIL
N.T.S.
NOTE: INSULATE CONDENSATE DRAIN PIPING FROM CONNECTION TO UNIT TO SLAB.



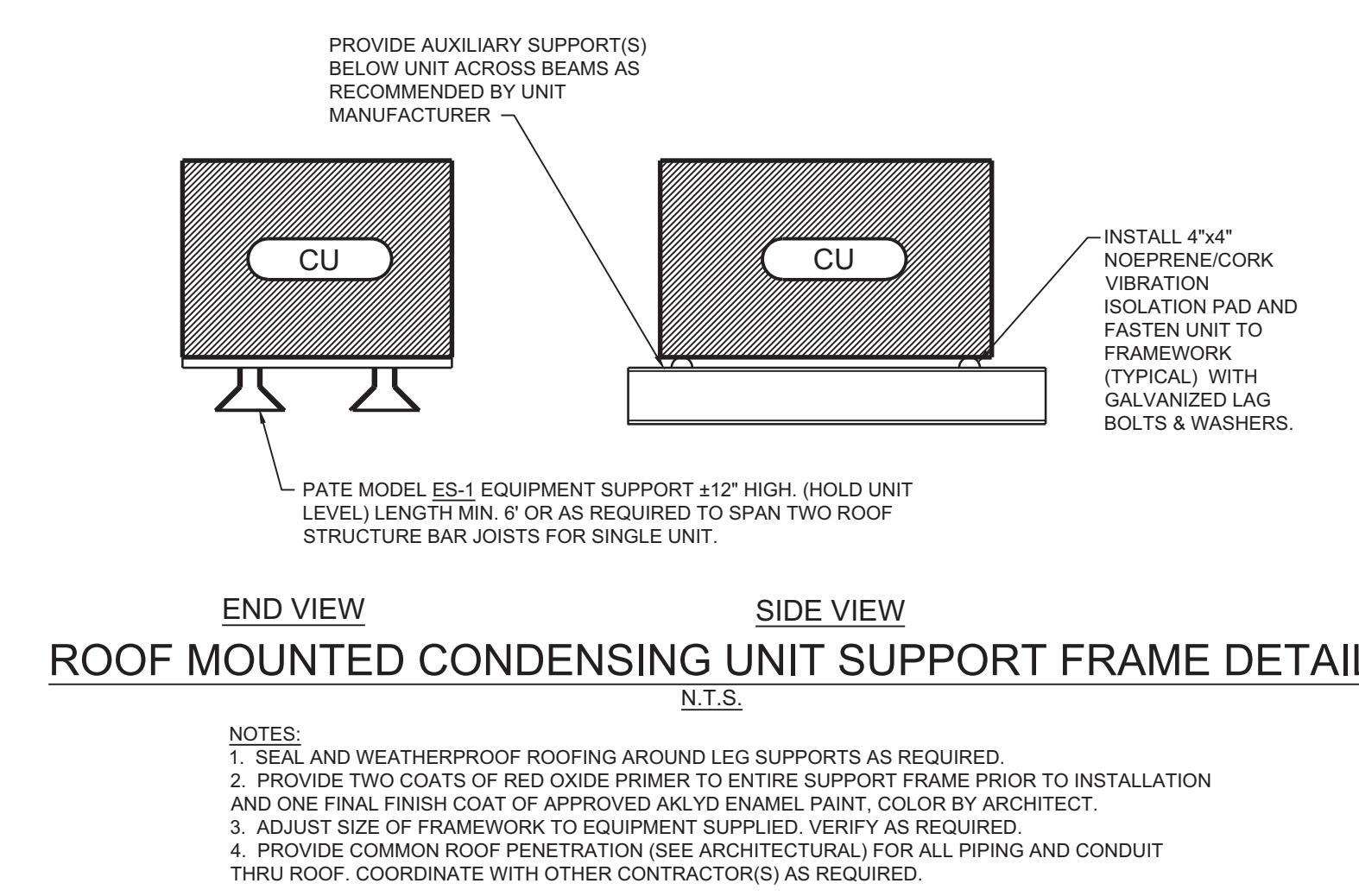
AIR COOLED CONDENSING UNIT / DX COIL PIPING DETAIL
N.T.S.
NOTE: REFRIGERANT PIPE SIZE AND CONFIGURATION SHALL BE AS RECOMMENDED BY MANUFACTURER TO PROVIDE SCHEDULED MINIMUM COOLING AND MAXIMUM EQUIPMENT LIFE.



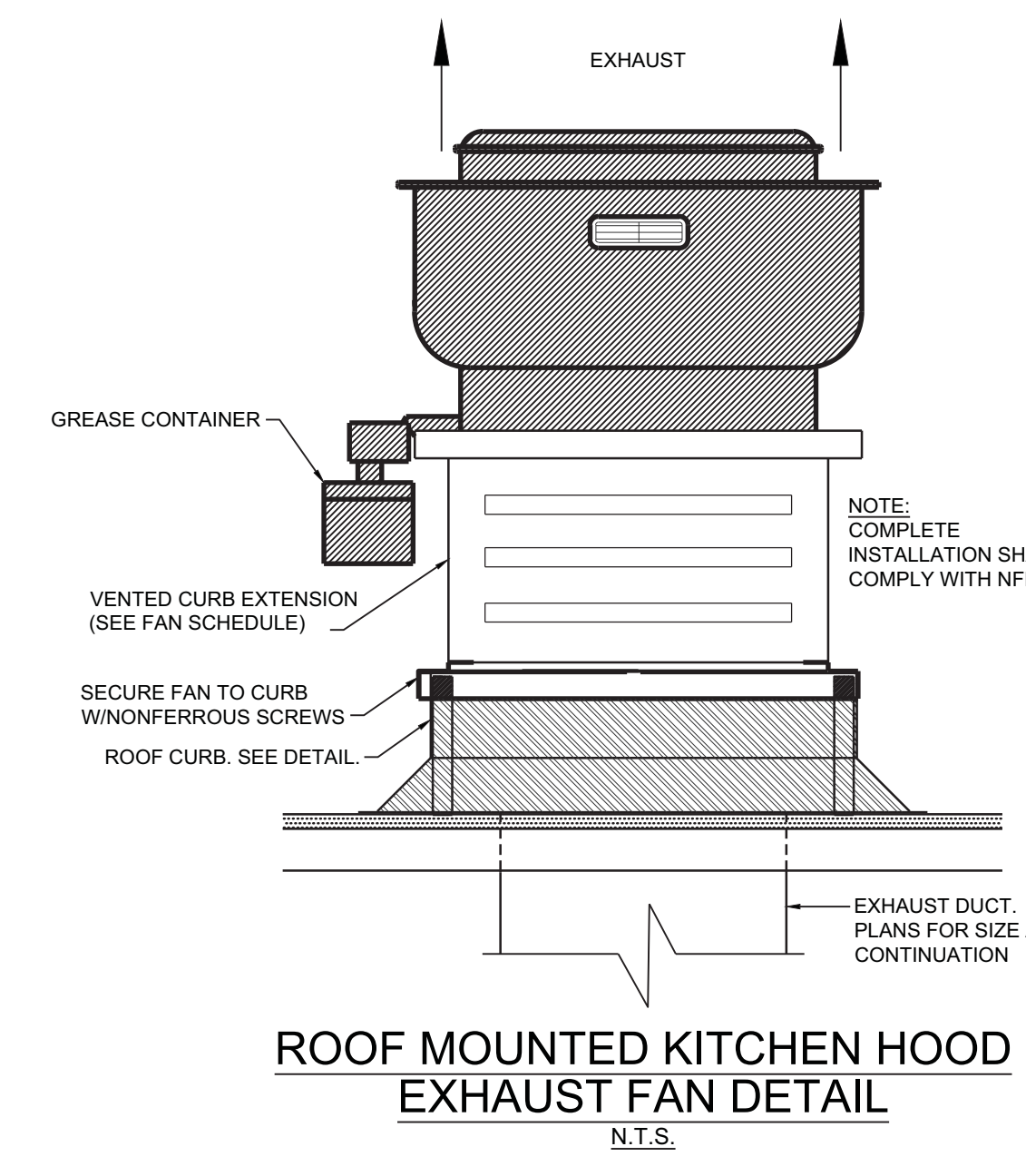
ROOF MOUNTED EXHAUST FAN DETAIL
N.T.S.



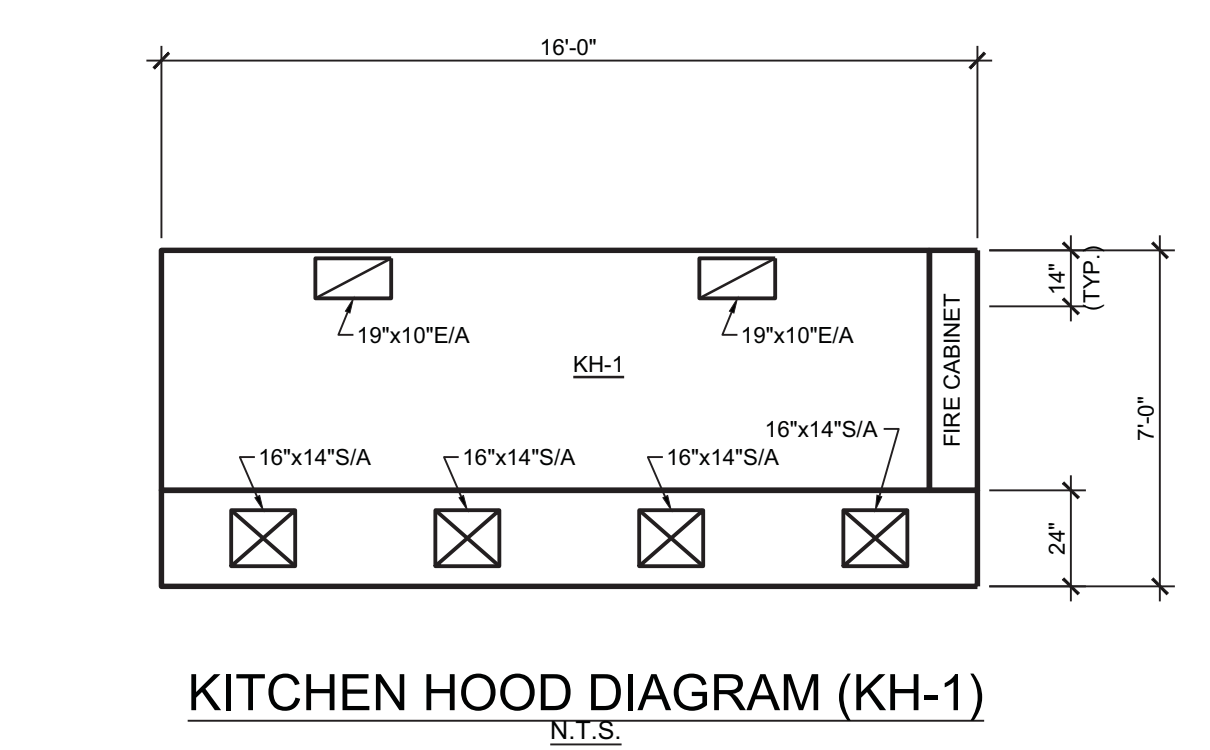
CEILING MOUNTED EXHAUST FAN DETAIL
N.T.S.



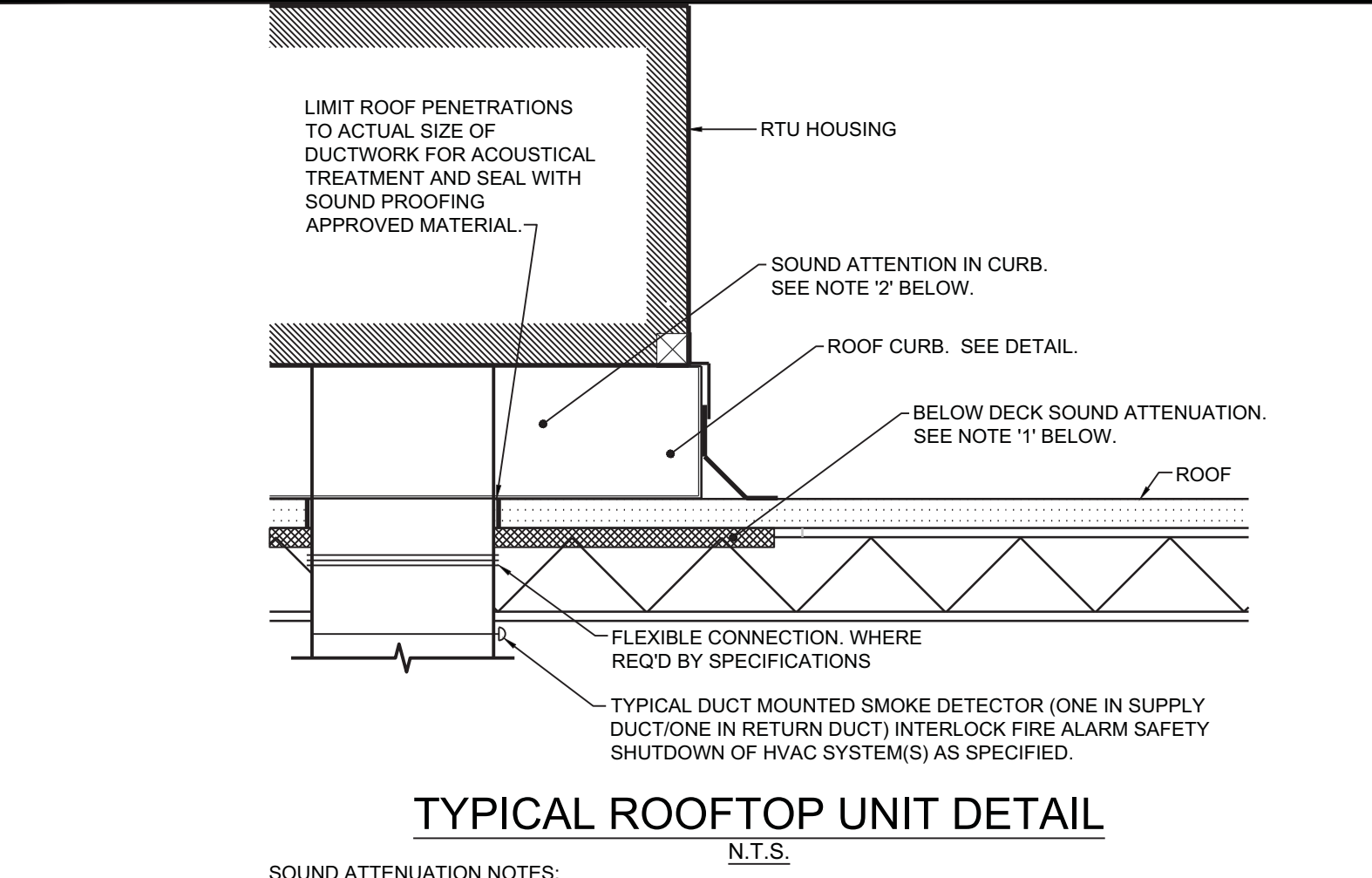
ROOF MOUNTED CONDENSING UNIT SUPPORT FRAME DETAIL
N.T.S.
NOTES:
1. SEAL AND WEATHERPROOF ROOFING AROUND LEG SUPPORTS AS REQUIRED.
2. PROVIDE TWO COATS OF RED OXIDE PRIMER TO ENTIRE SUPPORT FRAME PRIOR TO INSTALLATION AND ONE FINAL FINISH COAT OF APPROVED ENAMEL PAINT, COLOR BY ARCHITECT.
3. ADJUST SIZE OF FRAMEWORK TO EQUIPMENT SUPPLIED. VERIFY AS REQUIRED.
4. PROVIDE COMMON ROOF PENETRATION (SEE ARCHITECTURAL) FOR ALL PIPING AND CONDUIT THRU ROOF. COORDINATE WITH OTHER CONTRACTOR(S) AS REQUIRED.



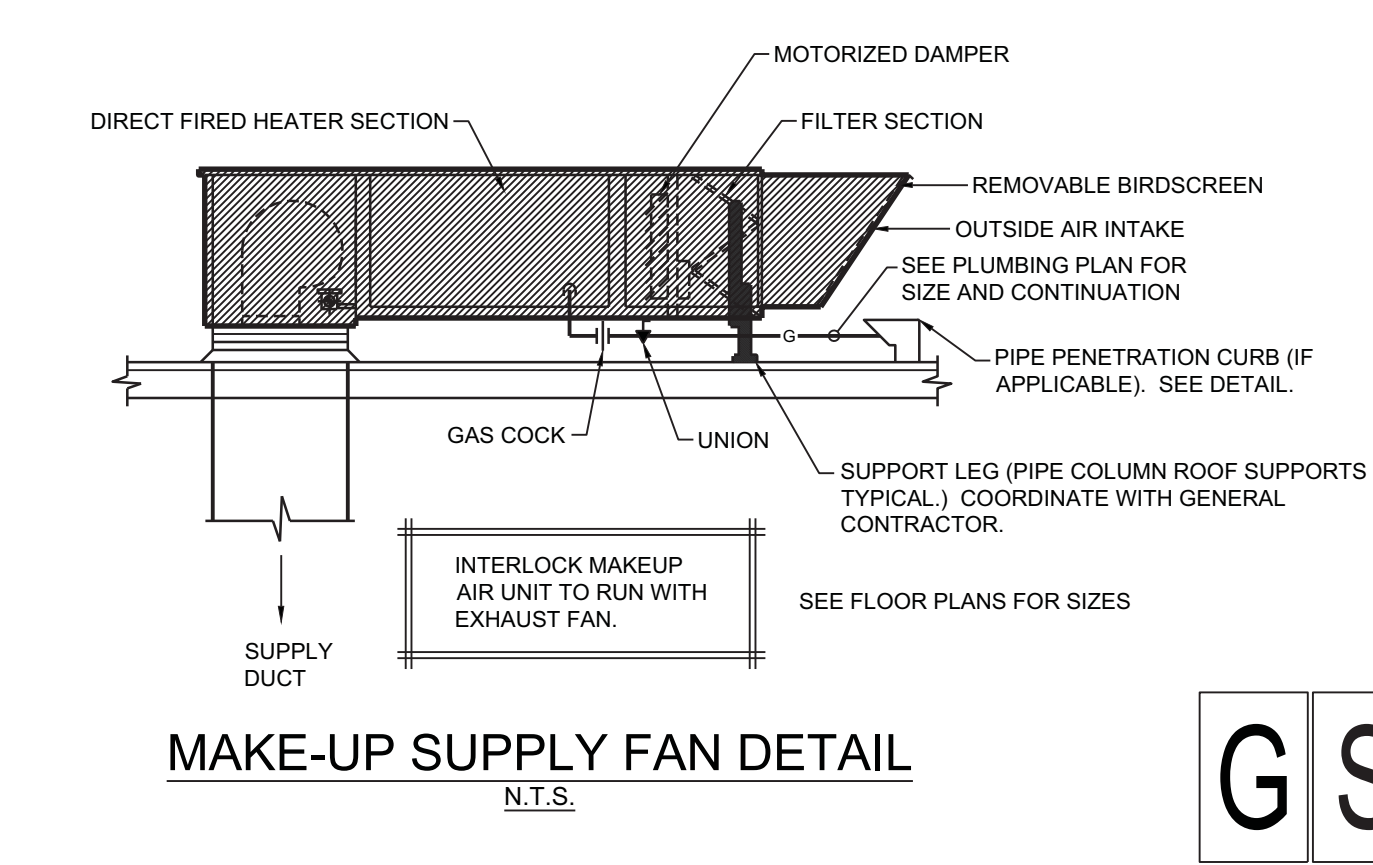
ROOF MOUNTED KITCHEN HOOD EXHAUST FAN DETAIL
N.T.S.



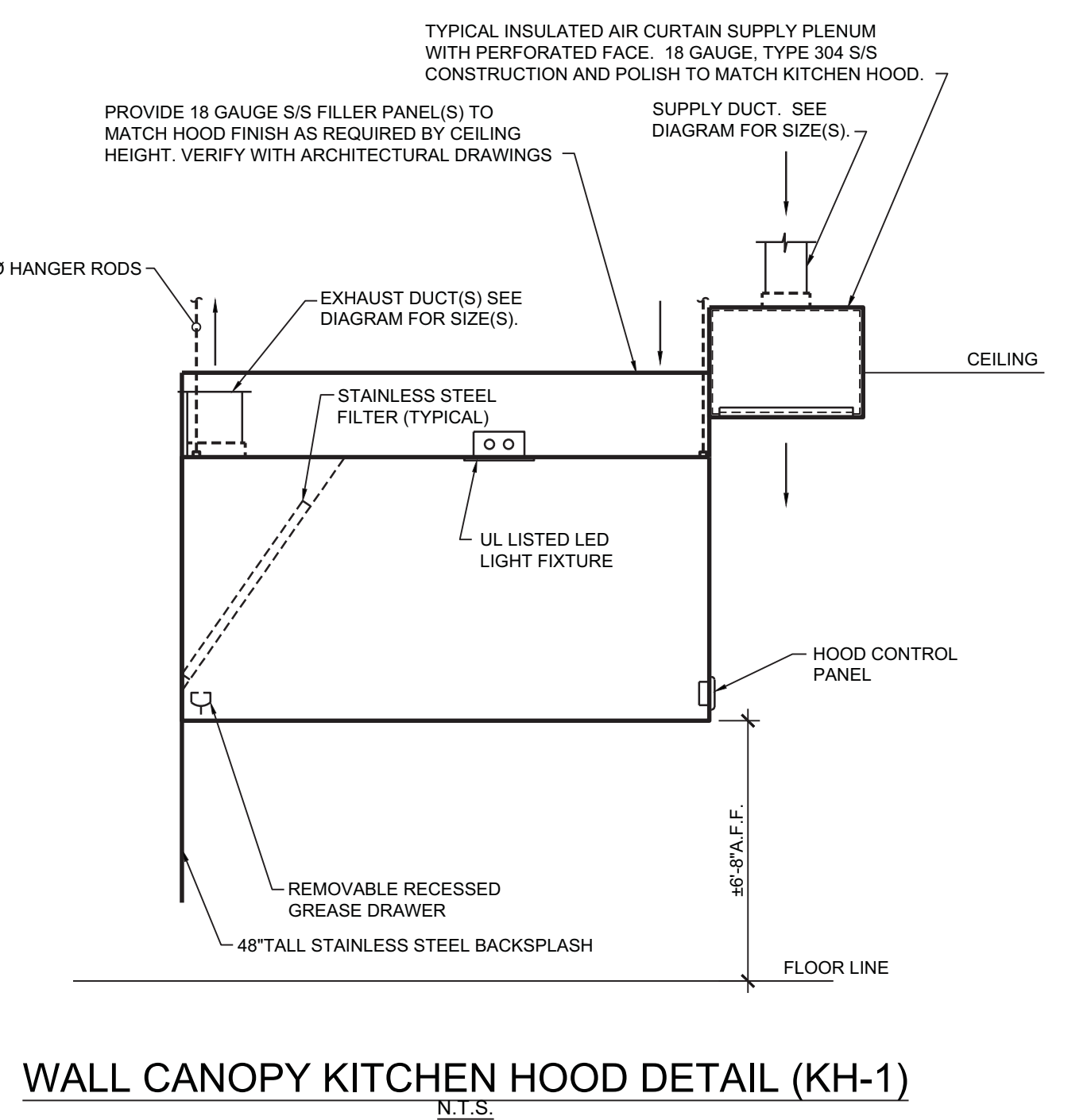
KITCHEN HOOD DIAGRAM (KH-1)
N.T.S.



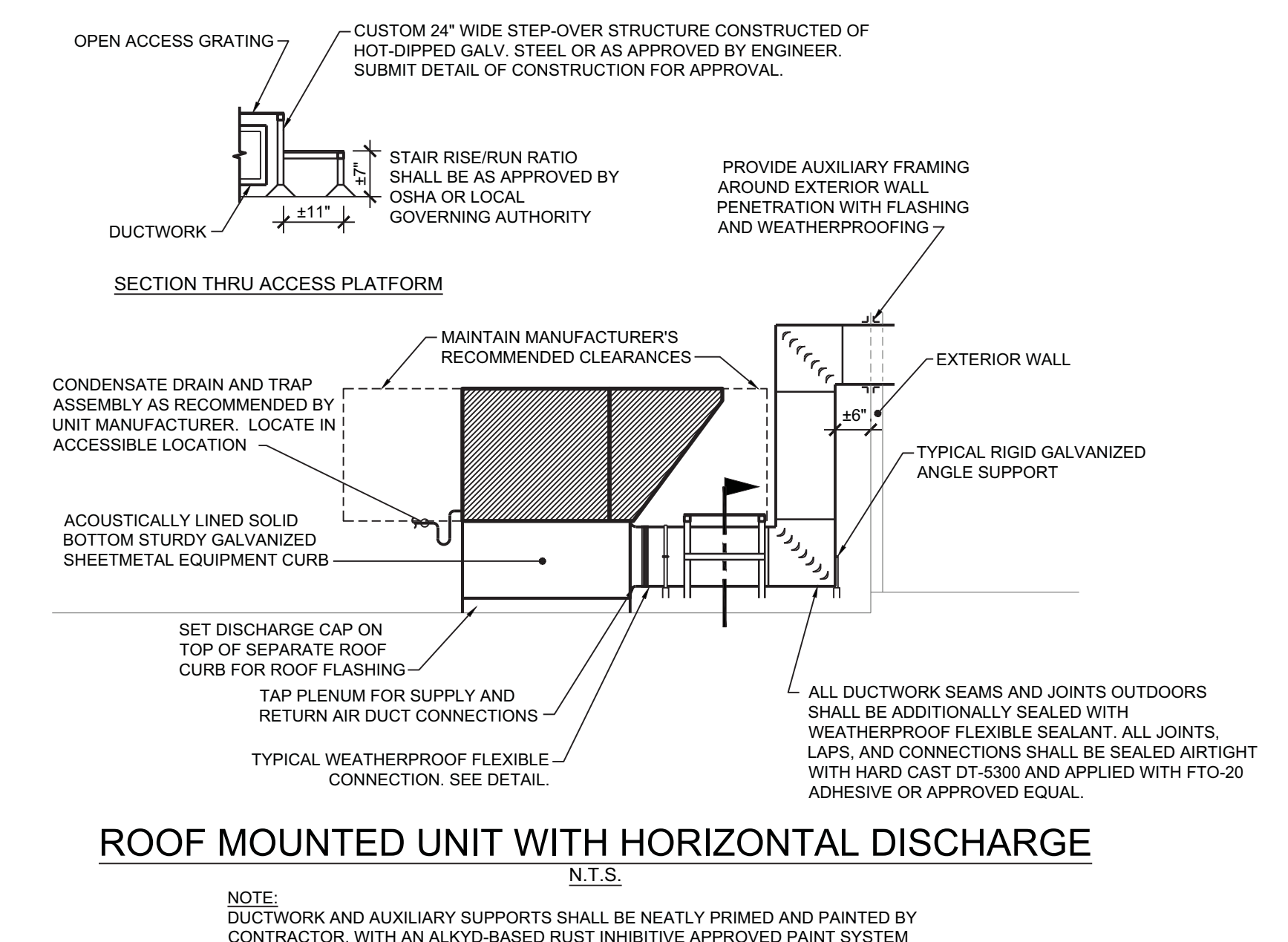
TYPICAL ROOFTOP UNIT DETAIL
N.T.S.
SOUND ATTENUATION NOTES:
1. BELOW DECK SOUND ATTENUATION SHALL BE COMPRISED OF 2\"/>



MAKE-UP SUPPLY FAN DETAIL
N.T.S.



WALL CANOPY KITCHEN HOOD DETAIL (KH-1)
N.T.S.



ROOF MOUNTED UNIT WITH HORIZONTAL DISCHARGE
N.T.S.
NOTE: DUCTWORK AND AUXILIARY SUPPORTS SHALL BE NEATLY PRIMED AND PAINTED BY CONTRACTOR, WITH AN ALKYD-BASED RUST INHIBITIVE APPROVED PAINT SYSTEM