

DISCOVER BALRANALD & Surrounds



VISITOR GUIDE



We acknowledge the traditional Custodians of lands and waters within our Shire and recognise their ongoing responsibility to care for Country and of teaching and learning.

We pay our respects to Elders past, present and emerging and extend our respects to all Aboriginal and Torres Strait Islander First Nations Peoples

Background artwork supplied by local Aboriginal Artist - Louise Murray

Front Cover Photo Credit: donaldyip

Balranald DISCOVERY CENTRE

To begin your Balranald and Surrounds discovery journey the MUST SEE & DO destination is the Balranald Discovery Centre. The Balranald Discovery Centre is a state-of-the-art tourist complex and is a rare gem to find in an outback town. The Centre has gained high accolades and has received numerous awards for its exceptional visitor facilities and services.

The Discovery Centre comprises the Visitor Information Centre and the Discovery Cafe. The precinct also includes an interactive playground, a skate park, historical buildings and a 24 hour RV stop, along with tapped water and warm showers for travellers!

PHONE 1800 444 043 or 03 5020 1599 **WEB** www.visitbalranald.com.au

OPEN DAILY Closed Christmas Day & Good Friday



WELCOME



ABOUT BALRANALD & SURROUNDS

Covering approximately 21,400 sq kilometres, Balranald Shire encompasses a diverse natural landscape which includes the world heritage listed Mungo National Park and the picturesque Yanga National Park.

Surrounded by the wonders of the Murrumbidgee, Murray, Lachlan, Wakool and Edward Rivers, the area offers all visitors the opportunity to relax and enjoy some of the most unique natural scenery in Australia. There is an abundance of great fishing, water sports and nature just waiting for you.

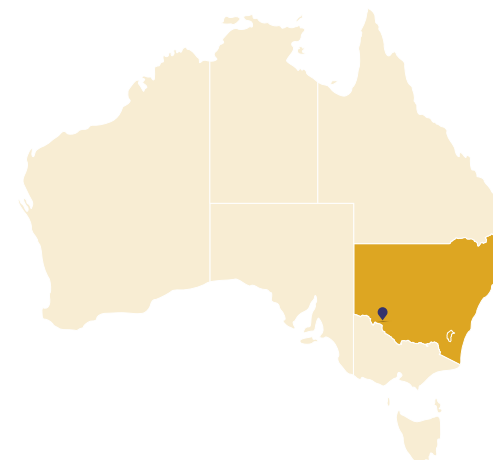
The area is surrounded by rich agricultural lands, the unique townships of Balranald and Euston and the hamlets of Kyalite, Oxley, Hatfield, Clare and Penarie (Homebush).

Balranald and Euston are two of the best RV Friendly towns in Australia. The communities offer ample FREE parking and dump point facilities in both locations including warm showers at the Balranald Discovery Centre.

GETTING TO BALRANALD AND SURROUNDS

Balranald is ideally situated for those travelling between major cities on the Sturt Highway and just a few hours' drive from the regional city of Mildura.

In true outback spirit, private pilots are welcome to land on the sealed airstrip at Balranald, there are tie down points and hanger space subject to availability. It is a popular strip for "fly-ins".

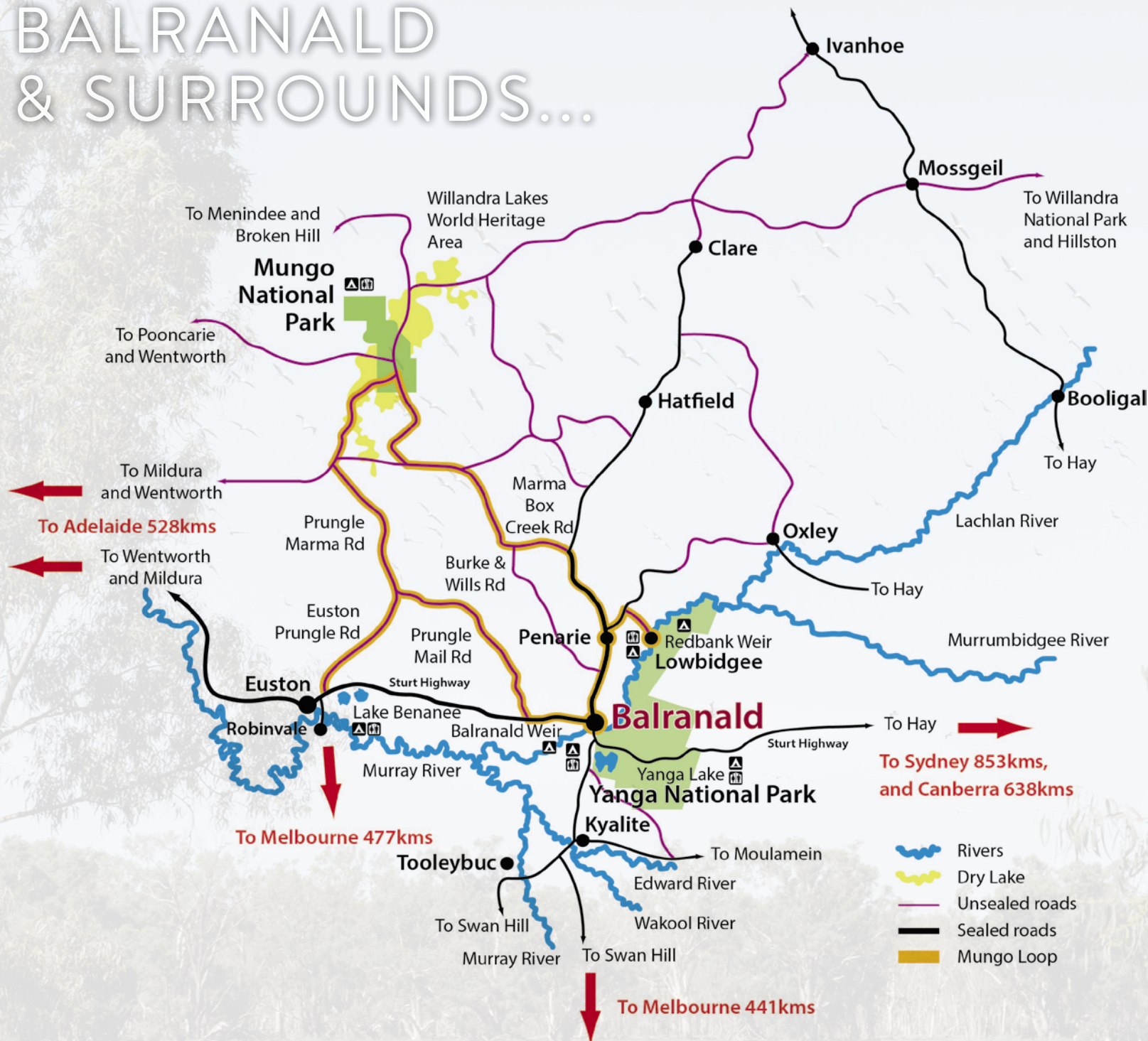


CONTENTS

WELCOME	1
BALRANALD SHIRE MAP	4
BALRANALD	6
SUGGESTED DAY TRIPS	12
BALRANALD TOWN MAP	14
THE GREAT MURRAY RIVER SALAMI FESTIVAL	16
BALRANALD 5 RIVERS OUTBACK FESTIVAL	17
EUSTON	18
OUR COMMUNITIES	20
YANGA NP	22
MUNGO NP	26
DRIVE THE MUNGO LOOP	28
THE 5 RIVERS FISHING TRAIL	34
TOURS	38
ACCOMMODATION	39
CAFES, RESTAURANTS & BARS	43
LOCAL STORES	46
BEAUTY & WELLBEING	48
SERVICES & AMENITIES	49



BALRANALD & SURROUNDS...



DISTANCES BY CAR FROM MAJOR CENTRES

Adelaide to Balranald via Euston	550km
Canberra to Balranald	638km
Hay to Balranald	132km
Melbourne to Balranald via Bendigo	482km
Mildura to Balranald via Euston	162km
Swan Hill to Balranald via Nyah	99km
Sydney to Balranald	853km

DISTANCES BY CAR IN & AROUND BALRANALD

Balranald to Clare	150km
Balranald to Euston	79km
Balranald to Hatfield	97km
Balranald to Penarie (Homebush)	27km
Balranald to Kyalite	37km
Balranald to Mungo National Park	156km
Balranald to Oxley	89km
Balranald to Yanga National Park	10km



BALRANALD



Balranald is full of surprises and the longer you stay, the more treasures you'll unearth.

SPECTACULAR LANDSCAPES AND WATERSCAPES IN THE OUTBACK

Balranald is the Shire's main township and is a geographer's living classroom. It is surrounded by unique landscapes and riverscapes which encompass five iconic rivers, the spectacular outback scape of world heritage listed Mungo National Park and the magical wetlands of Yanga National Park.

The area boasts spectacular bird life and fauna and heritage sites such as the Yanga Wool Shed and Yanga Homestead, which are both in close proximity to the town.

Gazetted as a town on the 4th April 1851, Balranald is considered the oldest settlement on the Lower Murrumbidgee. George James McDonald the Commissioner for Crown Lands named the town after the place he was from, Balranald, on the Isle of Uist in the Outer Hebrides of Scotland.



RICH IN HERITAGE AND CULTURE

Culturally, the Balranald area is rich in both Aboriginal and European history, it has a strong wool heritage and a deep connection with the River Red Gum which surrounds the region. You can learn more of the history and heritage of Balranald by visiting the Interpretive Pavilion at the Discovery Centre and walking the Heritage Trail featuring historic buildings and sites of significance.

You can take a tour from Balranald to world heritage Mungo National Park which has attracted world attention arising from archaeological sites containing human remains of at least 50,000 years.

Aboriginal culture is also in abundance at Yanga National Park which is located in close proximity to Balranald. It celebrates its indigenous heritage and sites, pastoral history and many natural wonders.

A WIDE RANGE OF SERVICES TO MEET EVERY VISITOR'S NEED AND BUDGET

With a thriving main street there is everything that a visitor would expect in a township of this size including gift shops, clothing stores, chemist, butcher, restaurants, a bakery, cafés, take-away shop, hardware stores, newsagency, post office, bank, ATM's and two grocery stores. There are also various accommodation options including a caravan park, motels, cabins and farm stay. Services including health services, well-being centre, hair & beauty and automotive services.

Balranald offers wonderful parks with playground equipment, a skatepark and picturesque picnic spots for those travelling with children, or the young at heart. A public swimming pool in the heart of town is the ideal spot to cool off in the warmer months.

WHAT'S THE CONNECTION WITH BALRANALD AND FROGS?

When you visit Balranald, you will see the FUNKY FROG SCULPTURES dotted around town, the Welcoming Frog at the Discovery Centre and the frog merchandise at the Visitor Information Centre and in certain shops in town.

So what is the connection?.....It's because of the endangered SOUTHERN BELL FROG also known as the Growling Grass Frog which lives in semi-permanent wetlands in south eastern Australia and is known to live in the wetlands of the Balranald Shire. It's a large handsome frog and is bright green in colour with splotches of gold, bronze and black along its back. Unfortunately it has disappeared from over 50% of its former range over the past 20 years. Disease, habitat loss, farm chemicals and exotic species may be likely causes.

Next time you visit BALRANALD stop by the Visitor Information Centre and the friendly staff will tell you all about the Southern Bell Frog and about the FUNKY FROG TRAIL to see all the frog sculptures around the town!



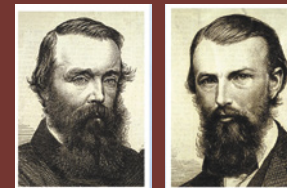
DID YOU KNOW?

- Ronald Ryan, the last man to hang in Australia, lived in Balranald and began his life of petty crime by robbing the local bank and being locked up in the Balranald Gaol. You can visit the gaol which is located at the Balranald Discovery Centre precinct
- Sir Charles Kingsford Smith landed the "Southern Cross" in Balranald and took people for joy flights as a fund raiser for his flying exhibitions. His landing place is marked with a white cross at the northern end of O'Connor Street West



Sir Charles Kingsford Smith

- Yanga Station is recorded as being the first private property to have a telephone installed - by no other than the nephew of Alexander Graham Bell. The telephone line was connected between the shearing shed, the men's living quarters and the homestead. You can visit the homestead today.
- Burke & Wills crossed the Murrumbidgee at Balranald in 1860 on their epic expedition. They also camped within the Balranald Shire and there is a road named after them and their exploration.
- Cobb & Co first arrived in Balranald in 1859 and Homebush Hotel in Penarie is the last remaining Cobb & Co stop still operating today.
- A resident of the Balranald Shire, Mr Townsend Duryea, was the official photographer of Prince Albert's visit to Australia in 1867.
- World heritage listed Mungo National Park is within the Balranald Shire
- Balranald Shire has the largest Pistachio Nut Farm in Australia at Kyalite



Burke & Wills

GETTING STARTED...

A perfect way to start your Balranald adventure is at the Balranald Discovery Centre. The Visitor Information Centre is located in the precinct as well as the Interpretive Pavilion, Discovery Cafe, playground, skate park, heritage buildings and the Men's Shed....

all great attractions to visit!

THE OLD GAOL (LOCK-UP)

Built around 1887, the Lock Up included a Police Station and House attached. The most infamous person held in the lock up was Ronald Ryan; the last man hanged in Australia in 1967. Ryan started his life of petty crime here in Balranald at the age of 16 years when he attempted to rob the local bank.

DISCOVERY SKATE PARK

The Discovery Skate Park is the latest, exciting addition to the Discovery Centre. It has been a real community and Council collaboration to bring it to fruition. Since its construction it has been a huge hit with both local and visiting youth and families.



DISCOVERY PLAYGROUND

The Discovery Playground boasts some state-of-the-art equipment including a number of interactive elements. The playground is also protected from the sun with shade sails covering the playground area. Ideal stop for children to play.

BALRANALD MEN'S SHED

The Balranald Men's Shed is located behind the Balranald Visitor Information at the Discovery Centre Precinct in Market Street.

The group is open to both men and women in the community. Drop in for a chat or join in some of the activities with the members, even learn how to use power tools and repurpose old or broken pieces of furniture in a safe friendly environment.

Also located on site is Jill, the resident artist. There are also plenty of gift ideas for the whole family.

Open from 9 am to 1 pm Tuesdays and Thursdays, or by appointment. Please contact Balranald Visitor Information Centre for more details.



THE WINTONG SCHOOL

Built in 1886 by John 'Wintong' Murphy. Originally it was used as the homestead on Wintong Station. John Murphy let men stay in the Building until their Sale of Land went through. It later became the schoolhouse for the children who lived on Wintong Station.

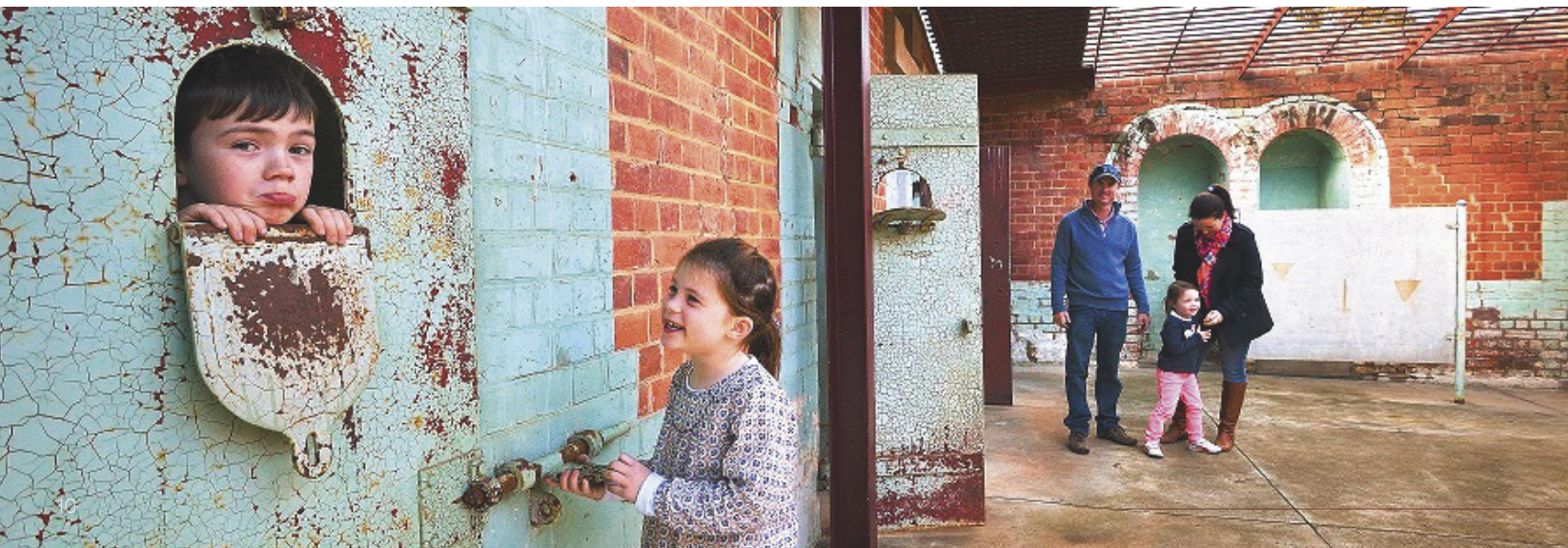
THE MALCOLM BUILDING MUSEUM

Located at the Balranald Discovery Centre precinct, the Malcolm Building Museum is a perfect place to step back in time and view the collection of historic photographs and local artefact's from the historic "Malcolm and Beatty Stock and Station Agency."



BALRANALD DISCOVERY CENTRE

LOCATION 83 Market Street, Balranald
OPENING TIMES 10.00am - 4.00pm Daily
PHONE 1800 444 043



AROUND TOWN...

THE MURRUMBIDGEE RIVER AT BALRANALD

Take to the majestic river and see Balranald's natural beauty from a different perspective. From the caravan park on Court St, take your kayak and life jacket and enjoy an easy hour-long paddle along the Murrumbidgee River. Make tracks for 'The Bend' at the end of We Street. This popular fishing spot is easily accessible on foot or, for a different perspective, launch a boat from the boat ramp near the bridge.

LOCATION Start Along Court Street in Balranald and at the "River Bend" at the end of We Street, Balranald. See the Visitor Information Centre for the best river spots around town! 83 Market Street, Balranald of Balranald.

PHONE 1800 444 043

Contact the Visitor Information Centre for more details

BALRANALD SOUTHERN CROSS INCORPORATED (PLANE REPLICA)

On Saturday 11th November 1933, Sir Charles Kingsford Smith landed in his famous Southern Cross plane in Balranald for a short visit. A replica of the Southern Cross plane which appeared in a documentary was acquired by the local community group Balranald Southern Cross Incorporated. The replica is stored in a large warehouse in Balranald for viewing along with other memorabilia, vintage cars and historical artifacts.

LOCATION 118 Market Street, Balranald
Gold Coin Entry

OPENING TIMES 10.00am - 2.00pm

PHONE Col Mobile: 0497 016108

Kathleen Mobile: 0407 304 922



THE HERITAGE TRAIL

From the Balranald Discovery Centre follow the town's Heritage Trail. This 1 ½ hour walking tour takes in several of Balranald's most significant historical buildings and points of interest. A series of plaques leads you on a fascinating journey through the town's history.

LOCATION Start at the Discovery Centre, 83 Market Street, Balranald and see the Visitor Information Centre staff for details of the trail

OPENING TIMES 10.00am - 4.00pm Daily

The plaques are on display 24/7

PHONE 1800 444 043

See the Visitor Information Centre for more details

THE FUNKY FROG TRAIL

The FUNKY FROG SCULPTURES dotted around town honour the endangered Southern Bell Frog that live in the wetlands within the Balranald Shire. Walk this fun trail!

LOCATION Start at the Discovery Centre 83 Market Street, Balranald and see the Visitor Information Centre staff for details of the trail

OPENING TIMES 10.00am - 4.00pm Daily

The sculptures are on display 24/7

PHONE 1800 444 043

See the Visitor Information Centre for more details



THE MILITARY COMMEMORATIVE TRAIL

The Military Commemorative Trail chronicles and honours the lives and diversity of contributions made by Balranald Shire residents during times of international conflict. (See plaques which are on River, Court and Market Streets.)

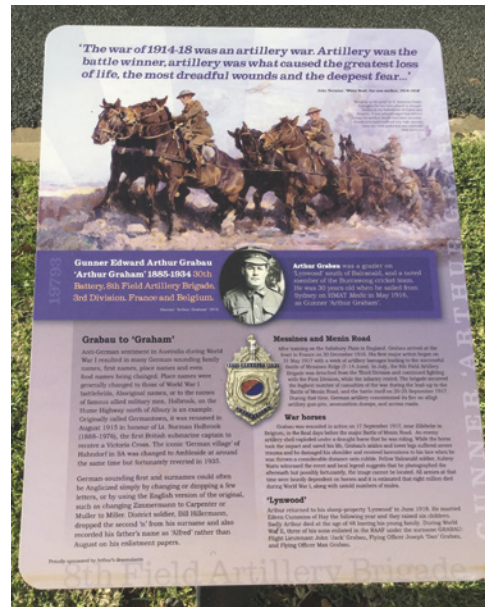
LOCATION Start at the Discovery Centre, 83 Market Street, Balranald and see the Visitor Information Centre staff for details of the trail

OPENING TIMES 10.00am - 4.00pm Daily

The plaques are on display 24/7

PHONE 1800 444 043

See the Visitor Information Centre for more details



THE SWING BRIDGE AND NATURE WALK

Located from Court Street, cross the swing bridge over the Murrumbidgee River and follow the 2.4km track along the river for the nature walk. Keep an eye out for Yellow Rosellas, kookaburras and the occasional echidna, not forgetting kangaroos and emus.

LOCATION Court Street, Balranald

PHONE 1800 444 043

Contact the Visitor Information Centre for more details

THE BALRANALD ART GALLERY

Visit the iconic Balranald Gallery which hosts regular local and travelling exhibitions. The Gallery also has some wonderful works from local and regional artists on display and a number of the artworks are available for purchase.

LOCATION 51 Mayall Street, Balranald

OPENING TIMES Check with the Gallery or Information Centre

PHONE 03 5020 0200



SUGGESTED DAY TRIPS



Looking to fill in a day in Balranald?

DAY 1

Why not head out to Yanga National Park and wander through the woolshed, then take an audio tour (available from the Visitor Centre) out to the Homestead. Wander through the Cooks Cottage exhibition and enjoy a walk along the lake foreshore.

Afterwards you could wander around the Discovery Centre which includes the Visitor Pavilion, Interpretive Centre, Old Gaol, Wintong School, Men's shed (Tuesdays & Thursdays) and the Malcolm Building Museum. And for kids check out the Skate Park and Awesome Playground.

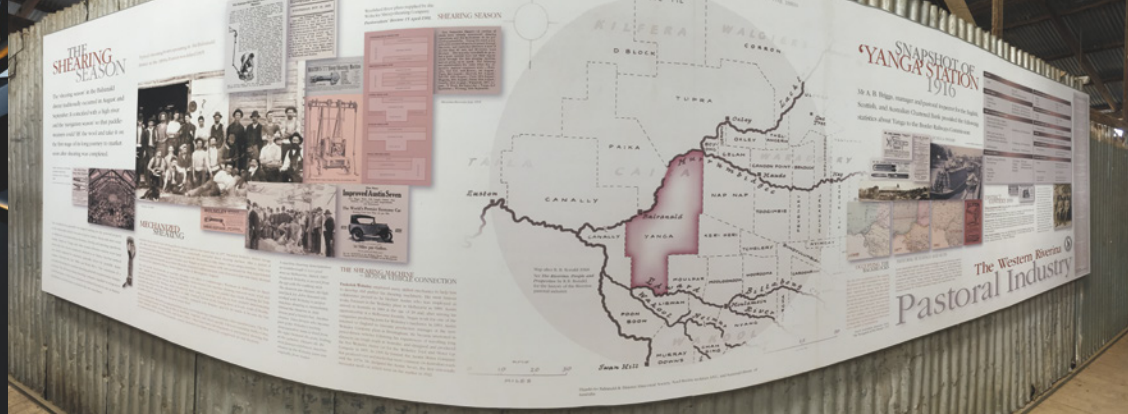
DAY 2

Take a walk over our swing bridge and enjoy a leisurely 2.4km stroll which takes you along the river and back over our entrance bridge into town. You can also wander through the Southern Cross Building and chat with the enthusiastic volunteers about the replicas of the Southern Cross and Lady Southern Cross planes that are on display there.

Then pop around to the Art Gallery which is located in Mayall Street and browse through the gift shop and the art collection on display. Maybe even make a purchase of a one of a kind Balranald masterpiece. Grab a map from the Visitor Centre and Follow the frog trail around finding our funky frog sculptures. Also check out the heritage



Photo Credit: Mike Bremers



walk and the Military trail plaques found throughout Balranald. Maybe finish the day off by fishing on the Murrumbidgee River which flows right through the heart of town.

DAY 3

Why not travel out to Mungo National Park (approx. 2hr drive from Balranald) and enjoy the beauty of the ancient landscape. Enjoy a 70km drive around the park with lots of points of interest to keep you busy. You can join a tour for the Walls of China from out at the Mungo Lodge or with the Aboriginal Guides at the park - tour times vary so contact us here at the Visitor Centre before you head out for up to date tour information. If you would rather not take your own vehicle contact the Balranald Visitor Centre.

DAY 4

Perhaps a drive over to Euston (45mins) and enjoy lunch at the Euston Club which is situated on the Murray River and then ask the friendly staff at the front desk (which is also a Visitor Centre) about the walks available and the other attractions such as the Courthouse, Weir & Lock 15. On the way back from Euston check out Lake Benanee a perfect place for fishing, swimming, kayaking etc (situated 15kms on the Balranald side of Euston)

DAY 5

Still looking for things to do - Why not head over to Kyalite and enjoy a spot of fishing on the Edward or Wakool River and call in to the Kyalite Hotel for a drink or meal.

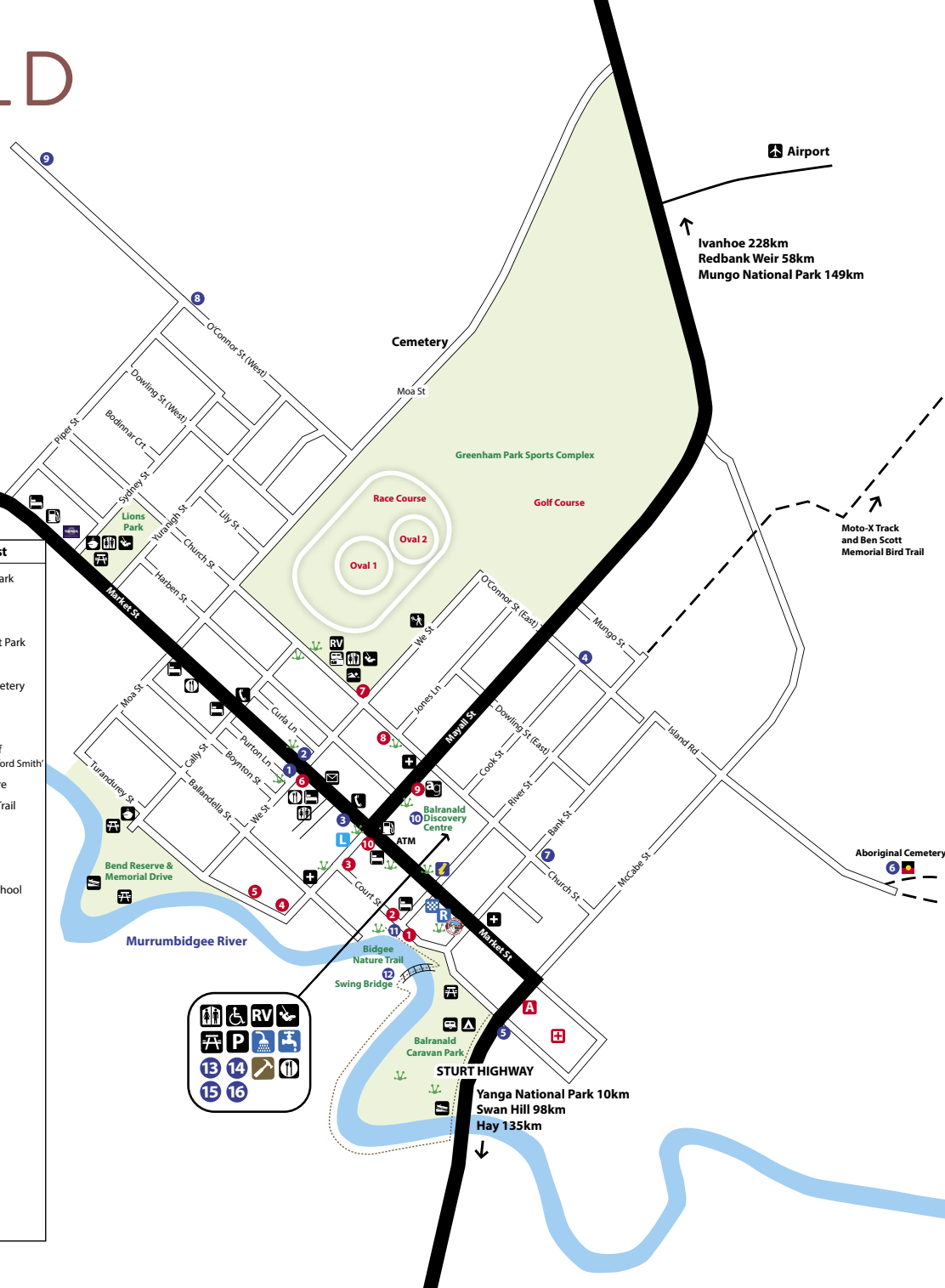
You can also check out the Homebush Hotel situated 27kms up the Ivanhoe Road. It has a fully stocked bar and offers lunch, tea and pizzas. It has been there since the 1800's and was once a Cobb & Co Coach stop and is still fully operational to this day - although the coaches are few and far between now.



BALRANALD TOWN MAP...

Lake Benanee 60km
Euston 80km
Mildura 156km
Adelaide 552km
Balranald low-level weir 6km

Legend	Heritage Walk Plaques	Places of Interest
Information	Balranald	1 Library / CWA Park
Frog Sculptures	1 Wharves	2 Fire Station
Picnic tables	2 Court Street	3 Senior Citizens
Barbeque	3 AJS Bank	4 O'Connor Street Park
Boat ramp	4 Sturts Crossing	5 Anzac Park
Toilets	5 Paddle Steamers	6 Aboriginal Cemetery
Police	6 General Store	7 Prickle Downs
Hospital	7 Central School	8 Pony Club
Ambulance	8 Catholic School	9 Landing Place of 'Sir Charles Kingsford Smith'
Phone	9 Masonic Hall/Gallery	10 Discovery Centre
Petrol Station	10 Lays Drapery Store	11 Bidgee Nature Trail
Art Gallery		12 Swing Bridge
Camping	Euston	13 Skate park
Caravan Park	12 PS Canally	14 Museum
Church		15 The Wintong School
Tennis		16 Military Trail
Caravan Waste		
RMS		
NRMA		
Walking Track		
Playground		
Parking		
Laundromat		
RV		
Shower		
Cafe		
Drinking Water		
The Mens Shed		
Ex - Services Club		



SPORTS & LEISURE FACILITIES

BALRANALD SWIMMING POOL
(not opened in winter months)
Church Street, Balranald | 03 5020 1357

BALRANALD GOLF COURSE
116 O'Connor Street, Balranald
0477 444 584

BALRANALD LAWN TENNIS COURTS
We Street, Balranald | 0487 201 575

BALRANALD LAWN BOWLS
Balranald Ex-Services Club
Market Street, Balranald | 03 5020 1205

BALRANALD SKATE PARK
Balranald Discovery Centre
83 Market Street, Balranald

BALRANALD SPORTING COMPLEX
(Football, Netball, Cricket, Racing)
Greenham Park - Church Street, Balranald

EUSTON LAWN BOWLS
(at Euston Club Resort)
Nixon Street, Euston | 03 5026 4244

ROBINVALE/EUSTON GOLF COURSE
4240 Murray Valley Highway, Robinvale
03 5026 3286

EUSTON RECREATION GROUND
Off Carey Street (Sturt Hwy), Euston





2nd Saturday in October

Euston Club Resort Riverfront

BEST SALAMI COMPETITION | FOOD STALLS | DRINK STALLS
MARKET STALLS | COOKING DEMONSTRATIONS
FUN FOR THE KIDS | LIVE ENTERTAINMENT

murrayriversalamifestival.com.au

LIKE OUR SOCIAL MEDIA PAGES
TO KEEP UP TO DATE.

Search "Murray River Salami Festival"



THE BALRANALD 5 RIVERS OUTBACK FESTIVAL

The Festival celebrates all that is wonderful about living in a rural and outback NSW community that is surrounded by five of the most iconic river systems in NSW, and for one, it is the longest river in Australia. These 5 Rivers are The Murray River, The Murrumbidgee River, The Lachlan River, The Wakool River and The Edward River.

First held in 2010, the Festival helps to increase Balranald's profile and image as a genuine and unique tourism destination and helps to stimulate the economy of Balranald and the surrounding communities.

Run by a committee of dedicated volunteers, events over the Festival weekend include Markets, Progressive Dinner, 4WD Muster, Music Festival, Art Exhibition and more.

The Festival is held in October every year, to view up to date details on the festival find us on Facebook or visit our website

www.5riversoutbackfestival.com.au



EUSTON



With a River Port history, Euston provides a slice of paradise.

Situated between Mildura and Swan Hill, Euston and Robinvale are nestled on opposite banks of the most user-friendly stretches of the Murray River.

The township of Euston grew on the site of the Boonahool Station, established by seventeen-year-old Edmund Morey in 1846 at what was then the western limit of European settlement. This station grew to one million acres by 1946, by which time it was known as Euston, after a mansion in Suffolk, England. From the 1850's the land was devoted to wool production and the town developed as a river port with a wharf, punt, courthouse, police station, hotel, a boiling-down works, wool-scouring plant and eucalyptus factory.

Euston was proclaimed a town in 1885 but virtually ceased to exist when the river trade declined. The building of a railway and road traffic bridge across the Murray River - joining Robinvale in Victoria and Euston in New South Wales - saved Euston from certain extinction. Today one of the main industries in Euston is tourism and this small Murray River town caters very well for visitors looking for a slice of riverside paradise.



The Murray river is the hub of recreation with water skiing, kayaking and house-boating activities. Of course the fishing is also great and there is easy access to the river by a sealed boat ramp. Euston also boasts a 4 STAR resort in the Euston Club. The club caters for all your needs including meals or a game of bowls. If camping by the river is more your style, then Euston has the spot for you. As an RV friendly town you are encouraged to pull up and enjoy the riverside views.

REGENT PARROT

Euston is an important location for the endangered Regent Parrot, which breeds in colonies in the area. It relies on large River Red Gums for nesting which occur along the Murray River. The parrots mostly feed in Mallee woodland on seeds, fruits and flowers. Feeding sites are often away from the river and the Regent Parrots can often be seen in flocks flying through and over Euston town. A good place to see them is near the Murray River itself in Euston.



THINGS TO SEE AND DO IN EUSTON

The Euston/Robinvale area boasts one of the widest stretches of the Murray River for many kilometres. Enjoy a variety of river activities such as fishing, water skiing and swimming or enjoy camping, bike riding and birdwatching.

THE EUSTON COURTHOUSE

The Euston Court House was built in 1883 and now serves as the home of the Euston Historical Society. The Society was established in 1981 and aims to preserve the written and photographic history of Euston and Robinvale. The Society meets on the third Tuesday of every month and visitors are most welcome.

LOCATION 41 Murray Terrace, Euston NSW

EUSTON LOCK AND WEIR 15

The Euston Lock & Weir 15 is a fascinating insight into an aspect of the Murray River. BBQ facilities, shelter, lawned area and an amenities block ensure that you can take your time to admire the view from the height of the hill. Wander down the hill to the river itself and find the post that marks the famous 1956 flood level. It is astounding to imagine that such a volume of water flowed at that spot 50 years ago.

LOCATION Weir Road off Pethard Road, Robinvale/Euston

EUSTON REGIONAL PARK

Nestled along the northern bank of the Murray River, the Euston Regional Park is the ideal spot to set up camp under a majestic river red gum. Whether you are an angler, an avid birdwatcher or simply plan to relax by the river with a good book, Euston Regional Park has much to offer. The towering trees of the river red gum forests provide welcome shade to visitors and a myriad of plant and animal life, help stabilise river banks and provide the perfect backdrop to sit by the river.

LOCATION Northern bank of the Murray River, Euston



LAKE BENANEE

With a white sandy foreshore, earth boat ramp and public toilets, Lake Benanee is one of Australia's most popular free camping spots. The Lake is part of the Euston Lakes wetland and floodplain system.

LOCATION 60km west of Balranald / 15km east of Euston on the Sturt Highway, NSW

EUSTON WALKING AND BIKE TRAIL

This leisurely and peaceful 2.5km walk links Robinvale and Euston on each side of the Murray River and provides an alternative view of Euston Weir and Lock 15.

LOCATION Access to bikes, prams and wheelchairs is available by parking under the bridge on the Euston side of the Murray River.

EUSTON AVIC

Located in the Euston Club Resort Reception

EMAIL reception@eustonclub.com.au

PHONE 03 5026 4244

ADDRESS Nixon Street, Euston NSW 2737



OUR COMMUNITIES



KYALITE

The ideal watering hole for fishermen.

The village of Wakool Crossing (the site of present-day Kyalite) was founded by Henry Talbot, who in about 1848, established a punt service across the Wakool River. When he became established, Talbot brought his family out from Ireland, including his parents and siblings. His brother John came to Wakool Crossing with his family and assisted Henry Talbot to construct an inn and a general store on land Henry had purchased near his punt. In September 1860 Burke and Wills dined at the hotel.

Kyalite is located on the junction of the Wakool & Edward Rivers and the Kyalite Pub is the centre of activity in a village that for years has been an important and popular watering hole for visiting fishermen who camp on the banks of the Wakool or Edward Rivers.

THINGS TO SEE AND DO IN KYALITE

Explore the nearby Kyalite Regional Park to the east, with its abundant wildlife and wonderful camping spots.

Lure in a majestic Murray Cod or catch some yabbies for the BBQ or join the local fishing club and be part of their monthly fishing competitions.

Swim, boat, canoe, kayak on 3 rivers in one day without leaving Kyalite!

Join in the fun on the long weekend in March every year when, regardless of conditions, the Kyalite Pub releases assorted native fingerlings into the Edward and Wakool Rivers.

Enjoy Australia's Biggest Burger at the Kyalite Pub or take the Publicans' challenge of a supra-sized sizzling rump steak!

THE KYALITE PUB/CARAVAN PARK/ GENERAL STORE

Joel and Jodie are the proud new owners of the Kyalite Pub, Caravan Park and General Store. They have BIG plans to bring it back to life. Relax with an ice cold drink while you admire the Pub walls. You will find a full photo history of the Pub, complemented with hunting weapons and tools of trade used by our original Bushmen. The Pub is also renowned for its delicious meals! Within the Hotel bounds is a quiet friendly caravan park that allows you to enjoy your holiday to the fullest. The park is only a few minutes walk to the boat ramp on the Wakool River. The Pub also has a fully stocked general store.

LOCATION Kyalite Road, Kyalite NSW
PHONE 03 5038 2221



PENARIE / HOMEBUSH HOTEL

One of the true 'back country pubs' which has stood the test of time and still remains the 'hub' of the vast Western Lands Division of NSW between Balranald and Ivanhoe. The famous bar, with its huge central open fireplace, character filled "shearing board" mural and many local artefacts displayed around the walls has been home to many a trapper, teamster, drover, shearer, truckie, mailman, traveller and station family and staff over the past 135 years. Good pub meals and accommodation are also available.

LOCATION Ivanhoe Balranald Road, Penarie NSW
PHONE 03 5020 6803



CLARE

Located between Balranald and Ivanhoe, Clare is a small community centred around the Clare Public School which is at the heart of the community. The school was established in 1985 and services the nearby farming communities.

LOCATION Ivanhoe Balranald Road, Clare NSW



HATFIELD

You can still experience the great outback salt plains, red sandy ridges with breathtaking sunsets and star filled skies. The Hatfield Recreation Hall is often the place for a community get together and fundraiser. Each year, the Balranald Isolated Children's Parents Association stage an event called the "Hatfield Happening" in the Hatfield Recreation Hall, it is a High Tea event for the ladies (men are welcomed). Funds raised go towards a particular charity or cause. You can see the old pub which is now abandoned on the Ivanhoe Road.

LOCATION Ivanhoe Balranald Road, Hatfield NSW



OXLEY

The Oxley Road from Penarie provides an alternative scenic route to Hay. The village of Oxley is located near the junction of the Lachlan and Murrumbidgee rivers and on the edge of the Great Cumbungi Swamp. The township was developed in the mid-1860s and was named after the noted Australian explorer, John Oxley. At Oxley you will find a quaint little church and graveyard. The church has services every two months and is often the scene of a real "bush christening".

LOCATION Oxley Road, Oxley NSW

YANGA NATIONAL PARK



One of New South Wales newest National Parks with a long and significant history

Yanga National Park may be one of the states newest parks, but this land boasts a long and significant history and Aboriginal families have lived here for a millennia. From the early explorers, to shearers and rabbit trappers, fishermen and campers - people have flocked to this area for all sorts of reasons. Now its your turn to camp by the banks of the Murrumbidgee like Burke and Wills once did.

Drop in to the park office, located in the homestead precinct, to pick up information and learn about self-guided tours. Park staff are always happy to answer your questions and offer expert advice on camping or bushwalking in the area. If the park office is unattended you can also find plenty of visitor information at Balranald Discovery Centre. The Cooks Cottage exhibition is open daily and you can wander around the grounds of the homestead.

THE YANGA HOMESTEAD

Step in to the past and explore the history of Yanga National Park's pastoral and Aboriginal heritage. Bring a picnic to enjoy while looking out to the lake.

Explore the wonderful Yanga Homestead and return to a time when Yanga was one of the Riverina's most productive pastoral stations. The homestead was built around 1870, along with station outbuildings including stables, gardeners shed and station store. There are also rose gardens, restored and maintained by volunteers.

While you're here, marvel at the homesteads unique Murray pine 'drop log' design.

To see inside Yanga Homestead you will need to pick up an audio guide from either Yanga National Park Office or Balranald Visitor Information Centre.

After you've explored the homestead, take the opportunity to explore the surrounding area along Yanga Lake walking track. As you walk, you'll pass Yanga Lake viewing deck - a great place to see evidence of the lake's Aboriginal heritage and birdlife.

GETTING THERE AND PARKING

Yanga Homestead is in the Homestead precinct of Yanga National Park. To get there:

- From Balranald, travel east along Sturt Highway for 7km
- Turn right into Yanga rest area just over Yanga Creek
- Turn left at the Yanga National Park sign and drive 2km along unsealed road to Yanga Homestead



Whilst the road into the Homestead is unsealed, it is accessible to a 2WD vehicle, however the road is a Dry Weather road only.

Parking is available at Yanga Homestead for all vehicles.

YANGA LAKE RED GUM BIRD HIDE

Located within the Homestead precinct, all the family will enjoy spectacular birdwatching and scenic views at Yanga Lake Red Gum bird hide in Yanga National Park near Balranald. Attracting over 150 species of birds, Yanga Lake Red Gum bird hide offers some of the most spectacular birdwatching in NSW. Accessed along Yanga Lake walking track, it's a great destination for families and nature-lovers alike. Located near Balranald, Yanga National Park, is the perfect spot to have a picnic, unwind and get away from it all.

Nestled amongst the river red gums and old man saltbush, the hide is a great spot to watch the pelicans and black swans as they forage for food and bring up their young in these majestic waterways. Spring and autumn are great times for birdwatching as the lakes fill with birds such as white-bellied sea eagles and great crested grebes.

YANGA LAKE VIEWING DECK

Yanga Lake viewing deck offers spectacular birdwatching and scenic wetland views in Yanga National Park, near Balranald.

For tranquil lakeside views and spectacular birdwatching, Yanga lake viewing deck is an ideal stopover while exploring Yanga National Park. A great spot for a family picnic, prepare to be enthralled by a magnificent array of migratory and wetland birds.

From this elevated scenic lookout, you'll be enthralled by sweeping 270 degree views of the immense 1,200 wetlands. Look for Pelican Point to the south and Regatta Beach to the west. Keep an ear out for the rumbling call of the endangered Southern Bell Frog.

This park protects vital feeding and breeding grounds for over 150 species of migratory and water birds. For birdwatching, take advantage of the pedestal binoculars for close up views of spoonbills, herons and glossy ibis.

If you're keen to stretch your legs, try Yanga Lake walking track. Yanga Lake viewing deck is in the Homestead precinct of Yanga National Park.

YANGA LAKE WALKING TRACK (GRADE 5 WALKING TRAIL)

For a beautiful lakeside walk that combines impressive scenic views and superb birdwatching, head for Yanga Lake walking track. This short track traces part of the eastern shoreline to link some of the most scenic features of Yanga National Park. Near Yanga Homestead, it's an ideal introduction to the tranquil beauty of the wetlands for families, school groups and nature lovers.

The Yanga Lake walking track is a family friendly lakeside walk offering scenic wetlands views and spectacular birdwatching in Yanga National Park.

The steep and rough track descends from Yanga Lake viewing deck through majestic River Red Gums and River Coobas to the very shores of the immense lake. Enjoy a leisurely picnic as you soak up the natural beauty and serenity.

Spring and autumn are excellent times to visit as bird activity is at its peak. However, there's birdlife all year round including pelicans, cormorants and white-bellied sea eagles. For a more immersive birdwatching experience stop by Yanga Lake Red Gum bird hide.

Yanga Lake walking track is in the Homestead precinct of Yanga National Park.

YANGA WOOLSHED

Located alongside the Murrumbidgee River, Yanga Woodshed was built in the late 1800's. Once the largest, most modern woolshed in the district, it housed 3,000 sheep and provided work for up to 40 shearers at a time.

Today, the woolshed is in Yanga National Park, and you can wander through it on a self-guided tour, exploring its runs and pens, getting a feel for an authentic 19th century woolshed and a taste of Australian history. You'll also find an interpretive display to fill you in on the history of the area - once Yanga Sheep Station. Close your eyes and breathe in the smells of the past, imagining the sounds of docked paddle boats outside, waiting to transport their wool cargo down the river highway.

Don't forget to check out the viewing platform for great river views; it was once where the old wharf stood. Pack lunch and visit the nearby Yanga Woolshed picnic area or stay overnight at Mamanga campground.

Yanga Woolshed is also available for weddings and private functions.

GETTING THERE AND PARKING:

- From Balranald, travel east along Sturt Highway for 2km
- Turn right onto Windomal Road
- Continue for approximately 3km before turning right at the sign to Yanga Woolshed

Windomal Road is sealed to the Yanga Woodshed turnoff, however the driveway in is unsealed. It is accessible to 2WD, however is a dry weather road only. Parking is available off Windomal Road, a short walk from Yanga Woolshed.

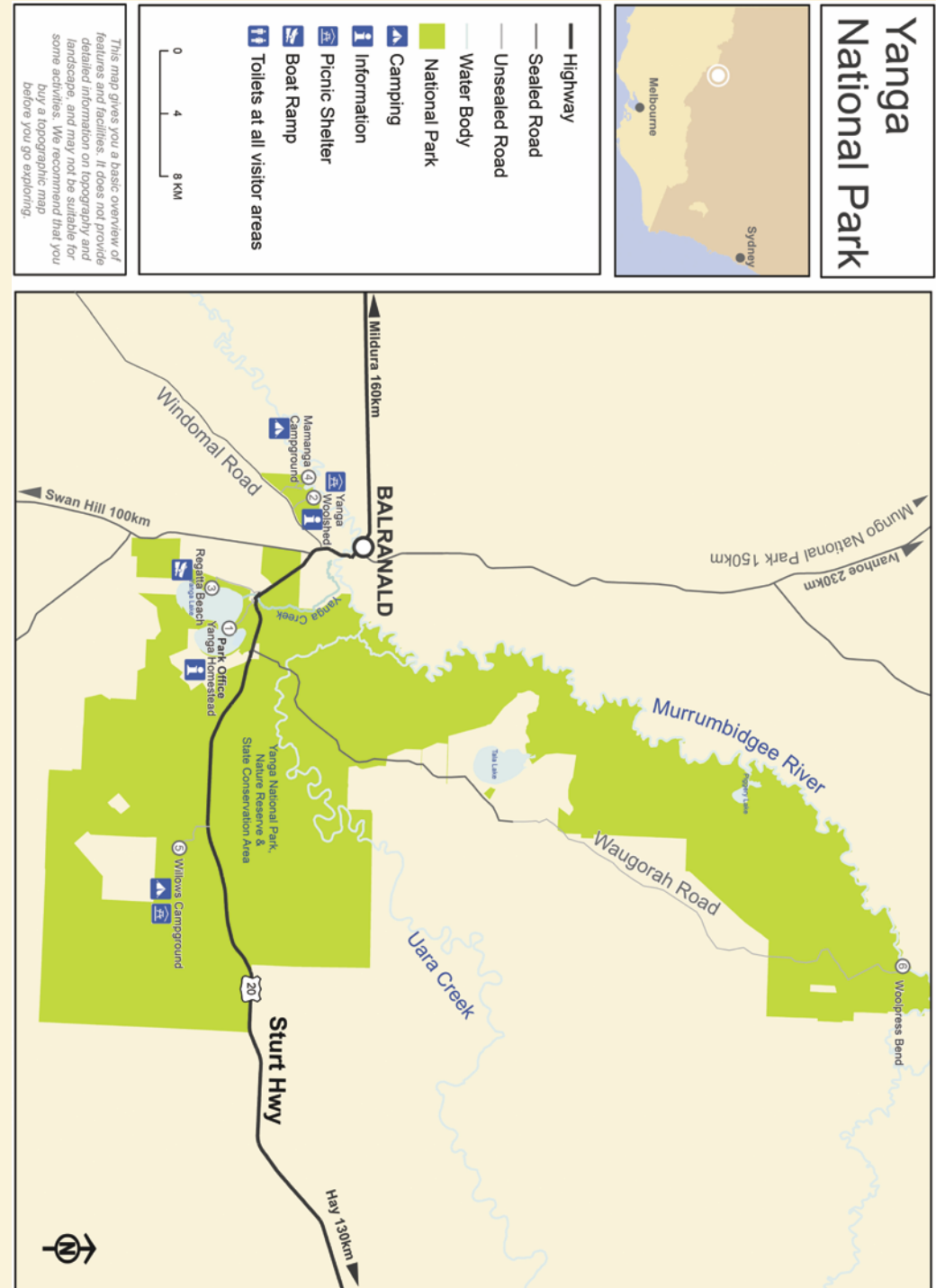


CAMPING IN YANGA NATIONAL PARK

Yanga National Park has three options for would-be campers. If it's convenient riverside camping you're after Mamanga Campground is perfect. Close to Balranald and nestled amongst majestic River Red Gums, with 13 sites suitable for tents, camping trailers or caravans right on the banks of the Murrumbidgee River, you are sure to find your own patch of tranquillity.

For something a bit different try The Willows Campground and Picnic Area. Located 25km east of Balranald and 15km past the Homestead turnoff on the Sturt Hwy, the Willows has 11 open sites set among Belah and Rosewood woodlands. If you are really lucky you might even see the beautiful Pink Cockatoo's as they find somewhere to roost for the night.

If it is true remoteness you are after, Woolpress Bend is the spot. Located 65km north east of Balranald Woolpress Bend is right in the heartland of the Lowbidgee wetlands. Each site is right on the river, choose one of three secluded and very remote camping spots but be sure to book at the park office first. All camping of Yanga is free of charge and Woolpress is the only one you need to book due to it's remote location.



MUNGO NATIONAL PARK



Photo Credit: John Carnemolla

Dramatic and spectacular landscape; home to Mungo Man and Mungo Lady

World Heritage listed Mungo National Park is home of the famous Mungo Lady and Mungo Man the world's oldest human cremations. These fascinating 42,000 year old ritual burials, along with past human footprints, tell an incredible story about the long history of Australian Aboriginal people and led to the establishment of Willandra Lakes World Heritage area and Mungo National Park. The spectacular landscape is almost always described as "lunar" and is tinged with the classic ochre hues of inland Australia. The most dramatic formation is the Walls of China, which run along what was the eastern shoreline of the largest lake.

THINGS TO SEE AND DO AT MUNGO NATIONAL PARK

Journey through the spectacular outback landscapes of the Walls of China with a licensed NPWS Discovery Ranger or one of the licensed Tour Operators.

Drive the Mungo self-guided drive tour through Mungo National Park which offers scenic desert views of the Walls of China. Enjoy lunch and some birdwatching at the Rosewood picnic spot and Mallee stop walking track.

Visit the Mungo Woolshed or enjoy the iconic views from wheelchair-accessible Walls of China viewing platform. These views are some of the best at Mungo National Park. Cycle or car tour the historic Zanci Pastoral loop which offers superb wildlife and birdwatching.

Take in the magnificent views from the Mungo lookout which offer scenic desert views across to the famous Walls of China formation.

Visit the Mungo Visitor Centre which has excellent displays and tourist information.



Artwork - 'Mungo - Meeting Place'
Artist - Craig Charles (Deceased)

THE WALLS OF CHINA

After the lake dried up, winds swept storms of sand up from the lake floor, dumping it on the shoreline and creating the famous Mungo lunette. This is the site of the spectacular Walls of China carved from layers of the lunette. You need a licensed guide to walk the Walls of China.

THE MUNGO WOOLSHED

Adjacent to Mungo Visitor Centre, the heritage Mungo woolshed, built in 1869, harks back to the pastoral history of this dramatic yet fragile landscape. Step inside the shady cool and marvel at the ingenious drop-log construction, built from local cypress pine logs by Chinese labourers.

REDTOP LOOKOUT & BOARDWALK

Red Top lookout and boardwalk is an unbeatable vantage point, offering bird's eye views of the park's remarkable deep ravines, rippling patterns and rich textures. This short walk along a boardwalk takes in the views to the north along the Mungo lunette and to the west across the bed of Lake Mungo.

ZANCI HOMESTEAD

The Zanci Homestead site comprises of a range of buildings, some of which are still proudly in their original condition and some of which are now only ruins. Built from iron and flattened kerosene tins, the original homestead had two rooms and a small kitchen, where cooking was carried out over an open fire.

MUNGO SELF-GUIDED DRIVE TOUR

The Mungo self-guided drive tour is a brilliant introduction to the awe-inspiring desert landscape and a chance to experience the historic significance of Mungo National Park in comfort. Crossing the ancient lake-bed to the Walls of China, the route takes in the iconic dunes and mallee country of outback NSW.

MUNGO LOOKOUT

At Mungo lookout you can gaze across the ice age lake bed that has uncovered bones of the original megafauna. Gaze across at the iconic 'Walls of China' formation, sculpted over thousands of years, by wind and rain. It's an awesome vision at any time of day, especially dusk.

FOR DISCOVERY TOUR BOOKINGS,
PARK INFORMATION INCLUDING
CLOSURES VISIT NPWS VISITOR
WEBSITE

www.nationalparks.nsw.gov.au

MUNGO NP OPENING TIMES

24/7 weather permitting
CHECK WEBSITE

NPWS LOWER DARLING AREA OFFICE
PHONES: 03 5021 8900



DRIVE THE MUNGO LOOP



IMPORTANT: The Mungo Loop round trip is approximately 380 kilometres with no fuel available en-route or at Mungo National Park. Mobile phone reception is also unavailable along much of the route. The Mungo Loop traverses private property; hence the numbered locations provided in this brochure are located on private land and are to be viewed from the road only. The many stock grids across roads are located in places that mark property or paddock boundaries. Please be alert for stock and native wildlife on the road and respect that they have right of way.

EXERCISE EXTREME CAUTION WHILE DRIVING ON VARYING ROAD SURFACES.

START

Your Mungo Loop journey commences in Balranald at the intersection of the Sturt Highway (Market St) and Ivanhoe Road (Mayall St). Head north on Ivanhoe Road.

Overview of the Balranald - Homebush - Mungo Area

This region is part of the semi-arid rangelands of western New South Wales (NSW). Rangelands are areas of native vegetation that are primarily used for grazing (wool, lamb and cattle production). The rangelands of western NSW have over 90% native vegetation cover and also support a diverse range of native wildlife. The region encompasses several different land types including saltbush plains, mallee communities and grasslands, mixed woodland communities and the southern Riverina woodlands of the Murrumbidgee River and its associated floodplains and smaller creek systems. Other agricultural enterprises in the area include dryland and irrigated cereal crops and viticulture, cotton and horticulture.

Numbered Mungo Loop signs en-route correlate to the information below:

1. The Balranald vineyard covers approximately 500 hectares on both sides of the Ivanhoe Road. It was established in the 1980's on the site of the old Balranald racecourse. Nearby, Cimino Bros produce quality seedless grapes and rockmelons for export. Both properties use efficient drip irrigation systems with water from the Murrumbidgee River.
2. For the next 25kms mallee vegetation stretches across the slightly undulating sand plains of the region. This mallee community type is known as chenopod mallee as the understorey is predominantly saltbush.

Mallee vegetation is characterised by multi-stemmed mallee eucalypts with underground lignotubers that re-shoot after fire. Common mallee trees include Congoo Mallee (*Eucalyptus dumosa*), Red Mallee (*Eucalyptus oleosa*), Ridge-fruited Mallee (*Eucalyptus incrassata*), Pointed Mallee (*Eucalyptus socialis*) and Yorrell (*Eucalyptus gracilis*). Different types of Mallee communities have different suites of understorey plants which may include Chenopods (Saltbushes), Porcupine Grass (*Triodia irritans*) and a diversity of other shrubs, herbs and grasses.

Throughout the region, mallee vegetation exists as a mosaic with mixed woodland communities. Species such as Sugarwood (*Myoporum platycarpum*), Cattlebush (*Alectryon oleifolius*), Buloke (*Allocasuarina luehmannii*) and White Cypress Pine (*Callitris glaucophylla*) predominate.

3. The area was once referred to as "The White Plain" due to the white soil that contains the naturally occurring mineral gypsum. Gypsum is used in many facets of agriculture and industry.
4. Burke & Wills Road is named after the explorers who travelled through the area in 1860. Stations Paika, Hughdale, Dundomallee, Tin Tin, Karra, Nanda, Upson Downs and The Oaks are situated along this stretch of road.
5. Paika Station is one of the earliest pastoral runs in the district. George Hobler was the first squatter to move into the 'unsettled' area west of the Murrumbidgee River and in 1846 established the station that was originally called Pakee (later to become Paika) an aboriginal word meaning 'wake up dreamtime'.





Written of Paika in 1872 (A Tour of the South, Town & Country Journal, 21 September 1872): 'This is one of the prettiest stations on route. The homestead is almost on a peninsula, for a fine broad lake with a green shelving shore, is on three sides. A thickly wooded island is in the centre; this lake abounds with wild fowl of every description'.

6. Paika Creek is part of the Lower Murrumbidgee floodplain, known by the locals as the 'Lowbidgee'. The Paika Creek Hotel once stood at Paika Creek. It was erected in 1873 and de-licensed in 1891. According to some sources there was a wine saloon on the opposite side of Paika Creek so that when the creek was running, traffic on either side of the creek could satisfy a thirst.

The 'Lowbidgee' is the largest area of wetland on the Murrumbidgee River and one of the most significant wetlands in the Murray Darling Basin. It includes the second largest River Red Gum (*Eucalyptus camaldulensis*) forest in Australia. More than 60 species of waterbirds have been recorded in this area. This area which also encompasses the Great Cumbungi Swamp.

7. In the locality of Penarie is the Homebush Hotel, established in 1878. It is the last operating hotel of the 17 hotels and wine shanties that once dotted the road from Balranald to Ivanhoe. The hotel was originally a Cobb & Co staging post and has been 'home' to many famous Australians. The publican will happily share a yarn about the colourful history of the pub!

8. Penarie Stock Watering Point - Throughout the area there is a system of ground watering tanks (dams) and travelling stock routes dating back to the 1870's to allow for the movement of stock to other areas and markets.

Rabbits were the source of income for around 20 families based around Homebush in the late 1950's and 60's. It was not unusual to water-trap hundreds of rabbits per night in the early 60's. 10,000 or more pairs of rabbits were sold to Homebush/Penarie each week in the 'good' years. The impact of this number of rabbits equates to feeding approximately 2,000 sheep per week!

In the late 1980's and early 1990's, 1080 poison was used to control rabbits. Historical data indicates that 10 tons of poisoned carrots was not an unusual amount to be distributed in the area. With the combined effects of myxomatosis, rabbit calicivirus and the concerted efforts of local landholders, rabbit numbers have decreased to approximately 5-10% of their original number.

The rabbit problem was the catalyst for the formation of the Homebush Landcare Group Inc in 1990. The group has been successful in securing government incentives to undertake an ongoing rabbit warren destruction program since 1991. The removal of at least 95% of the rabbit population has been a major achievement for the group. This in turn has resulted in the regeneration of plant species, a range of native wildlife and a significant improvement in ground cover.

9. The Black Box (*Eucalyptus largiflorens*) and River Red Gum (*Eucalyptus camaldulensis*) trees that can be seen here surround the dry lakebed and the intermittent watercourses.

The clay pans (large distinctive areas of bare ground) on the western side of the road are a natural landscape feature but due to poor management practices over a century ago as well as the impact of large rabbit numbers, these have increased in size.

Clay pans create water run off into swamps and water catchments. In the late 1880's and early 1890's livestock numbers were more than double the number of stock carried today. However, regeneration and rabbit control have been undertaken over the past 80 years to gradually re-establish the natural vegetation in these areas.

This work continues.

Chenopod shrublands are naturally treeless vegetation communities characterised by perennial saltbushes (chenopods - pronounced 'keen-o-pods' - from the family Chenopodiaceae), herbs and grasses. Common species of chenopods found in these communities include Black Bluebush (*Maireana pyramidata*), Pearl Blue Bush (*Maireana sedifolia*), Old Man Saltbush (*Atriplex nummularia*), Bladder Saltbush (*Atriplex vesicaria*), Pop Saltbush (*Striplex spongiosa*), Thorny Saltbush (*Rhagodia spinescens*) and Copperburrs (*Sclerolaena* spp.).

10. The landscape in this area is characterised by naturally treeless chenopod shrubland. A rotational grazing system has significantly improved the condition of the vegetation of this property. Rotational grazing involves a strategic system of moving sheep from one paddock to the next so that only one paddock is grazed at a time. This allows each paddock to be rested for the greater part of the year. By allowing adequate periods of rest, plants have time to recover and set new seed and new plants are able to germinate and become established. This promotes increased plant diversity, improved ground cover and reduced soil erosion. Water is supplied to this property via a pipeline pumped from the Murrumbidgee River. The Caira Stock Water Supply scheme (stock and domestic) delivers water to six other northern properties in the area.

The pipeline is 140km in length with many associated watering points. All seven properties have also undertaken rabbit control.

11. Box Creek commences at the Lachlan River to the East and joins the Murrumbidgee River west of Balranald. This creek flowed briefly in 2010 after heavy rainfall during a summer storm, however it last ran during the 1956 floods.

12. At the signpost to Willandra Lakes World Heritage Area and Mungo National Park, turn left and travel west on the Marra Box Creek Road. During spring, Round-leaf Pigface (*Disphyma clabellatum*) and Common White Sunray (*Rhodanthe floribunda*), paper daisies, are often prominent in this area.

13. Weeping Pittosporums or Native Apricot (*Pittosporum phyllireoides*) are hardy drought-tolerant trees that are found scattered through a variety of plant communities. Inside the bright orange, egg-shaped fruit are red seeds in a sticky pulp. Historically, the seeds were pounded into flour by the aboriginal people for use as a food, while an infusion of the leaves, seeds or wood was used in the relief of internal pains and cramp. (Source: Plants of Western NSW by GM Cunningham et al, 1992)

DO NOT EAT ANY PART OF THIS PLANT.

14. The dead Yarran (*Acacia Homalophylla*) trees that are visible have been subjected to complete defoliation over several years by caterpillars of the native bag-shelter moth. The severity of defoliation varies from year to year, as does the trees' reaction. Those stripped of their leaves take a considerable time to recover and in some instances the tree may die. These trees now provide shelter and refuge to many reptiles, insects and birds.





The Yarran develops into an attractively shaped bush-topped tree somewhat similar to the Myall (*A. pendula*) tree but with much darker bark and greener and less pendulous foliage. Seedlings are relatively abundant. (Source: Plants of Western New South Wales by GM Cunningham et al, 1992)

15. At the junction with the Burke & Wills Road (an alternative route south of Balranald), you can see visible healing of clay pans. Regeneration work undertaken and controlling the rabbit population has allowed the clay pans to grass over. Satiny Bluebush (*Maireana georgei*) is one of many species that can be seen here. The vegetation is strategically grazed in response to the stages of growth and seeding.

16. Bidura Station is 24,550 hectares. In excess of 7,000 rabbit warrens have been eradicated on Bidura Station. As a result, regeneration of native grasses, trees and chenopod species has increased and the density of ground cover has improved despite the dry seasonal conditions.

The Burke & Wills expedition camped at Bidura on 20th September 1860. Dr Beckler (expedition doctor and botanical collector) branded the mallee country "wild wasteland... oppressive to the highest degree and hell on earth for the wagon drivers".

17. The cleared areas along the road are strategic fire breaks that are part of the Bidura/Turlee Southern Mallee Bushfire Scheme Fire Trial.

Deep underground lies the Iona Fault. It is a limestone ledge which prevents the old saline sea water from entering the fresher aquifers to the east. This fault is defined as the commencement of the Mallee country.

18. You are now in a different type of Mallee community that is characterised by sand dunes and Porcupine Grass (*Triodia irritans*). Birds that may be seen here include Pink Cockatoos, Mallee Ringnecks, Wedge Tail Eagles, Galahs, Crested Pigeons and Red-rumped Parrots.

LEAVING THE HOMEBUSH LANDCARE AREA

19. You are now entering the 16,187 hectare Wampo Conservation Reserve, which has been fenced off and de-stocked of all sheep and cattle. All man-made water points have been made obsolete and control of noxious weeds and feral animals are the responsibility of the landholder.

20. Leaving the Wampo Conservation Reserve.

21. The Willandra Lakes World Heritage Area (WLWHA) commences here on the northern side of the road. The traditional owners of the land are the Mutthi Mutthi, Paakantyi and Ngyiampaa people.

22. Turlee Station is a working merino sheep and wheat cropping enterprise, which has also diversified into tourism, offering camping and self-contained accommodation. It has a total area of 58,600 hectares, of which 15,000 hectares is classified under the WLWHA.

Since 1982 a stock and domestic pipeline has been used to provide a more efficient and reliable watering system. The pipeline is over 147km long and is pumped from Lake Benanee on the Murray River. This has enabled sheep to be grazed in smaller flocks and watered on one of the 55 troughs and 21 ground tanks, significantly reducing grazing pressure on the landscape. An extensive rabbit control programme in the WLWHA has led to significant improvement in native vegetation. Turlee also has a 3205 hectare conservation reserve to preserve and regenerate chenopod mallee vegetation which supports a population of Malleefowl (*Leipoa ocellata*), an endangered species in NSW.

23. Turn right, at Turlee Leaghur Road following the signs to Mungo National Park.

24. This is the highest clay lunette on the edge of Lake Mungo. You will shortly enter Mungo National Park.

25. Mungo Lodge.

26. This is the junction of the roads to Mungo, Hatfield, Balranald/Euston and Buronga/Mildura. Please take the time to study the signposts as this intersection can cause some confusion! To continue your Mungo Loop Journey, turn left here onto the Prungle Marmara Road.

27. The Prungle Lakes have been dry for the last 15,000 years and are also part of the Willandra Lakes World Heritage Area.

28. This is the intersection of the Prungle Mail Road and Euston Prungle Road. At this intersection either turn left into the Prungle Mail Road to return to Balranald, or continue straight ahead to the Sturt Highway. Euston is located on the Murray River.

RE-ENTERING THE HOMEBUSH LANDCARE AREA.

BENANEE CLOSER SETTLEMENT SCHEME

In the 1920's a government sponsored attempt was made to open up the extensive Mallee country as a closer settlement scheme. This was based on dry land farming in similar country and climate to the Mallee country of Victoria and South Australia.

The commissioners of the then Western Lands Board saw agricultural settlement, with the help of railways and a channelled water supply from the Murray River, as a means of developing the Mallee country and bring in revenue to the NSW Government.

With adverse climatic conditions and low commodity prices during the worldwide financial depression, only fourteen families chose to remain after the 1940's. Some of the surviving families are reaching their fourth generation of managing their properties in a sustainable manner. (Source: Out of the West: A historical perspective of the Western Division of New South Wales by D Condon, 2002).

29. On both sides of the road is chenopod mallee vegetation where there have been sightings of Mallee fowl and active nests. An extensive fox-baiting program is implemented at strategic times of the year to aid in the preservation of the Mallee fowl.

30. Bramah Station is an 18,410 hectare property that was originally part of the subdivision of Canally Station. When first settled, sheep were driven 50kms south to Canally woolshed on the Murrumbidgee River to be shorn. The wool was loaded onto barges to be taken by steamers to various ports in the river system. The property is now a wool, sheep meat and grain producing enterprise. The installation of a 70km pipeline feed from Lake Benanee and the Murray River has improved management of total grazing pressure which in turn has significantly reduced the effect of drought and erosion. The pipeline and its many associated watering points has allowed for more strategic management, thus reducing the impact of domestic and non-domestic animals on the surrounding environment.

31. Box Creek meanders through many Homebush Landcare properties eventually making its way to the Murrumbidgee River. Cringadale Station has also undertaken rabbit control measures and regeneration work.

32. This is the intersection of the Prungle Mail Road and the Sturt Highway. Turn left here to return to Balranald or turn right to Euston.

33. This is the turn-off to the Balranald Weir

34. If you are commencing your Mungo Loop outback journey from Euston, turn left at no. 34, the intersection of the Sturt Highway and Euston Prungle Road. The Loop will commence at no. 28.

THE MUNGO LOOP PROJECT IS AN INITIATIVE OF THE HOMEBUSH LANDCARE GROUP INC.



Photo Credit: Michael Curwood

FIVE RIVERS

FISHING TRAIL



5 Rivers Fishing Trail - Murray, Murrumbidgee, Lachlan, Wakool & Edward Rivers

MURRAY RIVER

The River Murray, Australia's longest river at 2,375kms rises in the Australia Alps and flows through our area from Swan Hill towards Robinvale and Euston in the west. Weir Lock 15, just downstream from Euston, creates a very wide river upstream that provides an excellent water playground accessed by a number of boat ramps detailed on the 5 Rivers Fishing Trail map.

The Murray River offers excellent fishing from both the shore or trolling aboard a boat. In slower moving sections lure casting is also very worthwhile. Fishing on the Murray River between Swan Hill and Mildura has improved significantly in the last few years, particularly for those fisher folk trying to catch a Murray Cod.

MURRUMBIDGEE RIVER

The Murrumbidgee River flows for 1,485kms from the Fiery Ranges south west of Cooma in the Snowy Mountains, before it reaches our area. The word Murrumbidgee means 'big river' in local Aboriginal language. Fortunately the weir pool created by the

Balranald weir provides year round consistent water levels for Balranald and an attractive foreshore on the south side of town. In 1829, Charles Sturt and his party rowed down the length of the 'Bidgee, past the present site of Balranald, to the Murray and then down the Murray to sea.

In a contemporary Sydney Morning Herald article (1858) Balranald was described as: "This obscure and miserable township situated on the Lower Murrumbidgee is here attracting a considerable share of attention as being one of those rowdy places for which the Australian bush in the interior has become so famous". Balranald and its community has certainly not retained that image and visitors often comment on the locals showing pride in the presentation of the town and its gardens.

WAKOOL RIVER

The Wakool River is actually a branch of the Edward River and is rejoined by the Edward at Kyalite. Both the Wakool and Edward Rivers have had the benefit of annual fish restocking programs supported by the Kyalite Angling Club for many years. Kyalite Regional Park begins 10km east along the Moulamein Road and covers 577 ha, enveloping the Wakool and a plenitude of wildlife. The Wakool rejoins the Murray north west of Kyalite and the junction can be reached from the Murray Valley Highway.

EDWARD RIVER

'Bob Ford was a keen fishing member in both the fresh and saltwater. His favourite club trip was the annual pilgrimage to Kyalite on the Edward river at Easter. Bob was re-elected President in 2001 and held the position until his passing away... the longest serving President of Preston Angling Club ...' These words about Robert Ford, expressed by Allen Russell on the Preston Angling Club website, are a poignant reflection that resonate with hundreds of fishermen who regularly visit the Kyalite area. The Edward River is actually a branch of the Murray, branching off just east of Mathoura and meanders through Deniliquin on its way past Moulamein. The Edward re-joins the Wakool River just upstream from Kyalite and is a favourite fishing location.

LACHLAN RIVER

The Lachlan River rises in the central highland 13km east of Gunning and flows into the Great Cumbungi Swamp near Oxley, west of Balranald. The Great Cumbungi Swamp is approximately 500 sq kms of wetland and floodplain for the Lachlan that joins the Murrumbidgee River to the south.

By the time the Lachlan reaches Oxley it is already part of a delta that has seen off a number of branches, including Willandra Creek, that originally filled the series of lakes now part of the Willandra Lakes World Heritage Area with Mungo National Park as its centre piece, during the last ice age.

As the Lachlan does not receive the spring snow melt of the Bidgee and Murray River, water flows in the Lachlan have suffered accordingly over the last few years of the very dry and drought conditions being experienced in New South Wales.

Access to our rivers and lakes

A number of the lakes shown on the map (overleaf) are dry lakes. However, Yanga Lake has recently been filled.

Please note in most instances, unless otherwise shown, foreshore land for lakes and rivers sections will be on private property. Abuse of access privileges to some sites has led to concerned property owners and padlocked gates.

It therefore is essential for fisher folk to seek the landholders approval to access any foreshore land on private property.

You are also encouraged to:

1. Talk to local fishing folk at any of the centres mentioned below about local conditions and access to fishing sites; and
2. Please don't leave your rubbish behind
3. Adhere to fire restrictions

Local fishing clubs

The 4 local fishing clubs are playing a continued and active role in restocking their local rivers for the benefit of future anglers.

BALRANALD DISTRICT EX-SERVICES ANGLERS CLUB

CONTACT Balranald & District Memorial Ex-Services Club on 03 5020 1205.

KYALITE HAPPY HOOKERS

CONTACT On the pub website www.kyalitepub.com

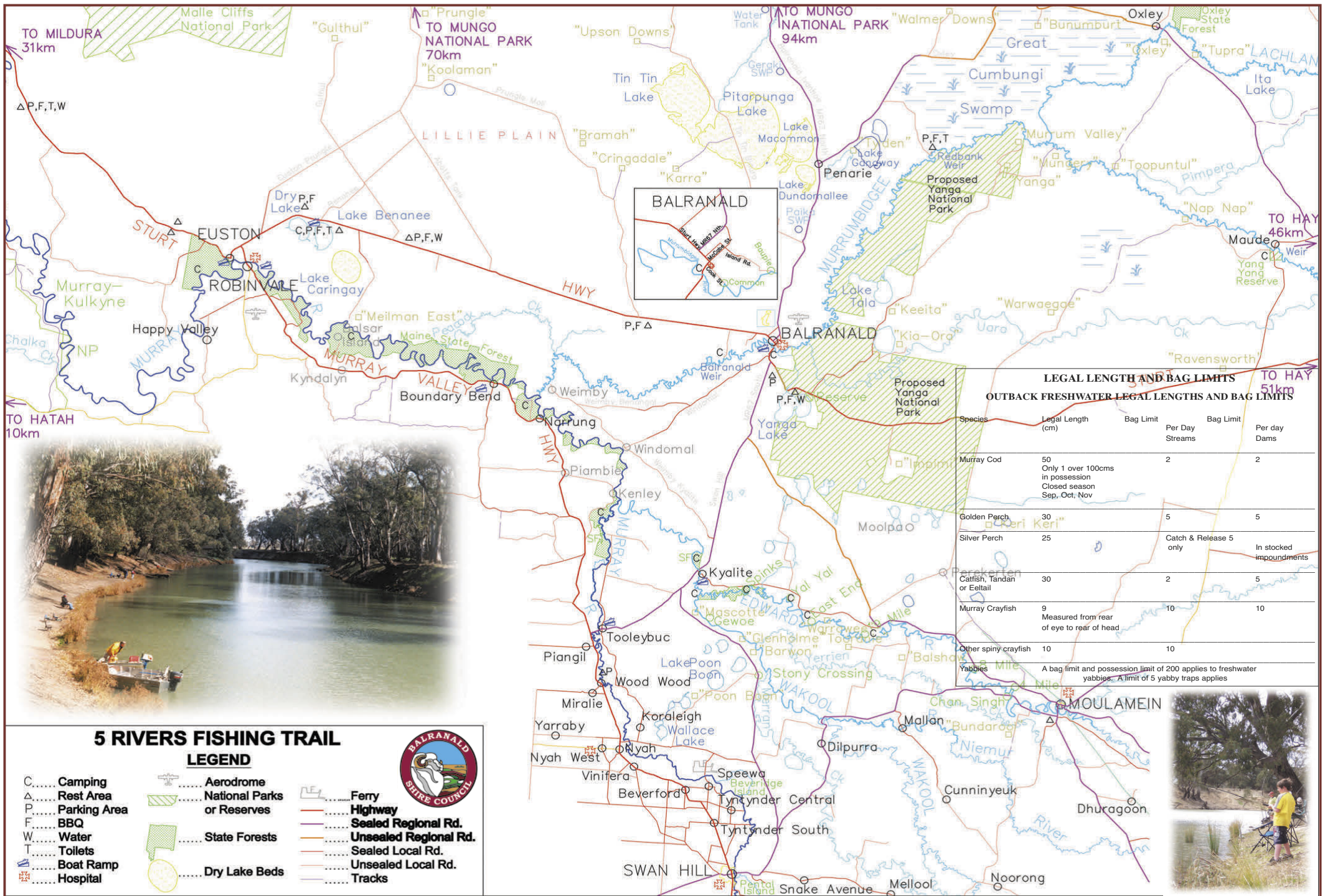
ANGLERS CLUB EUSTON

CONTACT Euston Bowling and Recreation Club on: 03 5024 4244.

OXLEY ANGLING CLUB

CONTACT Brian Jouning (Secretary) Oxley c/- 293 Island Road Cohuna, Victoria 3568





TOURS



NSW National Parks & Wildlife Service



There are two National Parks within Balranald Shire, Yanga National Park and Mungo National Park. NSW National Parks & Wildlife Service operate tours at both locations and more information is available by contacting Balranald Visitor Information Centre.

TOURS AVAILABLE

MUNGO Aboriginal Tours are the best way to learn about Mungo National Park and its ancient heritage with the people who have lived the landscape for 45,000 years. Aboriginal Discovery Tours are conducted by Aboriginal rangers from the three tribal groups of the Willandra Lakes region. Tours include a variety of activities and operate during school holidays and by special arrangement.

For more details or to book a tour contact Mungo 03 5021 8900 or Balranald Visitor Information Centre on 03 5020 1599

YANGA Explore the wonderful Yanga National Park, Woolshed and Homestead, taking you back to a time when Yanga was one of the Riverina's most productive pastoral stations. To see inside Yanga Homestead you need to pick up an audio guide and key from either Yanga National Park Office or Balranald Visitor Information Centre.

For more details or to book a tour contact Yanga National Park office on 03 5020 1764 or Balranald Visitor Information Centre on 03 5020 1599

Outback Geo Adventures



Balranald Tour operator Outback Geo Adventures specialise in tours to the spectacular World Heritage listed Mungo National Park, the Willandra Lakes and the stunning floodplains and wetlands of Yanga National Park which boasts natural wonders and historical attractions with heritage significance.

TOURS AVAILABLE

MUNGO Sunset, Day or Full Moon Tour

YANGA Sunset, Half Day, Full Day or Sunrise Tour

For more details or to book a tour contact Outback Geo Adventures on 0407 267 087 or Balranald Visitor Information Centre on 03 5020 1599

Mungo Lodge Tours



Join Mungo Lodge Tours for an adventure you'll never forget in the spectacular internationally renowned World Heritage Mungo National Park one of the world's most ancient and precious cultural treasures. Our experienced local guides will take you on a journey through this beautiful land in safety, comfort and style.

TOURS AVAILABLE

MUNGO Day Tour, Sunset Tour, Full Moon Tour or see the Walls of China from the air with a Mungo scenic flight

For bookings telephone 03 5029 7297 or Balranald Visitor Information Centre on 03 5020 1599

ACCOMMODATION



MOTELS



BALRANALD MOTOR INN



The Balranald Motor Inn is a great place to stay with several room options to suit any need. The Billabong Restaurant is conveniently located at the front of the Motel for guests and locals alike. The motel offers room service from the restaurant menu and fully cooked or continental breakfasts to your room.

LOCATION 154 Market Street, Balranald NSW

PHONE 03 5020 1104 **EMAIL** balranaldmotorinn154@gmail.com

www.balranaldmotorinn.com



BALRANALD CLUB MOTEL

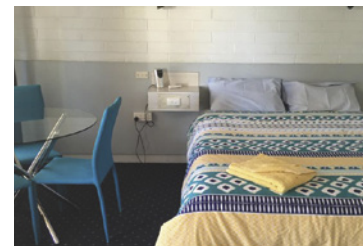


The Balranald Club Motel is a modern 4 star motel situated in the centre of Balranald. The motel aims to provide high standard accommodation and service at a reasonable price. Each room is smoke free, scrupulously clean and equipped with a luxurious pillow top queen size bed and modern bathroom with amenities.

LOCATION 112 Market Street, Balranald NSW

PHONE 03 5020 0444 **EMAIL** motel@balranald.net

www.balranald.net



MOTEL CAPRI BALRANALD



This comfortable hotel in Balranald offers free wireless internet, as well as room service and a BBQ/picnic area. It also provides on-site parking. Capri Motel Balranald offers spacious rooms equipped with a refrigerator, tea and coffee making facilities and a toaster, plus all the essentials to ensure an enjoyable stay. Those staying at the property can wake up to a satisfying breakfast prepared every morning.

LOCATION 207 Market Street, Balranald NSW

PHONE 03 5020 1201 **EMAIL** info@thecaprimotel.com.au



STURT MOTEL BALRANALD



The Sturt Motel consists of 14 clean, comfortable, non-smoking, ground floor units (including family units) located in a quiet garden area. Other motel features include a delicious breakfast menu, ample parking, swimming pool, barbecue and entertainment area. The motel is centrally located just off the main highway in a quiet location and only metres to restaurants, shops & the Murrumbidgee River.

LOCATION 32 River Street, Balranald NSW

PHONE 03 5020 1309 **EMAIL** sturtmotelbalranald@bigpond.com



SHAMROCK MOTEL/HOTEL BALRANALD



The Shamrock Motel entrance is conveniently located on the Sturt Highway. The motel is just a few steps to the central business district and just a short walk to the Murrumbidgee River. The Shamrock Motel has 23 rooms including two interconnecting Family Rooms. The Shamrock Hotel, which is right next door, serves lunch and dinner counter meals.
LOCATION 96 Market Street, Balranald NSW
PHONE 03 5020 1607 **EMAIL** shamrockbalranald@gmail.com



EUSTON CLUB MOTEL



The Euston Club Motel is situated on the banks of the Mighty Murray River, offering quality accommodation with absolute river frontage. Accommodation is complimented by the fantastic facilities of the Euston Bowling Club. Start each morning watching the local wildlife & enjoy the tranquility of the river.
LOCATION 9 Murray Terrace, Euston NSW
PHONE 03 5026 4244 **EMAIL** accommodation@eustonclub.com.au
www.eustonclub.com.au/euston-motel



EUSTON MOTEL



The Euston Motel is new and modern, offering spacious rooms with a contemporary design and genuine service. Family owned and operated, the friendly and helpful staff are always at hand to ensure that you enjoy the most out of your stay.
LOCATION 2 Sturt Highway, Euston NSW
PHONE 03 5026 1133 **EMAIL** reception@eustonmotel.com.au
www.eustonmotel.com.au

SOMETHING UNIQUE



MUNGO SHEARING QUARTERS

The recently refurbished Shearers Quarters are in the heart of the park, right beside the Visitor Centre and the woolshed. It's the perfect place to have an enjoyable stay while you explore Mungo. The accommodation can cater for up to 27 people in 5 rooms. You will need your own bedding (sleeping bags, pillows, blankets, etc)
LOCATION Arumpo Road, Mungo National Park
PHONE 03 5020 8900 **EMAIL** buronga.office@environment.nsw.gov.au
www.nationalparks.nsw.gov.au/camping-and-accommodation/accommodation/Mungo-Shearers-Quarters



LAKE PAIKA ACCOMMODATION



The Lake Paika Station offers unique accommodation on one of the most historic station in the Balranald district and is 17kms north of Balranald on the Ivanhoe Road. Accommodation in the restored original Workman's Quarters offers guests a comfortable and simple stay in a stunning setting overlooking Lake Paika. We have recently refurbished Duff's Cottage, a fully self-contained 3 bedroom cottage - perfect for families and sleeps six people. Caravans and camping welcome. Spring and Autumn "Glamping" available.
LOCATION 1725 Balranald/Ivanhoe Road, Penarie
PHONE 0427 206 801 **EMAIL** lakepaikaaccommodation@gmail.com
www.lakepaikaaccommodation.com.au

CARAVAN PARKS, CABINS & LODGES



BALRANALD CARAVAN PARK



The Balranald Caravan Park is situated on the banks of the Murrumbidgee River. The Park has deluxe, standard and basic cabins as well as drive through grass powered caravan sites and spacious grassed camp sites. The park has modern amenities, disabled facilities, a kiosk and a well equipped camp kitchen.
LOCATION 60 Court Street, Balranald NSW
PHONE 03 5020 1321 **EMAIL** info@balranaldcaravanpark.com.au
www.balranaldcaravanpark.com.au



EUSTON RIVERFRONT CARAVAN PARK



The Euston Riverfront Caravan Park is on the Murray River with river frontage exclusively for use by park guests. It is a family owned and operated park with clean amenities and friendly service and is within easy walking distance to the Euston Club and Euston Hotel. The park has powered sites, non-powered sites and cabins. You can be assured of caring professional service when you stay at the park.
LOCATION 27 Murray Terrace, Euston NSW
PHONE 03 5026 1543 **EMAIL** info@eustoncaravanpark.com.au



KYALITE CARAVAN PARK/PUB/GENERAL STORE



This delightful caravan park in Kyalite is situated on the banks of the Wakool River, with just a short distance to the Edwards River. The park offers camping sites, basic cabins and en suite cabins. The Kyalite Pub is right next door and has a restaurant and bar. There is also a General Store located at the Pub for basic needs.
LOCATION Talbot/Kyalite Road, Kyalite NSW
PHONE 035038 2221 **EMAIL** kyalitepub@mqp.com.au
www.kyalitepub.com



Homebush Caravan Park & Hotel



Throw down your swag, pitch your tent, grab a room in the Shearer's Quarters, choose a unit or back up your caravan or camper. However you lay out your pillow, you're welcome here. And so are your dogs. Meet the locals, and enjoy a drink and a darn good meal while you're at it. With kangaroos wandering by, clear views of both sunrise and sunset and cold beer on tap, this is the real Australia.
LOCATION Balranald/Ivanhoe Rd, Penarie NSW
PHONE 03 5020 6803 **EMAIL** homebushhh@gmail.com



EUSTON CLUB CABIN RESORT



The Euston Club Cabin Resort offers great 'self-contained' accommodation overlooking the Murray River. Each of the comfy two & three bedroom cabins include linen, full kitchen facilities, bathroom and lounge room. In addition, the cabin resort gives visitors access to all facilities of the Euston Club which is next door to the resort.
LOCATION 2-28 Nixon Street, Euston NSW
PHONE 03 5026 4244 **EMAIL** accommodation@eustonclub.com.au
www.eustonclub.com.au/euston-cabin-resort



MUNGO LODGE

The Mungo Lodge was first built by a private investor who had a dream of sharing the majesty and mystery of Mungo National Park. Mungo Lodge offers 17 Australian style accommodation rooms which complement the environment and enhance the three key guest experiences of: Food & Wine, Culture and Environment.

LOCATION Arumpo Road, Arumpo NSW

PHONE 1300 663 748 EMAIL stay@mungolodge.com.au

www.mungolodge.com.au



FREE CAMPING SITES & 24 HOUR RV STOPS



CAMPING SITES AROUND BALRANALD

BALRANALD LOW LEVEL WEIR PICNIC/CAMPING SITE

LOCATION 6km West of Balranald on the Sturt Highway

- Then turn off from the main road for 4 km on a gravel road.

CONTACT Balranald Visitor Information Centre: 1800 444 043



CAMPING SITES AT YANGA NATIONAL PARK

MAMANGA CAMPGROUND

CONTACT Yanga Office 03 5020 1764

LOCATION From Balranald travel east along Sturt Highway for 2km.

Turn right onto Windomal Road. Continue for approx 4.2km before turning right at the sign to Mamanga campground. Turn-off is 1.2km past the turn-off to Yanga Woolshed.

THE WILLOWS CAMPGROUND

CONTACT Yanga Office 03 5020 1764

LOCATION From Balranald travel east along Sturt Highway for 23km.

Turn right at the blue tent sign and continue along. After 800m turn left at The Willows campground sign.



CAMPING SITES AT MUNGO NATIONAL PARK

THE MAIN CAMPGROUND

LOCATION The Main Campground is at the end of Arumpo Road shortly before the T-intersection at Mungo National Park

BELAH CAMPGROUND

LOCATION Once you arrive at the Mungo Visitor Centre, follow the Self-Guided Drive Tour to the campground.

CONTACT The Buronga Office: 03 5021 8900



24 HR RV STOPS

BALRANALD DISCOVERY CENTRE, BALRANALD

CONTACT 1800 444 043

LOCATION 83 Market Street, Balranald

GREENHAM PARK, BALRANALD

CONTACT 1800 444 043

LOCATION Church Street, carpark behind the water towers

LAKE BENANEE, EUSTON

CONTACT 1800 444 043

LOCATION 60 km west of Balranald on the Sturt Highway



CAFES & RESTAURANTS



BALRANALD BAKERY & CAFE

The Balranald Bakery is renowned for its wonderful range of cakes, slices, snacks, sandwiches and great coffee. The bakery/cafe is popular for their freshly baked bread, homemade pies, pasties and sausage rolls and for their "to die for" vanilla slices! The bakery has a warm & friendly atmosphere, a perfect place to meet with friends and family. The bakery also has free Wi-Fi for the convenience of customers & travellers

LOCATION 113 Market Street, Balranald NSW

PHONE 03 5020 1395 EMAIL balranaldbakery@outlook.com



DISCOVERY CAFE BALRANALD

Located at the heart of the tourist precinct at the Balranald Discovery Centre, the Discovery Cafe is known as the cafe with "a touch of Melbourne in Balranald". The food served at the cafe looks and tastes delicious! The cafe is very popular with both visitors and locals. It is a perfect place to stop, relax and chat over a delicious cake and coffee or have something extra special off the daily menu.

LOCATION 83a Market Street, Balranald NSW

PHONE 0408 051 975 EMAIL sgiansir@bigpond.net.au



EUSTON RIVERFRONT CARAVAN PARK & CAFE

The Riverfront Caravan Park & Cafe is located in Murray Terrace, having the convenience of the main street including a Cafe, plus the serenity of the beautiful Murray River. The Euston Riverfront Caravan Park has river frontage exclusively for use by park guests. It is a family owned and operated park with clean amenities and friendly service and the cafe is a perfect place for a relaxed coffee during your stay.

LOCATION 27 Murray Terrace, Euston NSW

PHONE 03 5026 1543 EMAIL info@eustoncaravanpark.com.au





THE EUSTON CLUB RESORT STATION 46 BISTRO, BAR & CAFE

The Euston Club is the region's most renowned spot for a fantastic dining experience and only dining experience on the Murray River. The Club's Station 46 is open for breakfast and has an ALL DAY Cafe & Bar. Station 46 abounds with a comfortable, friendly atmosphere and river views either inside or outside on the Club's signature covered balcony area. Station 46 has a diverse menu that caters for every taste.

LOCATION 2-28 Nixon Street, Euston NSW
PHONE 03 5026 4244 EMAIL reception@eustonclub.com.au
www.eustonclub.com.au



BILLABONG RESTAURANT

Located at the front of the Balranald Motor Inn motel is the Billabong Restaurant where you can enjoy everything from a cold beer to a local wine, or a mouthwatering steak to a seafood basket. Open Monday to Friday from 6pm to motel guests and locals, they also offer the full menu as room service or take-away.

LOCATION 154 Market Street, Balranald NSW
PHONE 03 5020 1104 EMAIL balranaldmotorinn154@gmail.com
www.balranaldmotorinn.com



MUNGO RESTAURANT (MUNGO LODGE)

For a unique outback dining experience, The Mungo Restaurant & Bar is one not to be missed. The restaurant is open 7 days a week for breakfast, lunch & dinner. From true hearty outback breakfasts, simple and refreshing casual lunches, to delicious dinners. Mungo Lodge Restaurant brings a new meaning to dining in the outback.

LOCATION Arumpo Road, Arumpo NSW
PHONE 1300 663 748 EMAIL stay@mungolodge.com.au
www.mungolodge.com.au



PUBS & CLUBS



SHAMROCK HOTEL/MOTEL BALRANALD

Good old-fashioned pub with the all the popular pub meals on the menu. Large servings and good value for money and always a cold beer on tap! Walking distance to all the main shops and next door to the Shamrock Motel.

LOCATION 35 Mayall Street, Balranald NSW
PHONE 03 5020 1607
EMAIL shamrockbalranald@gmail.com



BALRANALD EX-SERVICE'S CLUB

The Balranald Ex-Service's Memorial Club is a Not-for-Profit organization set up for Returned, Ex-Service, Serving & local community men and women. The Club is currently using and trading under the name of Balranald Club. Facilities include a Bistro, Tab Lounge, Lounge Bar, Coffee Lounge Area, Auditorium and Meeting Room.

LOCATION 116 Market Street, Balranald NSW
PHONE 03 5020 1205 EMAIL manager@balranaldclub.com.au
www.balranaldclub.com.au



PUBS & CLUBS



THE EUSTON CLUB RESORT

The club is nestled amongst the river red gums, on the banks of the mighty Murray. With approximately five acres of grounds and facilities, the Euston Club offers both visitors and locals alike, a whole host of great options or accommodation, entertainment and business, relaxation and recreation.

LOCATION 2-28 Nixon Street, Euston NSW
PHONE 03 5026 4244 EMAIL reception@eustonclub.com.au
www.eustonclub.com.au



THE KYALITE PUB

Come & have a drink or two with the new owners Joel & Jodie. Meals will be available Thursdays through to Saturdays.

LOCATION Talbot/Kyalite Road, Kyalite NSW
PHONE 035038 2221
EMAIL kyalitepub@mqq.com.au



HOMEBUSH HOTEL PENARIE

One of the true 'back country pubs' which has stood the test of time, and still remains the 'hub' of the vast Western Lands Division of NSW between Balranald and Ivanhoe. Relax in the beer garden, enjoy delicious and affordable meals in the dining area, and stroll through the history room, settle in at the bigger bar, grab takeaways or book the function room.

LOCATION Balranald/Ivanhoe Rd, Penarie NSW
PHONE 03 5020 6803 EMAIL homebushhh@gmail.com



THE EUSTON ROYAL HOTEL

The Euston Royal Hotel in Euston NSW is a warm, friendly pub with good quality pub meals. Perfect for a lunch or dinner stop!

LOCATION 31 Murray Terrace Euston NSW
PHONE 03 5026 3638 EMAIL royalhotелеuston@bigpond.com



TAKE-AWAYS



BALRANALD PIZZA & TAKEAWAY

Let the friendly staff at the Balranald Takeaway tempt you with their range of snacks, cakes and slices, pizzas, takeaway food and meals. Enjoy a relaxing Allegro coffee! Offering outdoor dining, coffee lounge, spacious indoor or outdoor dining, dine in or takeaway.

LOCATION 115 Market Street, Balranald NSW
PHONE 03 5020 1114 EMAIL balranaldtakeaway@gmail.com



EUSTON TAKEAWAY/GPO/GENERAL STORE

This is a family friendly takeaway shop, local postoffice and general store. Eat in or takeaway and opened 7 days a week.

LOCATION 39 Murray Terrace Euston NSW
PHONE 03 5026 3667
EMAIL mannix@internode.on.net

LOCAL STORES



RETAIL STORES



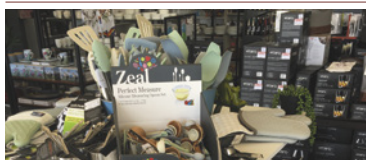
IN THE GARDEN

Gifts | Florist | Garden Supplies
LOCATION 101b Market Street, Balranald, NSW
PHONE 03 5020 1490
EMAIL inthegarden2715@gmail.com



BALRANALD SPORTS

Sportswear | Leisurewear | Jewellery | Accessories
LOCATION 101a Market Street, Balranald, NSW
PHONE 03 5020 1445
EMAIL balranaldsports@commander.net.au



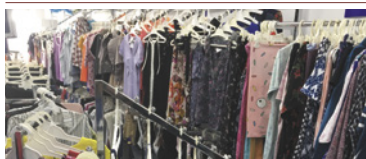
LE-GEES

Homeware's | Manchester | Furniture | Kitchenware
LOCATION 94 Market Street, Balranald, NSW
PHONE 0427 200 589
EMAIL legees@hotmail.com



CONWAYS

Leisurewear | Sportswear | Work-wear | Underwear
LOCATION 34 Mayall Street, Balranald, NSW
PHONE 03 5020 1330
EMAIL conways@dragnet.com.au
www.leoconwayagencies.com.au



VINNIES FASHION

Pre-loved Fashion
LOCATION 91 Market Street, Balranald NSW
PHONE 03 5020 1241



JUST FILLIN' IN TIME

Upcycle – Unique pieces of furniture and decor
LOCATION 80 Market Street, Balranald NSW
PHONE 0437 200 475
EMAIL justfillinintime@outlook.com



1848 COLLECTION

Homewares | Gift Store | Events
LOCATION Euston Station, Lot 4 Sturt Highway, Euston NSW
PHONE 0409 217 124
EMAIL enquiries@1848euston.com
www.1848collection.com.au



BODINNAR'S THRIFTY LINK HARDWARE

Hardware | Homeware's
LOCATION Court Street, Balranald NSW
PHONE 03 5020 1633
EMAIL lbodinnar@dragnet.com.au



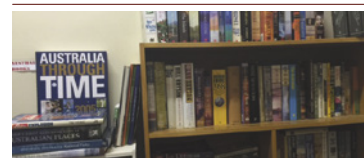
BALRANALD NEWSAGENCY

Publications | Stationery | Gifts
LOCATION 103 Market Street, Balranald NSW
PHONE 03 5020 1642
EMAIL balranaldnewsagency@bigpond.com



BALRANALD PHARMACY

Dispensary | Health products | Cosmetics | Gifts
LOCATION 107 Market Street, Balranald NSW
PHONE 03 5020 1618
EMAIL balranaldpharmacy@hotmail.com



CANASSIST SECONDHAND BOOKSHOP

Pre-loved Books
LOCATION 92A Market Street, Balranald NSW
EMAIL BalranaldCanAssist@gmail.com

GROCERIES



MEAT ON MARKET

High quality meats & premium cuts
LOCATION 105A Market Street, Balranald NSW
PHONE 03 5020 1689



BALRANALD IGA & LIQUOR

Groceries | Liquor | Deli
LOCATION 102 Market Street, Balranald NSW
PHONE 03 5020 1612
EMAIL doyleiga@bigpond.net.au



BALRANALD FOODWORKS

Groceries | Deli | Ready-to-go Food
LOCATION 121 Market Street, Balranald NSW
PHONE 03 5020 1626
EMAIL foodworksbalranald@bigpond.com



BEAUTY & WELLBEING

SERVICES & AMENITIES



IMAGE 101

Hair & Beauty

LOCATION 101c Market Street, Balranald NSW

PHONE 03 5020 0331

EMAIL chlo85@hotmail.com



SALON ONE ONE FIVE

Hair & Beauty

LOCATION 115A Market Street, Balranald NSW

PHONE 03 5020 1867

EMAIL wendybarker77@hotmail.com



BALRANALD BOWEN & WELLBEING CENTRE

Holistic Therapies | Massages | Wellbeing Products

LOCATION Corner Market & River Streets, Balranald NSW

PHONE 0428 201 008 (Wyn) 0427 517 194 (Jenny)



FUEL & AUTOMOTIVE



CALTEX SERVICE STATION ON MARKET STREET

Fuel | Diner | Shop

LOCATION 99 Market Street, Balranald NSW

PHONE 03 5020 1603

EMAIL balranald@nuvpetroleum.com



WESTSIDE SHELL PETROLEUM BALRANALD

Fuel | Fast Food | Shop

LOCATION 203 Market Street, Balranald NSW

PHONE 03 5020 0123

EMAIL balranaldwp@gmail.com



S & A PAPA DISCOUNT FUEL

Discount Fuel

LOCATION 45 We Street, Balranald NSW

PHONE 03 5020 1734 PHONE 0409 403 312

EMAIL spapampd@iinet.net.au



BP 24HR ROADHOUSE & TRUCKSTOP

Fuel | Restaurant | Shop | Accommodation

LOCATION Sturt Highway, Balranald NSW

PHONE 03 4011 3000

EMAIL balranaldroadhouse@bigpond.com



EUSTON SERVO

**Shell Card Accepted*

Fuel | Shop | Food

LOCATION 49 Murray Terrace, Euston NSW

PHONE 03 5026 3697

FAX 03 5026 1701



NRMA ELECTRIC CAR CHARGING STATION

LOCATION 83 Market Street, Balranald NSW

(Behind the Visitor Information Centre at the 24 RV free camp spot)

CONTACT Balranald Visitor Information Centre

FUEL & AUTOMOTIVE



BALRANALD AUTO ELECTRICS

Automotive | Electrical services

LOCATION 30 Moa Street, Balranald NSW

PHONE 03 5020 1228

EMAIL balautolec@bigpond.com



NRMA & BALRANALD DIESEL SERVICES

General Automotive Repairs | Roadside Assistance

LOCATION 201 Market Street, Balranald NSW

PHONE 03 5020 1233

EMAIL baldiesel@dragnet.com.au



BALRANALD HYDRAULICS

Hydraulic Services

LOCATION 209 Market Street, Balranald NSW

PHONE 03 5020 1058 | 0427 502 010



BALRANALD TYRE SERVICE

Wheel & Tyre Services | Automotive Repairs

LOCATION 191 Market Street, Balranald NSW

PHONE 03 5020 0309



BALRANALD PANELS

Services for your wheels & tyres

LOCATION 127 Market Street, Balranald NSW

PHONE 03 5020 1354



ACM AUTOMOTIVE

Auto Repair | Towing Service

LOCATION 25 Cary Street, Euston NSW

PHONE 03 5026 1671



BOSS AUTOMOTIVE

Auto Repair

LOCATION 29 Murray Valley Hwy, Euston NSW

PHONE 03 5026 1155

HEALTH & EMERGENCY SERVICES



BALRANALD & EUSTON/ROBINVALE SERVICES

EMERGENCY: 000 (Ambulance, Police, Medical & Fire)

BALRANALD HEALTH SERVICES (Balranald District Hospital)
41-43 Market Street Balranald NSW | 03 5071 9800

ROBINVALE DISTRICT HEALTH
128-132 Latje Road, Robinvale VIC | 03 5051 8111

ROBINVALE DENTIST
160 Bromley Road, Robinvale VIC | 03 5026 3536

BANKS & ATMS



BANKING OUTLETS & ATM MACHINES

WESTPAC BANK & ATM
93 Market Street Balranald NSW | 03 5020 2600

BENDIGO BANK AGENCY AT LE-GEES
94 Market Street, Balranald NSW | 03 5020 1633

ATM MACHINE AT BALRANALD EX-SERVICES CLUB
116 Market Street, Balranald NSW | 03 5020 1205

ATM MACHINE AT THE EUSTON CLUB
Nixon Street, Euston NSW | 03 5026 4244

ATM MACHINE AT THE EUSTON ROYAL HOTEL
31 Murray Terrace, Euston NSW | 03 5026 3638

CHURCHES & CLERGY



CHURCHES & CLERGY

ST JOSEPH'S CATHOLIC CHURCH
106 Church Street Balranald NSW

PRESBYTERIAN CHURCH
47 Bank Street, Balranald NSW

ST BARNABAS ANGLICAN CHURCH
Corner of Mayall & Ballandella Streets, Balranald NSW

BALRANALD HARVEST CHRISTIAN CENTRE
Call 03 5020 0486 for meeting location

PUBLIC TOILETS & SHOWERS



PUBLIC TOILETS IN BALRANALD & EUSTON

BALRANALD DISCOVERY CENTRE PRECINCT (Toilets/Free Showers)
83 Market Street Balranald NSW

BALRANALD SENIOR CITIZENS BUILDING (Toilets)
106 Market Street, Balranald NSW

LIONS PARK BALRANALD (Toilets)
Market Street, Balranald NSW

GREENHAM PARK BALRANALD (Toilets)
Church Street, Balranald NSW

LAKE BENANEE NEAR EUSTON (Toilets)
60 Kilometres from Balranald on the Sturt Highway towards Euston NSW

TOWER PARK EUSTON (Toilets)
Murray Terrace next to the water towers, Euston NSW

EUSTON RECREATION GROUND (Toilets/Free Showers)
Sturt Highway, Euston NSW

EUSTON BOAT RAMP *behind Euston Club* (Toilets)
Murray Terrace, Euston NSW

LIBRARY



BALRANALD PUBLIC LIBRARY

LOCATION We Street Balranald, NSW

PHONE 03 5020 1388

POST OFFICES



POST OFFICES IN BALRANALD & EUSTON

BALRANALD POST OFFICE
117 Market Street, Balranald | 03 5020 1150

EUSTON GPO/GENERAL STORE/TAKEAWAY
39 Murray Terrace, Euston NSW | 03 5026 3667

PICNIC SPOTS



MEMORIAL DRIVE/THE BEND RESERVE
We Street Balranald NSW

THE BALRANALD DISCOVERY CENTRE
83 Market Street, Balranald NSW

BALRANALD LIONS PARK
191 Market Street, Balranald NSW

BALRANALD LOW LEVEL WEIR
6km west of Balranald off the Sturt Highway



REDBANK WEIR
60km north of Balranald off the Balranald/Ivanhoe Road

LAKE BENANEE
60 Kilometers west of Balranald on the Sturt Highway towards Euston

ANDERSON PARK EUSTON
Corner of Selwyn & Perry Streets, Euston NSW

PICNIC AREA NEAR THE EUSTON CLUB
Near the boat ramp on the Murray River beside the Euston Club

BALRANALD AERODROME



Balranald Aerodrome is a small country aerodrome located 1 nautical mile (1.9km, 1.2 mi) north east of Balranald, on the Ivanhoe Road. It sits at altitude of 210 ft (64 m), and has two runways: 18/36, an asphalt runway 1,185 m (3,888 ft) long, and 08/26, a grass runway 650 m (2,133 ft) long.

Aerodrome facilities include: Lockable aircraft hangers, aircraft tie down points, pilot controlled landing lights, wet weather waiting area and toilet facilities

Balranald Airport IATA Code: BZD
Balranald Airport ICAO Code: YBRN
Latitude: -34.6231994629
Longitude: 143.57699585
City: Balranald
Country: Australia
World Area Code : 802
Airport Type: Medium
Timezone: Australia/Sydney
Balranald Airport Timezone: GMT +10:00 hours



While Balranald offers all the conveniences of a regional centre you may want to explore the less travelled routes during your visit. You should be aware that some of the roads will be unsealed and you will need to take some precautions to ensure safety.

- Always tell someone reliable where you are going and when you will be back. Mobile phone coverage is limited in some areas.
- Always carry drinking water and food in the vehicle.
- Try to avoid travelling at sun up and sun down as this is when the wildlife like to venture out to feed.
- Always drive according to road and weather conditions. Check the "visit balranald" website for the latest road conditions. You can also contact the Visitor Information Centre on 1800 444 043.
- Watch for kangaroos and emus. They generally travel in pairs. If you see one, look out for another.



- When road conditions are bad, some roads will be closed. This is for your safety. Please do not travel on closed roads.
- In the event of an emergency stay with your vehicle. Vehicles are easier to spot than people.
- Consider carrying a personal EPIRB (Emergency Position Indicating Radio Beacon)



BALRANALD VISITOR INFORMATION CENTRE

83 Market Street, Balranald NSW 2715

PHONE 1800 444 043 or 03 5020 1599

EMAIL infocentrestaff@balranald.nsw.gov.au

WEB www.visitbalranald.com.au

OPEN DAILY Open Daily (Closed Christmas Day & Good Friday)

