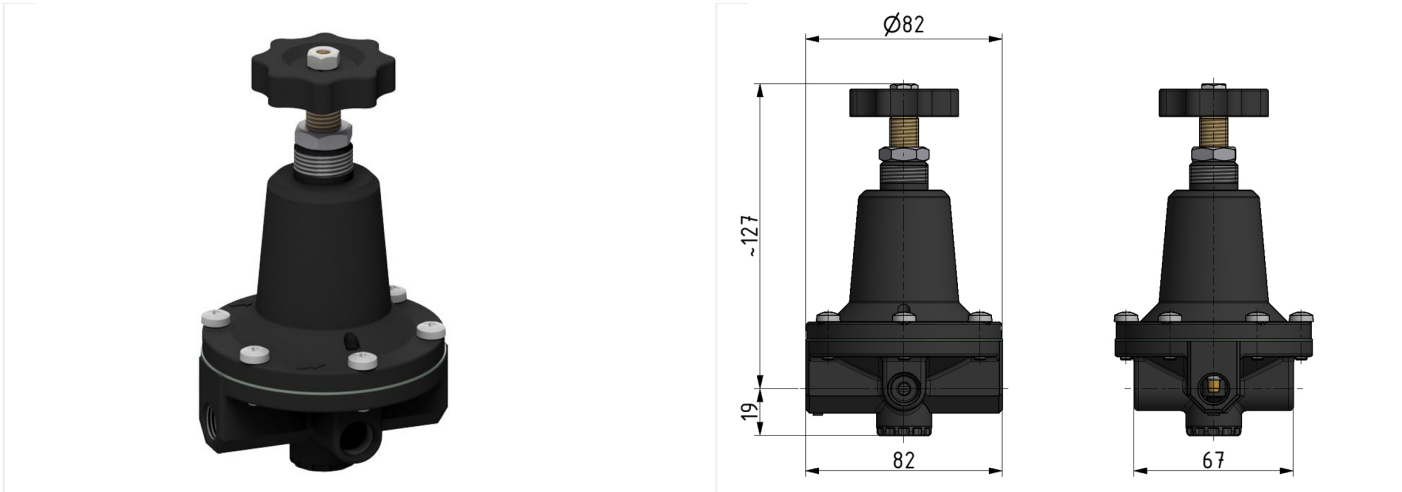
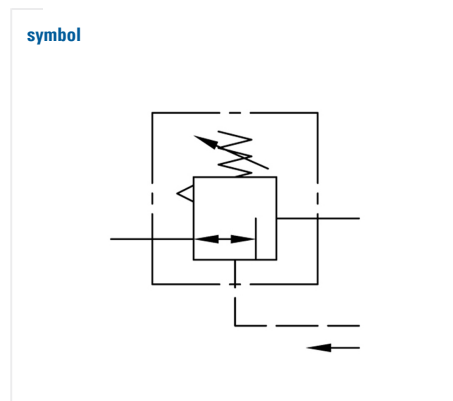
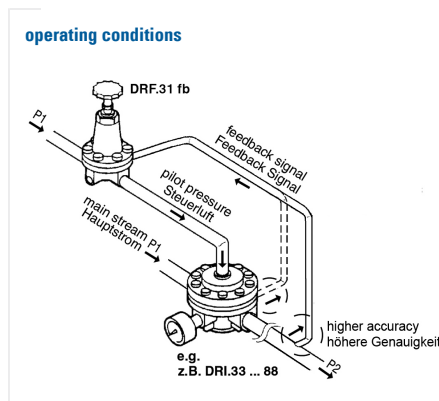
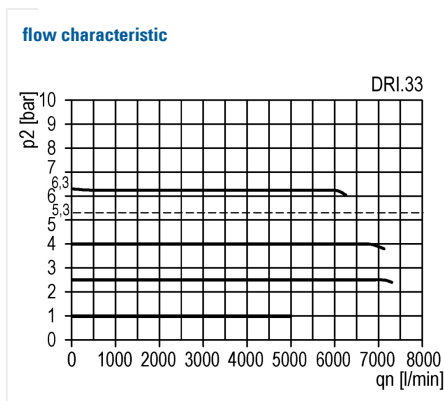


## Pressure-regulator of the Standard series

Feedback regulator G1/4 0,5-16



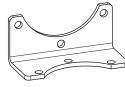
type	part-number	series	port size	flow rate	adjustment range P2 max.	weight
DRF.31 fb	9.6231.00.500.2V	Standard	G 1/4	6500 l/min	16 bar	0.925 kg



#### technical data

- **description:** air line regulator with diaphragm for feedback systems (e.g. together with DRI.33 ... 88)
- **medium:** compressed air, neutral gases
- **supply pressure P1 max.:** 16 bar
- **temperature range:** -10°C - +60°C
- **air consumption:** 3 - 6 l/min

#### accessories



- mounting bracket: [BW.30](#)
- control panel mounting: nut DR.11-7