

Pressure regulator pneumatic pilot operated BG3

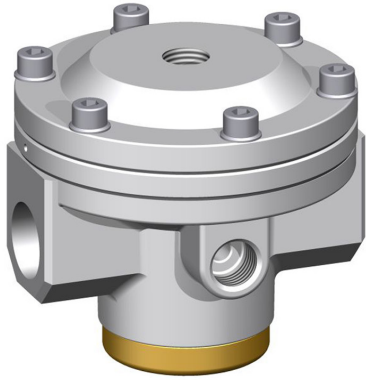


Image shows:
9.1533.00.100.0V

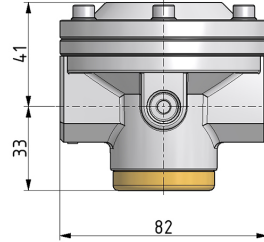
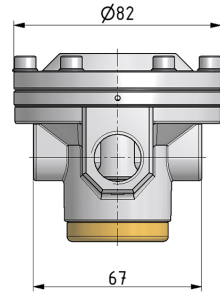


Image shows:
9.1533.00.100.0V



Service 3 unit

Service 2 unit

Filter regulator

Filter

Pressure regulator

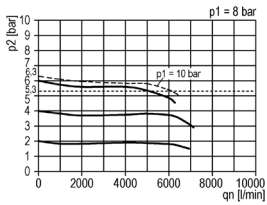
Lubricator

System extensions

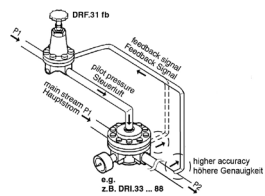
Accessories

Special products

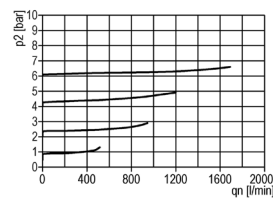
flow characteristic



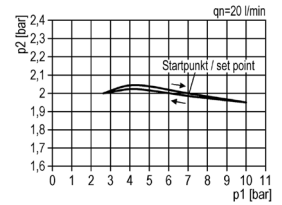
operating conditions



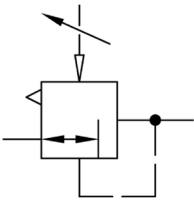
exhaust characteristics



pressure characteristic



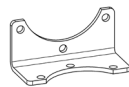
symbol



technical data

description: air line regulator with diaphragm and relieving feature, pneumatic pilot-operated (1:1)
medium: compressed air, neutral gases
supply pressure P1 max.: 25 bar
temperature range: -10°C - +80°C

accessories



mounting bracket: [BW.30](#)

type

DRI.33

part-number

9.1533.00.100.0V

description

Pressure regulator G1/2 pneumatic pilot operated (G1/4)