

# Pressure regulator pneumatic pilot operated BG7

Service 3 unit

Service 2 unit

Filter regulator

Filter

Pressure regulator

Lubricator

System extensions

Accessories

Special products

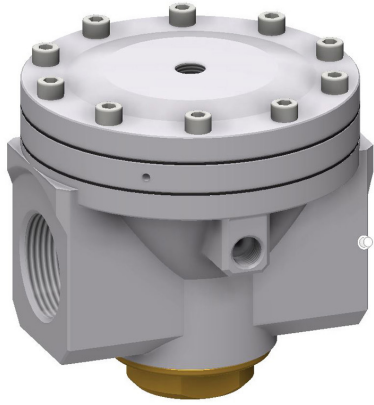


Image shows:  
9.1576.00.100.0

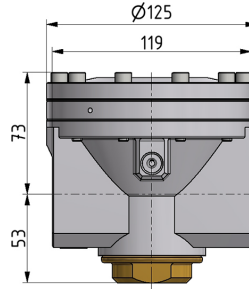
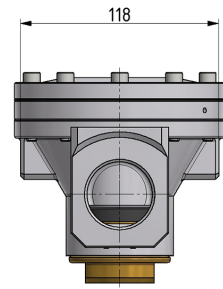
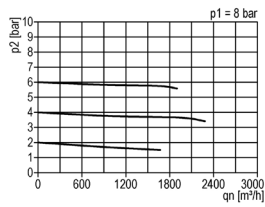


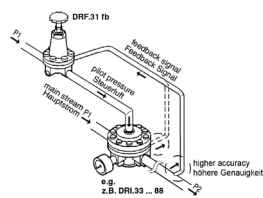
Image shows:  
9.1576.00.100.0



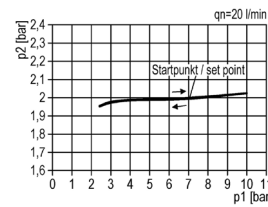
### flow characteristic



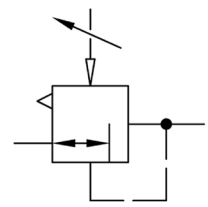
### operating conditions



### pressure characteristic



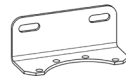
### symbol



### technical data

**description:** air line regulator with diaphragm and relieving feature, pneumatic pilot-operated (1:1)  
**medium:** compressed air, neutral gases  
**supply pressure P1 max.:** 25 bar  
**temperature range:** -10°C - +80°C

### accessories



mounting bracket: [BW.50](#)

type	part-number	description
DRI.76	9.1576.00.100.0	Pressure regulator G1 1/4 pneumatic pilot operated (G1/4)
DRI.77	9.1577.00.100.0V	Pressure regulator G1 1/2 pneumatic pilot operated (G1/4)