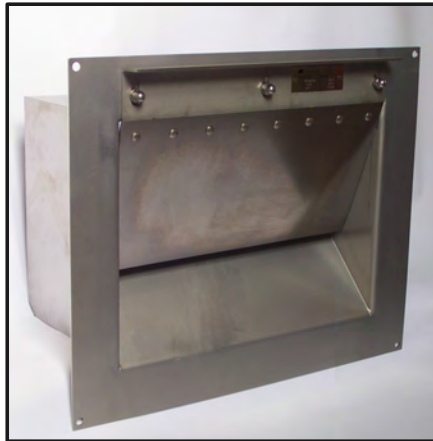


## Hydrovex® Clari Regulated Outlet Slot

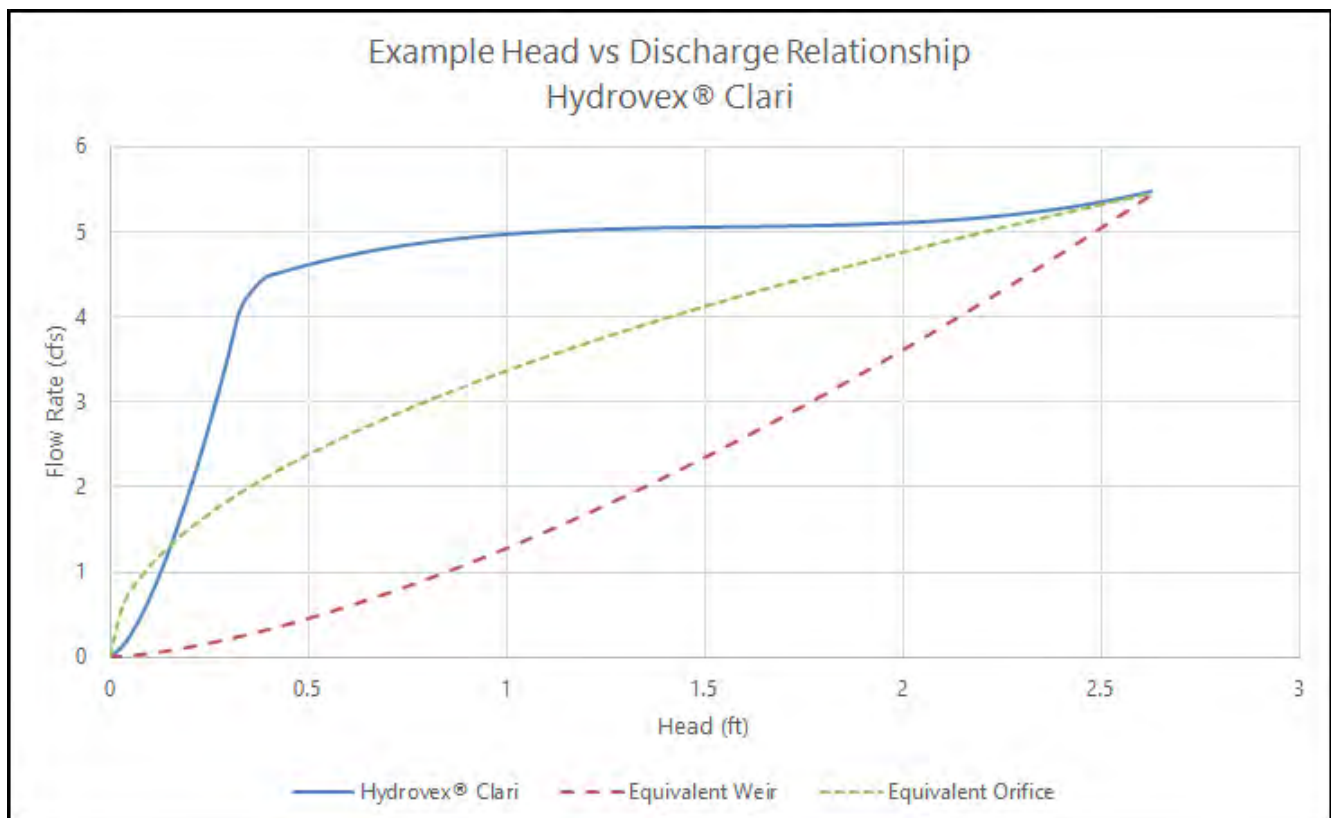


Upstream View



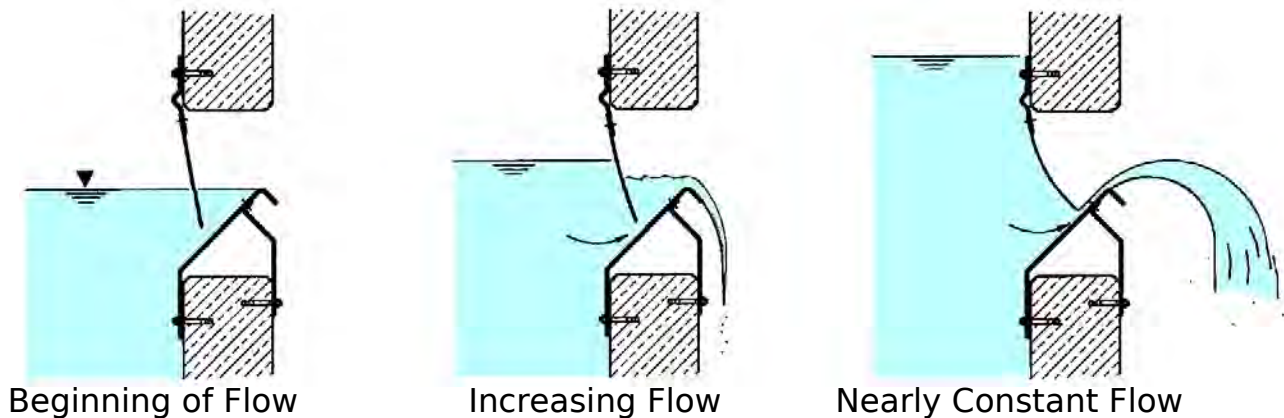
Downstream View

The Hydrovex® Clari Regulated Outlet Slot produces nearly constant flow as upstream water levels rise and fall. It works solely on water pressure and has no mechanically engaged parts. Its pre-stressed, 304 stainless steel bending sheet is positioned above an angled 304 stainless steel weir plate and forms a slot through which water is discharged. As upstream water levels rise, the Hydrovex® Clari's bending sheet deflects and reduces the area of the slot and maintains the discharge at a nearly constant rate.



Sample rating curve not to be used for design purposes. Contact 2gH Solutions LLC for a custom configured rating curve tailored to meet your specific project needs.

## Hydrovex® Clari Regulated Outlet Slot



- Functions as an underflow baffle and skims floating trash and debris from the discharge.
- Bending sheet and weir plate are completely self-contained in a flush mounted 304 stainless steel frame for fast and easy installation in structures and bulkheads.
- Custom fabricated to meet your specific project requirements and features flow rates from 0.3 cfs to 10.5 cfs per unit.

The Hydrovex® Clari is an ideal and economical solution for the following design problems:

- Minimization of volume required for shallow to moderate depth detention storage systems such as open ponds, arch chamber systems, pipe storage systems and infiltration/exfiltration trench systems.
- Flow Splitting
- Flow Throttling