

	UNITS WITH 5/8" TRIM		UNITS WITH 1-1/2" TRIM	
	2X2	2X4	2X2	2X4
TRIM LENGTH (TL)	23-5/8"	47-5/8"	25-3/8"	49-3/8"
TRIM WIDTH (TW)	23-5/8"	23-5/8"	25-3/8"	25-3/8"
BODY LENGTH (BL)	22-5/8"	46-5/8"	22-5/8"	46-5/8"
BODY WIDTH (BW)	22-5/8"	22-5/8"	22-5/8"	22-5/8"

ORDER DETAILS	
ITEM#	QTY. REQ.
1	
2	
3	
<i>EX.</i>	4

STANDARD OPTIONS

(CHECK IF APPLICABLE)

MATERIAL

- .063" ALUMINUM
- T-304L STAINLESS
- T-316L STAINLESS

FILTER SIZE (FLUID SEAL)

- 2 X 2 (FILTER DIM. 21- 5/8" X 19-7/8" OD)
- 2 X 4 (FILTER DIM. 21- 5/8" X 43-7/8" OD)

DEPTH

- 9" (2" MEDIA PACK)
- 12" (2" OR 4" MEDIA PACK)
- 14" (2", 4" OR 6" MEDIA PACK)

INSULATION

- NONE
- 2" FOIL BACKED
 - TOP ONLY
 - TOP AND SIDES

DAMPER / INLET SIZE

- 8" 12"
- 10" 14"

HANGING TABS

- YES

AEROSOL INJECTION PIPE (DOP)

- NOT REQUIRED
- REQUIRED

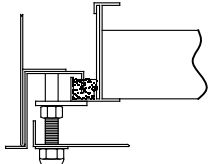
PLUG TYPE:

- ZINC (STD.) BRASS QUICK DISCONNECT

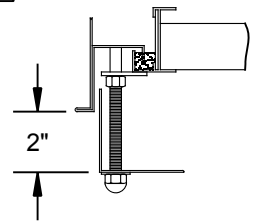
CONFIGURATION	DEPTH 'D'
2" MEDIA PACK	9"
2" OR 4" MEDIA PACK	12"
2", 4", OR 6" MEDIA PACK	14"

FACE GUARD / GRILLE OPTIONS

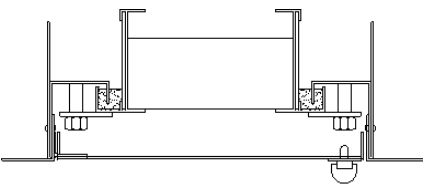
- FLUSH WITH 4 ACORN NUTS



- 2" EXTENDED WITH 4 ACORN NUTS



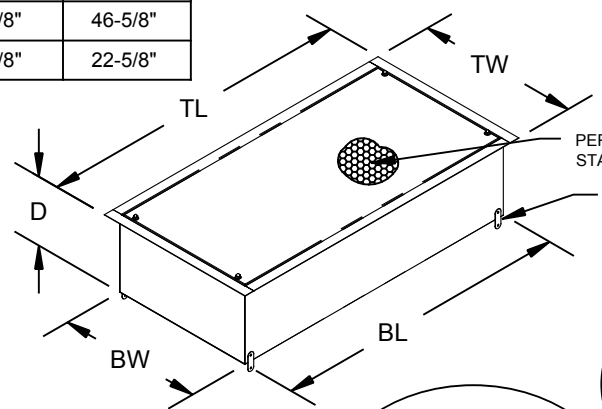
- FLUSH LIFT-OFF HINGES WITH 1/4-TURN FASTENERS



STANDARD SPECS:

THE HOOD BODY SHALL BE SEAL WELDED AND CAULKED. THE INLET SHALL BE INTERMITTENTLY WELDED AND CAULKED. THE FINAL ASSEMBLY SHALL BE TESTED PER INTERNAL MANUFACTURER PROCEDURE PGM-502 TYPICAL, ASSURING THE UNIT ASSEMBLY TO BE FREE OF ANY LEAKS. FILTER FIT SHALL BE CHECKED BEFORE THE UNIT LEAVES THE FACTORY.

CUSTOMER INFORMATION

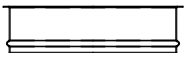


PERFORATED 40% OPEN STAINLESS STEEL MATERIAL.

FOUR (4) HANGING TABS IF OPTION IS REQUIRED.

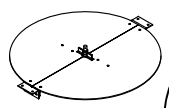
INLET TYPE

- RIBBED



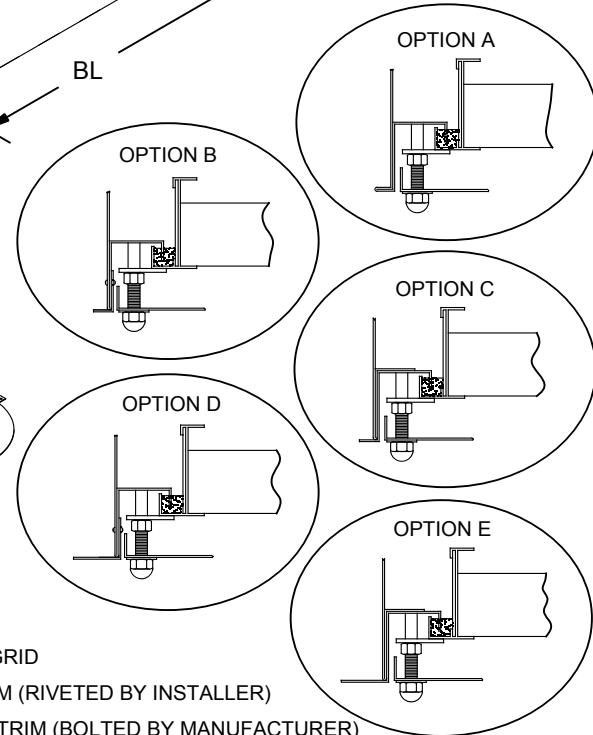
DAMPER STYLE

- BUTTERFLY
 - STANDARD (ALUMINUM)
 - HEAVY DUTY (STAINLESS)
- GUILLOTINE
- LPD DIFFUSER



TRIM OPTIONS

- (OPTION A) 5/8" TRIM FOR T-BAR GRID
- (OPTION B) 5/8" REMOVEABLE TRIM (RIVETED BY INSTALLER)
- (OPTION C) 5/8" PERMANENT SST TRIM (BOLTED BY MANUFACTURER)
- (OPTION D) 1 1/2" REMOVEABLE TRIM (RIVETED BY INSTALLER)
- (OPTION E) 1 1/2" PERMANENT SST TRIM (BOLTED BY MANUFACTURER)



IF YOU DO NOT SEE THE OPTIONS YOU REQUIRE, THE MANUFACTURER CAN CUSTOM DESIGN YOUR HOOD TO NEARLY ANY SIZE AND SPECIFICATION.

REV.	DRAWN BY DATE	DESCRIPTION:	APPR. BY DATE
		UNLESS OTHERWISE SPECIFIED • ALL DIMENSIONS ARE IN INCHES • TOLERANCES ARE: FRACTION: ±1/8" DECIMAL: ±.125" ANGULAR: ±1°	

RTM

P&G MANUFACTURING

WASHINGTON N.C. 27889
PHONE NO.: 252-946-9110 **P&G MFG**
FAX NO.: 252-946-4823

SALES DRAWING

DRAWN BY:	DATE:	DWG SCALE:			
WMA	5/11/10	NTS			
APPROVED BY:	DATE:	DRAWING NO.:	SHEET	OF	REV.
JWW	6/29/10	CSD-010	1	1	B

UNITS SCALE: 2" = 1" TEXT HEIGHT: