

One Octave Scale Study

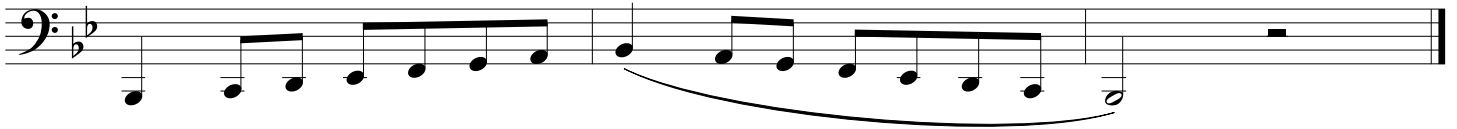
Tuba

Concert B Flat

How many flats are in the key signature?

List the flats in the order they appear in the key signature.

Write in the note names (including flats/sharps) above or below the notes.

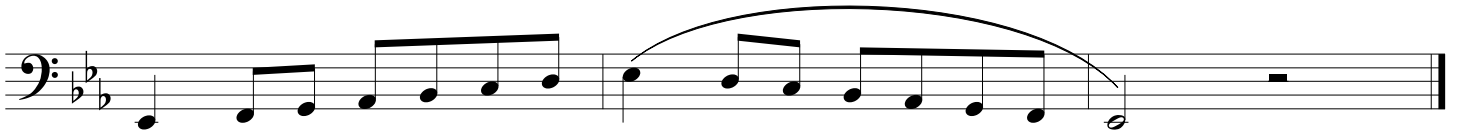


Concert E Flat

How many flats are in the key signature?

List the flats in the order they appear in the key signature.

Write in the note names (including flats/sharps) above or below the notes.

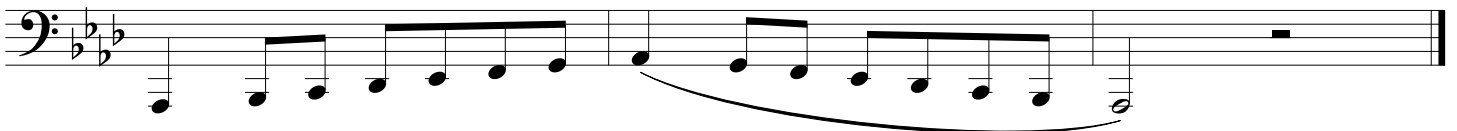


Concert A Flat

How many flats are in the key signature?

List the flats in the order they appear in the key signature.

Write in the note names (including flats/sharps) above or below the notes.



Tuba

Concert D Flat

How many flats are in the key signature?

List the flats in the order they appear in the key signature.

Write in the note names (including flats/sharps) above or below the notes.

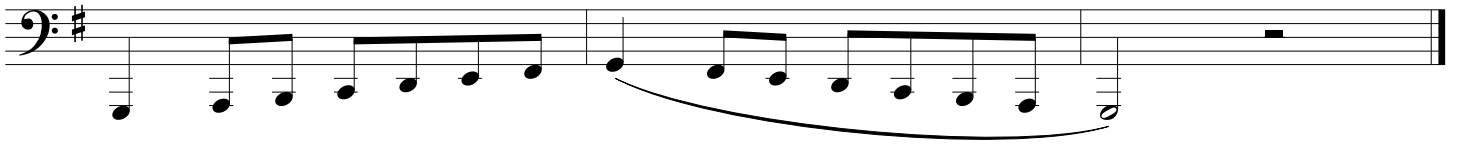


Concert G

How many sharps are in the key signature?

List the sharps in the order they appear in the key signature.

Write in the note names (including flats/sharps) above or below the notes.



Chromatic Scale

A "sharp" raises the pitch of a note and a "flat" lowers the pitch of a note. When you see a chromatic scale ascending, it will be written using sharps. When you see a chromatic scale descending, it will be written using flats. It is important that you are comfortable recognizing both sharp and flat notes.

Write in the note names (including flats/sharps) above or below the notes.

