



Fulshear High School Band

9302 Charger Way

Fulshear, TX 77441

832.223.5107

Final Six Weeks Assessment & Audition

Our final six weeks are the most action-packed time of year for our program and in a lot of ways the most fun! We are the best we have been all year and we have worked hard for it. Our last weeks together are also the perfect time for us to take note of all our musicians have learned so that we may build upon each person's education, musicianship, and contribution to this wonderful band program for next year.

For the 2018-2019 school year, our program will feature two performing and competitive ensembles, Wind Ensemble & Symphonic Winds, and possibly a third ensemble, Concert Band. Placement in each band will be based on the following criteria:

- Instrumentation consideration: Sections will be limited to standards suggested by UIL.
- Behavior, attitude and attendance.
- Dependability: SmartMusic(HS), practice cards, performances, preparation of assignments.
- Grades in band and all other subjects.
- Preparation and performance of all assessment & audition materials.

Assessment & Audition Material

1. ATSSB Audition Scales (4 scale minimum)

- Students will play as many scales as they can from the ATSSB Scales during the audition. Extra credit will be given if the scale is played two octaves when possible and/or if memorized.

2. ATSSB Chromatic Scale (one octave minimum)

- Students will perform their ATSSB chromatic scale at the time of their audition which is scheduled to take place starting the week of May 21st. Extra credit will be given if the chromatic scale played is a wider range than one octave and/or if memorized.

3. Etude/Fight Song (Fight Song Minimum)

- Students will perform the Fight Song as well as a portion of the audition etude at the time of their audition which is scheduled to take place starting the week of May 21st. All students must perform the Fight Song and students attempting to make the Wind Ensemble (Varsity Group) should prepare the etude excerpt as well.

We are thrilled to spend some precious individual time with each of our musicians. Thank you for all you have done and continue to do to participate in our band program. We are very proud of our musicians!

Sincerely,
Andrew Lee
Andrew.Lee@lcisd.org

FLUTE 2018-2019 AUDITIONS

All students must prepare as many scales as possible. Extra credit will be rewarded for full range/speed. Students will also perform the ATSSB chromatic scale with extra credit given for full range/speed.

FLUTE FIGHT SONG (required)

$\text{♩} = 160$

f *mf* *sp* *sf*

To Coda

Coda

mf

FLUTE AUDITION ETUDE (recommended/encouraged)

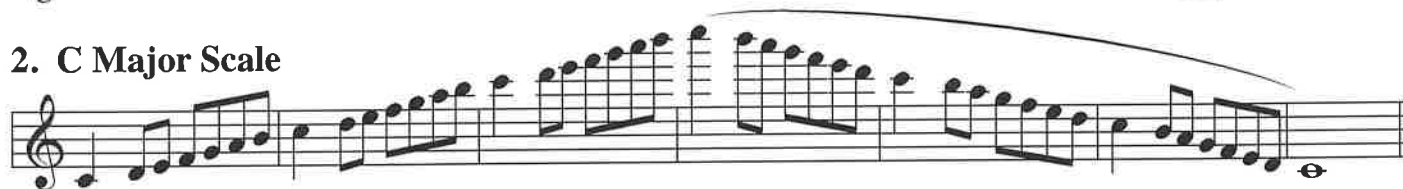
ATSSB Flute Scales

Scales should be performed as written and may or may not be performed connected. All scales are to be played at a minimum of $\text{♩} = 120$

1. G Major Scale



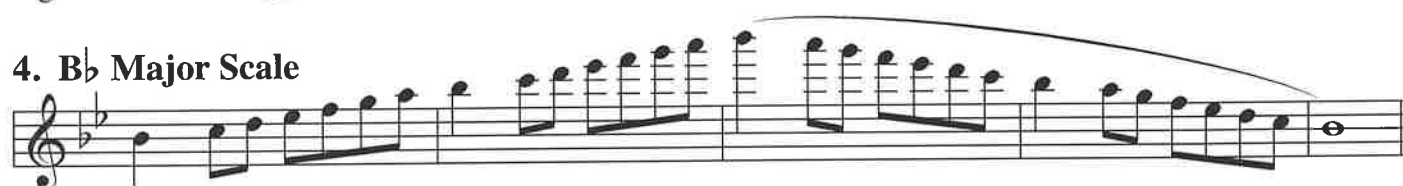
2. C Major Scale



3. F Major Scale



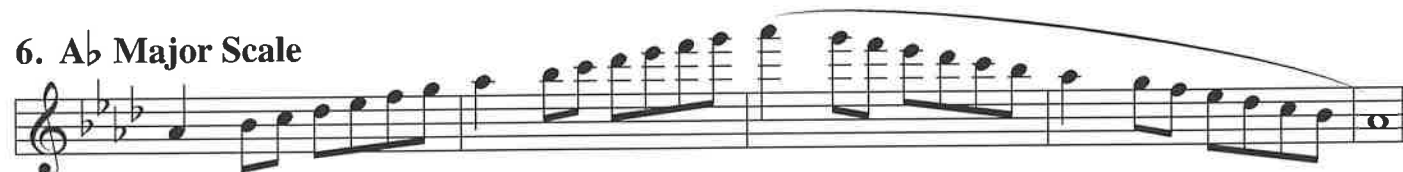
4. B \flat Major Scale



5. E \flat Major Scale



6. A \flat Major Scale



7. D \flat Major Scale



8. Chromatic Scale

