

Rancho Park Clubhouse Construction Advanced

Action Paves Way for Developing One of Nation's Top Municipal Golf Courses

Development of Rancho Park on Pico Blvd. between Motor Ave. and Patricia St. into one of the city's finest golf, sports and recreation areas has moved forward another wide step with approval by the City Recreation and Park Commission of plans and specifications for a modern clubhouse to complete the golf facilities in the park.

Bids for construction of the building are being requested with Oct. 21 set as the last date for bids to be returned.

Designed by Architect George M. Lindsey, the Rancho golf clubhouse will be an attractive and useful addition to the park. It will contain a lounge, coffee shop and dining room, dressing rooms, lockers, showers, golf shop, starter's and manager's offices and other facilities.

Outstanding Course

Of contemporary architecture, the long, low building will be located at the northwest corner of the park at Pico Blvd. and Patricia St.

The entire golf development at Rancho Park will make the area one of the most outstanding municipal courses in the nation, according to Maurie Luxford, president of the Los Angeles City Recreation and Park Commission. Billy Bell, golf architect, and George Von Elm, former national amateur golf champion, have given expert advice and guidance in the construction of the course.

Ready Next Summer

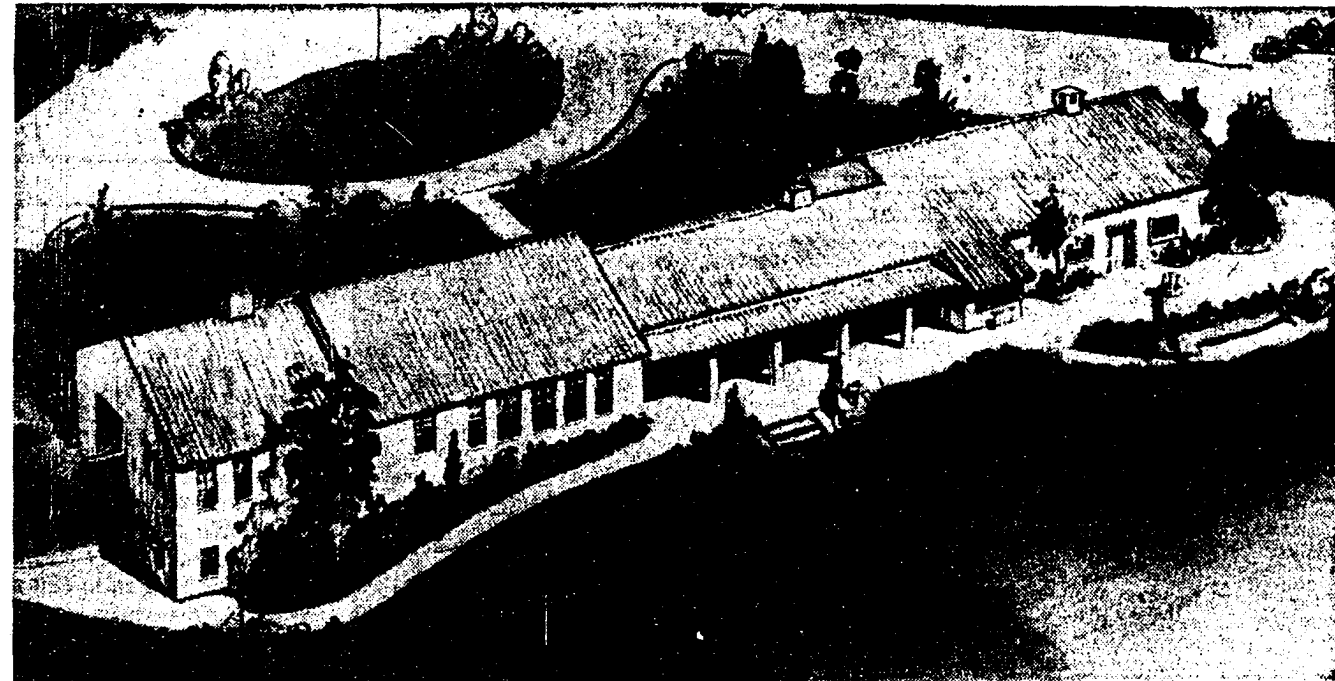
The championship 18-hole course is now completely seeded and landscaped and when the clubhouse is completed the course should be ready for play by next summer. A 9-hole pitch and putt course at Rancho Park was opened recently and already has won great popularity.

However, golf will not be the sole recreational activity at Rancho Park, for the big 184-acre area is to receive comprehensive development that will provide many park and recreation facilities.

Pool to Be Built

Under design by Architect Dwight Gibbs is a modern swimming pool, bathhouse and community clubhouse to be built on

Turn to Page 2, Column 2



FOR NEW GOLF COURSE—Architect's sketch of clubhouse to be built at the city's new Rancho Park golf

course on Pico Blvd., between Motor Ave. and Patricia St. Building will be located at the park's northwest corner.

NEW CLUBHOUSE

Continued from First Page
the east side of the park along Motor Ave.

Children's playgrounds, athletic field, a battery of tennis courts, picnic grounds and other facilities also will be installed on that side of the park.

Surplus revenues from the Griffith Park golf courses not only paid for acquiring the entire 184-acre Rancho site but also are paying for installation of the new golf courses and the golf

clubhouse, without having to use tax funds.

The swimming pool, community buildings, tennis courts, playgrounds and other general recreation facilities at Rancho are being financed, however, out of the city's playground bond fund voted by the citizens for that purpose last year.

Reproduced with permission of the copyright owner. Further reproduction prohibited without permission.