

Sport

# NEW COUNTRY CLUB PLANNED.

## CULVER CITY TO HAVE FINE GOLF COURSE.

Association Takes a Long-term Lease on Hill Lands—Expects to Start Attractive Structure of Rustic Type in Near Future. Architect Employed.

The Culver City Country Club, an organization perfected during the past week, has leased 105 acres of land in the rolling hills just north of Culver City and plans to at once build a clubhouse and lay out a golf course. At an outdoor luncheon held at the club grounds last Wednesday the following officers were elected: George W. Somerville, president; Harry H. Culver, vice-president; H. W. McNutt, secretary, and E. H. Allon, treasurer. The directors are John D. Carsen, J. F. Haight, H. W. McNutt, George W. Somerville, Harry H. Culver, E. H. Allon and Charles R. Stuart.

The club has obtained a twenty-year lease of the property secured, and the laying out of the projected links is already under way. Plans for the clubhouse, which will stand upon a high knoll commanding a sweeping vista of the city, the valley and the ocean, are now being drawn by A. S. Helneman.

The building will be of semi-rustic type and will be completely equipped for the convenience of golfers and tennis players. A special feature of the club layout will be a fully-equipped children's playground near the clubhouse.

The membership of the club, it is announced, will be limited to 500 regular members. A limited number of persons residing outside of Los Angeles county will be accepted as nonresident members.

### UNIQUE FEATURE.

Model Bungalow Complete in Every Detail to be Exhibited.

An interesting plan for the advertising of real estate has been worked out by the Kleinberger & Edwards Company in connection with its Walnut Park subdivision adjoining southeast Los Angeles. The company will in the near future open for exhibition a model bungalow home occupying large grounds on the Long Beach boulevard front of the tract.

The bungalow is in the colonial style and has been carefully planned as to design, arrangement and setting. The interior is being completely furnished by the firm of Peck & Hills. The Germain Seed Company is laying out the grounds.

### ADD TO TRACT.

Plans for the opening of a new annex of acre and half-acre suburban homesites at New Ramona Acres were revealed in the letting of a contract during the past week by the Janss Investment Company for the grading of a large acreage paralleling the electric car tracks at Wilmar station. Contracts were also placed for the oiling and graveling of extensions of Columbia street, Del Mar avenue, Hellman avenue and Jackson avenue from New Ramona Acres through the new tract.

### MARIPOSA HOME SOLD.

Large Residence in Wilmar District Bought by Los Angeles Attorney. J. H. Adams, manager of the house and a department of the Wright-Cullender Law Company, reports the following sales: For Willis H. Steale to William J. Hunsaker, residence at No. 417 South Mariposa avenue, \$28,500; for John L. Plummer to Henry C. Harris, block between Second and Third streets on the west side of Norton avenue, \$30,000; Sarah A. Beano to Fred L. Fallas, northeast corner Orange street and Third avenue, \$15,000; for W. E. O'Brien to Mildred E. Mudd, No. 2427 Fourth avenue, \$20,000. W. T. S. Hammond to A. B. McGaffey, house at No. 530 Shatto place \$35,000; for Ben L. Gubser to E. A. Robbins, house at No. 219 South St. Andrews place, \$6500; for Harry W. Wilson to Alice J. Harrison, two flat buildings at Nos. 1433 and 1437 South Vermont avenue, \$12,500.

### INCOME BUILDINGS.

Apartments for Hollywood—Several Flat Projects Now Taking Shape.

An apartment-house of forty rooms will be started this week by H. R. Taylor, Jr., at the corner of Hobart boulevard and De Longpre avenue in Hollywood. The building will be divided into eight five-room apartments. It was planned and is to be built by Taylor Bros. Its cost is given at \$20,000.

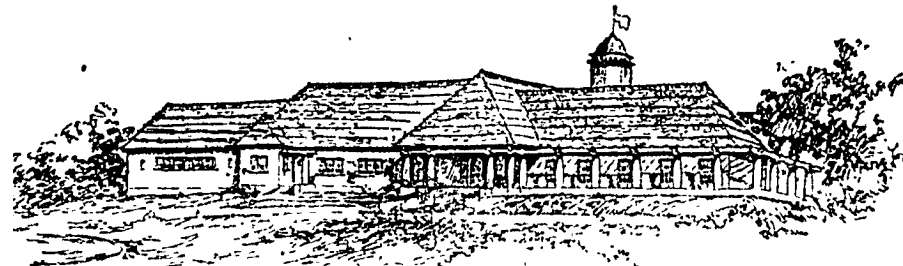
The contract was let during the past week for a twenty-room flat to be erected by Grace C. Longley on Eleventh street, between Grand View and Hoover. Work will be started in a few days on a twenty-room flat for R. F. Bowden at No. 2935 Leeward avenue. R. Ohlf has had plans drawn for a twenty-room flat to be built on Catalina street between Eighth and Ninth. Rachel Gitelson is about to start a sixteen-room flat at Nos. 829 to 833 West Fortieth street. E. F. Fortner will build a sixteen-room flat at No. 1928 Cahuenga avenue.

### FLATS EXCHANGED.

The R. C. Mitchell Company reports the sale of a five-flat building on Hobart boulevard near Wilshire boulevard for J. A. Rogers, a well-known builder, to a local investor. The consideration is given at \$35,000. Mr. Rogers accepting as part payment a tract of land in the San Joaquin Valley, the balance being adjusted by cash and mortgage. The building occupies a site 60x150 feet in size and is divided into four apartments of six rooms each. D. C. Mitchell represented both buyer and seller.

### NEW RAMONA ACRES.

The Janss Investment Company reports the following sales in its New Ramona Acres tract in the San Gabriel Valley: To I. F. Thoms, large lot, \$1400; to T. H. Lutz, acre, \$1650; to E. F. Lesley, acre, \$1300; to E. G. Beswick, acre, \$1450; to H. J. Suttle, lot, \$700; to Catherine Granville, acre, \$1500; to F. E. Leech, one and one-half acres, \$1700; to L. O. Golden, lot, \$675; to F. L. Monson, acre, partly improved, \$1450, to J. J. Gibbons, acre, \$700; to I. N. Lucas, acre, to be improved with house, \$1300; to A. N. Greer, lot, to be improved with four-room bungalow, \$1300, and to C. Zeeder, lot with four-room bungalow, \$1300.



Sketch for Culver City Country Club.