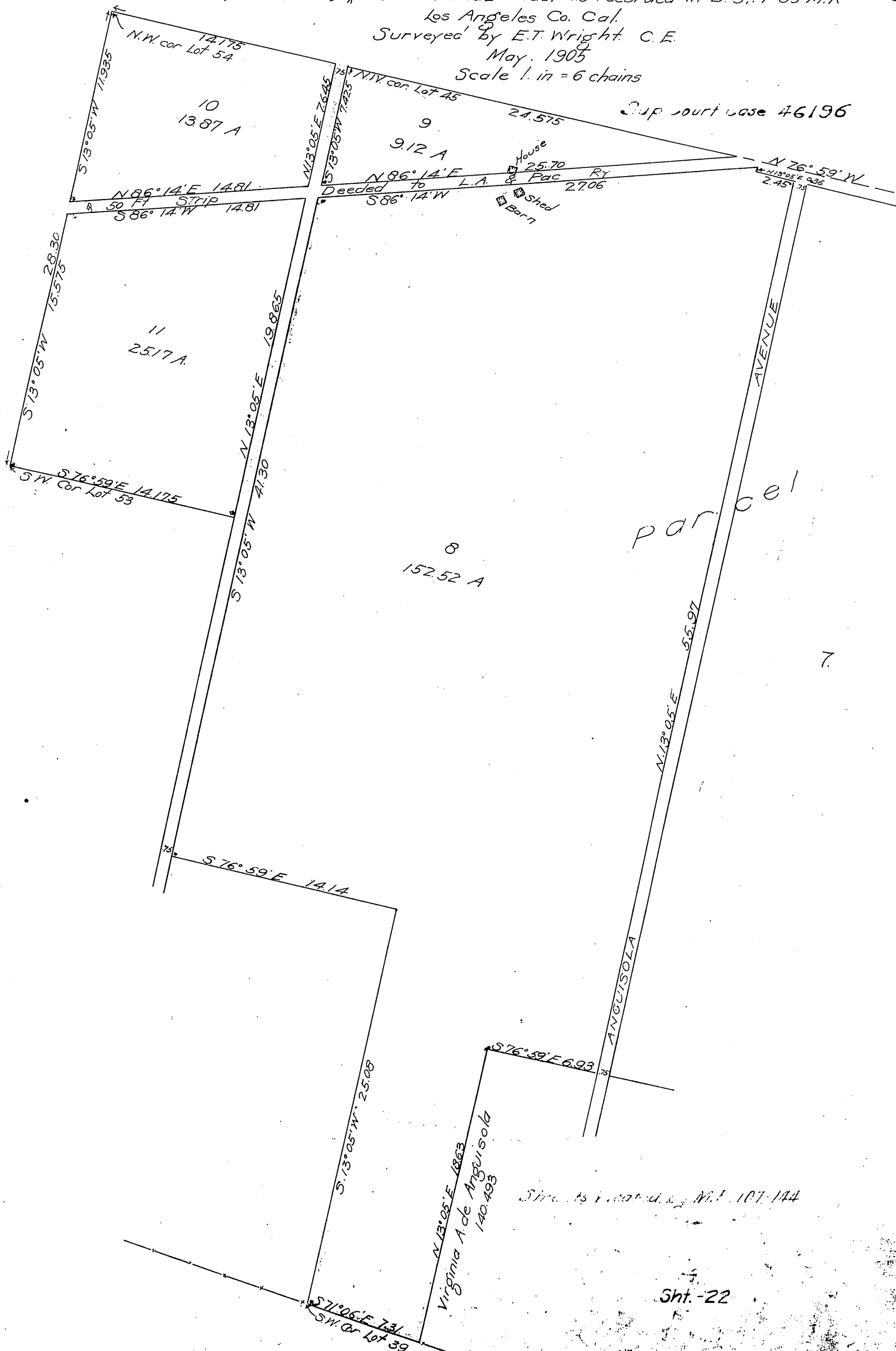


Maria C de Arnaiz Plaintiff }
-vs- } Final decree in Partition
Louis G Olivaris et al Defendant }

15

Map of the
ARNAIZ PROPERTY
in Rancho Rincon De Los Bueyes. Being Lots 6, 7, 10, 11, 12, 13, 14, 15, 19, 20, 23,
30, 31, 34, 35, 41, 42, 43, 46, 47, 53, and Fractional Lots 1, 2, 3, 4, 5, 8, 9, 16, 17, 21, 22, 24, 32, 33,
36, 40, 44, 45, 48, 54 of ^{sub of} Jose de Arnaiz Tract as recorded in B. 37. P 53 M.R
Los Angeles Co. Cal.
Surveyed by E.T. Wright. C.E.
May. 1905
Scale 1. in = 6 chains

Sup Court Case 46196



parcel

Streets created by W.P. 107-144

Sht. -22