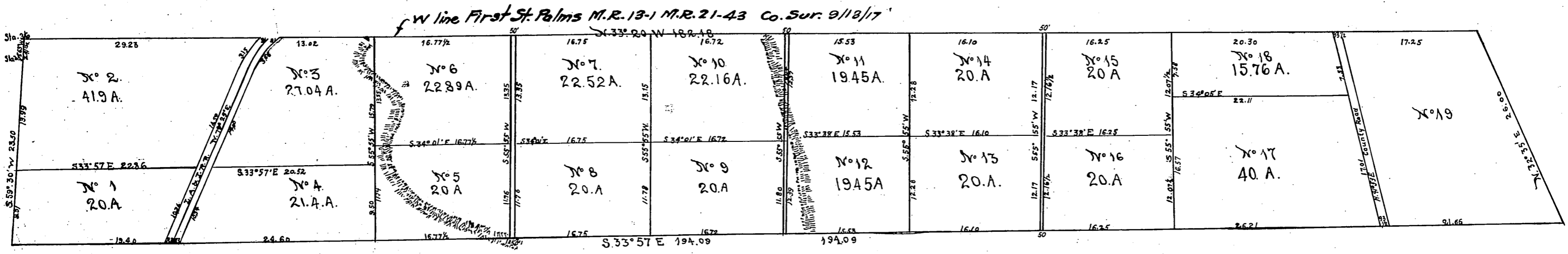


Comp. J. D. Y.

MAP OF A SURVEY  
OF THE  
**JOHN D. YOUNG**  
TRACT

Being a part of the Rancho Ballona, in that portion set off to Anderson Base and Elender Young in the partition of said Rancho in the Seventeenth District Court Los Angeles County, wherein John D. Young et al. were plaintiffs and A. Machado et al. were defendants. ~ Said survey being made in November 1875.

E.T. WRIGHT, SURVEYOR.



Recorded Nov. 10. A. D. 1875 at 5 P.M. by request of John D. Young.  
J. W. Gillette, County Recorder.

Note: Lot distances & street widths on this Map  
are all given in chains & links

- For Lots 1 & 2 For Pico Blvd D: 6348-288 D: 20-245.
- Pico Blvd. in L.A. City named - Ord. 36986
- Electric Av. changed to Venice Blvd. D: 13-171 R. B. 25-373
- For lot 17 for Washington Blvd. D: 39-43 O.R. 3048-79
- For " 17 " " " " " D: 39-74 O.R. 3027-171
- For " 17 " " " " " D: 44-12 O.R. 3880-52

Co. Sur. 8-3-1918