



# Map

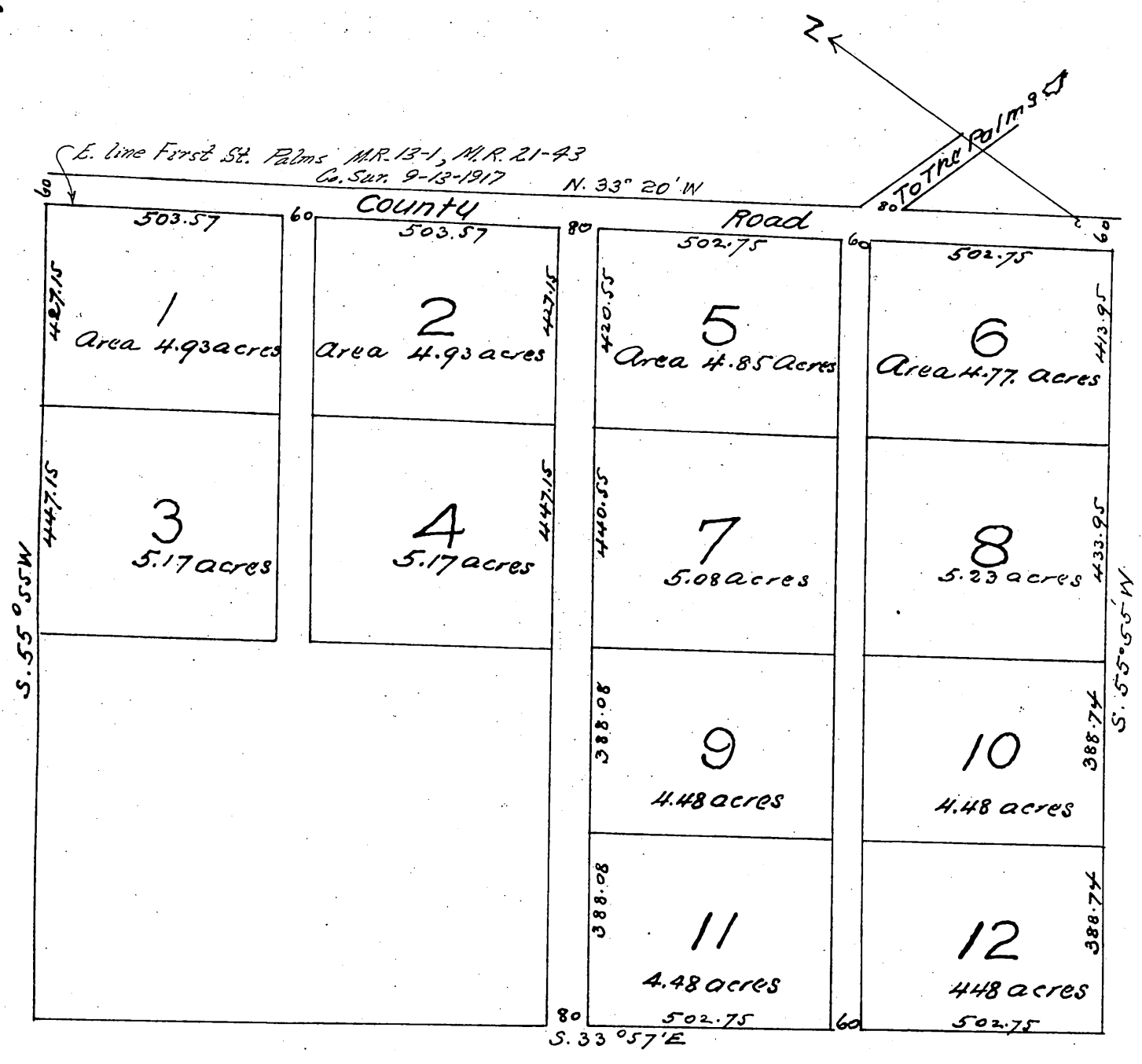
OFA SUBDIVISION OF LOTS 6, 7, 8

of the

## John D. Young Tract

As recorded in Book 3 Page 115 Miscellaneous Records

Scale 200 ft = one in.



A full true and correct copy of the original (reduced to the scale of 300 ft to an inch) recorded March 24<sup>th</sup> 1888 at 1:53 P.M. at request of Mrs E. Young

Frank A. Libson County Recorder  
by Wm E. Johnston Deputy