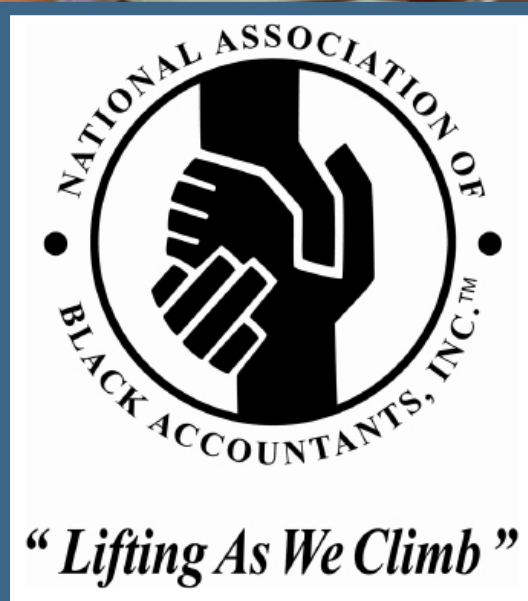


Detroit Chapter Corporate Participation Prospectus



National Association of
Black Accountants, Inc.
Detroit Chapter

P.O. Box 32883
Detroit, MI 48232
www.nabadetroit.org

"Developing Leaders and Redefining Success"

Dear Corporate Partner,

On behalf of the NABA Detroit Chapter, I would like to thank you for your continued support.

For forty seven years, the National Association of Black Accountants, Inc. (NABA) has been a pioneer in developing minority talent seeking a career in accounting and finance. Today, the NABA Detroit Professional Chapter represents minority professionals consisting of CPAs, CISAs, MBAs, attorneys, financial advisors and a number of other finance professionals in both public and private practice.

This year, we will provide to our members and our community by:

- Recognizing 10 college students who have demonstrated excellence in their academic studies through Scholarship
- Hosting 30 high school students for a 1 week at Wayne State through our Accounting Career Awareness Program
- Preparing our Student Chapters to attend the Central Region Student Conference
- Providing Continuing Professional Educational (CPE) and Professional Development opportunities through our Leadership & Empowerment Conference, Financial Literacy and other development programs • Mentoring Students and Professional Members
- Fulfilling civic responsibilities through community service initiatives

In order for us to achieve our mutual goals and objectives, we ask for your support in making the dreams of tomorrow's leaders a reality.

Partnering with NABA Detroit provides the following value-added benefits:

- Targeted recruiting efforts that promote your company's diversity and inclusion initiatives and enhance your Company's brand recognition as a diverse employer;
- Opportunities to connect to hundreds of potential candidates from ethnically diverse backgrounds;
- Participation and sponsorship opportunities at dynamic technical sessions that develop core competencies;
- Increased minority retention through enhanced leadership and professional development opportunities for your employees that join NABA; and
- Exposure of your goods and services to our membership which represents an informed, affluent consumer base.

A partnership with NABA is a worthwhile investment that will pay dividends for decades to come.

We look forward to hearing from you.

Sincerely,

Latina S. Fauconier

Latina S. Fauconier, CPA
NABA Detroit Chapter President
president@nabadetroit.org



Table of Contents

NABA Overview	3
Programs, Events & Conferences	4
Detroit Chapter Demographics	5
Corporate Participation Levels	6
Corporate Participation Form	7
Calendar of Events	8

NABA Overview and History

The National Association of Black Accountants, Inc. (NABA) is a nationwide membership organization with the primary purpose of developing, encouraging and serving as a resource for African-Americans and other ethnically diverse individuals in the accounting profession. NABA was founded in 1969 by nine African-American professionals in the New York area who were concerned with the limited participation of minorities in the accounting profession, particularly the number of Certified Public Accountants (CPAs). NABA's founders saw the need for a national organization that could deal forthrightly and effectively with the many common problems faced by the growing number of African-Americans and other minorities in the accounting profession.

NABA's motto, *Lifting As We Climb*, is exemplified best in our mission, which addresses the professional needs of our members as they serve as counselors and mentors to our students, developing and inspiring the leaders who will shape tomorrow's accounting and finance professions. In addition, NABA's Center for Advancement of Minority Accountants (CAMA) has established a series of career development programs that serve the membership at the national, regional and local levels. CAMA has also been instrumental in encouraging the next generation of young professionals to consider other opportunities in business.

NABA Missions and Goals

NABA is dedicated to uniting accountants and other business professionals, as well as accounting and business students, who are committed to professional and academic excellence. NABA provides effective programs, activities and advocacy, which promote our goals. They include:

1 Training and developing the professional skills of our members;

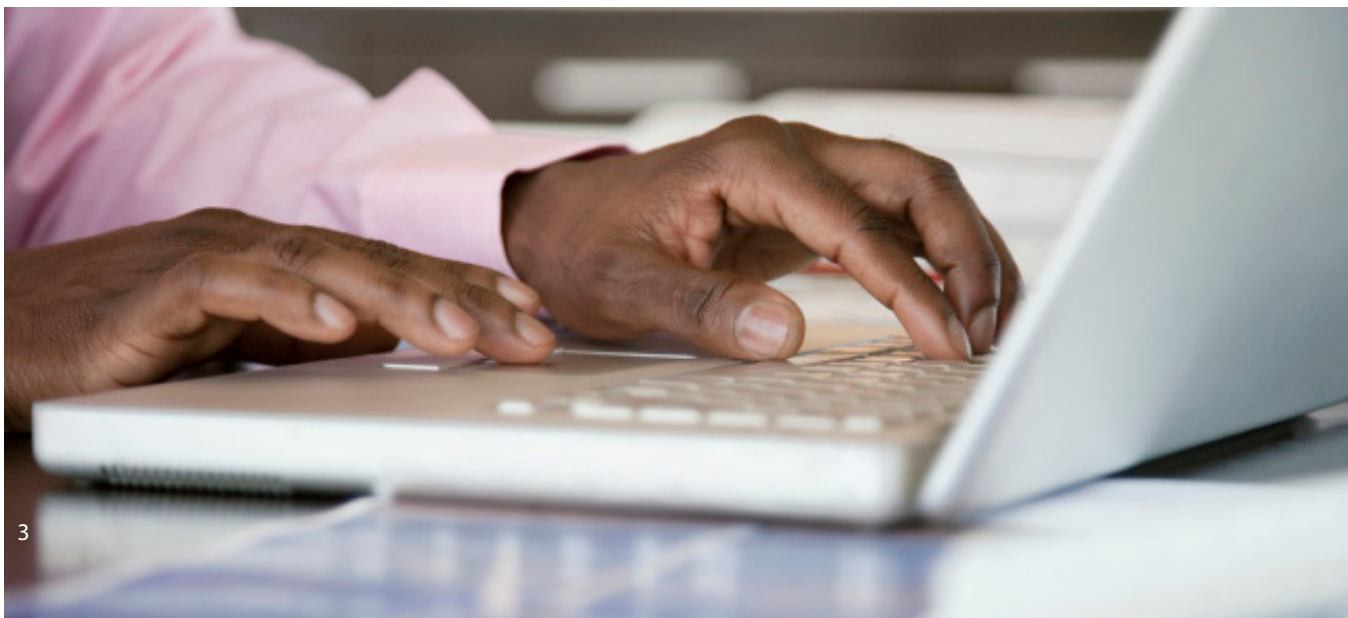
2 Encouraging and assisting African-American students to enter the accounting profession;

3 Representing the interests of current and prospective African-American accounting and business professionals;

4 Providing members with opportunities to fulfill their civic responsibilities;

5 Promoting public confidence in our members and the services they provide;

6 Ensuring long-term financial stability and providing adequate resources to implement chapter, regional and national programs.



Programs, Events & Conferences

Programs

General Body Meetings

Generally held every other month except during our busy season quiet period (February through March). During meetings, members and guests are updated on the activities of the chapter as well as a technical or professional development topic geared toward professional members. All general body meetings are open to members, prospective members, guests and corporate partners.

Networking and Social Events

Professional networking and social events hosted by NABA and sponsoring partners to encourage networking among professional members. We also partner with other professional affinity groups in the community to broaden the reach of our minority professional network and share the cost of events such as our annual holiday mixer and joint events.

Continuing Professional Education (CPE)

NABA Detroit provides members with educational events that are focused on various industry and accounting matters. The national organization is registered with the National Association of State Boards of Accountancy (NASBA) as a sponsor of CPE and is on the National Registry of CPE Sponsors.

Community Service

NABA Detroit hosts a variety community service events throughout the year from Life Remodeled in August, Forgotten Harvest/Gleaners and Adopt-a-Family programs for the holidays.

Spring Day/Fall Day with NABA

Spring Day is a 1/2 day workshop offerings for college students discussing the transition from college to career, best practices for running a NABA student chapter, and the importance of pursuing internship opportunities and building networks while in college. Fall Day provides a 1/2 day workshop for college students on interviewing, networking, resume writing, and preparation for the fall Central Region Student Conference.

Volunteer Income Tax Assistance ("VITA")

The VITA program is one of our community outreach initiatives. In 2016, our Chapter has re-partnered with the Accounting Aid Society and adopted a tax site to prepare tax returns for low income and elderly taxpayers.

Signature Events

Accounting Career Awareness Program ("ACAP")

ACAP® is presented annually by the Detroit Chapter to expose high school students to the expectations of college life as well as increase awareness of business and the accounting profession. This program provides a week long accounting camp for minority students throughout the state.

NABA Leadership & Empowerment Conference ("NL&EC")

The NABA Leadership & Empowerment Conference (NL&EC) is a multidisciplinary one-day seminar that provides participants with many of the critical business and leadership skills they need now and in the future.

Annual Scholarship & Awards Reception

At the annual reception we recognize members and corporate partners for their contribution to the organization and award our outstanding student members with scholarships. NABA is dedicated to helping our student members succeed in their educational endeavors.

Conferences

Annual National Convention

This conference and annual meeting of the membership provides a forum for joining NABA's membership with the corporate community, academicians, and other individuals interested in promoting the goals and objectives of NABA. Each year, this event allows professionals from around the world to network and participate in a powerful array of accounting, finance, tax and management technical sessions for all skill levels including the latest trends and issues affecting the profession.

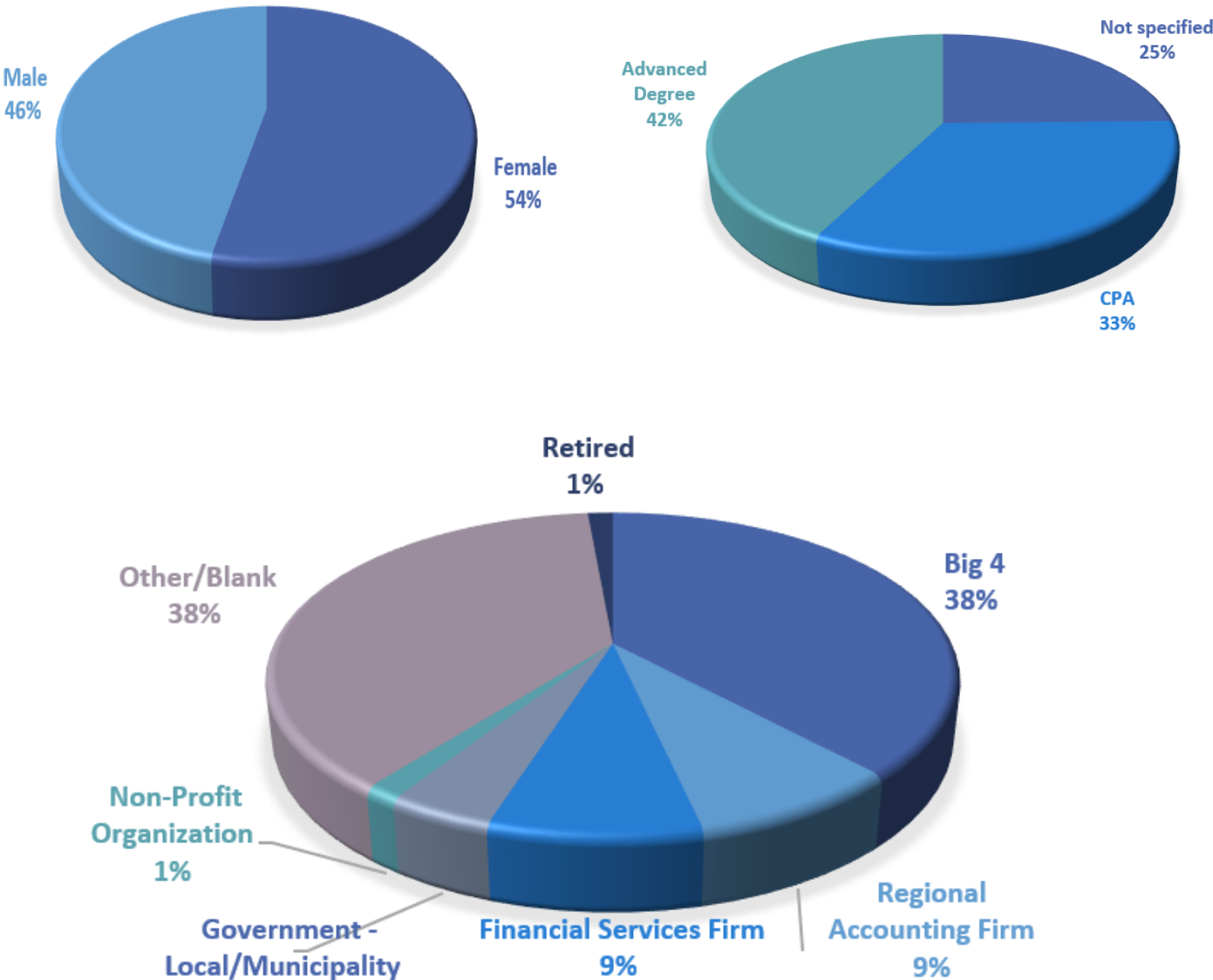
Central Region Student Conference

This conference provides NABA students with the opportunity to obtain cutting-edge information on industry trends, interview with employers from across the country and network with peers and professional NABA members. Students also participate in professional development and career readiness workshops.

NABA Demographics

Local Chapter Demograpgics

The diversity of NABA Detroit is one of the most valuable benefits to our members and corporate partners. Our professional membership is made up of men and women working in a variety of business fields across industries. Our membership consists of individuals with advanced degrees, professional certifications, and a wide spectrum of experience type and tenure



Corporate Participation Levels

CORPORATE PROGRAM BENEFITS	PLATINUM	GOLD	SILVER	Contributor
	\$5,000	\$4,000	\$2,500	\$1,500
Opportunity to host NABA General Body Meeting(s) and speak as a presenter during the meeting.	✓	✓	✓	✓
Company Logo advertised on NABA Detroit Website with link to company's website	✓	✓	✓	✓
Company Logo displayed on NABA Detroit email marketing campaigns including weekly newsletter with the ability to submit information to be included in the newsletter.	✓	✓	✓	✓
Post job opportunities to our distribution group. Job opportunities will be sent to our Members via our regularly scheduled email marketing campaign.	✓	✓	✓	
Opportunity to sponsor and network with professionals at signature events including ability to distribute approved marketing materials at signature events.	✓	✓	✓	
1 Corporate Scholarship given in your company's name at NABA Detroit Annual Scholarship & Awards Reception and 2 tickets to Reception.	✓	✓		
Annual Scholarship and Awards Reception Package (1 reserved table of 8 (includes scholarship recipient, Exhibit Table, Feature ad on NABA Detroit website & social media).	✓			

A LA CARTE SUPPORT OPTIONS	Sponsorship	Quantity	Total
ACAP:			
Financial Literacy Program	\$3,000		\$
Opening Reception	\$2,000		\$
Closing Reception	\$2,000		\$
Student Sponsorship: Sponsor a student to attend the weeklong program	\$750		\$
Closing Reception: 2 tickets to the ACAP closing reception, exhibit table and listing in closing reception program	\$500		\$
Corporate Hosting: Host a day of ACAP at your corporate office	\$750		\$
Daily Breakout Session (5)	\$500		\$
Scholarship: Sponsor to support student's continuing education	\$200		\$
Program Donation	\$		
Total ACAP:			\$
Scholarship and Awards Reception:			
Annual Scholarship and Awards Reception Package (1 Corporate Scholarship, 1 reserved table of 8 (includes scholarship recipient, Marketing Exhibit Table, Feature ad on NABA Detroit website & social media).	\$2,500		\$
1 Special Recognition Scholarship given in your company's name (includes 2 tickets to the Reception + scholarship recipient)	\$1,750		\$
1 Corporate Scholarship given in your company's name (includes 2 tickets to the Reception + scholarship recipient)	\$1,250		\$
1 Distinguished Chapter Award presented in your company's name	\$500		\$
1 Reserved table of 8 (premium placement)	\$625		\$
1/2 Reserved table of 4 (premium placement)	\$325		\$
Individual Tickets	\$75		\$
Total Scholarship and Awards Reception:			\$
General Chapter:			
General Body Meeting Sponsor:	\$300		\$
Program Event Sponsor:	\$500 - \$1000		\$
General Fund Donations	\$		\$
Total General Chapter:			\$
Grand Total			\$

Corporate Participation Form

We encourage your company to partner with us. Please review the Corporate Partnership Levels on the previous page.

General fund contributions are allocated as follows: 50% to the scholarship program; 30% to ACAP; and 20% to the general fund.

Company Name _____

Mailing Address _____

Contact Name _____

Contact Phone Number _____ Contact Fax Number _____

Email Address _____

Corporate Partnership Levels

- | | |
|--|---|
| <input type="checkbox"/> Platinum: \$5,000 | <input type="checkbox"/> Gold: \$4,000 |
| <input type="checkbox"/> Silver: \$2,500 | <input type="checkbox"/> Contributor: \$1,500 |

Scholarship & Awards Reception

- ☐ Reserved table for 8: \$600
- ☐ Reserved table for 4: \$400
- ☐ Individual Tickets (each): \$100 # _____

Additional Sponsorship Opportunities

- ☐ Scholarship Award (\$1000 min.) \$ _____
- ☐ General Fund Donation \$ _____

Additional A La Carte Opportunities

- ☐ Financial Literacy Program: \$3,000
- ☐ Opening Reception: \$2,000
- ☐ Closing Reception: \$2,000
- ☐ Daily Break-out Sessions (5): \$200
- ☐ Program Donation: \$ _____

Forms returned without checks will be invoiced. Authorized signature is required.

Total Amount Committed: _____

Authorized Signature: _____

Return Form and Check To:

NABA, Inc. Detroit Chapter, P.O. Box 32883, Detroit, MI 48232

Visit our website: www.nabadetroit.org

Calendar of Events

- Accounting Career Awareness Program (ACAP)
- NABA Chapter Scorecard Reporting
- Membership Drive Kickoff

JUL

- Life Remodeled Community Service Event
- Student Fall Day with NABA

AUG

- Central Region Student Pre-Conference Seminar
- National NABA Board Meeting

SEP

- Central Region Student Conference
- General Body Meeting
- NABA Chapter Scorecard Reporting
- Membership Deadline for Board Member Nominations

OCT

- Division of Firms CPE Seminar & Conference
- Community Service (TBD)

NOV

- NABA Joint Holiday Mixer
- National NABA Board Meeting
- Adopt-A-Family

DEC

- General Body Meeting
- VITA Training
- NABA Chapter Scorecard Reporting

JAN

- Personal Development Seminar
- VITA Training

FEB

- VITA
- National NABA BOD Meeting

MAR

- Student Spring Day with NABA
- After Tax/Busy Season Networking Event
- NABA Chapter Scorecard Reporting

APR

- Leadership & Empowerment Conference

MAY

- Annual Scholarship & Awards Banquet
- Annual National Convention and Diversity Expo
- General Body Strategic Planning Retreat

JUN