

# AEROLITE LEAD LIGHT

## APPLICATION

The Aerolite is a Zone 1 lead light used mainly in Aircraft maintenance. The product is supplied as a set of two flameproof lights and one non-certified power supply unit.



## CONSTRUCTION

Each light fittings consist of a polycarbonate pipe with a powder coated aluminum cap attached to each end. A flameproof gland attaches a 20 meter cable to each light fitting. Inside the fitting is a globe, electronic inverter and reflector. A powder coated stainless steel swivel hook is attached to the top end of the each light. The lights are plugged into the power unit via standard 5 amp, 3 pin plugs.

The non-certified power unit consists of a powder coated mild steel box with two 5 amp socket outlets attached. Inside is a transformer, regulated power supply and two separate over-current trip circuits.

## ELECTRICAL SPECIFICATIONS

### POWER UNIT

Input voltage = 230V AC.

Output supply = 2 x 12V DC current protected.

### LIGHT FITTING

Input voltage = 12V DC

11W compact fluorescent.

## DIMENSIONS AND WEIGHT

Weight = 0.75kg

## ORDER INFORMATION

### POWER UNIT

Part number: AMAPU-011

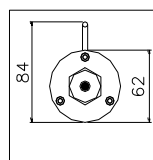
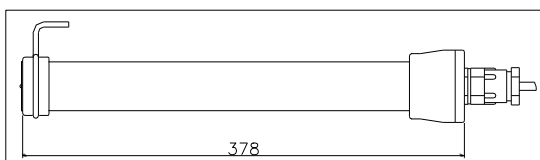
### 11W LIGHT FITTING

Part number: AMAL2-011

## CERTIFICATION

Ex d IIB+H<sub>2</sub> T4 Gb

Cert. No: S-SM7/11.0129



**Electroflame**

TEL: (011) 805-5955/6

FAX: (011) 805-5957

