



Termite and EHB Protected Australian Pine Framing

Product Guide



Timberlink Blue® is Australian grown plantation pine that has been treated to provide protection from termite and European House Borer (EHB) attack.

If you are building in a termite or EHB risk zone Timberlink Blue is the simple, cost effective, and environmentally friendly solution for protecting the structure of your home.

Low Cost Piece of Mind

The price difference between protected and unprotected plantation framing is small. Typically, the cost of treatment is less than two percent of the value of the average house and land package: a small price to pay for 25 years' peace of mind.

Guaranteed Protection

Timberlink Blue comes with a 25 year guarantee against termite and European House Borer (EHB) attack. This limited guarantee is fully transferable between home-owners for the life of the guarantee period making a Timberlink Blue frame a valuable asset for any future sale of your property. The guarantee can be downloaded from timberlinkaustralia.com.au

Safe

Rest assured that while lethal to termites and European House Borers, the chemicals used in Timberlink Blue are perfectly safe for you, your family, and pets and have been approved for use by the APVMA (Australian Pesticides and Veterinary Medicines Authority).

Structurally Graded Strength

All Timberlink Blue branded timber is produced under a system compliant with AS1748.1:2011 so the structural properties of Timberlink Blue MGP10 all exceed the requirements for both MGP10 and F7 grades in AS1720.1:2010. If a design compliant with AS1720.1:2010 specifies the use of F7 grade timber, Timberlink Blue MGP10 can be safely substituted.

Easy to Use

Timberlink Blue has a high strength to weight ratio yet is easy to transport and move around a building site. On-site adjustments are easy to make helping to save time and money.

Australian Made

All Timberlink Blue branded timber is made in Australia from sustainably grown Australian plantation pine. Your purchase helps keep manufacturing jobs in Australia.

Sustainable & Environmentally Friendly Australian Pine

Timberlink Blue framing is made from sustainably managed renewable Australian plantation pine and is independently Chain of Custody certified to originate from independently chain of custody certified to originate from sustainably managed plantations with over 90% from plantations certified to the Australian Forestry Standard, AS4708.

Pine is one of the most environmentally friendly building materials on offer - actually helping to reduce greenhouse gas emissions. Pine trees (like all trees) absorb carbon as they grow and continue to store the carbon once harvested. About half the dry weight of a tree is carbon - carbon that remains locked up in the wood when used for building and even if recycled at the end of the building's life. If disposed of in landfill, the carbon remains locked up for many generations.

Visit naturallybetter.com.au



Whole of House Protection

Timberlink Australia recommends using a “whole of house” protection approach against termites which conforms to AS3660.1. Timberlink Blue timber is protected against termite and EHB attack, forming an integral part of the homeowner's termite management systems.

Timberlink Blue does not in itself form a barrier to termites, nor does it protect other termite susceptible timbers or materials used in the house. This should be supplemented by regular competent building inspection and maintenance as detailed in AS3660.2. Failure to take appropriate care with inspection and maintenance against termite activity in your home may result in considerable damage and costs.

Termite and EHB Risk Assessment

Termite map of Australia (Source: leicester et al., 2003)

Are you building in a termite risk zone?

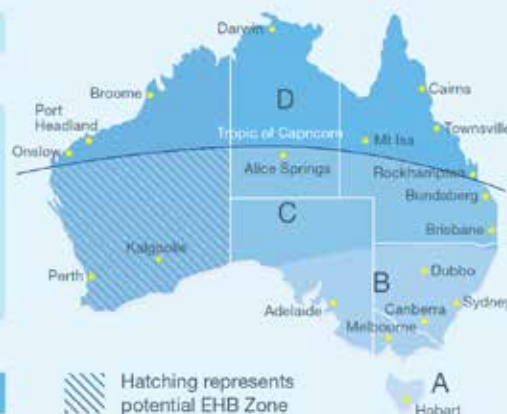
Use the map and decision tree to determine the likelihood of termite attack in your area. Timberlink Blue is suitable for the majority of Australia's populated areas. If building above the Tropic of Capricorn, H2 or better treated framing such as Timberlink Green should be used due to the different termites found there.

Are you building in an EHB area?

If you are in Western Australia you need to check if you are building in a European House Borer (EHB) restricted movement zone (RMZ).

If you are, the Agriculture and Related Resource protection (European House Borer) Regulations 2006 require the use of pine that has been treated to hazard level H2 (H2F included) or higher or non-EHB prone wood. This makes Timberlink Blue an ideal choice for roof framing when building in WA. To find out the latest RMZ boundaries visit ehb.wa.gov.au as they are updated regularly.

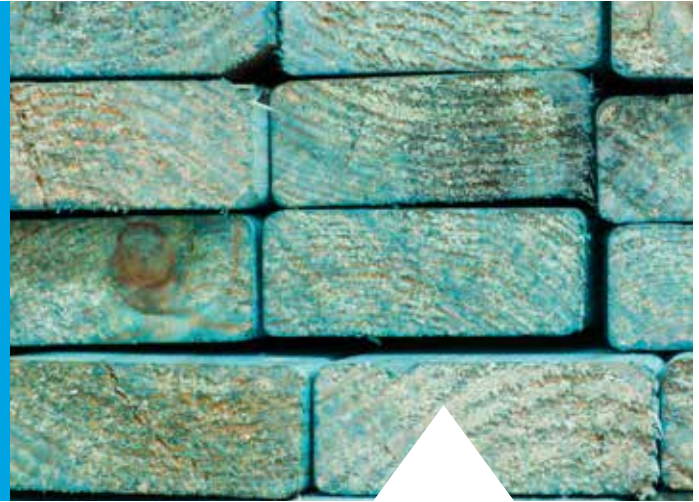
Assessing if the site has a high risk of attack:



TIMBER LINK

BLUE AUSTRALIA

Product Specifications



Timberlink Blue Range

Sizes (mm) 70 x 35, 70 x 45, 90 x 35, 90 x 45, 120 x 35, 120 x 45, 140 x 35, 140 x 45, 190 x 35, 190 x 45, 240 x 45

Lengths (m) 2.4 to 6.0 in 600mm increments

Grade F5, MGP10, MGP12, MG15

Sizes may vary by state.

Timberlink Blue® for guaranteed peace of mind. Why would you build with anything else?





Installation and Handling

Suitable Uses

Timberlink Blue is treated to an H2F level and is structurally graded. It is suitable for indoor load bearing, above ground applications built south of the Tropic of Capricorn. For outdoor load bearing applications, or if building above the Tropic of Capricorn, use Timberlink Green.

Fixings and Adhesives

The treatment used on Timberlink Blue does not adversely affect nail and nail plate holding, joint strength, plaster board adhesion nor is it corrosive to metal fixings.

Resealing

The chemical supplier guarantee does not require resealing on end cuts to timber 140 x 45mm or smaller or on trenches or notches if fitted against a piece of timber treated to an H2F level or higher. Drilled holes do not need resealing. The chemical supplier guarantee does require resealing on planed edges and cut ends of timber bigger than 140 x 45mm unless joined against a piece of timber that is treated to an H2F level or higher.

Identification

Each stick of Timberlink Blue has an ink-jet treatment mark and a blue dye is added to the treatment to help identify the timber as termite and EHB protected.

Onsite Storage

When storing Timberlink Blue prior to use keep it wrapped and strapped in its plastic packaging and off the ground. Exposure to weather during construction should be minimised.

Treatment

Timberlink Blue timber is treated with either Midacloprid or Permethrin as the active insecticide.

Safety and Handling

When handling and cutting any timbers it is advisable to wear dust masks, goggles and gloves. Do not burn treated timber. Safety Data Sheets (SDS) are available from timberlinkaustralia.com.au

Waste Disposal

Any waste is regarded as nonhazardous as the active ingredients in the treatment are synthetic pyrethroids which are biodegradable and do not bio-accumulate. Timberlink Blue off-cuts can therefore be disposed of in normal waste collection for landfill. No treated timber products should be used in composting or animal bedding nor should they be burned.

Recommended Site Procedures

- Check all timber delivered to site for brand markings on the faces or end grain. If the timber does not bear brand markings (for example if it has been pre-cut and assembled into frame or truss units prior to delivery) then you must get your builder or supplier to obtain the brand details for the timber supplied.
- Do not rip saw, dress or plane Timberlink Blue down to reduced dimensions as this may reduce or nullify the protection afforded by the treatment.
- We recommend the installation of a treated structural timber termite protection notice in two secure locations in your house.

Recommended Maintenance Procedures

- Do not store termite susceptible wood or cellulose based material under or next to your home.
- Do not build structures against the side of buildings without the necessary measures to prevent termite entry. Consult the Building Code or your local council for recommendations.
- Do not build garden beds or raised lawns against the side of dwellings as this can provide an access point for termites.
- Regularly inspect for termite mud tracks entering your home and have a qualified pest or building inspector assess your property for termite activity every one to two years.
- Repair any plumbing or roofing leaks immediately as water may promote wood rot and encourage termite foraging.
- Have any termite activity in or next to your home treated immediately by a qualified pest controller if detected.



www.timberlinkaustralia.com.au

Phone 1800 088 135

TIMBER LINK
BLUE AUSTRALIA

August 2016

