

Optimise the efficiency of your Wastewater Treatment Plant using UV254 measurement.

Whether it is BOD/COD measurement for aeration management, chemical dosing or monitoring your UV disinfection performance, UV254 measurement will provide you with a fast, responsive and cost efficient means of optimising your process.

UV-254 Probe

Small footprint probe with 39mm diameter. The probe can be configured with either a 2mm, 5mm, 20mm or 50mm path length depending upon the water quality and measurement requirements.

Self monitoring and fouling compensation ensures a long time between services.

The stainless steel housing for the probe and flow cell are suited to use in dirty water. The flow cell has a special cleaning port for use with a jet wash system.

Investigate trends and upsets with data storage that records every measurement

Modern Control Unit

Display results, trend and alarm data in real time for multiple parameters simultaneously on a colour display control unit with a touch screen interface.

Data Review

Store a lifetime of data on the analyser.

See a graphical review of trend data

Easily transfer Excel-compatible CSV output files

Removable secondary storage device

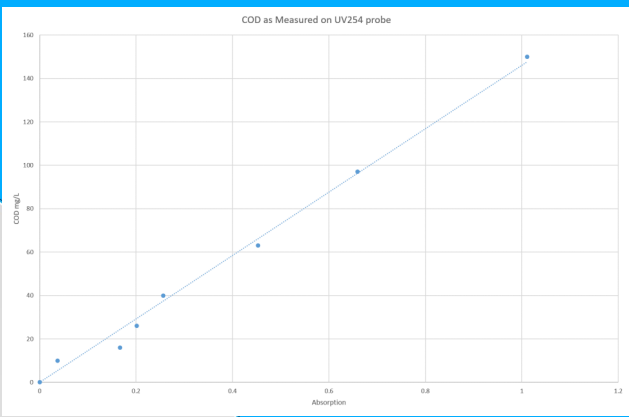
Advanced Optics and Electronics

Long life pulsed UV LEDs ensure an extended service life and have none of the decay issues associated with mercury lamp analysers

* Measurement of surrogates requires routine calibration to standard procedures, as the water matrix chemistry may change with time.

**Measurement of SUVA requires the probe to be periodically updated with the current dissolved organic carbon from the water.

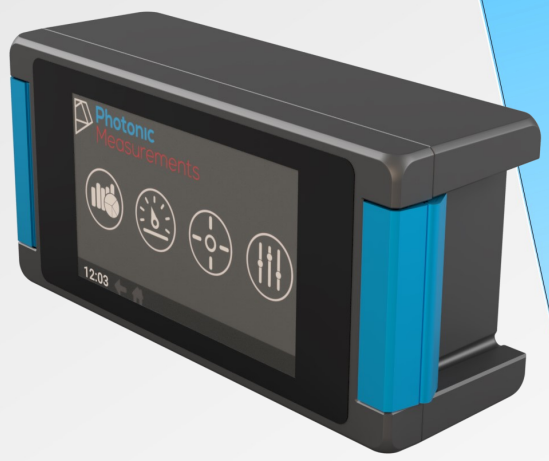
Measurements	UVA, UVT and SUVA Surrogate measurements TOC, BOD, COD and others
Range	0-100% UVT 0-2.5 ABS
Accuracy	±0.5% UVT
Repeatability	±0.05% UVT
Path Length	2, 5, 20 or 50mm
Sampling Time	10 Second
Material	Stainless Steel
Wavelength	254nm LED and narrow filter photodiode
Light Source	Deep UV LED Long life, self monitoring
Data Logger	Lifetime measurement storage. Secondary removable storage.
Dimensions	Probe: 39mm diameter Height 150mm + path length Control Unit: 262x128x91mm
Display	800 x 480 pixel 7in Capacitive Touch TFT colour LCD
Operating Conditions	10 to 45 °C, max 80% relative humidity (non-condensing)
Storage Conditions	-25 to 60 °C, max 80% relative humidity (non-condensing)
Enclosure Rating	Probe IP68, Control Unit IP65
Interfaces	4-20mA, USB, RS-485, Optional Ethernet
Warranty	2 years
Cleaning System	Jet wash



Measurement of COD with probe



Flowcell



Touch Screen IP65 Monitor