

# Salem Methodist Preschool

## May 2017



### Calendar

Thurs May 4th - Author's Tea (4's-A and 4's)

Fri May 5th - Paperwork and May 2018 tuition due to preschool office

Tues May 9th - Tea for Two (PK)

Wed/Thurs May 10/11 - Stretch N Grow sessions

Mon/Tues May 15/16 - Citizen's Park field trip (2's and Young 2's)

Wed May 17th - Gateway to Science field trip (PK, 4's-A and 4's)

Fri 5/19 - Salem Youth Babysitting Night (6-9 pm)

Wed May 24th - Crossing Over Ceremony (PK) in Sanctuary

Thurs May 25th - Last day preschool classes

Fri/Sat May 26-27 - Salem UMC Rummage Sale in Fellowship Hall

Fri May 26th - All School Picnic 10-12 at Ron Beese Park

Fri May 26th - Extended Care **only** at Salem (7am-6 pm)

Mon May 29 - Memorial Day (no school)

Tues May 30- Extended Care **only** at Salem (7am-6pm)

**Dear Parents,**

**We had a wonderful Week of the Young Child celebration last week! Thanks to all of our families who attended the storyteller event and we all had fun with our special days at Salem. This week was a wonderful celebration of our children. I hope you also enjoyed the artwork that filled the halls!**

**May is a busy month for the preschool. We have caterpillars in the building which are beginning to grow and move into the chrysalis stage. Later this month we will see lots of new butterflies and continue to enjoy more time outside! Please remember to apply sunscreen to your child PRIOR to their arrival at school in the morning.**

**Just a reminder that paperwork for 2017-2018 and May 2018 tuition is due on or before Friday May 5th. Please turn this in if you haven't done so already. The office will begin to update student files this month.**

**It is hard to believe that this is the last newsletter for the 2016-2017 school year. Where did the year go? I would like to take this opportunity to thank you for sharing your children with us, each one is so special! I feel very blessed to have been able to be a part of your child's preschool life.**

**For those of your going on to kindergarten and first grade, moving, or changing schools, we wish you all the best. For those returning next year, we will look forward to seeing you in the fall. The staff and I would like to say "Thank You" for sharing your children with us this year! Have a safe and happy summer.**

**Cindy**

Wed/Thurs May 31/June 1  
- Week #1 of summer  
camp and Extended Care

Mon July 3rd and Tues  
July 4th - Salem Closed

Camps continue through  
July 20th

Extended Care continue  
through July 28th

Salem closed July 31 -  
Aug 11

Mon Aug 14th - Extended  
Care continues

Mon Aug 21st - Ready Set  
Preschool begins  
(9-12:30)

Tues Aug 29 - Parent  
Orientation Night 7:00 pm

Thurs Aug 31 - All School  
Visitation (9-11:30 am)

Mon Sept 4th - Labor Day  
- Salem Closed

Tues Sept 5th - Preschool  
begins

# Salem Methodist Preschool & Extended 2017-2018 calendar (click here)



## All School Picnic

On Friday, May 26th we will have our annual "All School Picnic" at Ron Beese Park. A parent and/or caregiver must accompany your child to this event. The preschool staff will be at the park from 10:00 am until 12:00 pm. There will be picnic tables set up for us in the shelter. You and your child are welcome to stay the entire time or stay however long your schedule permits.

The school will provide water to drink and paper products. During the past, many families have brought a snack, fruit tray, or goodies to share. A delicious spread was created for all! You are welcome to continue this tradition.

Extended Care will still be running at Salem on Friday for the entire day. You are welcome to pick up your child and go to the picnic if this works for your schedule. Watch for a note coming home about this.

Please remember that you will need to be with your child - the staff will be available, but can NOT be responsible for individual children. See you there!

## Saying Goodbye -

Salem is sad to say goodbye to Mrs. Charlotte Kovalsky - aka Mrs. K (2's, 3's and Enrichment teacher) at the conclusion of this school year. Mrs. K has been a teacher at Salem for 16 years and she will be venturing out in a new direction! We will miss her and wish her all the best!

Mrs. Julie Bjerregaard-Dionne (Mrs. B-D) in the Young 2's will also be switching to a substitute at Salem next year. We will still keep her busy with us!

## 2017-2018 Enrollment Forms

Please remember that the enrollment forms and May 2018 tuition must be turned in on or before Friday May 5th to guarantee your child's placement for next year. The physical forms are due to the office by July 21st. DCFS requires that physical forms are good for two years. Remember to make your appointment EARLY if the forms need to be updated. There are new physical forms that have been released from the state so please check to be sure you are using the correct form. Thank you.

# Earth's Birthday Project



The preschool has been participating in Earth's Birthday project. Children all over the world are collecting coins to help protect the Amazon rainforest. Every penny raised purchases and protects one square yard of critical habitat. Please return your "bank" to the preschool office if you haven't done so already! Thanks for helping the earth!

## Salem Summer Camp!

Preschoolers are welcome to join us for weekly sessions during the last week of May through July 20th (7 weeks!). The program will be offered on Mon-Tues-Wed-Thurs from 9:00 am until 12:30 pm each week except for the last week of May which will be 3 days. Extended Care will also run during this time Mon-Fri 7:00 am - 6:00 pm through the end of July. Some age groups are full or very close to full, so please check with the preschool office for availability.

Each week will be a special summer theme and will include water-based activities! The cost is \$125 per week. Registration materials are attached to this newsletter and sign up is going on now! A \$15 nonrefundable registration fee is due at the time of registration with the remaining tuition amount due prior to the start of the program week.

Wed 5/31-Thurs 6/1 - Fun and Games!

Mon 6/5-Tues 6/6-Wed 6/7-Thurs 6/8 - Around the World!

Mon 6/12-Tues 6/13-Wed 6/14-Thurs 6/15 - My Big Backyard

Mon 6/19-Tues 6/20-Wed 6/21-Thurs 6/22 - Splish, Splash!

Mon 6/26-Tues 6/27-Wed 6/28-Thurs 6/29 - Red/White/Blue (PARADE/PICNIC on Thurs 6/29)

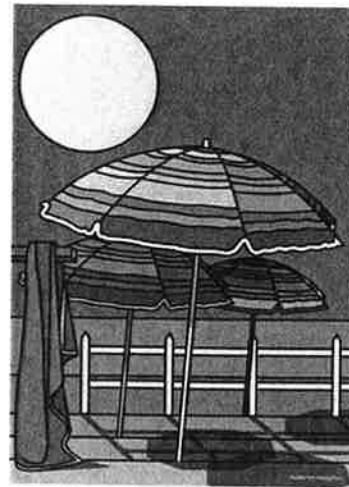
Week of July 5 - 7 - Extended Care ONLY (closed 7/3 & 7/4)

Mon 7/10-Tues 7/11-Wed 7/12-Thurs 7/13 - Over the Moon

Mon 7/17-Tues 7/18-Wed 7/19-Thurs 7/20 - Wild Wild West

Week of July 24-28 - Extended Care ONLY

We are VERY excited!!!!



## 2017 - 2018 School Year

The preschool office will be open through the end of July while summer camp and Extended Care is running. The office will be closed July 29-August 13 and reopen on Monday, August 14th.

Extended Care will begin again on Mon 8/14. We will again offer "Ready Set Preschool" starting Mon 8/21-Wed 8/23 and Mon 8/28-Wed 8/30 and will run through Wed 8/31 from 9-12:30.

Our Parent Orientation is scheduled for Tuesday, August 29th at 7:00 pm. At this time parents will have the opportunity to meet the teachers, see classrooms, pick up paperwork, attend general orientation, and a class specific information session.

Classroom visitations will take place on Thurs 8/31 and classes, enrichment and

Stay 'N Play will begin on Tuesday 9/5. A summer reminder letter will be sent out in late July to all 17-18 families. A copy of the 2017-2018 school calendar is attached above.

## A Place to Park your Bikes!

We have a wonderful bike rack located on the south part of the building. If you need to leave a bike here for the day, please use this space!



Thank you!

## Salem Youth Babysitting Night

Support the Salem Youth as they raise monies for their upcoming summer mission trip and bring your children to the next Babysitting Night on Friday May 19th from 6-9 pm in Fellowship Hall. Dinner, free play and a movie are planned for children ages 3 and up. Donations appreciated.

Please RSVP to the church office (847) 381-0524 by Wed 5/17.

## Friendly Reminders!

Please help us with reminding the children to NOT walk along the retaining wall or sidewalk curb by the playground. We reinforce this as classes come and go to the playground.

Also, please remember to send your child in tennis shoes. It is nice to begin wearing sandals and flip flops in the spring, but they are slippery and can be difficult to run in on the playground.

Please apply sunscreen to your child PRIOR to their arrival at school each morning.

Thank you!

## Salem UMC Rummage Sale!

Salem UMC is hosting a rummage sale from Friday, May 26 - Saturday, May 27 in Fellowship Hall. Have some items you no longer need. Make room in your house and donate your gently used items for the sale. Collection boxes are located outside the church office and by the nursery. Call the church office at 847-381- 0524 if need assistance with larger items or large quantities of items. And you never know what you can find at the sale so stop in. All proceeds to benefit Salem UMC. Please contact Pat Enders at 847-404- 5151 with any questions.

Thanks as always for your support.



**SALEM METHODIST PRESCHOOL & EXTENDED CARE  
2017-2018 CALENDAR**

**AUGUST**

Monday	Aug 14	Extended Care Program begins
Mon-Wed	Aug 21-23	Ready, Set Preschool Camp 9:00 am-12:30 pm
Thursday	Aug 24	Staff Meeting 9:00am – 2:00 pm
Mon-Wed	Aug 28-30	Ready, Set Preschool Camp 9:00 am-12:30 pm
Tuesday	Aug 29	Parent Orientation Meeting 7:00 pm (parents only)
Thursday	Aug 31	All-School Visitation (9-11:30 am)

**SEPTEMBER**

Monday	Sept 4	Labor Day – NO SCHOOL
Tuesday	Sept 5	All classes, enrichment classes and Stay ‘N Play begins
Mon/Tues	Sept 25/26	Vision and Hearing Screening (3 yr + students)

**OCTOBER**

Mon-Thurs	Oct 2-5	School Pictures
Mon/Tues	Oct 30, 31	Fall Festival celebrations – during class time

**NOVEMBER**

Mon-Wed	Nov 6-8	Pre-K Fall Conferences – school in session
Mon-Thurs	Nov 13-16	4’s Fall Conferences – school in session
Mon/Tues	Nov 20/21	All School Thanksgiving Feasts
Wed	Nov 22	NO SCHOOL – Teacher Institute Day
Thurs/Fri	Nov 23 & 24	NO SCHOOL – Thanksgiving Holiday
Tuesday	Nov 28	Gingerbread Celebration (PK class)

**DECEMBER**

Wed/Thurs	Dec 20/21	Christmas Programs; last day of classes before Christmas break (Dec 22-Jan 7)
Fri	Dec 22	Extended Care in session
Mon-Fri	Dec 25-29	Christmas Vacation – NO SCHOOL OR EXTENDED

**JANUARY**

Mon	Jan 1	CLOSED – New Year Holiday
Tues-Fri	Jan 2-5	Extended Care in session
Tues-Thurs	Jan 2-4	Winter Camp (9:00 am – 12:30 pm)
Mon	Jan 8	Preschool classes resume
Mon	Jan 15	NO SCHOOL – Martin L. King Holiday

**FEBRUARY**

Tues/Wed	Feb 13/14	Valentine’s Day parties
Mon	Feb 19	NO SCHOOL – President’s Day
Mon-Fri	Feb 26-Mar 2	Book Fair

### MARCH

Thurs	March 1	<b>No classes - Parent-Teacher Conferences</b> (Extended Care and Enrichment classes in session)
Fri	March 2	<b>No classes – Parent-Teacher Conferences</b> (Extended Care, and Enrichment classes in session)
Wed	March 14	Donuts With Dad (8:30-9:00 am)
Thurs	March 15	Donuts With Dad (8:30-9:00 am)
Fri	March 16	Donuts With Dad (8:30-9:00 am)
Mon-Mon	Mar 26-Apr 2	Spring Break

### APRIL

Mon	Apr 2	CLOSED – EASTER MONDAY
Tues	Apr 3	Classes resume
Mon-Fri	Apr 16-19	Week of the Young Child
	TBD	PM Event
Fri	Apr 20	<b>NO PRESCHOOL – Extended ONLY</b> (Teacher Institute Day)

### MAY

Tues	May 8	Tea for Two – Pre Kindergarten class
Thurs	May 10	4's Author's Tea
Wed/Thurs	May 23/24	Last Day of preschool classes
Fri	May 25	All School Picnic Day – Ron Beese Park
<b>** Each student must be accompanied by a parent or guardian **</b>		
Mon	May 28	Memorial Day – NO SCHOOL
Tues	May 29	Extended Care continues
Tues	May 30-31	Salem Summer Camp – Week 1

### JUNE

June	June 1-29	Extended Care continues through July 27 <sup>th</sup>
June	June 4-28	Salem Summer Camp! (Mon-Thurs)

### JULY

Wed	July 4	4 <sup>th</sup> of July Holiday – NO EXTENDED CARE/Camp
Thurs-Fri	July 5-6	4 <sup>th</sup> of July Holiday- NO EXTENDED CARE/Camp
July	July 2, 3, 9-27	Extended Care continues through July 27 <sup>th</sup>
July	July 9-19	Salem Summer Camp! (Mon-Thurs)

### AUGUST

	July30-Aug 10	Summer Break – NO EXTENDED CARE
Mon	Aug 13	Extended Care program continues

Specific information on Picture Day, parties, field trips, etc. will be given in monthly newsletters.

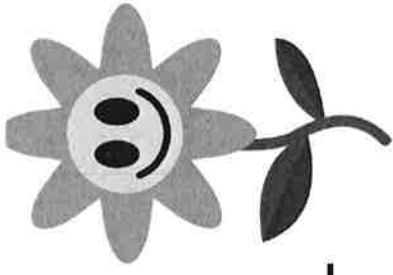
School will be cancelled only for inclement weather making it dangerous and/or unsafe to travel. Listen to radio stations WMAQ 670, WGN 720, or WBBM 780 for information regarding school closings. Information is also posted on [www.emergencyclosingcenter.com](http://www.emergencyclosingcenter.com)

APPROVED

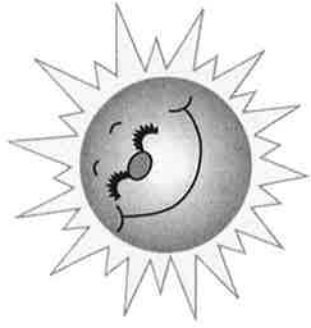
4/13/16


Extended Care Dates





# May 2017



Sun	Mon	Tue	Wed	Thu	Fri
	1	2	3	4	5
				4's-A & 4's Author's Tea	2017-2018 paperwork and May 2018 tuition due
7	8	9	10	11	12
		Pre K Tea for Two	Stretch N Grow	Stretch N Grow	
14	15	16	17	18	19
	Young 2's and 2's to Citizen's Park	Young 2's and 2's to Citizen's Park	4's-A, 4's and Pre K field trip to Gateway to Science		Salem Youth Babysitting Night (6-9 pm)
21	22	23	24	25	26
			Pre K Crossing Over Ceremony	Pre K to Miller Park Last day of classes	Rummage Sale All-School Picnic at Ron Beese Park (10-12)
28	29	30	31	June 1	June 2
	Memorial Day Salem closed	Extended ONLY (7am-6pm)	Summer Camp (week #1) Fun & Games	Summer Camp (week #1) Fun & Games	Extended ONLY (7am-6pm)
					June 3
					Rummage Sale