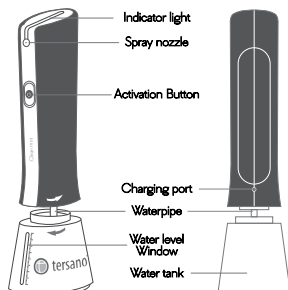


PREPARATION

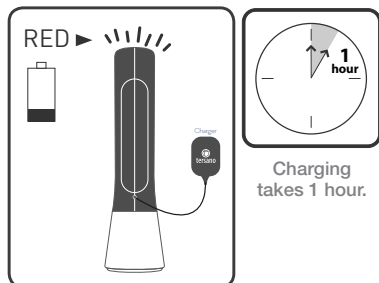
IMPORTANT:
 Familiarize yourself with your new iClean mini.

Your iClean mini kit includes:

- iClean mini Device
- Charging cord
- Instruction sheet
- Gift box



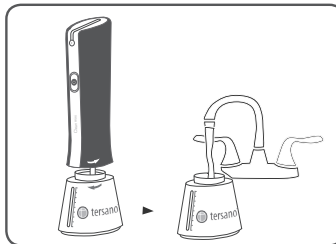
CHARGE



- The charging port is located on the back of the iClean mini.
- Connect the charging cord to the device.
- Plug the charging cord into a standard outlet (AC 100-240V/60Hz 0.3A).
- A **slowly flashing red light** on top indicates charging is taking place.
- Charging is complete when a **blue light** on top flashes.
- Unplug the charging cord from the outlet and disconnect the charger from the iClean.

Note: If iClean mini does not operate when activation button is pressed, the iClean mini needs to be recharged. iClean mini will not operate during the charging process.

FILL



- Turn reservoir on base counter-clockwise and remove from iClean mini.
- Fill reservoir with cold tap water **ONLY**.
- Reattach reservoir to iClean mini and turn clockwise to fasten tightly.
- Fill with tap water **ONLY**.
- Do **NOT** add chemicals or soap.
- Do not submerge under water.

USE

INDICATORS

- When activation button is pressed, a **continuous blue light** on top indicates iClean mini is producing aqueous ozone.
- A **continuous red light** on top indicates reservoir is empty.

CLEAN

- Press activation button on front of iClean mini to wet surface to be cleaned.
- Wipe surface dry with a cotton, microfiber, or paper textile.

Note: no need to wipe completely dry – residual water will evaporate without streaking.

SANITIZE

- Kill germs only on hard, non-porous surfaces.
- Clean surface with the iClean mini.
- Press button and continuously spray surface with aqueous ozone.
- Wipe surface dry with any clean cloth.

CARE

RECHARGING

- It is not necessary to drain battery completely before recharging.
- **ONLY** use charger supplied with iClean mini kit.

MAINTENANCE

To maintain consistent performance, follow these care instructions.

- Empty reservoir at the end of each day.
- With empty reservoir attached, press activation button for 5 seconds to clear excess water.
- When iClean mini has not been used for more than 5 days, fill reservoir completely, press activation button, and spray until reservoir is empty. Then refill reservoir and iClean mini is ready for use again.
- Use only attachments and replacement parts sold or recommended by manufacturer.
- iClean mini is **NOT** dishwasher safe.
- iClean mini is not a toy. Supervision required when children present.

STORAGE

- Empty water from reservoir.
- Store upright at room temperature.
- Do not dispose of device or battery in household trash. Dispose of properly. Contact Tersano with questions.
- Store upright and indoors above 40°.

Product may vary slightly from illustrations enclosed in this use and care guide.

PRODUCT DESCRIPTION

iClean mini	Aqueous ozone	Colour	Dark blue
Model	LQFC200	Water Quality	Clean tap water
Battery	7.4V Li-ion	Water Temperature	4-40°C
Charger	9V DC (100-240V AC 50-60Hz)	Net Weight	300g
Dimension	85 x 63 x 230mm	Tank Capacity	150ml
Charging Time	1 hour	O ₃ Water Concentration	up to 1.7 ppm

CAUTION

- For first time usage, charge for 4 hours and then spray at least one tank of water to activate the unit in order to achieve the normal concentration value of O₃ water.
- Do not spray directly into the eyes.
- Avoid flushing the unit with water.

iClean™ mini

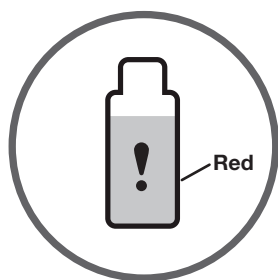
IMPORTANT SAFETY INSTRUCTIONS.
READ THESE INSTRUCTIONS COMPLETELY.
SAVE THESE INSTRUCTIONS FOR FUTURE REFERENCE.

REPLACEMENT SAO™ CARTRIDGES

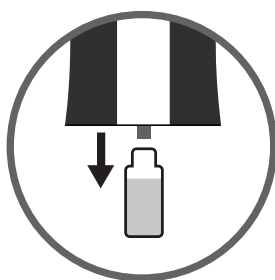
Ensures iClean mini Sanitizes and Deodorizes

One filter lasts over 1,000 sprays

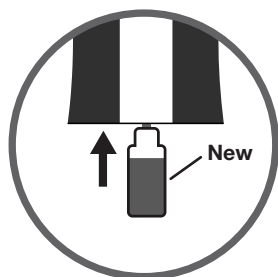
CHANGING YOUR iCLEAN™ MINI CARTRIDGE



1. When cartridge window changes orange to red, time to replace.



2. Open reservoir, pull down cartridge to disengage.



3. Push new cartridge up and onto notch.



4. Replace reservoir.



Replace cartridge every
3 months (seasonally)

**Cartridge replacement is
essential for the iClean™ mini to
properly sanitize and deodorize.**

*Product may vary slightly from illustrations
enclosed in this use and care guide.*



QUESTIONS OR CONCERNS

Contact Tersano at 800-727-8835 or +1 519 737 7588
with questions or concerns about your iClean mini.