



Green  **Desert Landscaping**

cultivating your garden in perfection!
Call us - to simply get inspired!



**We design & build
Attentive. Responsive. Solution oriented.**

**...where the garden becomes a place
of wellness and benefits.**

THE PATH WITH US INTO A GREEN FUTURE...



LIVE GREEN



JUST DO IT

CONTENTS

- 2 | LANDSCAPING
- 3 | WATERSCAPING & IRRIGATION
- 4 | HARDSCAPING & LIGHTNING
- 5 | LIVING WALLS / VERTICAL GARDENS

- 6 | ARTIFICIAL GRASS "ROYAL GRASS"
- 7 | WATER-WISE LANDSCAPING
- 8 | DESIGN



A Complete Solution for Your Landscaping Vision.

IT'S YOUR WORLD, LET US CREATE YOUR PARADISE.

We offer cost-effective landscaping solutions for both residential and commercial properties with a focus on water conservation and drought tolerant landscapes. We have established a reputation for meeting and exceeding expectations through quality workmanship and outstanding customer service for landscape projects of all sizes.

Green Desert Landscaping will work with you to blend creative ideas and design innovation with the beauty of your natural surroundings.

Together we can create an environment you will truly call your own.



SERVICES PROVIDED

3D Rendering, Custom Fire Pits, Custom Water Features, Drought Tolerant Landscaping, High Quality Artificial Grass "Royal Grass", Garden Design, Gazebo Design & Construction, Greenhouse Design & Construction, Hardscaping, Landscape Design, Landscape Plans, Patio Design, Site Planning, Concrete Construction, Landscape Maintenance, Paver Installation, Sod Installation, Weed Control, Lawn Mowing Services, Trellis & Pergola Construction, Outdoor Kitchens, Outdoor Fireplaces, Retaining walls, Fire pits...

GREEN DESERT LANDSCAPING PROVIDES A TOTAL END TO END SOLUTION FOR ALL YOUR LANDSCAPE NEEDS

Our team sees every job as a privilege and a responsibility. Our mission is to lead people into a love affair with their gardens, to help them to collaborate with Nature as an artistic partner. Wherever we're asked to begin, in the end we have one purpose: to create beautiful surroundings that nurture and inspire. Our outdoor projects bring all elements of outdoor living together. We do complete Landscape Designs and construction so that all of your outdoor living needs can be met simply and efficiently.

Count on landscaping excellence. Built to spec. Built to last.

PROCESS We Design ⇌ We Install ⇌ We Maintain

DESIGN

New gardens are like people: singular, unique. For us, every project is a new beginning.. No templates, no recycling of previous designs.

Our experienced teams will work to understand what a beautiful garden means to you.

INSTALL

Installation is an earthy, practical process where plans become reality. We quote carefully, execute on time, and work with the highest quality materials and craftspeople. Focused attention and quiet professionalism render a finished garden as you dreamed it.



MAINTAIN

Nature is relentless—and she demands constant attention. We make sure your garden receives the consistent, precise, respectful care it requires to look its absolute best, in every season. We quietly come and go, and our careful work makes Nature's beauty appear ef-

Even commercial buildings need a setting. The physical greening of a working environment not only increases the value of the asset but also improves productivity.



flexible solutions for your needs



Responsible irrigation involves the proper management of our most important limited resource – water. Green Desert Landscaping may save you thousands of dollars in water bills over the lifetime of your irrigation system.

- Drip irrigation
- Precision spray nozzles
- Head to head spacing
- Zone pressure regulation
- Proper controller adjustments

These are but a few of the tools we employ to keep your landscape growing, not your water bill!

With the use of modern technology and ‘smart’ design, we are able to ensure that the right amount of water is used for each application – ensuring that this valuable resource is used efficiently. We install irrigation systems for commercial projects, domestic gardens, living walls and green roofs.

There are many benefits related to the installation of an irrigation system in your residential or commercial landscape. We have seen an increase of awareness in the importance of conserving water, for many across Namibia has seen the effects of drought.

By installing an automatic irrigation system that best suits your needs, you will be saving time and money. When you water by hand more than 50 per cent of the

water is wasted in runoff and evaporation.

Automatic irrigation systems can be programmed to run at night when the evaporation is low, and in times of water restrictions.

Individuals who install irrigation systems will benefit greatly, but the environment will also benefit. This is so important that everyone play their part in the conservation of this precious resource.



A BEAUTIFUL WATERSCAPE HELPS TO RE-CONNECT YOU WITH NATURE. GREEN DESERT LANDSCAPING IS EXPERT AT CREATING BEAUTIFUL ENVIRONMENTS THAT ADD CALM AND INTEREST TO YOUR YARD.

PONDS

A garden pond can help your outdoor space become a sanctuary from the stresses of the modern world. Big or small, a garden pond adds a new dimension to any outdoor space. People find the sight and sound of water to be calming and a water feature adds interest to any backyard. Next time you’re at a party in a yard with a pond, take a moment to notice where people tend to congregate and you’ll see that it’s often around the garden pond.

WATER FEATURES

Water features are not only beautiful, adding flow and movement to your landscape, it’s also very soothing and relaxing regardless of the size. Whatever you can imagine, from whimsical fountains to quiet reflection pools, slowly moving streams, and dramatic waterfalls. Whether you decide to add a charming fountain, a calming stream, or an elaborate waterfall, they are a great way to bring tranquility that soothes the soul. Water features drown out unwanted noises while creating a very peaceful atmosphere.

SO WHAT IS WATERSCAPING?

A water feature is any indoor or outdoor decoration that incorporates water. From a small tabletop fountain or container water garden to a retention pond – and anything in-between. Choose from four basic categories that emerge from the range of options...

- **Fountainscapes** are small decorative water features such as tabletop fountains, container water gardens, stand-alone fountains, bubbling urns and fountains that incorporate an in-ground reservoir.
- **Pondless Waterfalls** are simply a re-circulating waterfall and/or stream without the presence of a pond. You can enjoy the sight and sound of running water without the maintenance of a pond.
- **Ecosystem Ponds** are small or large ponds that include a balance of aeration, filtration, plants, fish, rock, and gravel. All components must be present in order to be considered an ecosystem since all components interact to keep the pond naturally balanced, thereby minimizing maintenance.
- **Advanced Ponds** can take the form of a pondless Waterfall or Ecosystem Pond. These large, water features are often found in commercial applications such as an office complex; a residential subdivision, shopping centre, and more!





Green Desert Landscaping specializes in the design and installation of interlocking paver and natural stone walkways, patios, driveways, pool surrounds and segmental retaining wall systems as well as natural stone walls. These elements make up the hardscape features in a landscape.

Whether you envision your space for cooking, outdoor fireplaces, outdoor rooms and shelters or relaxing with family and friends, we can customize your outdoor living area to satisfy your specific needs.

These are popular features that we offer to create that perfect space for you.

Your imagination is the limit! Contact us today to schedule a free consultation. Our skilled designers and professional installation teams will work with you to make that outdoor living area you've been dreaming of a reality!



LIGHTSCAPING

A proper lighting system creates a whole new dimension and whole new way to enjoy your outdoor space. It achieves many desired results from aesthetic beauty to safety and security. While many of us are working hard and putting in long hours on the job, we often don't get a chance to



see our homes until after dark. Soft lighting in a dark outdoor environment is nothing short of magic. It provides a warm, inviting ambiance that beckons us outdoors. It creates mood, romance, and drama. It adds interest and intrigue to any setting. A growing number of homeowners are capturing this magic in their gardens through "nightscaping," one of the hottest trends in outdoor home improvement today. Lighting can be one of the most important aspects of landscape and hardscape design, yet it is often overlooked or underdone.

Proper outdoor lighting design allows you to highlight focal points and hide eyesores. It can also be used to enhance safety and security, to accent special trees or plantings, and to create a festive atmosphere for outdoor entertaining.

Landscape lights also serve a number of needs, from letting you walk safely down a flagstone path at night, to giving you a place to spend time with your family after work. Outdoor lights even deter burglars and reduce crime. Yet for homeowners, choosing which areas to light can be a challenge.

BENEFITS OF LANDSCAPE LIGHTING

- **Increased Security:** Applying lighting strategically around your home or building will illuminate dark corners and shadowed areas. This increases security around your property.
- **Enhanced Style and Aesthetic Appeal:** Lighting can be used to highlight certain architectural features of your home or other elements in your landscaping. Incorporating landscaping lighting throughout your landscaping, will add drama and enhance the look of your landscaping in the evening and night hours.
- **Increased Usability:** Adding lighting around a patio, pool, hot tub, grill, deck, or outdoor kitchen, will illuminate the space. This will allow you to easily use your outdoor spaces into the evening and night hours, whether you're nestled in the redwoods or overlooking the Monterey Bay.
- **Improved Safety:** Poorly lit walkways, patios, and decks can be dangerous for you and your guests. We can add landscape lighting that will illuminate walkways and other commonly travelled areas in order to prevent injuries and accidents.

WHAT IS A HARDSCAPE?

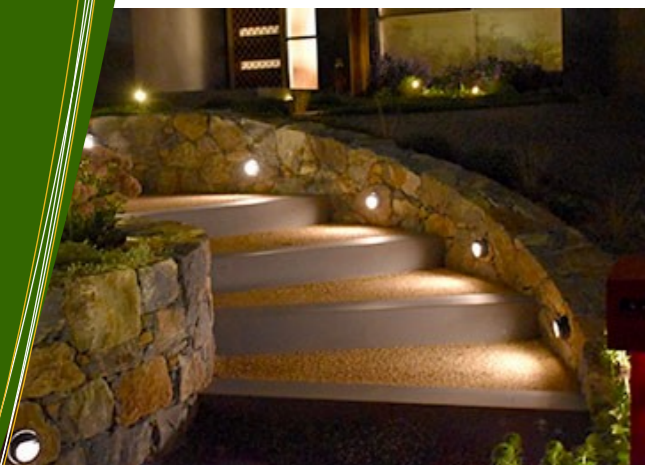
We are asked all the time, what is hardscaping?

Hardscaping is the placement of non-plant elements consisting of structures, such as patios, walkways, retaining walls, steps and fire pits. Made with hard materials hardscapes can be built out of Natural stone, pavers, concrete, brick, & stone.

Each project can be a unique hardscape, with features that will enhance your property's value. There are endless styles, colors, textures, banding, patterns etc. that make it unique.

At Green Desert Landscaping we know choosing the right hardscape contractor can be difficult. Our hardscapes offer both functions, beauty, and are built to last.

We believe the art of design in the Hardscape is the basic strength and foundation in every Garden or Landscape.





BIODIVERSITY, HEALTH AND WELLBEING

What better way is there to communicate your company's green credentials than a living wall? Adopted by Marks and Spencer as part of their Plan A sustainability strategy and countless other retailers including West Elm, Anthropologie and Aveda – living walls are a striking design feature. Companies are also including living walls on roof terraces and in interiors to create pleasant and healthy environments for staff.

Domestic living walls are the perfect feature for any garden and visually create a wonderful green outlook for even the most limited space. Planted correctly living walls can flourish in courtyards, small terraces, light wells and staircases with restricted light. Edible plants including herbs, strawberries and salads can be grown in the Living Wall system enabling the city dweller to incorporate their own edible garden.



Interior living walls make a striking space saving aesthetic. Ideal for incorporation in any office space to provide cleaner air for staff (plants remove particulate matter, formaldehyde and benzene and also oxygenate the air) and aid good sound abatement. These benefits lead to healthier buildings in which to work and live which in turn helps larger businesses to reduce stress in staff and improve staff retention.

INTRODUCING LIVING WALLS, GREEN WALLS AND SUSTAINABLE LANDSCAPING

IN THE BUILT ENVIRONMENT, PROMOTING BIODIVERSITY,

HEALTH AND WELLBEING.

Living green walls are panels of plants, grown vertically on structures that can be either free-standing or attached to the exterior or interior of a building wall.

Living green walls are also referred to as vertical gardens, green walls or living walls.

In planning for a living wall we would target plants which provide particular benefits such as best pollinators to attract wildlife such as bees, butterflies and birds to the urban environment. Additionally, using different varieties of plants which can vary in color, growth and flower, will create living art, rather than a lawn on the side of a building.

Most living walls are designed with a drip-irrigation system, which maximises the use of water and is set up using an automated system that times the irrigation to minimise water waste. Living walls also filter the air around them by absorbing and cleaning pollutants. This natural effect is multiplied by the sheer number of plants in living walls. A well-designed, flourishing green wall can drastically improve a building's appearance, adding colour and texture that won't go out of fashion.

Living Walls are one of the best way to reduce air pollution in cities

Research highlights the superior ability of living walls benefit improving air quality. The nature of city landscapes creates 'street canyons' which trap pollution at street level, living walls can increase the deposition rate by as much as 40% of nitrogen



dioxide and 60% for particulate matter as the cleaner air from above the street canyons is introduced.

Best plants are selected to trap particulate matter (PM) to improve the health and well-being of city residents.

'Green facades reduce local air pollution and particulate matter by up to 20%' – Arup Green Buildings'.

Living walls also provide great insulation - keeping buildings cool in the summer and warmer in the winter – creating proven energy efficiencies. Research and development program includes research into the thermal benefits of living walls, undertaken at the University of Sheffield, long study exposed irrefutable evidence of the effectiveness of living walls to cool buildings in the summer and insulate buildings in the winter.

LIVING WALLS ARE ONE OF THE BEST WAY TO REDUCE AIR POLLUTION IN CITIES





V-SHAPE To make Royal Grass look as natural as possible, Royal Grass continuously study natural grass. Since 2005, Royal Grass are the first and only artificial grass manufacturer to produce the 'V-shape', inspired by nature. This is a lengthwise fold in each blade, just like real turf.

MiNT TECHNOLOGY Our latest development is Micro Nerve Technology (MiNT). We integrated the micro veins running lengthways on grass fibers. To strongly reduce glare and make our artificial grass look as natural as possible! The 'backbone' and ideal angle of the V-shape result in grass blades that stay upright for longer. This provides a far superior product in comparison to traditional fake grass. *These developments are patented, so no other artificial grass company can offer the same natural look with V-shape fiber and MiNT technology!*

Since its foundation in 2003, Royal Grass has become the market leader in innovative artificial turf. They are operating in more than 45 countries worldwide. Millions of people are enjoying the benefits of Royal grass in their gardens, local parks or playgrounds. Green Desert Landscaping is striving to supply only best quality products and of course we chose Royal Grass. Royal grass stands for high quality artificial grass with a nature appearance, but having the best grass fibers is just one thing. A good bedding and professional installation are both equally as important when it comes to the durability of your artificial lawn. The high quality of Royal Grass is based on the developments in fiber technology that were first used in the third generation of artificial grass playing fields:

- High-quality, specially selected raw materials that had already proven themselves in practical applications.
- UV stability and color-fastness so that the turf did not discolor.
- Safety: no heavy metals, such as lead and zinc, or other substances in the raw materials, which could put users at risk.

Softness: fibers on which even professional footballers could safely make sliding tackles. Royal Grass is developed and produced in the Netherlands. All V-Shaped fibers are produced at Ten Cate and the production of the artificial grass takes place in Genemuiden, the Netherlands. Royal Grass is proud to carry the 'Powered by Ten Cate' label.



The use of artificial grass within the commercial sector is rapidly becoming a must have. Whether you are wanting to green up your office environment or transform your shop window Royal Grass has the perfect product and service. Making something pleasing to the eye gives your audience a feeling of added value. How can you make your office or business building more beautiful, greener and add more atmosphere to it?

Artificial grass is being used more and more often to adorn—often boring—business premises. The products of Royal Grass are ideal as a green and water-wise maintenance-friendly solution in and around buildings of companies and institutions. You can create a delightfully fresh and green look around the office building with Royal Grass. Its application's seem to be endless, whether it be a

Restaurant, High Street Retailer, Outdoor Furniture Shop, Garden Centre or even a Drinks Dispenser, once we have grassed it the customers follow. Clients are quite happy to make the initial investment on the basis that they see increased revenue as a result of increased footfall. When your commercial space will see high footfall, safety has to be a priority. They also see an increase in productivity when used in an office/work environment where employees and visiting customers feel more comfortable with their surroundings. It truly brings in a happy vibe. And a feeling of well-being.

Some of the commercial applications are as follows:

- Giant Grass Branded Letters
- Office Buildings Outside space
- Sporting Events
- Office Internal Chill out Zones (With putting)
- Charity Events
- Outside signage
- Pop Concerts/Festivals
- Bars and Smoking Areas
- Department Stores
- High Class Dining spaces in Restaurants
- Furniture covered in Grass
- Themed shows and events

Working with architects and interior designers we are seeing and applying our products in ways we never imagined a few years ago. I think it would be safe to say that there is virtually nothing that we cannot grass or transform for you. Choosing the products is one element of this process but Green Desert Landscaping as a company that is all about the complete deliverable and that covers installation. We have all our own installers who are trained to the highest level in customer service and product installation so feel rest assured you are in safe hands.





LANDSCAPING FOR THE FUTURE

Landscaping is evolving to deal with issues of water security, which are fast becoming a worldwide concern, particularly in water-short countries like Namibia.

Gardeners all over the world are aware of the need to save water. By conserving water wherever possible, we can delay the building of new dams, tunnels and pipelines. This will save money and protect the environment. It is a responsible choice, and our gardens are a good place to begin. The Water-wise Garden demonstrates how to create a garden that is lush and colorful throughout the year, but which requires less water than the average garden. Important water-wise principles are to be followed, such as soil preparation, mulching, making windbreaks, creating shade, lawn care and grouping of plants according to their water needs.

As water is precious here in Namibia (especially in our continuing drought), we strive to help clients create less-thirsty landscapes that emphasize beauty, functionality, and sustainability. With these goals in mind we carefully select appropriate plant species and hardscape materials that work in harmony with your existing home and climate zone.



WHAT IS AN ARID GARDEN?

An arid garden uses drought tolerant plants or desert plants when landscaping in an environment that receives very little rainfall, intense sunlight, and experiences fluctuating temperatures. Indigenous Namibian water wise plants lend themselves well to arid garden design.

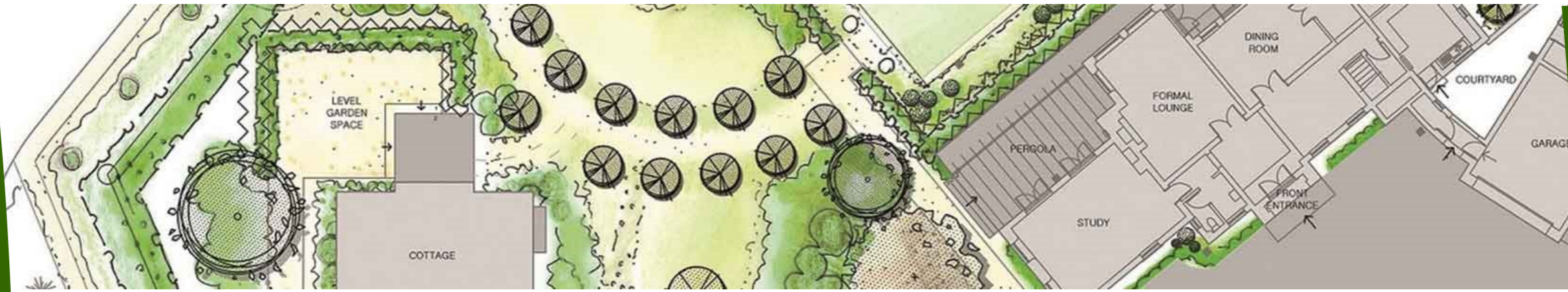
This style of garden landscape is often aimed at being more maintenance free than most other landscaping styles of gardens. It is most often done as an informal style of landscaping where one tries to imitate nature and natural conditions, using plants that are, often but not always, either indigenous or endemic to a specific area. These plants are left, for the most part, to grow and look like they would in nature therefore giving the garden landscape that wild natural feel.

Water wise gardens are definitely becoming the way of the future in this country, given the scarcity of water and also the simplicity and reduced maintenance factors. The clever use of hard landscaping materials such as gravel, bark chips, paving to reduce the size lawn areas which are the main culprit when it comes to water and maintenance needs.

A water-wise landscape is one that is functional, attractive, and easily maintained in its natural surroundings. A water-wise landscape also helps to conserve water. You have undoubtedly heard that Namibia is one of the driest countries south of Sahara. This fact, along with our relatively high level of water consumption and our population growth, has brought water conservation to the forefront of those natural resource issues currently facing the state. In Namibia approximately 65% of our annual culinary water consumption is applied to landscapes. A great deal of water conservation may be achieved by keeping a few water-wise landscaping principles in mind as we design, install, and manage our landscapes.

A landscape design should meet the needs of the people who will use and maintain the area while incorporating the site's existing environmental conditions into the design. Water is a limiting resource in Namibia, so designing the landscape to efficiently use water is important. Conserving water in the landscape can be accomplished by selecting low water use plants, designing and scheduling irrigation systems efficiently, grouping plants according to their water requirements, and using hardscaping materials (patios, stone paths, decks, etc.) appropriately to reduce the area requiring irrigation.





BRINGING EXCELLENCE IN LANDSCAPE DESIGN AND INSTALLATION TO NAMIBIA!

Each person has their own idea of what makes a great garden, this is why we take our clients' input so seriously. It is our job to implement gardens that suit the requirements, likes and lifestyle of our clients. The landscaping design process is the first stage of your landscaping and begins with the vision of your ideal landscape. This is a perfect balance of your wants, needs and budget. Green Desert Landscaping designers work closely with you to create a design for your space that enhances your lifestyle and adds value to your home.

We will

- create your landscape design unique to your style, purpose, involvement and feel
- help you select the most suitable soft and hard landscape elements
- offer design solutions to challenging areas
- ensure that your landscape is designed in a way that can grow and change with the

Once we've created a landscape design that you love, we start on the build phase with your project coordinator.

Bringing Excellence in Landscape Design and Installation to Namibia!

If you want your outdoor living experience to go well beyond the ordinary without even leaving your yard, we're the landscape firm that can take you there. At Green Desert Landscaping our goal is to help your dreams become a reality. We believe that your yard should be a reflection of you. We specialize in designing and installing custom Landscape projects of all sizes. Our goal is for everything to be done in excellence.

It means our designs planned carefully, and our Installation are executed with quality.

Our landscape designs combine natural beauty with function and sustainability. We'll work with you to create the outdoor space you want, providing visual harmony that will enhance the value of your home or business.

We believe that a well-designed landscape is an artistic expression of both client and designer, which morphs the divisions between a building and it's environment.





text



Green Desert Landscaping

**tuling your garden in perfection!
Call us - to simply get inspired!**



RESIDENTIAL & COMMERCIAL SERVICES

- Landscape design
- Landscape lighting
- Hardscape installation / Patios
- Natural stone walls / retaining walls / Decking
- Outdoor fire pits
- Water features / garden ponds
- Artificial Grass – “Royal Grass”
- Roll on lawn
- Driveway installation & renovation
- Walkway installation & renovation
- Palm tree / tree trimming and removal
- Irrigation design & installation & service
- Weekly lawn / garden maintenance
- Organic lawn treatments / Fertilizing / Seeding
- Pesticide applications
- Disposal service
- Living walls / Vertical gardens
- Water-wise landscaping

Green Desert Landscaping

Box 5537 / Walvis Bay
081 / 884 17 37 or 081 / 638 60 86
greendesertlandscaping@outlook.com
for Windhoek: greendesertwdh@outlook.com
www.green-desert-landscaping.com
www.facebook.com/GreenDesertLandscapingNamibia