

TM-FLOW EXAM



Simultaneous measurement

7 min

Fast Test



No Human Error



Accurate results



Clear report

**FOR A TM-FLOW EXAM,
PLEASE CONTACT US
FOR AN APPOINTMENT**



LD TECHNOLOGY

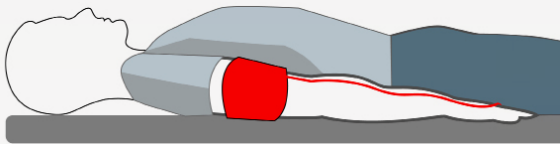


MAKING A DIFFERENCE

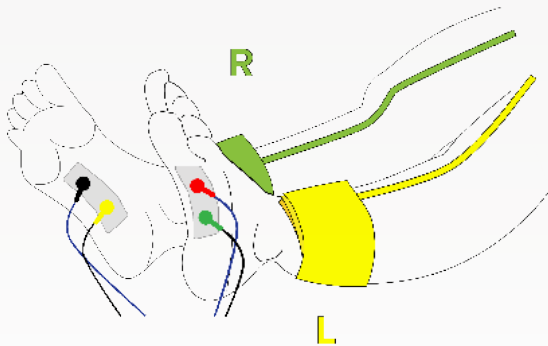
WHAT IS TM-FLOW ?

TM-Flow is a medical device that performs a non-invasive exam of your nerves and arteries.

The patient is lying down and relaxed.

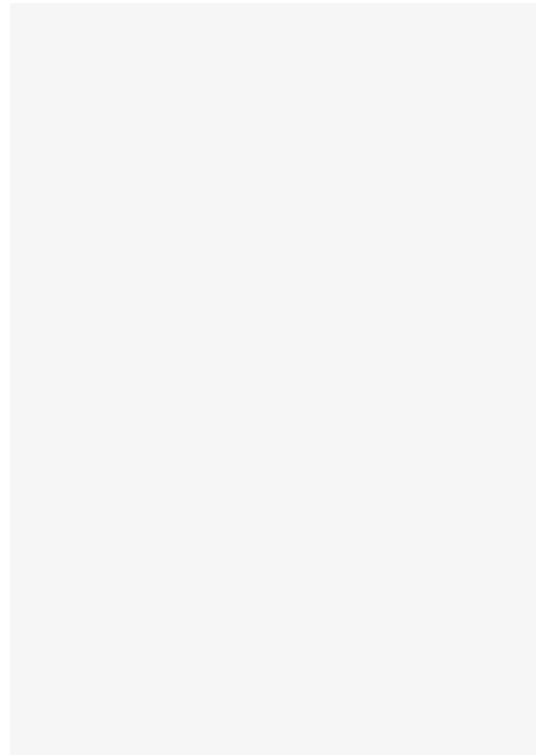


Pressure cuffs, oximeter sensor and disposable electrodes are attached to the skin of the patient.



**NON-INVASIVE
AND FAST EXAM**

MD OFFICE CONTACT



GET TESTED TODAY !

NERVE AND ARTERY SYMPTOMS

WHY TM-FLOW ?

ARE YOU AT RISK ?

ARE YOU EXPERIENCING ANY OF THE FOLLOWING SYMPTOMS ?

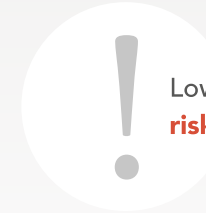
- ✓ Fatigue
- ✓ Headache
- ✓ Dizziness
- ✓ Exercise Intolerance
- ✓ Fainting
- ✓ Tingling in the Toes or Fingers
- ✓ Claudication
- ✓ Painful muscle cramping in the hips, thighs or calves when walking, climbing stairs or exercising

Artery and autonomic nerve dysfunction or damage are the most frequent complications of smoking or overweight or aging or chronic diseases such as diabetes, hypertension, hepatitis, thyroid dysfunction.

Although the symptoms may imitate each other, it is imperative to distinguish between autonomic neuropathy and disease because the treatments are quite different.

TM-FLOW allows to distinguish between autonomic neuropathy or artery disease.

Therefore, TM-FLOW offers the physician more treatment option.



Lower Artery and ANS damage **risk group in the USA**

50+

Population over 50 years old with cardiovascular factors:



HYPERTENSIVE



SMOKING



OVERWEIGHT



DIABETIC

70+

Everyone older than 70



ASK FOR AN APPOINTMENT TODAY



HELP YOUR DOCTOR TO DISTINGUISH THE CAUSE OF YOUR SYMPTOMS

OVER THAN 45 MILLION

Everyone in the risk group should be examined with TM-Flow