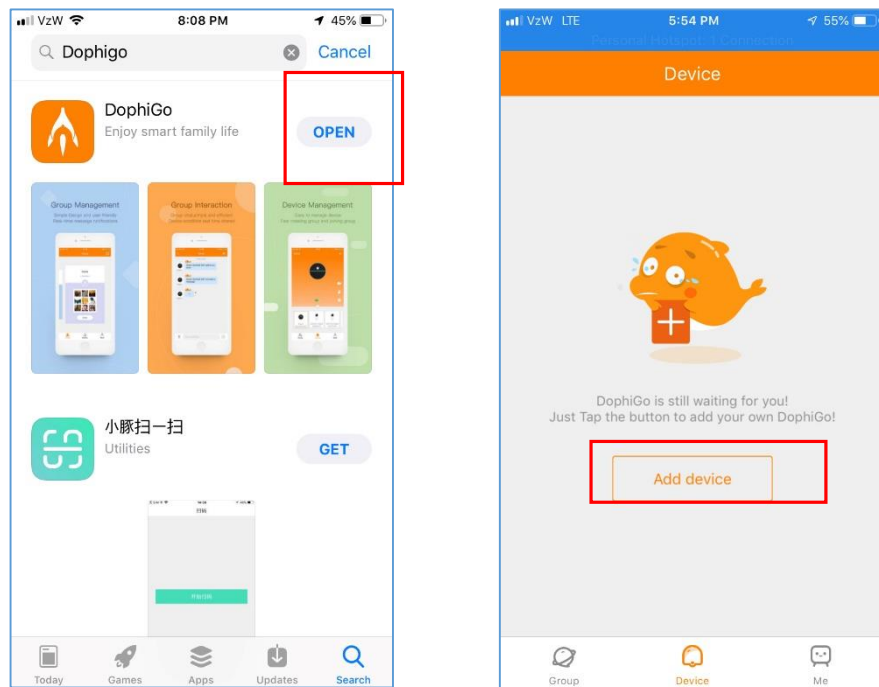


# DB2618 Quick Setup Guide

## 1. Download App

Download “Dophigo” from App store for iPhone or Play store for Android phone.

- Make sure your smartphone is connected to 2.4GHz Wi-Fi router.
- Register to create an account and log in.
- Open the app and Tap “Add device” button to add camera.

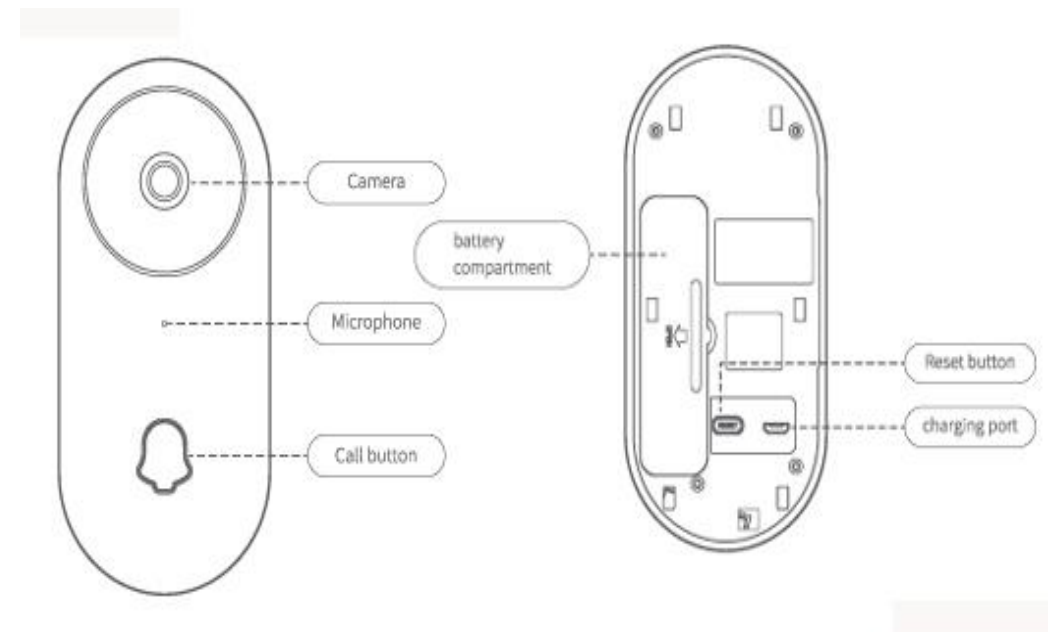


## 2. Turn on Wifi Setup mode

Before setup, make sure battery is fully charged (Solid Blue LED).

Press and hold call button for 5 seconds. Blue LED light blinks ready for WiFi set up.

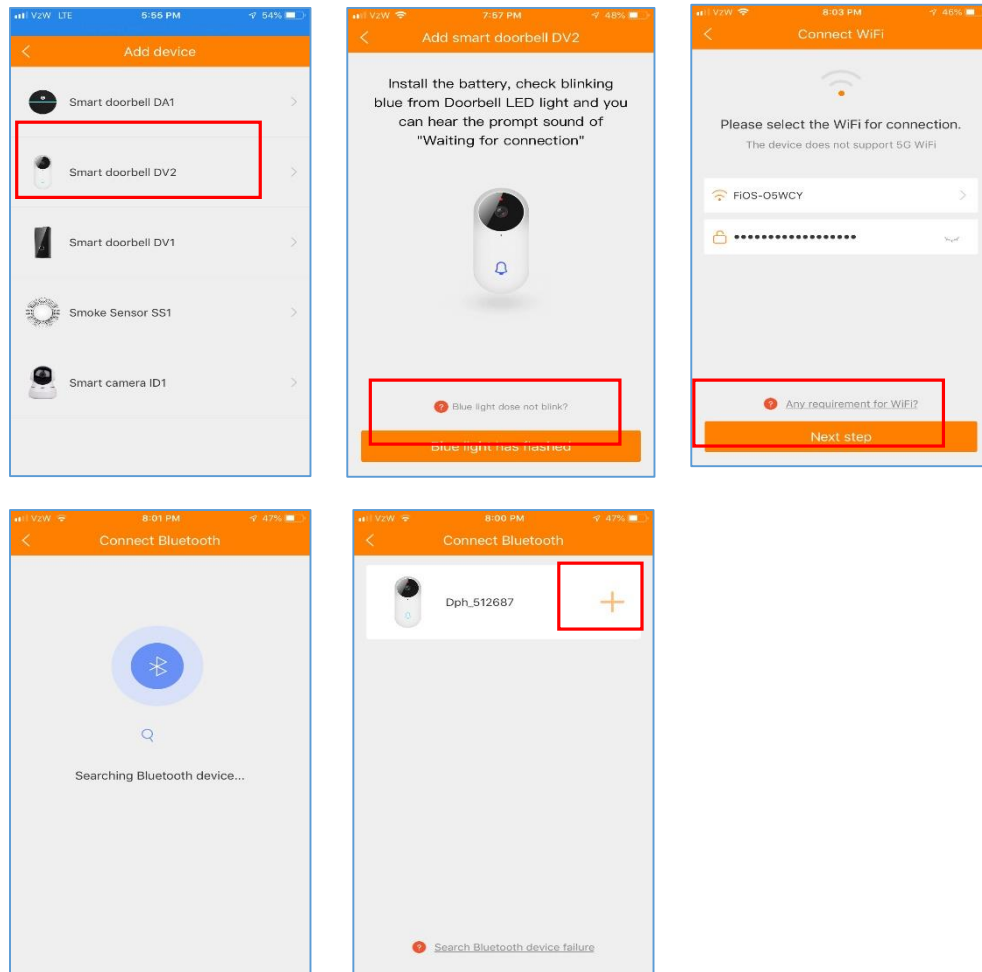
If not, press and hold the reset button on the back for about 3 seconds until the WiFi indicator blue light is blinking.



### 3. One Key WiFi Setup



#### While WiFi LED is blinking.

- Make sure your phone is connected to your WiFi network & Start the App
- Tap on Smart Doorbell DV2
- Your WiFi SSID and password is automatically loaded.
- Tap “Blue light has flashed” button.
- Tap “+” button.



### 4. Live View & Playback

#### Tap on the camera from the list.

- Tap “Got it” button to confirm.
- Create group name.
- Tap on Playback button  to see recorded video and message.
- Tap on setting  button to change alarm and time.

