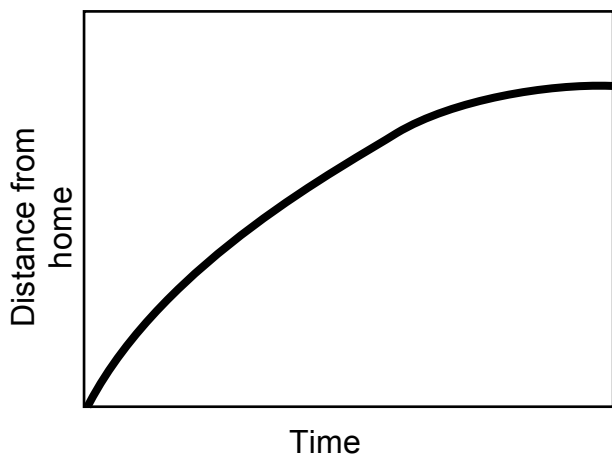
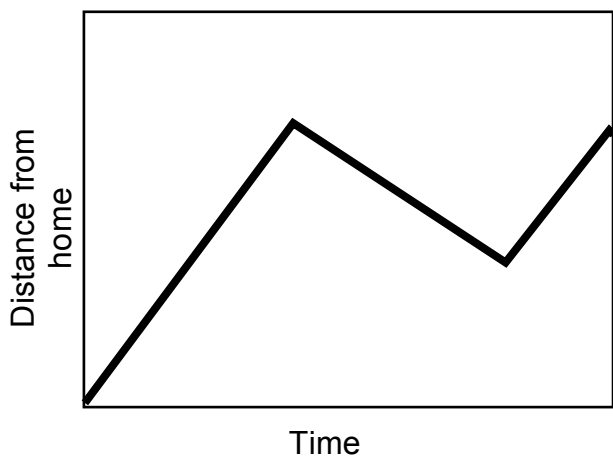


## Card Set A: Distance–Time Graphs

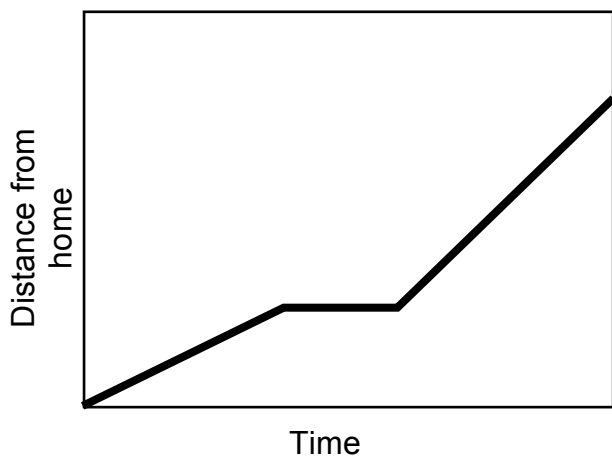
A



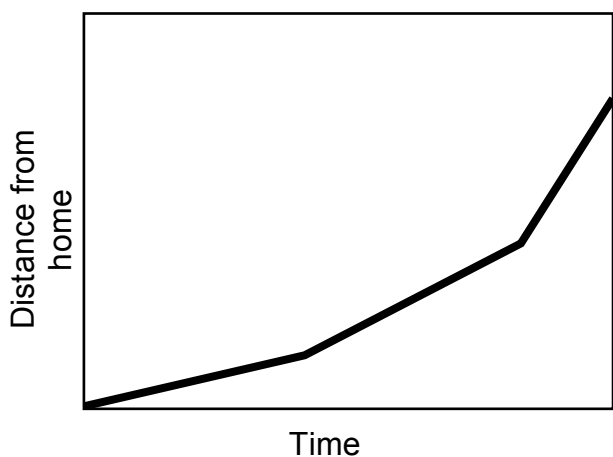
B



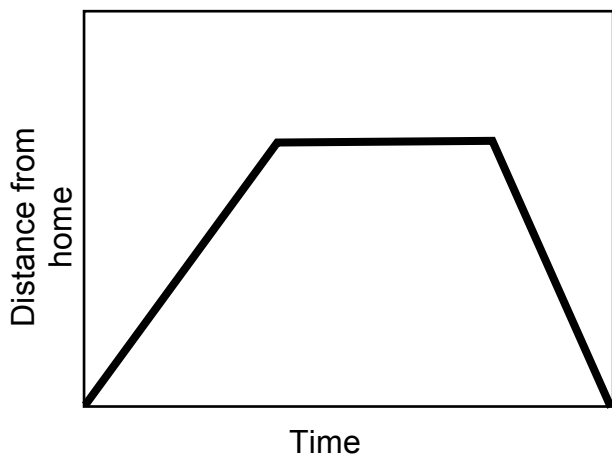
C



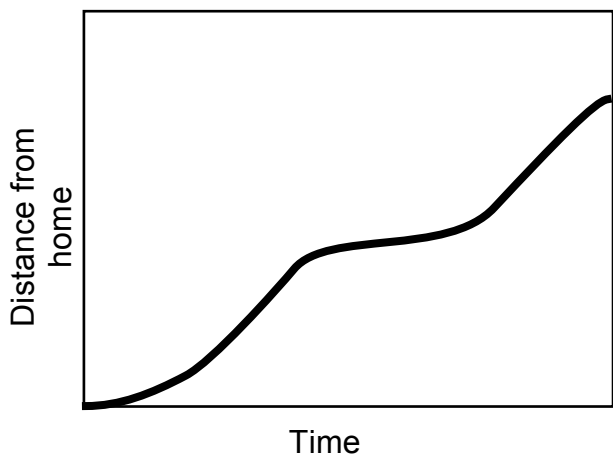
D



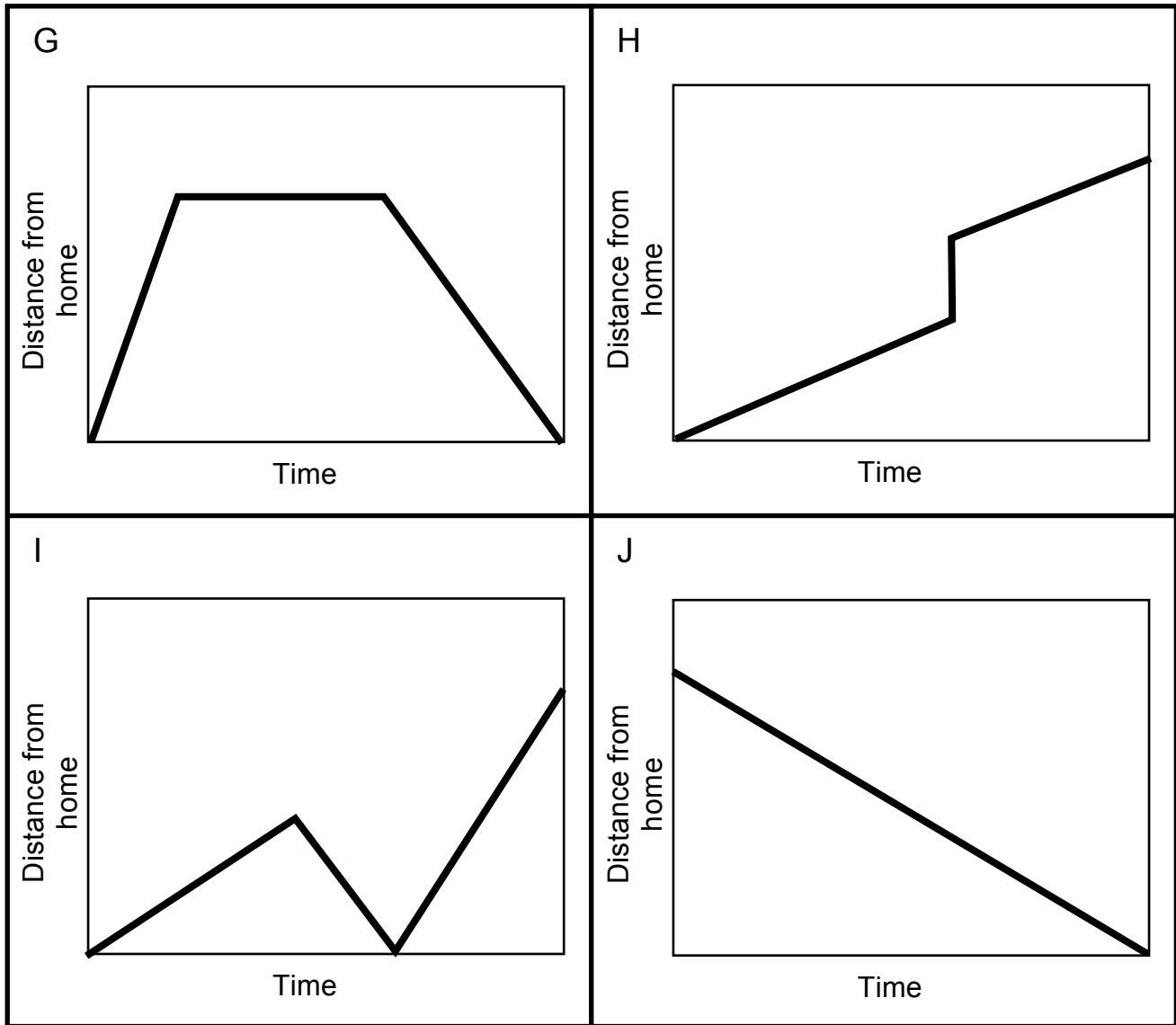
E



F



## Card Set A: Distance–Time Graphs (continued)



## Card Set B: Interpretations

<b>1</b> Tom ran from his home to the bus stop and waited. He realized that he had missed the bus so he walked home.	<b>2</b> Opposite Tom's home is a hill. Tom climbed slowly up the hill, walked across the top, and then ran quickly down the other side.
<b>3</b> Tom skateboarded from his house, gradually building up speed. He slowed down to avoid some rough ground, but then speeded up again.	<b>4</b> Tom walked slowly along the road, stopped to look at his watch, realized he was late, and then started running.
<b>5</b> Tom left his home for a run, but he was unfit and gradually came to a stop!	<b>6</b> Tom walked to the store at the end of his street, bought a newspaper, and then ran all the way back.
<b>7</b> Tom went out for a walk with some friends. He suddenly realized he had left his wallet behind. He ran home to get it and then had to run to catch up with the others.	<b>8</b> This graph is just plain wrong. How can Tom be in two places at once?
<b>9</b> After the party, Tom walked slowly all the way home.	<b>10</b> Make up your own story!