

# Country Lanes

WOODWORKING, LLC

Vintage Furniture in Pine & Rough Sawn Maple



2018





- Furniture for every room in the home
- We stock unfinished for short lead times & a quick turn around for you!
- 16 stock colors - Plus Distress - Antique options to choose from
- Give us a try. Something you can sell every day.

**QUALITY | SERVICE | HONESTY**

95 ... Cafe Hutch  
 60" w x 82" h 20.75" d  
 Black w/Michael's Cherry Top



160 ... Margie's Die Safe  
 49" w x 70" h 20.5" d  
 Buttermilk w/Asbury 7992 trim





96B ... Little Lizzie w/Baskets  
 36" w x 80" h x 20.75" d  
 Std Maple Top  
 Black (Sand-Thru) w/Michaels Cherry Top  
 96 ... Little Lizzie w/No Baskets



97 ... Little Mandie w/Hutch  
 32.125" w x 80" h x 20.75" d  
 Std Maple Top  
 Red (Sand-Thru) w/Burnt Umber Top



155 ... Slant Back Hutch  
 23.5" w x 72" h 12.25" d  
 Pear



223 ... Brunswick Table  
 44" w x 44" h x 30" d  
 All Maple Std  
 Finish - Black (Sand Thru) w/Michael's Cherry Top

593 ... Marbury Side Chair  
 Finish Black (Sand-Thru)  
 w/Micheal's Cherry Seat





Shown in Seafoam.

100 ... Lizzie's Hutch  
48" w x 82" h x 20.75" d  
Shown in Black w/Michael's Cherry  
stained top & baskets.



99 ... Sadie's Hutch  
60" w x 82" h x 20.75" d  
Shown in Buttermilk w/Burnt Umber  
stained top & baskets.



153 ... Fresno Wine Cabinet  
41" w x 72" h x 18" d  
1 Adj Shelf - Adj Wine Rack - Wine Glass Holder  
Finish - Sage w/Light Asbury



98 ... Mandie's Hutch  
50" w x 80" h x 20.75" d  
Shown in Black w/Micheal's Cherry top.





232 ... Georgetown Pantry  
 36.5" w x 71" h x 17.25" d  
 Shown in Buttermilk w/Rustic Willow  
 tins. Features 3 adjustable shelves.  
 232W ... Georgetown Pantry All Wood Doors



159 ... Linen Cabinet  
 25.06" w x 71" h x 17.25" d  
 Solid Sides  
 Finish - Buttermilk Distress w/Antique



233 ... Vintage Jelly Cupboard  
 36.5" w x 56.25" h x 16" d  
 Shown in Black and features  
 3 adjustable shelves.  
 233W ... Vintage Jelly Cupboard  
 All Wood Doors



234W ... Green River Pie Safe  
 36.5" w x 51" h x 16.375" d  
 Shown in Buttermilk.  
 Features 2 adjustable shelves.



237 // Pottery Pantry  
 43.5" w x 65.06" h x 16" d  
 Shown in Red.  
 Features 3 adjustable shelves





214 ... 49" Plasma TV Cabinet  
49" w x 30" h x 18" d  
Shown in Black w/Medium Cherry  
stain. Features 1 adjustable shelf.



2142 ... 60" Plasma TV Cabinet  
60" w x 30" h x 18" d  
Shown in Black and features  
3 adjustable shelves.



215 ... Lg. Storage Bin  
50" w x 59" h x 16" d  
Shown in Olde Navy.



216 ... Sm. Storage Bin  
26.25" w x 59" h x 16" d  
Shown in 2-Tone Sage  
over Red.



217 ... Med. Storage Bin  
36" w x 48" h x 18" d  
Shown in Buttermilk w/Burnt  
Umber back.





102 ... Biscuit Safe w/Hutch  
 38" w x 70" h x 12.75" d  
 Shown in Black w/Michael's  
 Cherry stained back.



104 ... Sideboard w/Hutch  
 48" w x 82" h x 12.75" d  
 Shown in Celery & Michael's Cherry stain.  
 New! Taller hutch featuring 3 shelves.



120 ... Cape Cod Curio  
 25.06" w x 71" h x 17.25" d  
 Shown in Country White  
 and features 2 adjustable shelves.



121 ... Cape Cod Sideboard  
 46" w x 71" h x 17.25" d  
 Shown in Country White and  
 features 2 adjustable shelves.



122 ... Cape Cod Kitchen Cupboard  
 46" w x 71" h x 17.25" d  
 Shown in Country White.



123 ... Cape Cod Bookcase  
 46" w x 55" h x 15.25" d  
 Shown in Country White.



113 ... 3x4 Bookcase  
36" w x 48" h x 12.75" d  
Shown in Black and features  
2 adjustable shelves.



114 ... 3x5 Bookcase  
36" w x 60" h x 12.75" d  
Shown in Buttermilk and  
features 3 adjustable shelves.



115 ... 3x6 Bookcase  
36" w x 72" h x 12.75" d  
Shown in Black and features  
4 adjustable shelves.



117 ... 24" Corner Cabinet  
23.375" w x 72" h x 11" d  
15" Wall  
Shown in Black..



118 ... 28" Corner Cabinet  
27.375" w x 72" h x 13" d  
18" Wall  
Shown in Buttermilk.



119 ... 35" Corner Cabinet  
34.75" w x 72" h x 13" d  
24" Wall  
Shown in Black.





108 ... Bookcase w/Hutch  
32" w x 66" h x 12.75" d  
Shown in Buttermilk.



133 ... 2' Settle Bench  
24" w x 69.5" h x 16.5" d  
Shown in Harvest.



134 ... 3' Settle Bench  
36" w x 69.5" h x 16.5" d  
Shown in Black.



135 ... Ig. Chimney Safe w/Drawer  
14.5" w x 72" h x 12.75" d  
Shown in Burnt Umber and  
features 4 adjustable shelves.



136 ... Ig. Chimney Safe  
14.5" w x 72" h x 12.75" d  
Shown in Buttermilk and  
features 4 adjustable shelves.



137 ... Sm. Chimney Safe  
14.5" w x 48" h x 12.75" d  
Shown in Black and  
features 3 adjustable shelves.



165 ... Grandma's Cubby  
46.5" w x 38.5" h x 14" d  
Shown in Monument Gray



138 ... Side By Side  
 40" w x 70.5" h x 13.25" d  
 Shown in Buttermilk w/tops and shelves  
 in Ferret Brown. Features 5 adjustable shelves.



152 ... Side By Side Desk  
 22" w x 46" h x 12.75" d  
 Shown in Creamy Buttermilk



106 ... 1 Door Hutch  
 18" w x 70" h x 12.75" d  
 Shown in Buttermilk.  
 2 pcs.



201 ... Sm. Jelly Cupboard  
 22" w x 48" h x 12.75" d  
 Shown in Black and features  
 2 stationary shelves.



202 ... Lg. Jelly Cupboard  
 36" w x 48" h x 12.75" d  
 Shown in Cranberry Red and  
 features 2 stationary shelves.



203 ... Sm. Die Safe  
 21.06" w x 48" h x 12.75" d  
 Shown in Cranberry Red and  
 features 2 stationary shelves.







161 ... Burbank Hutch  
 36" w x 78.75" h x 20.75" d  
 Shown in Seafoam  
 Top & Back-Michael's Cherry



163 ... Wash Cabinet  
 36" w x 66" h x 19.5" d  
 Shown in Celery - Distressed Antique



164 ... Fullerton Buffet  
 36" w x 50" h x 14.5" d  
 Shown in Creamy Buttermilk/Rich  
 Tobacco



116 ... Hall Tree w/Mirror  
 46.5" w x 78" h x 18.75" d  
 Shown in Black



162 ... Norwalk Hall Tree w/Mirror  
 44.5" w x 78" h x 19" d  
 Shown in Pear/Rich Tobacco





210 ... Lg. Dry Sink  
37" w x 47.25" h x 12.75" d  
Shown in Buttermilk and features  
1 stationary shelf.



207 ... 3 Drawer Chest  
18" w x 36" h x 12" d  
Shown in Olde Navy.



208 ... 5 Drawer Chest  
18" w x 36" h x 12" d  
Shown in Sage Antique.



## Antique Distress ...

### 9 Step Antiquing Process

- 1) Distress Cabinet
- 2) Stain
- 3) Sealer
- 4) Hand sand entire cabinet
- 5) Paint
- 6) Rub through wear spots
- 7) Hand sand exterior
- 8) Glaze
- 9) Top coat

Antiquing will vary. Enjoy!

100 ... Lizzie's Hutch  
48" w x 82" h x 20.75" d  
Shown in Celery Antiqued  
w/Harvest stained top..

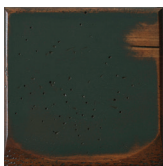
593 ... Marbury Side Chair  
Shown in Celery Distressed  
Antique w/Harvest stained seat.



\*Maple Base & Top

222 ... San Juan Table  
42" w x 42" w x 30" h  
(2) 12" Leaves  
42" w x 66" l x 30" h  
Shown in Celery Distressed  
Antique w/Harvest stained top

### Antique Distressed Colors Options



Green



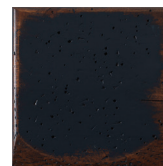
Mustard



Red



Brown



Navy



Chelsea Gray



Creamy Buttermilk



Seafoam



Celery



Sage



Black



Burnt Orange



Buttermilk



Broadwalk



Pear





221 ... DVD Cabinet  
22.5" w x 36" h x 18" d  
Shown in Black.



231 ... Bachelor's Chest  
34.75" w x 35.5" h x 15" d  
Shown unfinished.



213 ... Trash Bin  
21.75" w x 34.125" h x 12.75" d  
Shown in Spicy Mustard and features 1 waste basket..



211 ... Sm. Honey Cabinet  
20.56" w x 36" h x 10.5" d  
Shown in Chili Pepper and features 1 stationary shelf.



212 ... Lg. Honey Cabinet  
35" w x 36" h x 10.5" d  
Shown in Pepper Decan and features 1 stationary shelf.



213-2 ... Double Trash Bin  
40.375" w x 34.125" h x 12.75" d  
Shown in Navy and features 2 waste baskets.



219 ... Lg. Console Cabinet  
 41" w x 36" h x 10.75" d  
 Shown in Buttermilk and features  
 2 adjustable shelves.



220 ... Sm. Console Cabinet  
 23.82" w x 36" h x 10.75" d  
 Shown in Buttermilk and features  
 2 adjustable shelves.



235 ... Liberty Bench  
 50" w x 40" h x 16.375" d  
 Shown in Cranberry Red. Distressed  
 and antiqued w/optional rat hole.



300 ... Catch All Cabinet  
 11.75" w x 24" h x 7.75" d  
 Shown in Cranberry Red.



311 ... End Tables  
 16.5" w x 24" h x 15.25" d  
 Shown in Buttermilk, Red  
 and Black.



316 ... Drop Leaf End Tables  
 23.75" w x 24" h x 23.75" d  
 Shown in Buttermilk  
 and Micheal's Cherry.





225 ... Shaker Sideboard  
 45" w x 52" h x 14" d  
 Shown in Sage and features  
 1 adjustable shelf.



205 ... Die Pantry  
 36" w x 46.25" h x 12.75" d  
 Shown in Black and features  
 3 stationary shelves.



209 ... Sm. Dry Sink  
 22" w x 47.25" h x 12.75" d  
 Shown in Sage Antique and  
 features 1 stationary shelf.



Dawson Plate Shelves  
 315 ... 47" w x 8" h x 8" d  
 314 ... 35" w x 8" h x 8" d  
 313 ... 30" w x 8" h x 8" d  
 312 ... 23" w x 8" h x 8" d  
 Shown in Cranberry Red.



230R ... Storage Bench w/Raised Panel  
 35" w x 17" h x 11" d  
 Finish - Chelsea Gray w/Espresso Top



301 ... Farmhouse Bench 23.5" w x 17" h x 11.25" d  
 302 ... Farmhouse Bench 35.5" w x 17" h x 11.25" d  
 303 ... Farmhouse Bench 47.5" w x 17" h x 11.25" d  
 Shown in Sage.



317 ... Water Stand  
 19" w x 30.75" h x 12" d  
 Shown in Buttermilk and  
 features 1 adjustable shelf.

# The Shaker Collection



132Q... Shaker Queen Bed  
64.25" w x 48" h x 88" d  
Shown in Black.  
132K ... Shaker King Bed  
131F ... Shaker Full Bed  
130T ... Shaker Twin Bed



129 ... Shaker Blanket Chest  
39" w x 18" h x 18" d  
Shown in Black.



125 ... Shaker Mirror  
36.5" w x 42.375" h  
Shown in Black.



127 ... Shaker Nightstand  
26" w x 28" h x 17" d  
Shown in Black.



126 ... Shaker Chest  
38" w x 48.625" h x 19" d  
Shown in Black. 6 Drawers..



226 ... 32.25" Hall Shelf  
32.25" w x 18" h x 11.25" d  
Shown in Buttermilk.



228 ... 47.25" Hall Shelf  
47.25" w x 18" h x 11.25" d  
Shown in Black.



227 ... 32.25" Hall Bench  
32.25" w x 19.5" h x 16.5" d  
Shown in Buttermilk.



229 ... 47.25" Hall Bench  
47.25" w x 19.5" h x 16.5" d  
Shown in Black.





114 ... 3x5 Bookcase  
36" w x 60" h x 12.75" d  
Shown in Navy Distress Antique



114 ... 3x5 Bookcase  
36" w x 60" h x 12.75" d  
Shown in Seafoam Distress Antique



203T ... 8m. Die Safe  
21.06" w x 48" h x 12.75" d  
Shown in Burnt Orange w/Wheat Tin



242 ... Delta Kitchen Island  
49.5" w x 36" h x 24" d  
Shown in Ferret Brown w/Sealy top and features 1 adjustable shelf, 1 pull-out waste basket, and 1 pull-out cookbook/spice drawer



154 ... Nesting Tables  
22" w x 22" h x 14" d  
Shown in Black - Sage - Buttermilk w/Sealy Tops



150D ... 6' Carolina Bookcase  
 36" w x 72" h x 13.375" d  
 Shown in Burnt Orange - Distressed Antique



149 ... 5' Carolina Bookcase  
 36" w x 60" h x 13.375" d  
 Shown in Black - Distressed/Antique



148 ... 4' Carolina Bookcase  
 36" w x 48" h x 13 3/8" d  
 Shown in Seafoam - Distressed Antique



204W ... Lg. Pie Safe  
 35.5" w x 48" h x 12.75" d  
 Shown in Navy  
 Distress Antique



243 ... Jefferson Dining Chest  
 42" w x 48.75" h x 18" d  
 Shown in Sage w/Burnt  
 Umber tops and features 1 adjustable shelf



244 ... Helen's Buffet  
 36.5" w x 58" h x 16.5" d  
 Shown in Seafoam and  
 features 2 adjustable shelves





241 ... Ella's Kitchen Server  
 46" w x 36" h x 20" d  
 Shown in Buttermilk w/Nutmeg top and features 1 adjustable shelf.



241-TD ... Ella's Kitchen Server  
 46" w x 36" h x 20" d  
 Track Door  
 Shown in Chelsea Gray w/Rich Tobacco top



238 ... Savannah Desk  
 46" w x 47½" h x 24" d  
 Shown in Navy w/Sealy top and baskets.



239 ... Lateral File Cabinet  
 34" w x 30" h x 17.5" d  
 Shown in Ferret Brown w/Sealy Top.



240 ... Regular File Cabinet  
 20.25" w x 30" h x 24" d  
 Shown in Ferret Brown w/Sealy Top.

## The Bakersville Collection



Q&M186 ... Bakersville Dresser  
58" w x 38.5" h x 21" d  
Shown in Almond

Q&M185 ... Bakersville Queen Bed  
66.25" w x 58" h x 88" L  
Shown in Almond

Q&M188 ... Bakersville Chest  
39" w x 55" h x 21" d  
6 Drawers  
Shown in Almond

Q&M187 ... Bakersville Mirror  
36" w x 38" h  
Shown in Almond

Q&M189 ... Bakersville Nightstand  
25" w x 27" h x 17" d  
3 Drawers  
Shown in Almond

This Page



Vintage Furniture in Rough Sawn Maple





Q&M184 ... Manchester Hutch  
46.5" w x 72" h x 18" d  
3 Adjustable Shelves  
Finish - Almond



Q&M182 ... Hampton Bookcase  
42" w x 60" h x 14" d  
3 Adjustable Shelves  
(Not shown)

Q&M183 ... Hampton Bookcase  
42" w x 48" h x 14" d  
2 Adjustable Shelves  
(Not shown)



Q&M181 ... Hampton Bookcase  
42" w x 72" h x 14" d  
4 Adjustable Shelves  
Finish - Earthtone



Q&M179 ... Norfolk Hall Seat  
47.5" w x 78" h x 19.75" d  
Finish - River Rock

This Page



Q&M180 ... 30" Norfolk Hall Seat  
30" w x 78" h x 19.75" d  
Finish - Earthtone

# The River Jake Collection

Circular sawn maple for exterior  
 Bedroom case goods have dust board bottoms  
 Full extension drawers - made with high quality pine & 8-lock corners  
 Standard cast iron hardware - hinges, knobs, & rat-tail latches  
 Due to availability, we reserve the right to substitute hardware

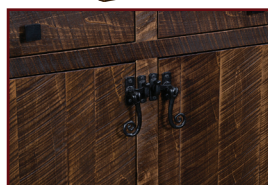


Q&M171 ... Andy's Honey Cabinet  
 36" w x 36" h x 11.75" d  
 Finish - English Coffee

This Page



Q&M177 ... 60" Stonewall Buffet  
 60" w x 36" h x 19" d  
 Finish - Almond



Q&M176 ... Stonewall Buffet  
 48" w x 36" h x 19" d  
 Finish - Earthtone



This Page



Q&M168 ... Tavern Table  
36" w x 36" h x 30" d  
4 Doors  
Finish - Almond

Q&M169 ... Tavern Bench  
56" w x 18" h x 12" d  
Finish - Almond



Q&M173 ... Moss Hill Kitchen Island  
36" w x 56" h x 36" d  
2 Doors - 2 Adj Shelves  
Finish - Almond

Q&M175 ... Bar Chair  
15.5" w x 33" h x 18.5" d  
Finish - Almond



Q&M174 ... Bistro Table  
36" w x 36" h x 36" d  
Finish - Almond



This Page



RCH170A ... Stillwater Pantry  
 25.5" w x 56.375" h x 16" d  
 1 Door  
 Finish - English Cottage



RCH170 ... Stillwater Pantry  
 35.5" w x 56.375" h x 16" d  
 2 Doors  
 Finish - Almond



RCH178 ... 52" TV Corner Cabinet  
 52" w x 32" h x 21" d  
 36" Wall Space  
 Finish - Vintage Antique



RCH172 ... Rockdale TV Cabinet  
 60" w x 30" h x 17" d  
 Finish - River Rock



# The Cody Collection

RCH140Q... Queen  
64.25" w x 57" h x 88" l  
Shown in 226 Coffee

RCH140K ... Cody King Bed  
RCH140F ... Cody Full Bed  
RCH140T ... Cody Twin Bed



RCH144 ... Mirror  
36" w x 37" h  
Shown in 226 Coffee



RCH143 ... 7 Drawer Dresser  
59.5" w x 37" h x 19" d  
Shown in 226 Coffee

RCH146 ... 3 Drawer Night Stand  
23" w x 29½" h x 17" d  
Shown in 226 Coffee



RCH145 ... 6 Drawer Chest  
37" w x 48¾" h x 19" d  
Shown in 226 Coffee

Vintage Furniture in Rustic Cherry



RCH97 ... Little Mandie Hutch  
32 $\frac{3}{8}$ " w x 80" h x 20 $\frac{3}{4}$ " d  
Solid Back in Hutch  
Finish - Michael's Cherry



RCH405 ... Alpine Wardrobe Cabinet  
49" w x 76" h x 24" d  
3 Adjustable Shelves - 1 Closet Rod  
Finish - S-14



RCH133 ... 2' Settle Bench  
24" w x 69.5" h x 16.5" d  
Finish - Michael's Cherry



RCH159 ... Linen Cabinet  
25.065" w x 71" h x 17 $\frac{1}{4}$ " d  
4 Adjustable Shelves -  $\frac{1}{4}$ " Smooth Back  
Finish - Golden Brown





RCH406 ... Stoney Creek Island  
60" w x 36" h x 35" d  
1 Adjustable Shelf - 2 Towel Bars - Track Door  
Finish - Michael's Cherry



RCH222 ... San Juan Table  
42" w x 42" h x 30" d  
2 Leaves  
Finish - Michael's Cherry



RCH403 ... San Juan Bench  
60" w x 17½" h x 13" d  
Finish - Michael's Cherry

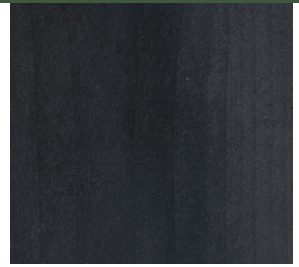


RCH100 ... Lizzie's Hutch  
48" w x 82" h x 20.75" d  
w/Baskets  
Finish - Michael's Cherry

# Furniture Construction

- Screws are used to assemble your furniture—not nails
- Backs are fastened with screws—not staples
- When backs are exposed, beaded tongue- in-groove solid pine boards are used
- Tack slides on feet
- Built with quality Eastern White Pine
- Standard Finish—Sealer, 2 coats of paint, sand through, then sprayed with stain & wiped off
- Inside & backs of cabinets are painted
- Optional distressing & antiquing

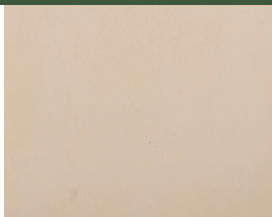
## Paint Colors



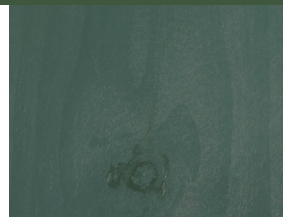
Black



Boardwalk



Buttermilk



Candleberry Green



Celery



Chelsea Gray



Chili Pepper



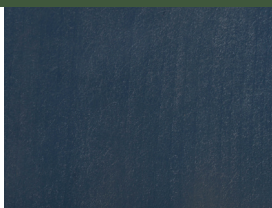
Country White



Creamy Buttermilk



Monument Gray



Olde Navy



Pear



Peppered Pecan



Red Cranberry



Sage



Seafoam



Spicy Mustard